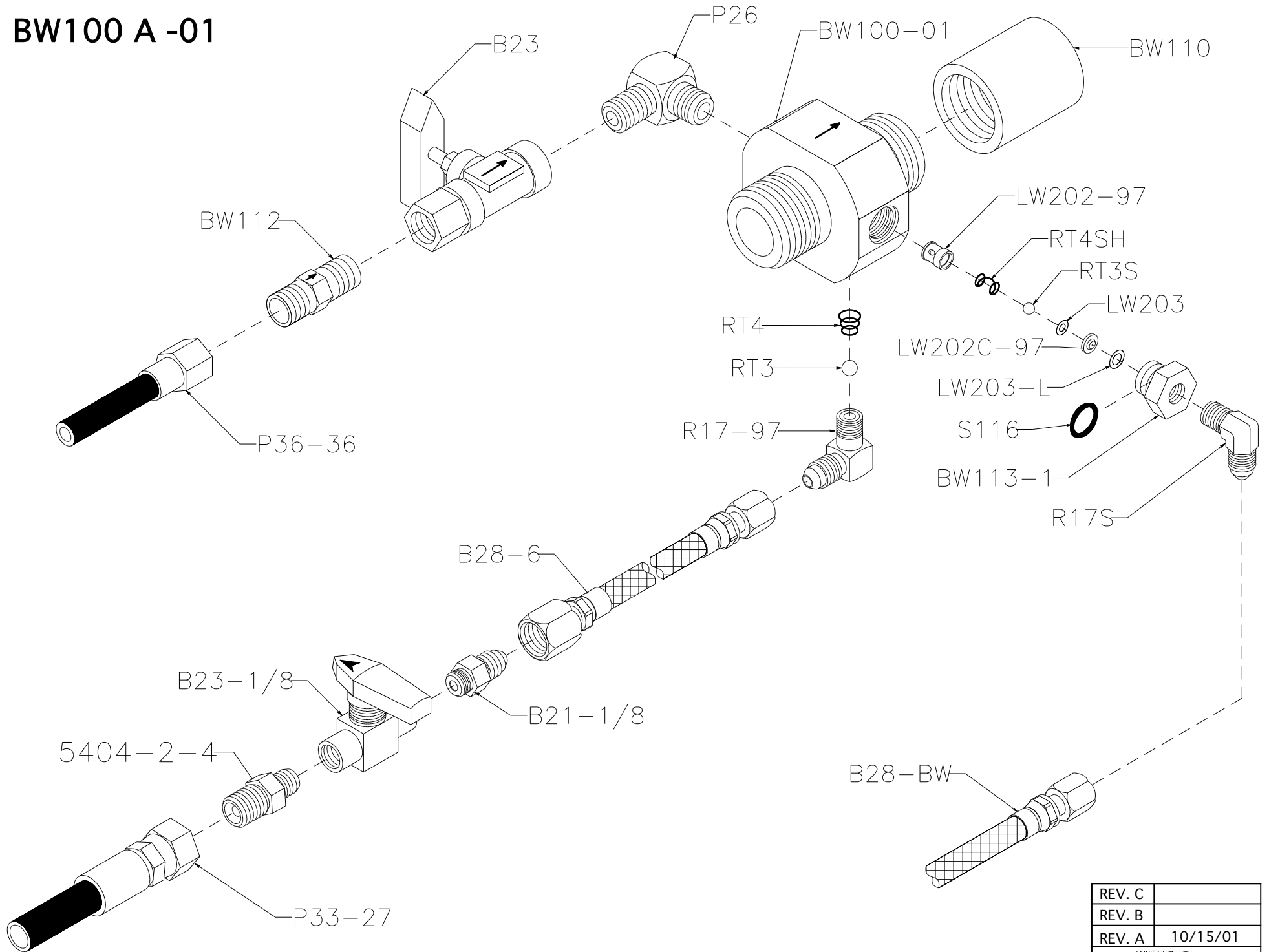
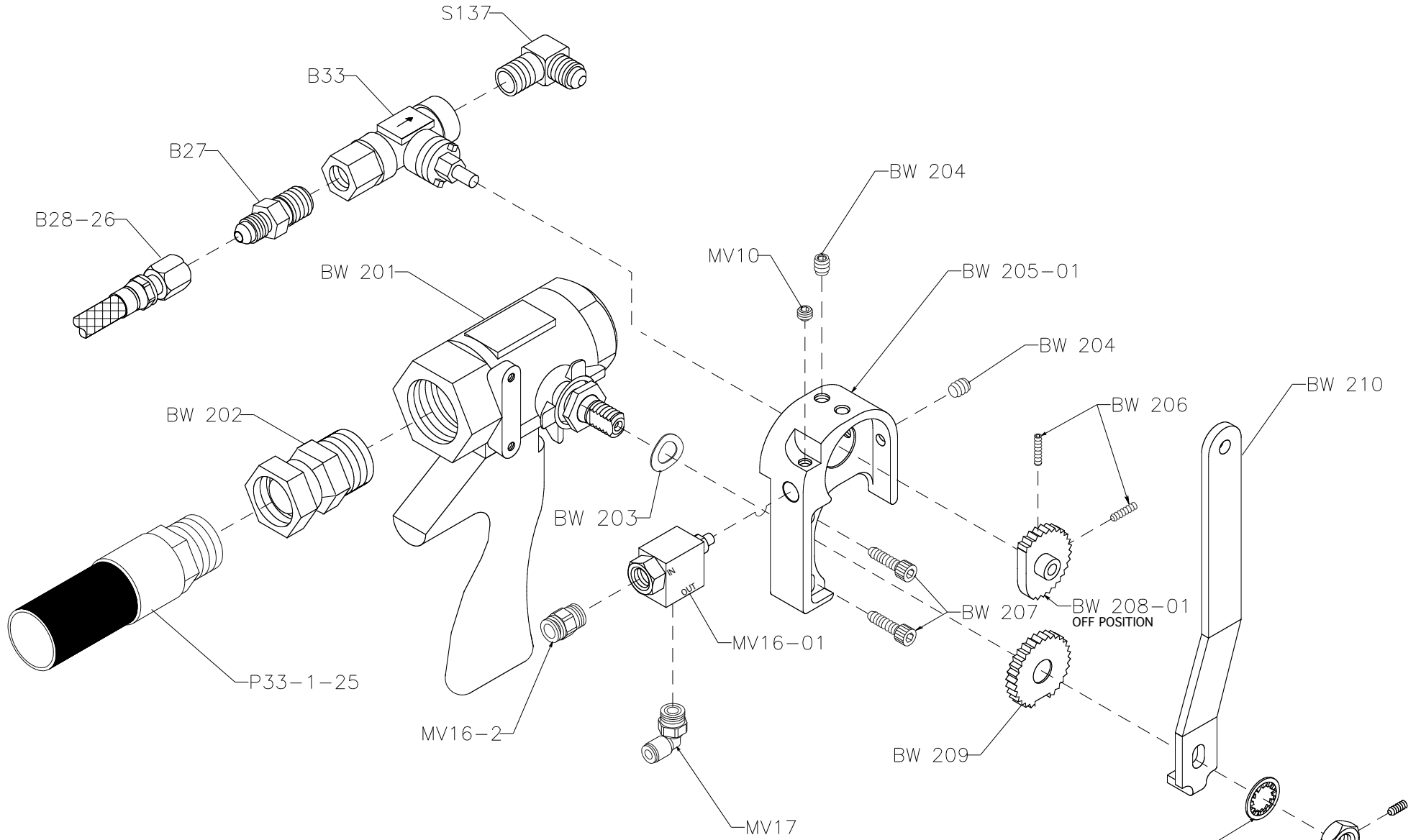


BW100 A -01



| | |
|--------|----------|
| REV. C | |
| REV. B | |
| REV. A | 10/15/01 |
| | |

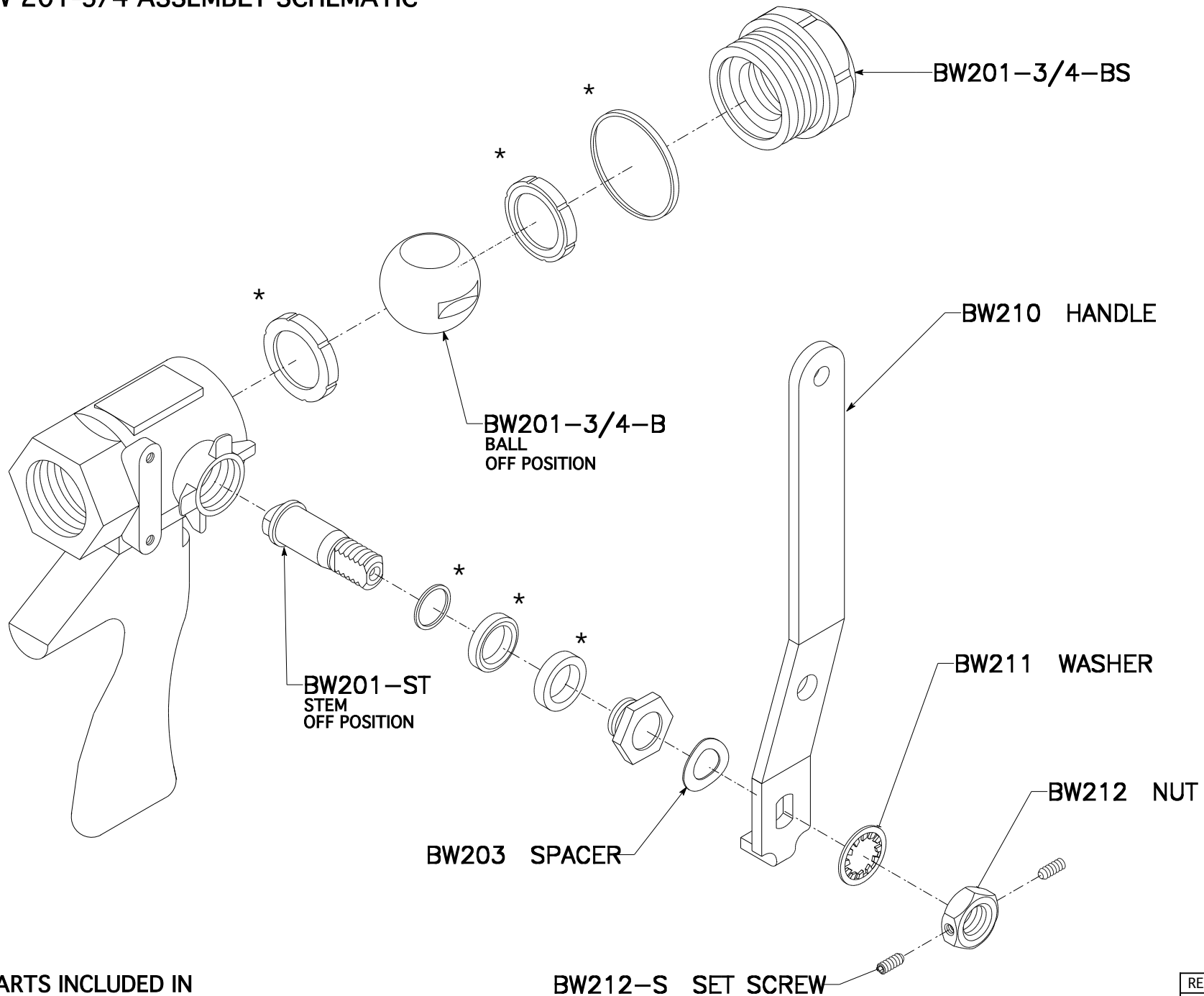
BW200 A-01



- BW211 WASHER
- BW212-S SET SCREW
- BW212 NUT

| | |
|--------------------|----------|
| REV. C | |
| REV. B | |
| REV. A | 1/14/03 |
| WOODGYS MFG | 10/15/01 |

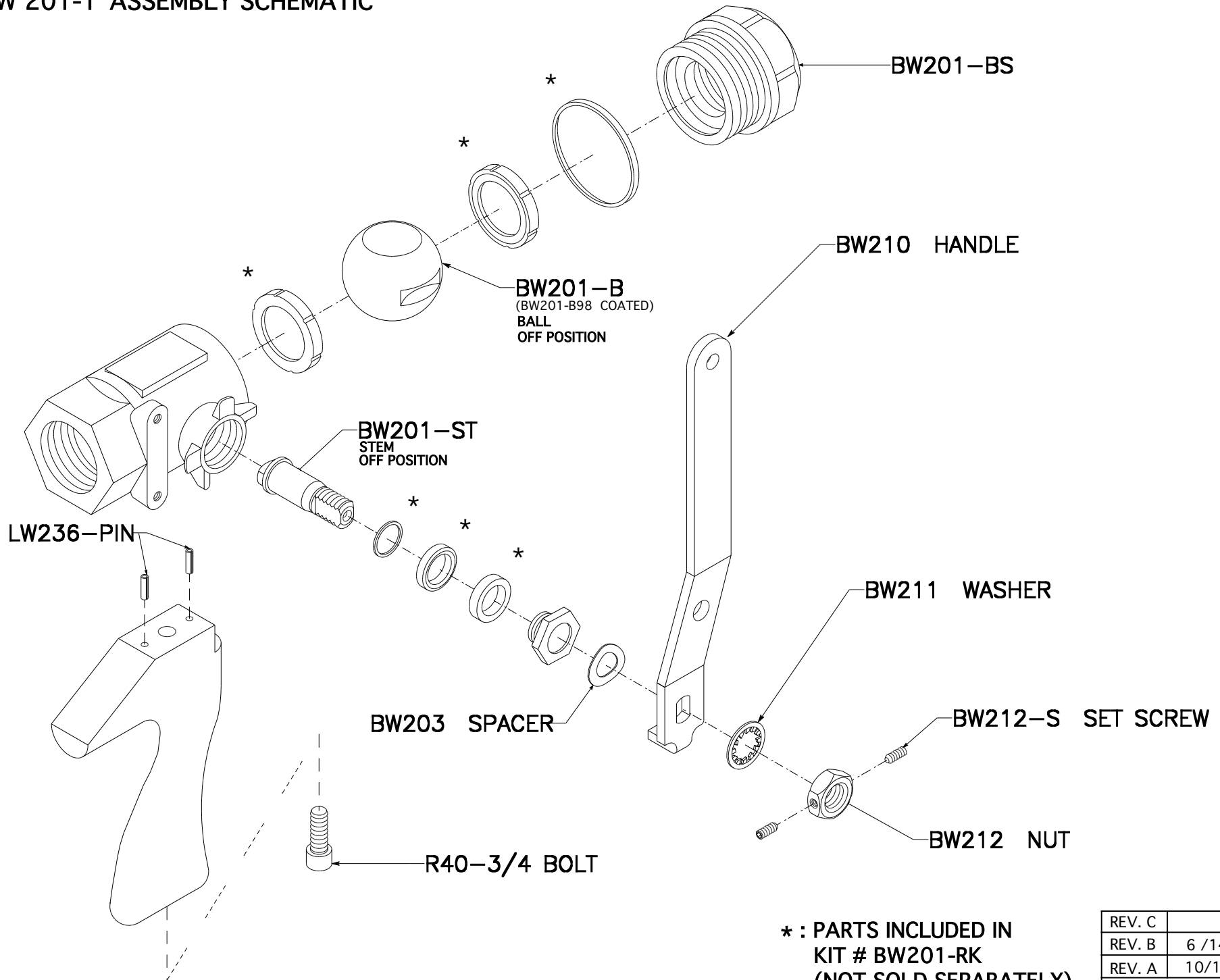
BW 201-3/4 ASSEMBLY SCHEMATIC



*: PARTS INCLUDED IN
 KIT # BW 201-3/4-RK
 (NOT SOLD SEPARATELY)

| | |
|--------|----------|
| REV. C | |
| REV. B | 6 /14/04 |
| REV. A | 10/15/01 |
| | |

BW 201-1" ASSEMBLY SCHEMATIC

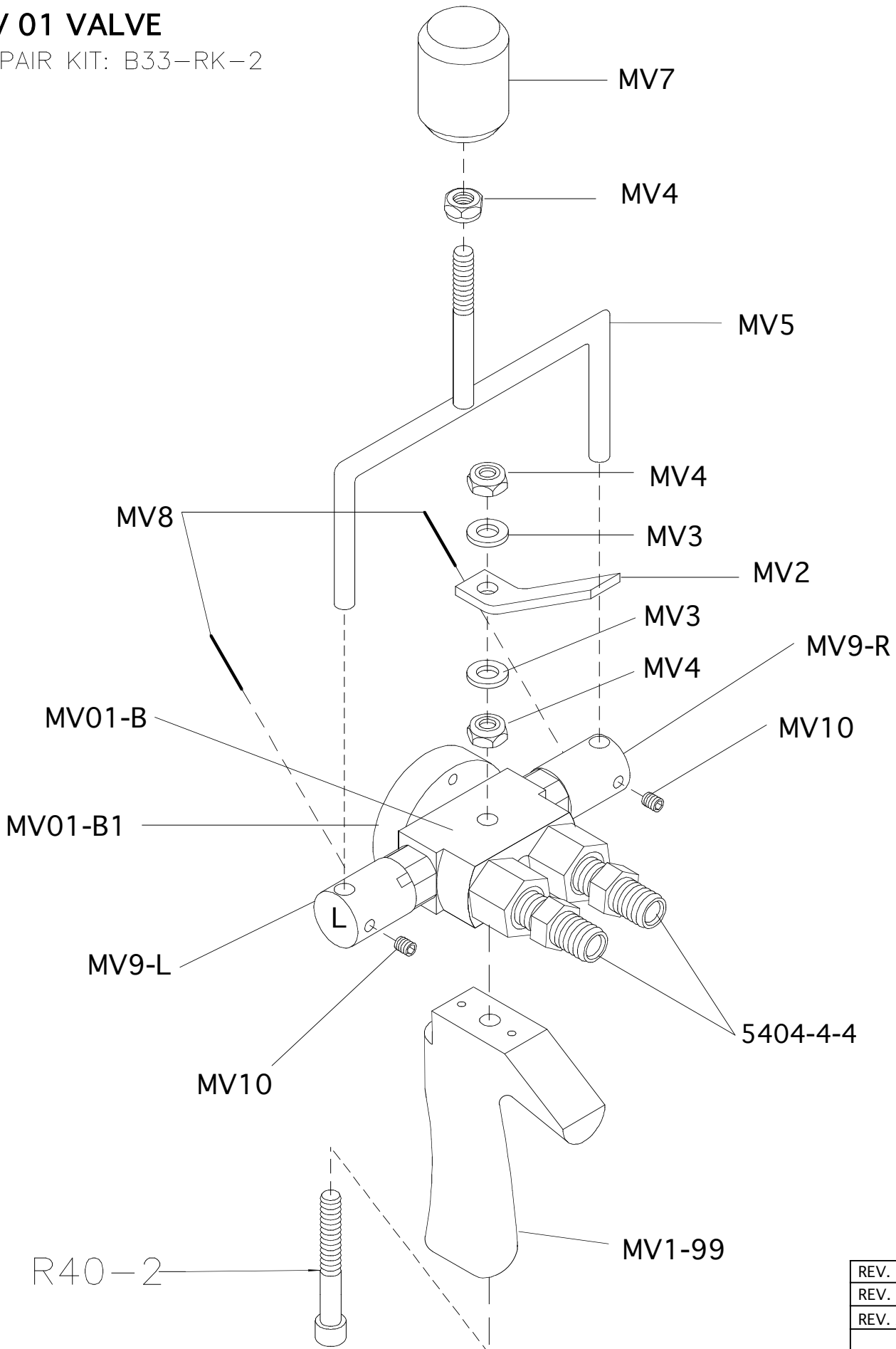


* : PARTS INCLUDED IN
 KIT # BW201-RK
 (NOT SOLD SEPARATELY)

| | |
|--------|----------|
| REV. C | |
| REV. B | 6 /14/04 |
| REV. A | 10/15/01 |
| | |

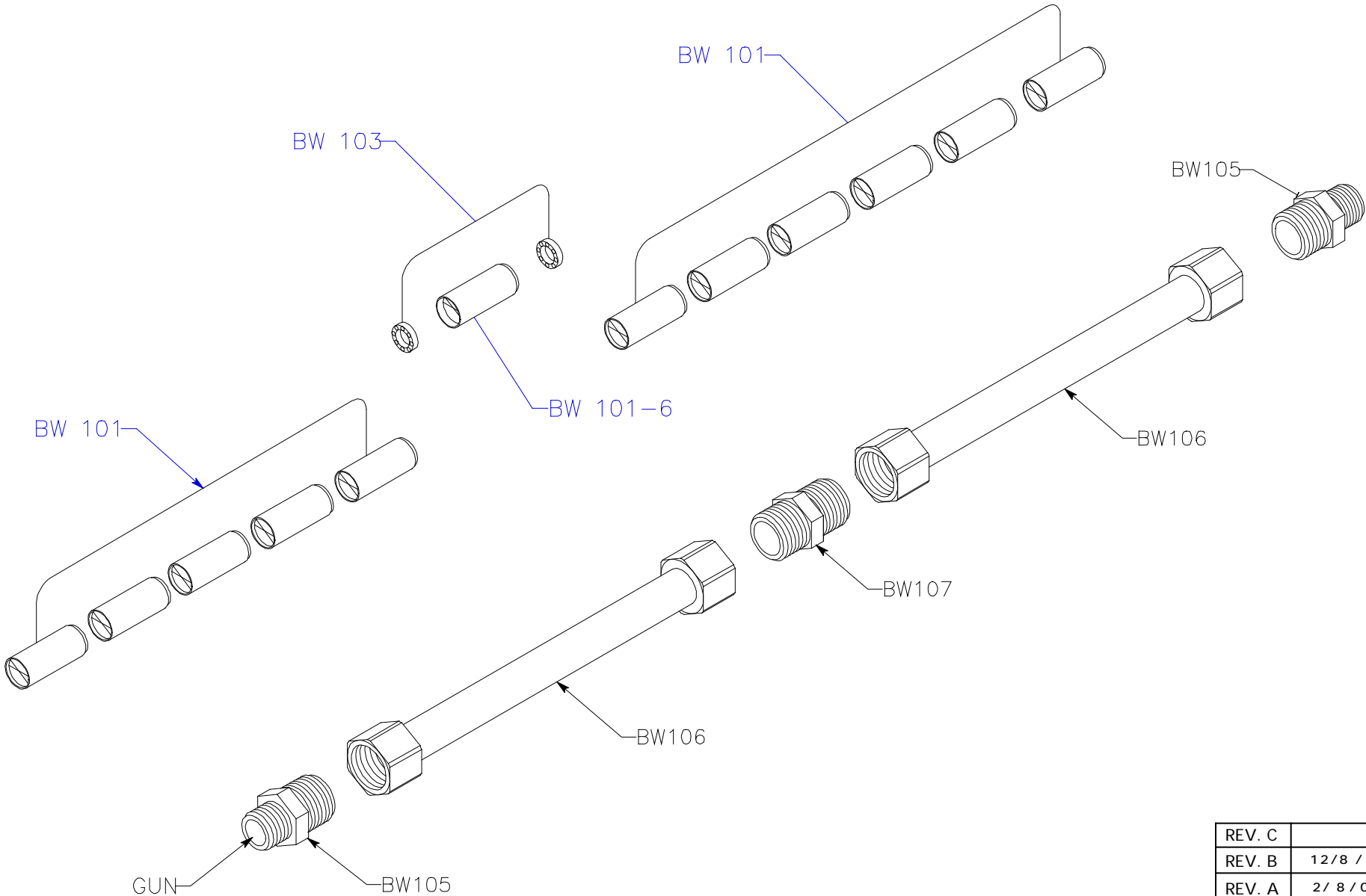
MV 01 VALVE


REPAIR KIT: B33-RK-2



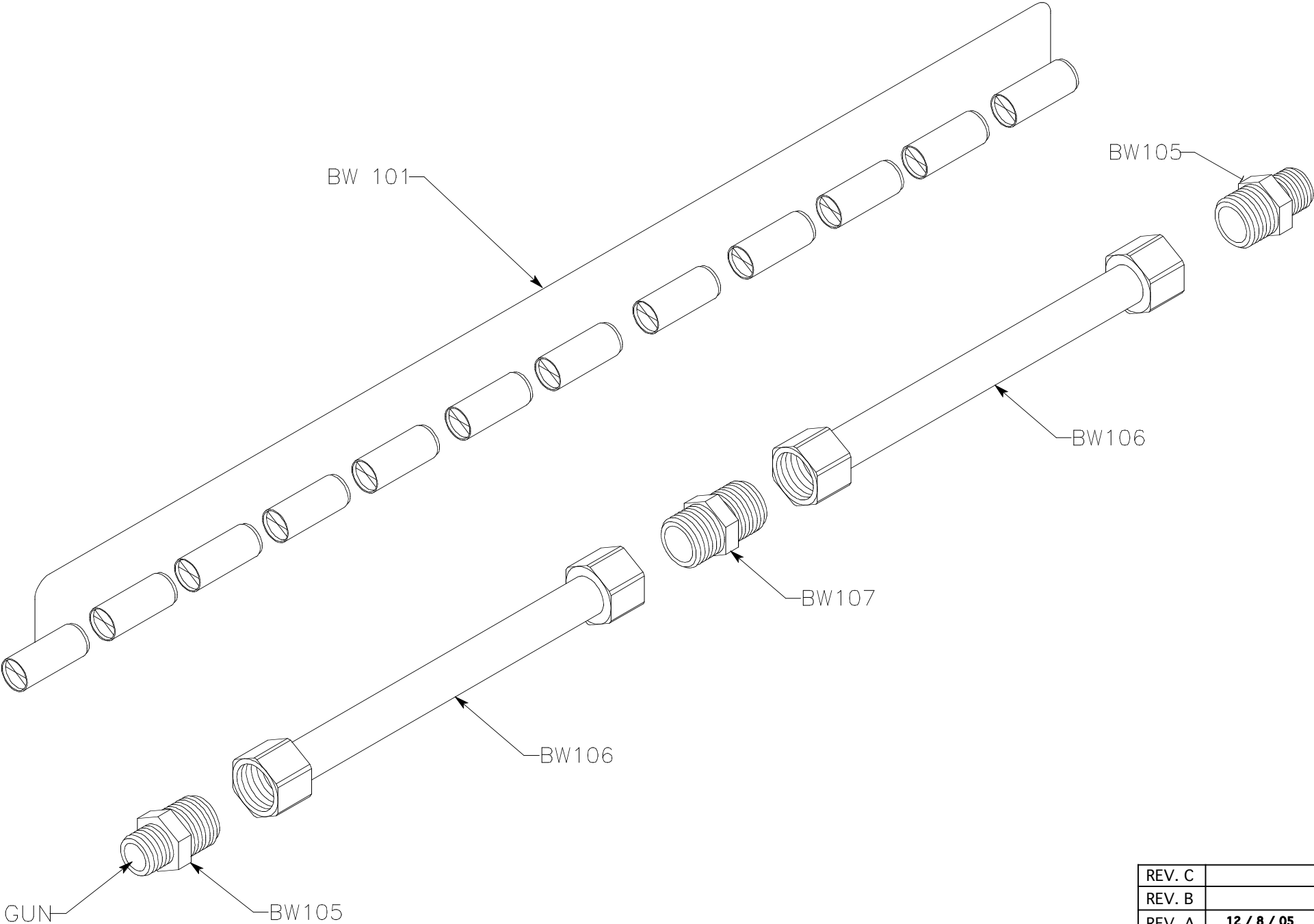
| | |
|--------|----------|
| REV. C | 12/29/08 |
| REV. B | 11/25/03 |
| REV. A | 10/15/01 |
| | |


BW 102-GS NOZZLE ASSEMBLY



| | |
|---|--------------|
| REV. C | |
| REV. B | 12 / 8 / 05 |
| REV. A | 2 / 8 / 02 |
|  MFG | 10 / 15 / 01 |

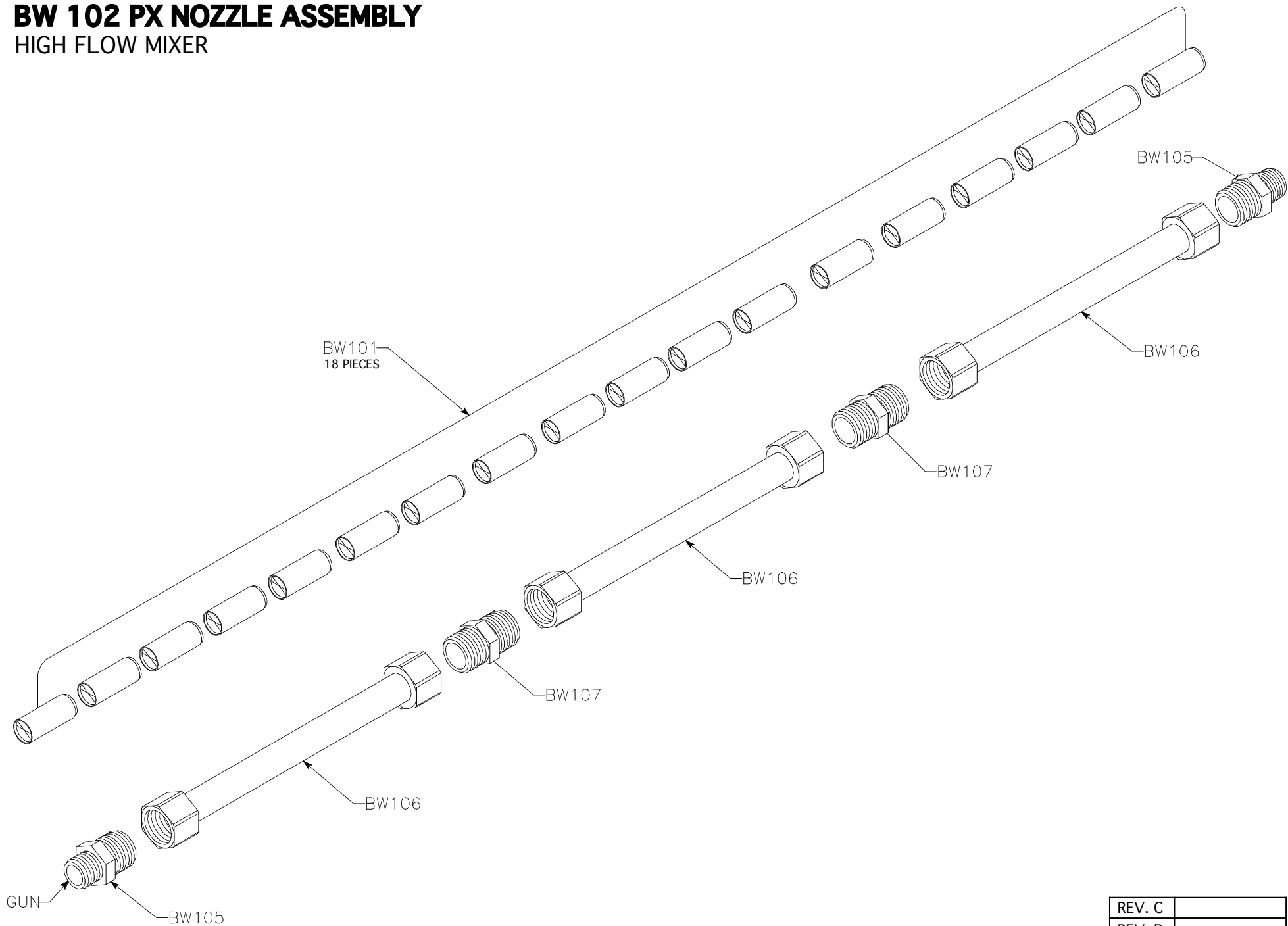
BW 102 NOZZLE ASSEMBLY




| | |
|---|--------------|
| REV. C | |
| REV. B | |
| REV. A | 12 / 8 / 05 |
|  MFG | 10 / 15 / 01 |

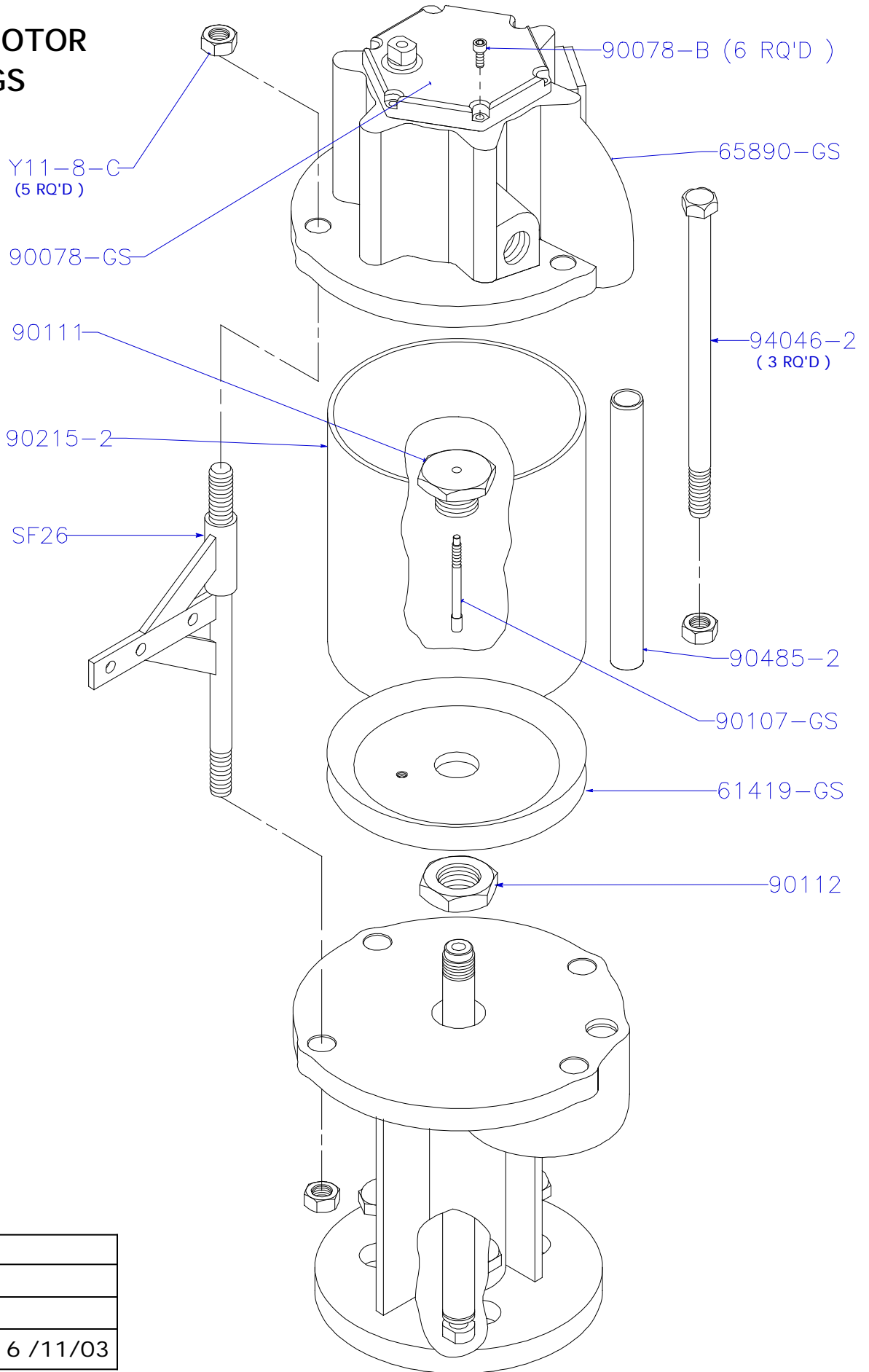
BW 102 PX NOZZLE ASSEMBLY


HIGH FLOW MIXER



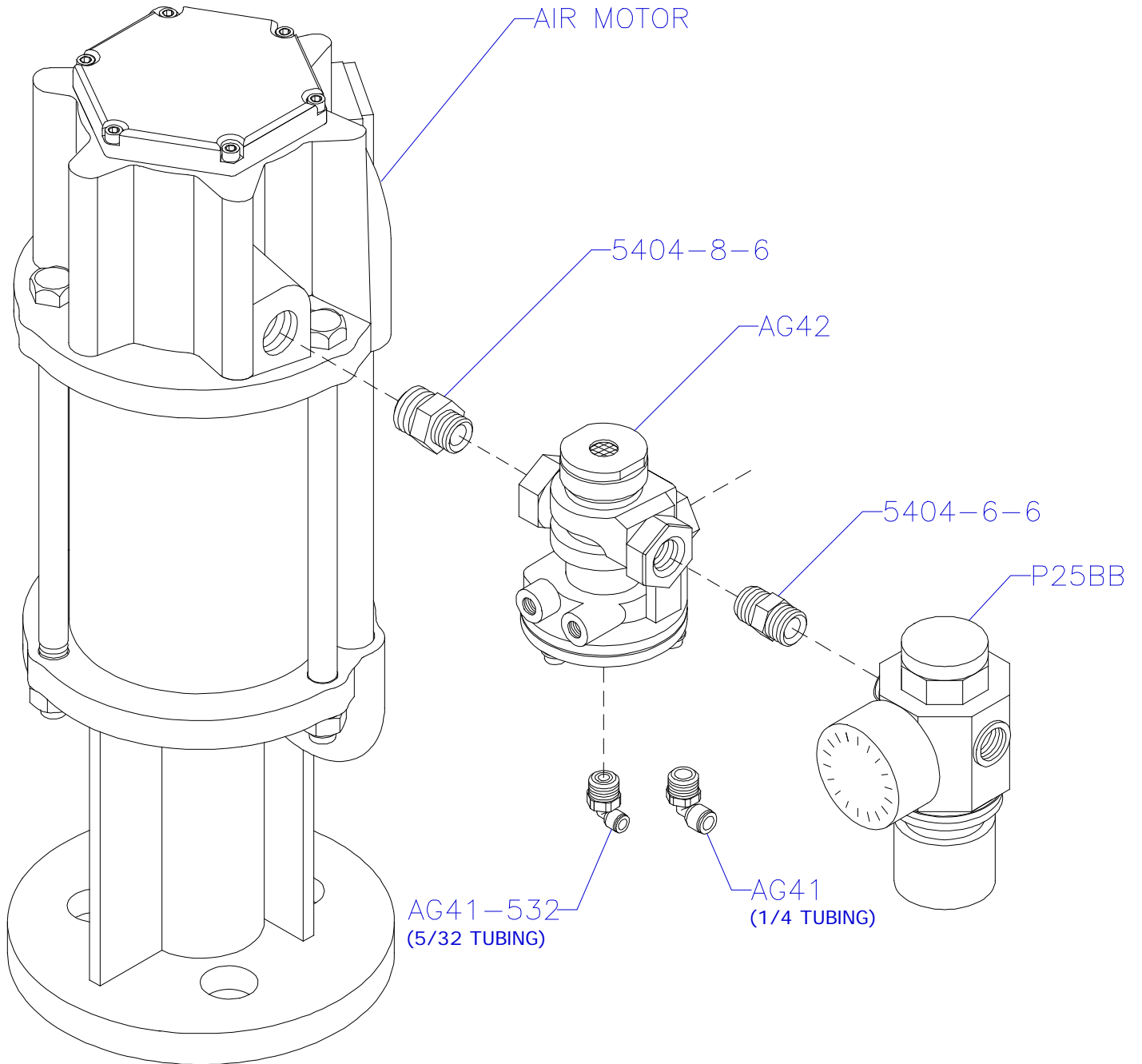
| | |
|--|-------------|
| REV. C | |
| REV. B | |
| REV. A | 12 / 8 / 05 |
|  GS MFG | 2 / 8 / 02 |


6" AIR MOTOR 65665-GS



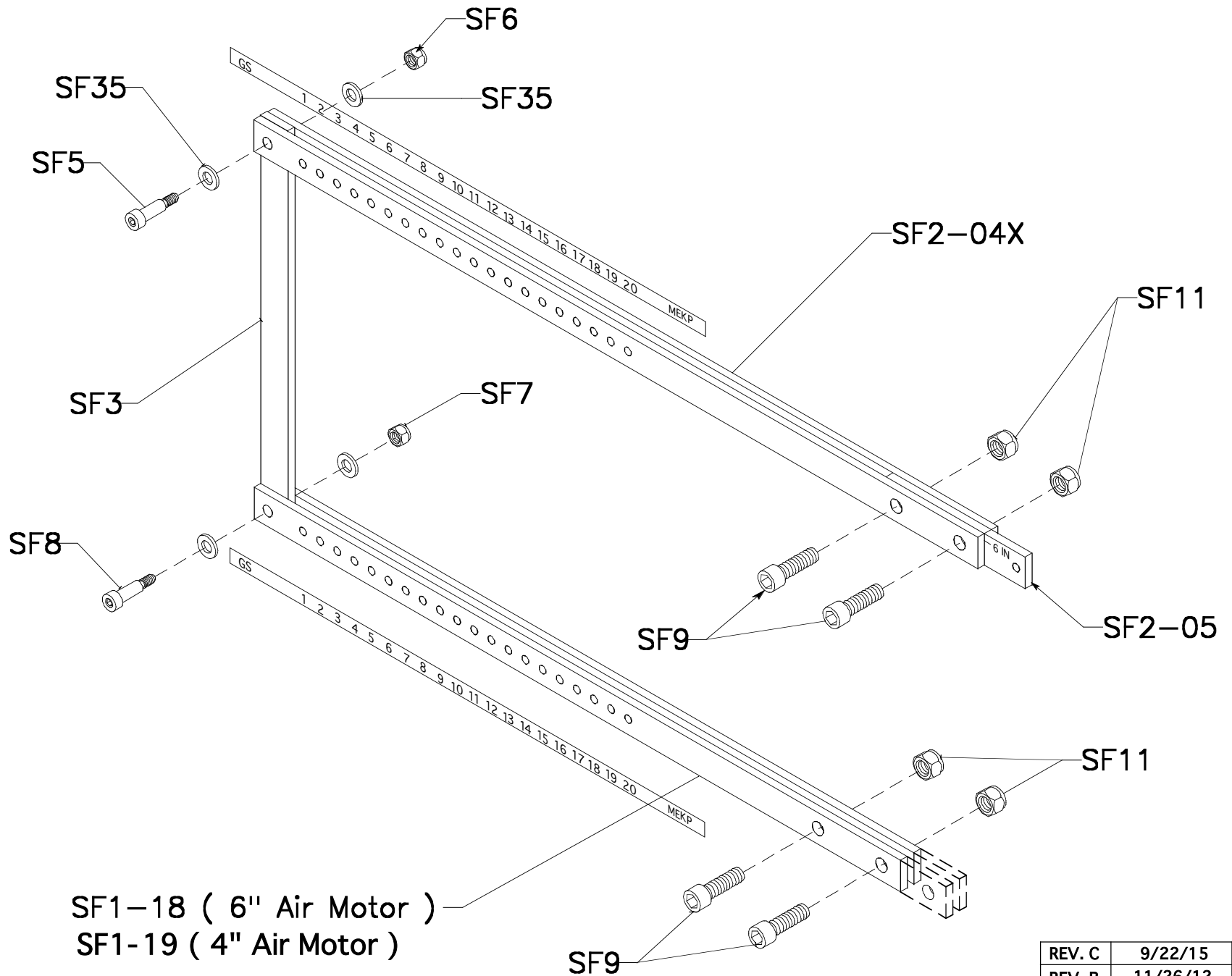
| | |
|---|----------|
| REV. C | |
| REV. B | |
| REV. A | |
|  MFG | 6 /11/03 |

RAM / TRANSFER PUMP SHUTTLE ASSEMBLY




| | |
|---|----------|
| REV. C | |
| REV. B | |
| REV. A | 12/17/01 |
|  | |

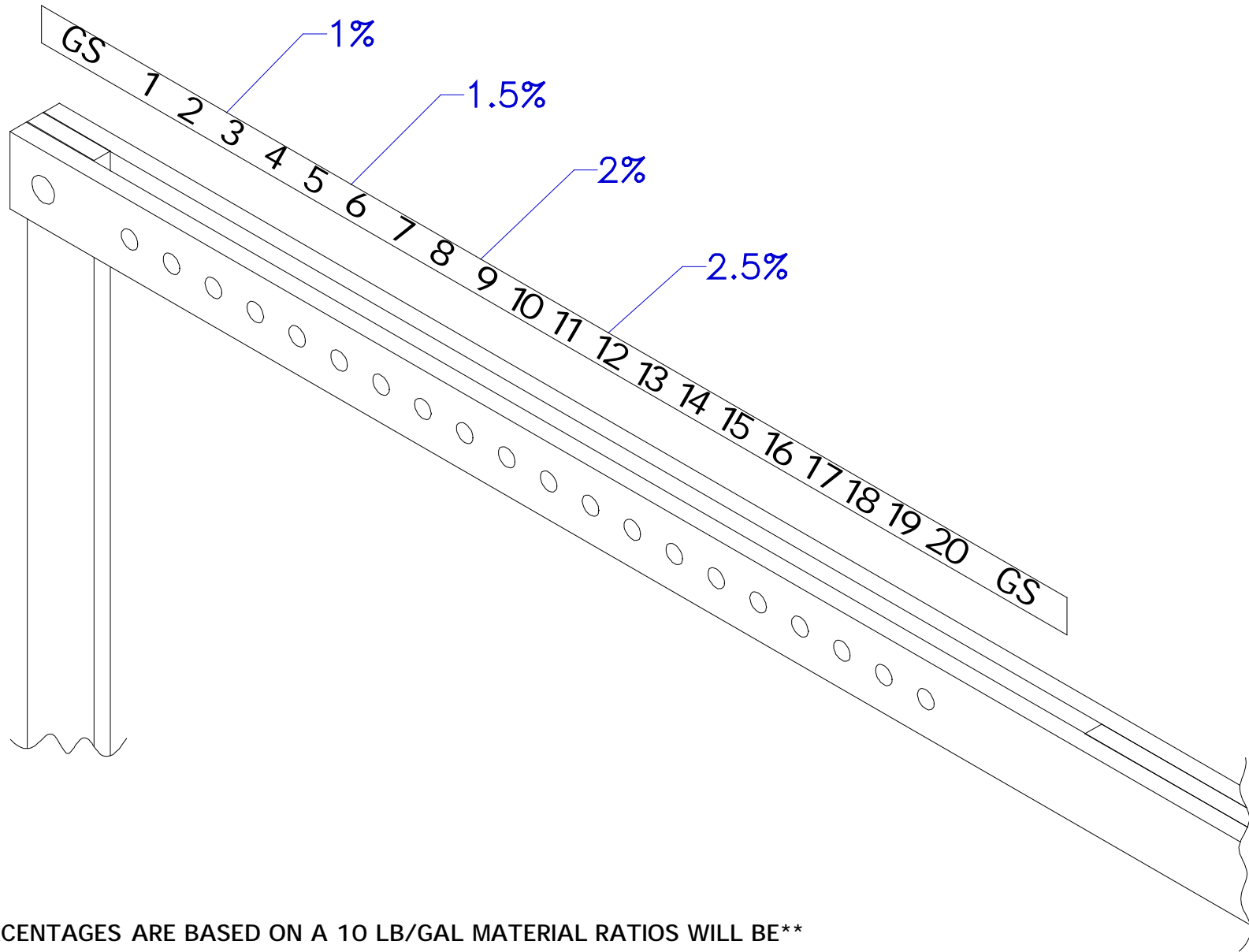
S200X-SLAVE ARM ASSEMBLY
BWX-LWX



SF1-18 (6" Air Motor)
 SF1-19 (4" Air Motor)

| | |
|---|----------|
| REV. C | 9/22/15 |
| REV. B | 11/26/12 |
| REV. A | 3/23/06 |
|  MFG | 5/20/03 |

PUTTY UNIT MEKP PERCENTAGES



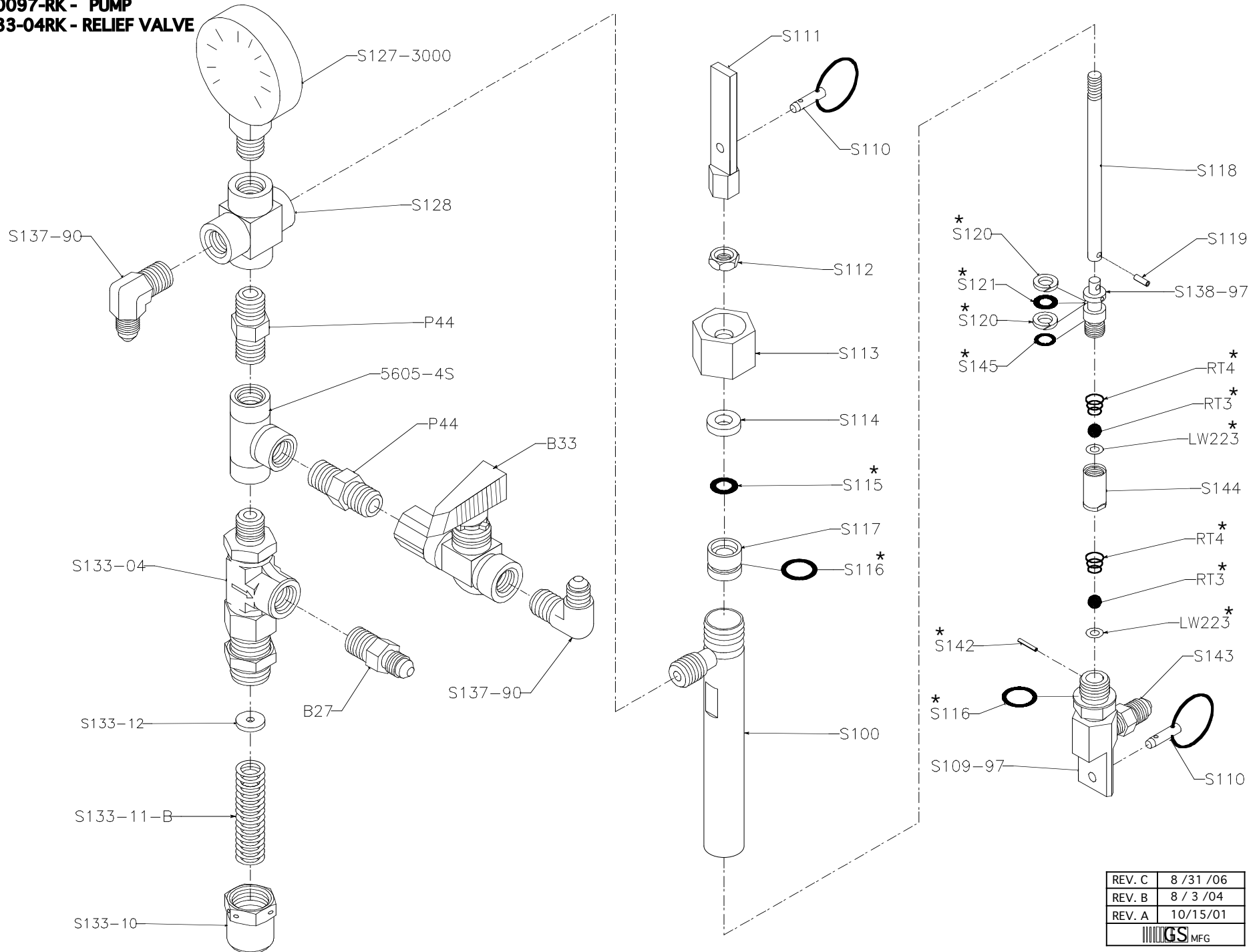
****PERCENTAGES ARE BASED ON A 10 LB/GAL MATERIAL RATIOS WILL BE**
RICH IF THE MATERIAL IS LIGHTER(1% MIGHT ACTUALLY BE 1.5%).**

S1000-3000-04

REBUILD KITS:

* S10097-RK - PUMP

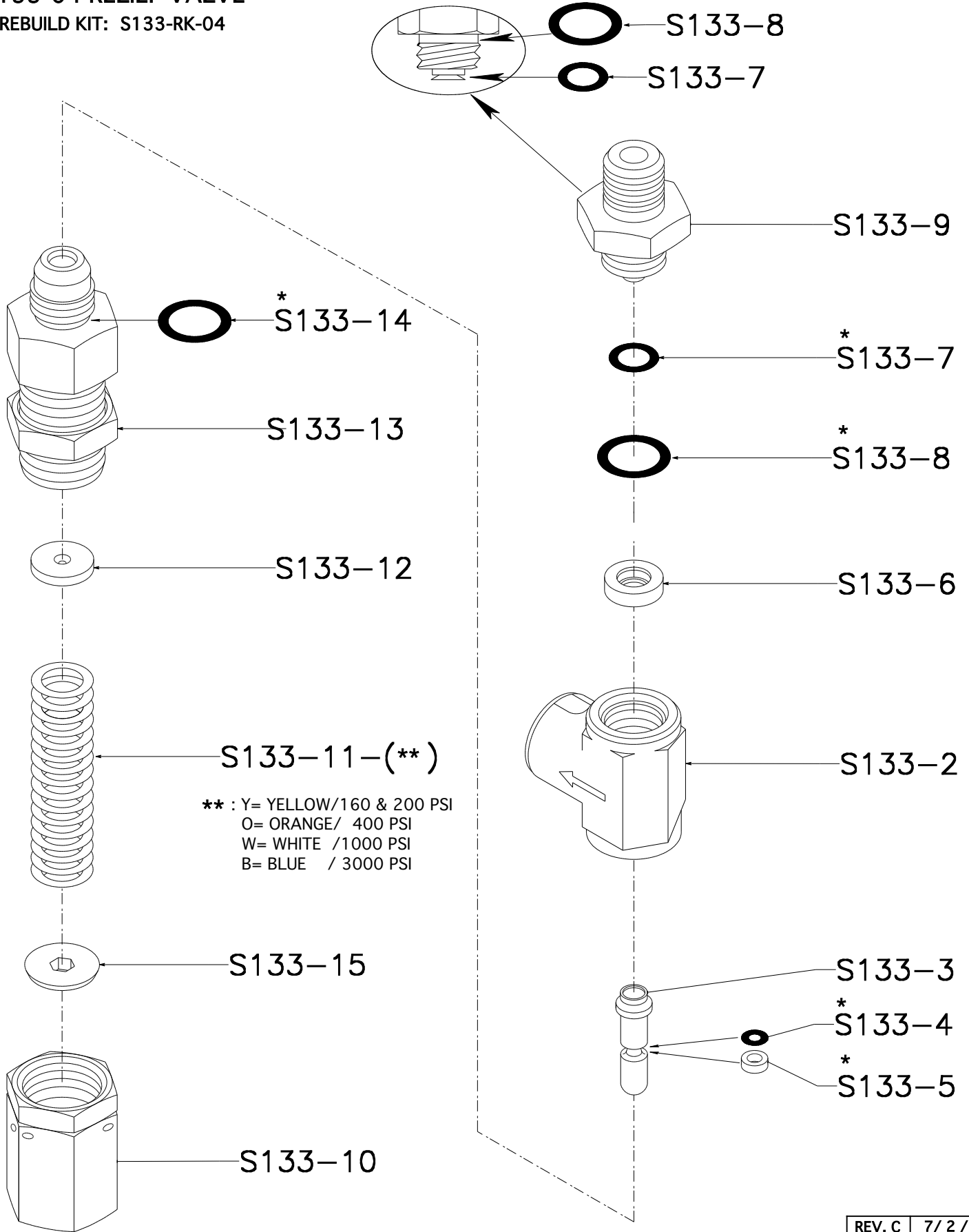
S133-04RK - RELIEF VALVE



| | |
|--------|--------------|
| REV. C | 8 / 31 / 06 |
| REV. B | 8 / 3 / 04 |
| REV. A | 10 / 15 / 01 |
| | |

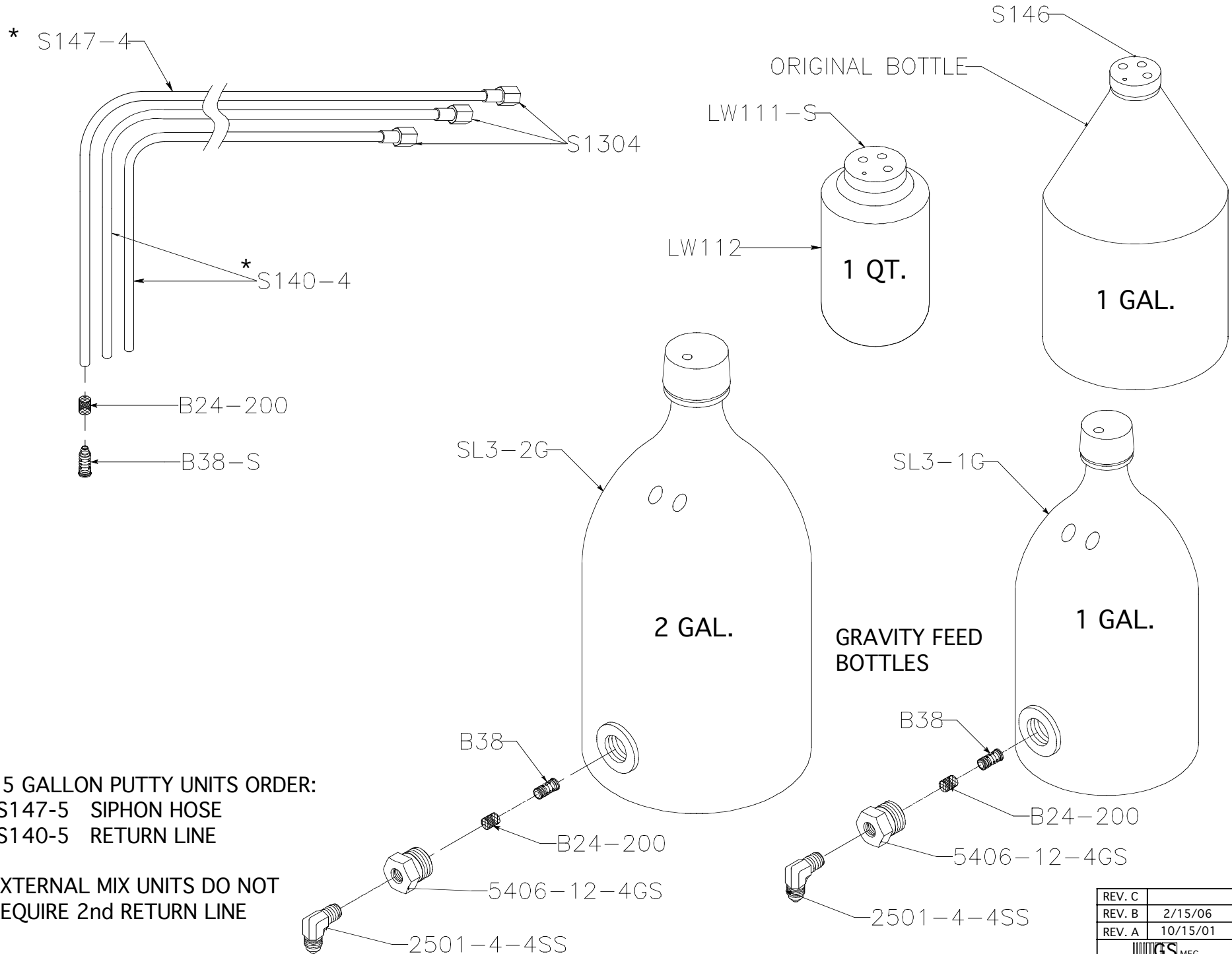
S133-04 RELIEF VALVE

* REBUILD KIT: S133-RK-04



| | |
|--------|------------|
| REV. C | 7/ 2 / 09 |
| REV. B | 10/8/ 08 |
| REV. A | 5/ 5 / 08 |
| GS MFG | 8 / 3 / 04 |

MEKP SIPHON HOSES / BOTTLES

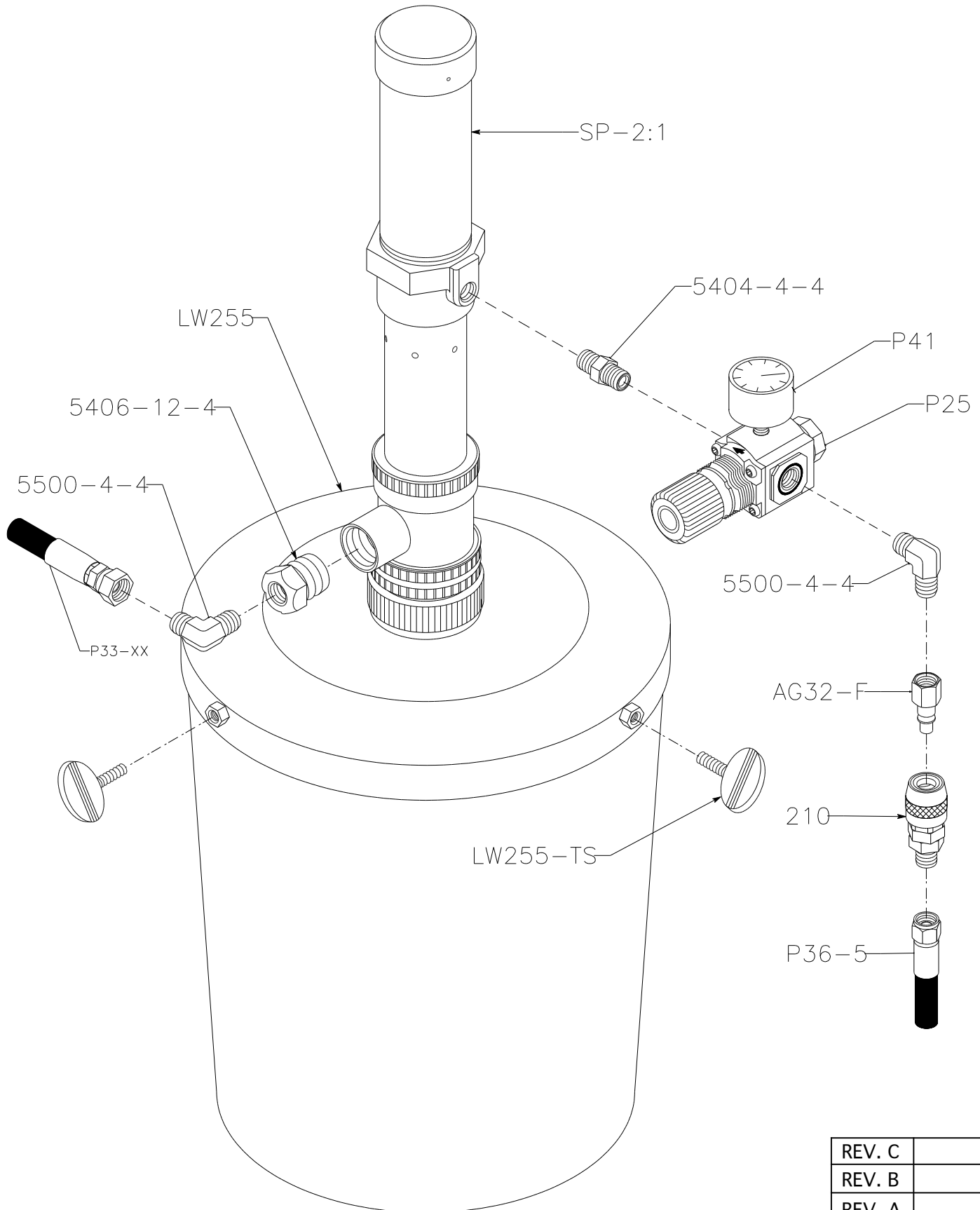



*. 55 GALLON PUTTY UNITS ORDER:
 -S147-5 SIPHON HOSE
 -S140-5 RETURN LINE

EXTERNAL MIX UNITS DO NOT
 REQUIRE 2nd RETURN LINE

| | |
|--------|----------|
| REV. C | |
| REV. B | 2/15/06 |
| REV. A | 10/15/01 |
| | |

SOLVENT PUMP



| | |
|---|------------|
| REV. C | |
| REV. B | |
| REV. A | |
|  MFG | 11 /13/ 12 |