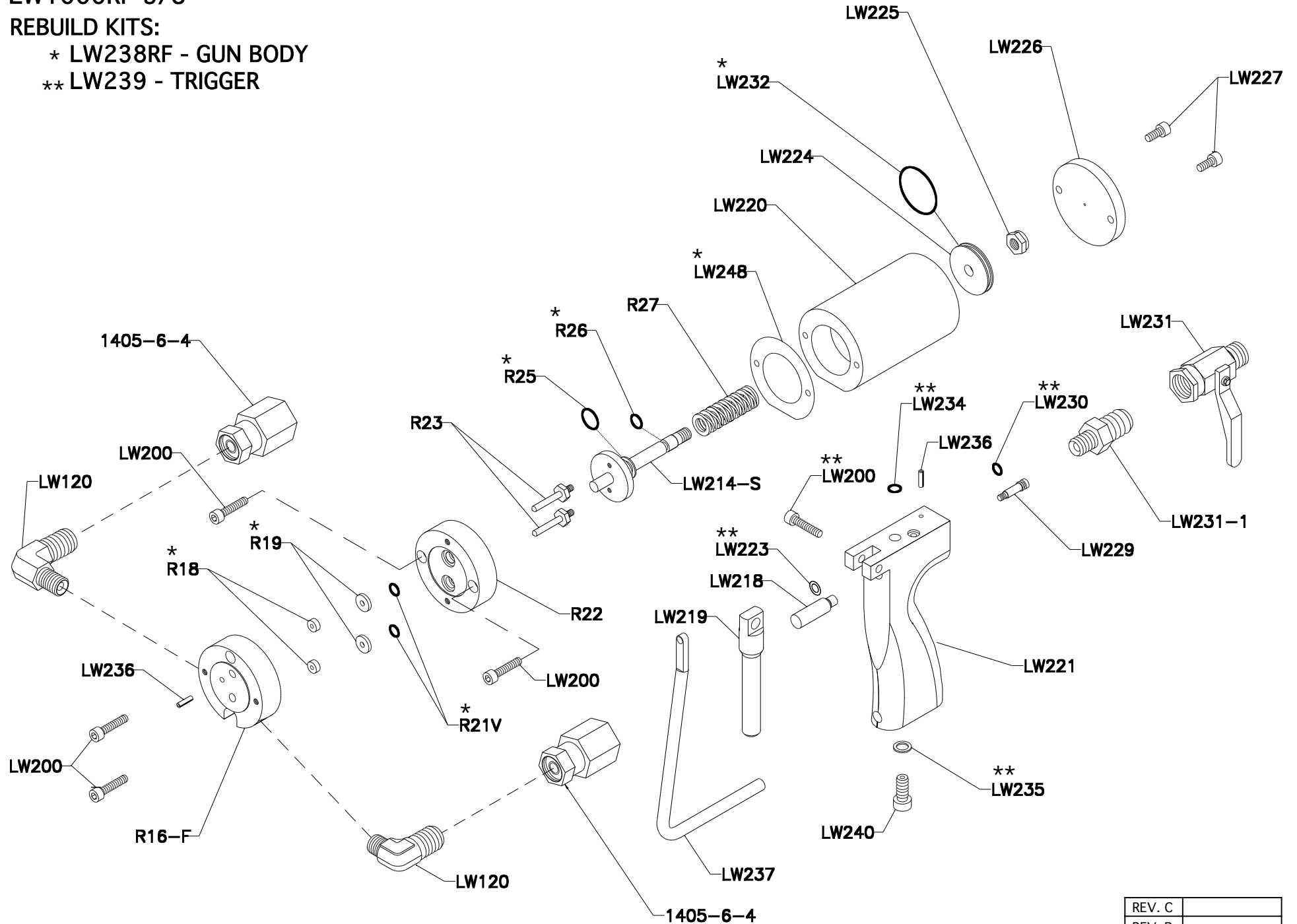



LW1000RF-3/8

REBUILD KITS:

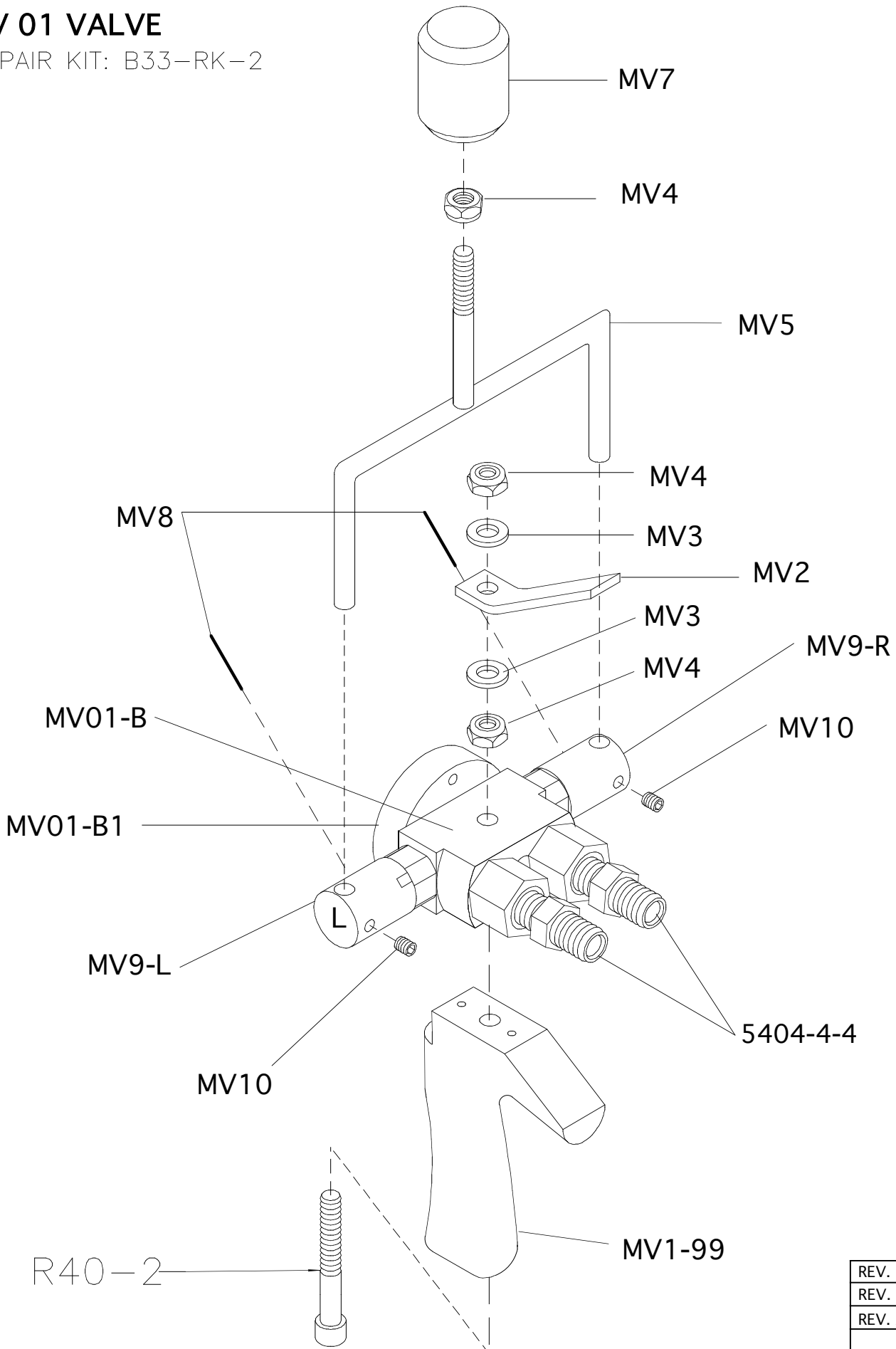
- * LW238RF - GUN BODY
- ** LW239 - TRIGGER



REV. C	
REV. B	
REV. A	5/23 / 06
 GS MFG	6/ 25/ 04

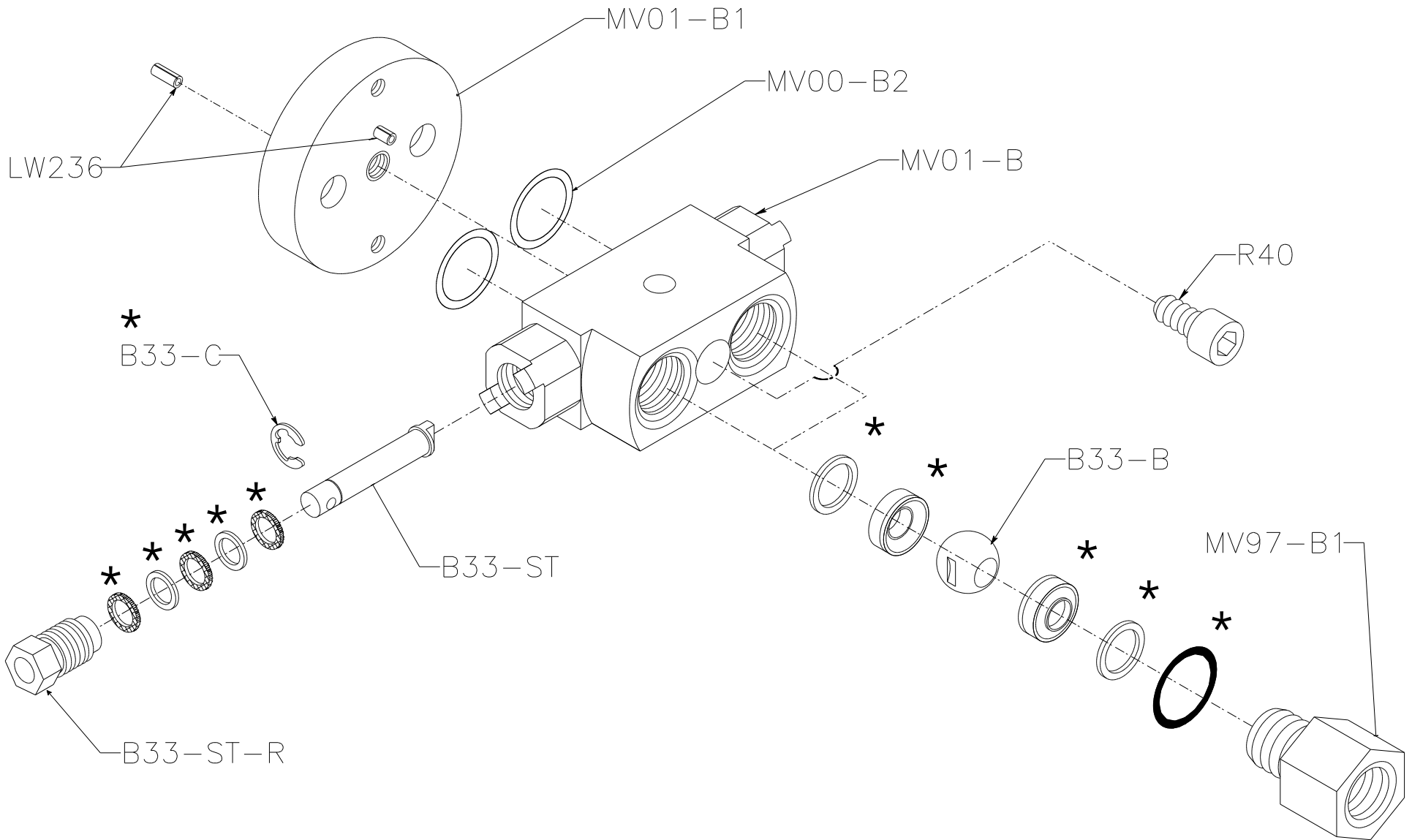
MV 01 VALVE

REPAIR KIT: B33-RK-2



REV. C	12/29/08
REV. B	11/25/03
REV. A	10/15/01

MV01-BA BODY ASSEMBLY



*: REPAIR KIT: B33-RK-2

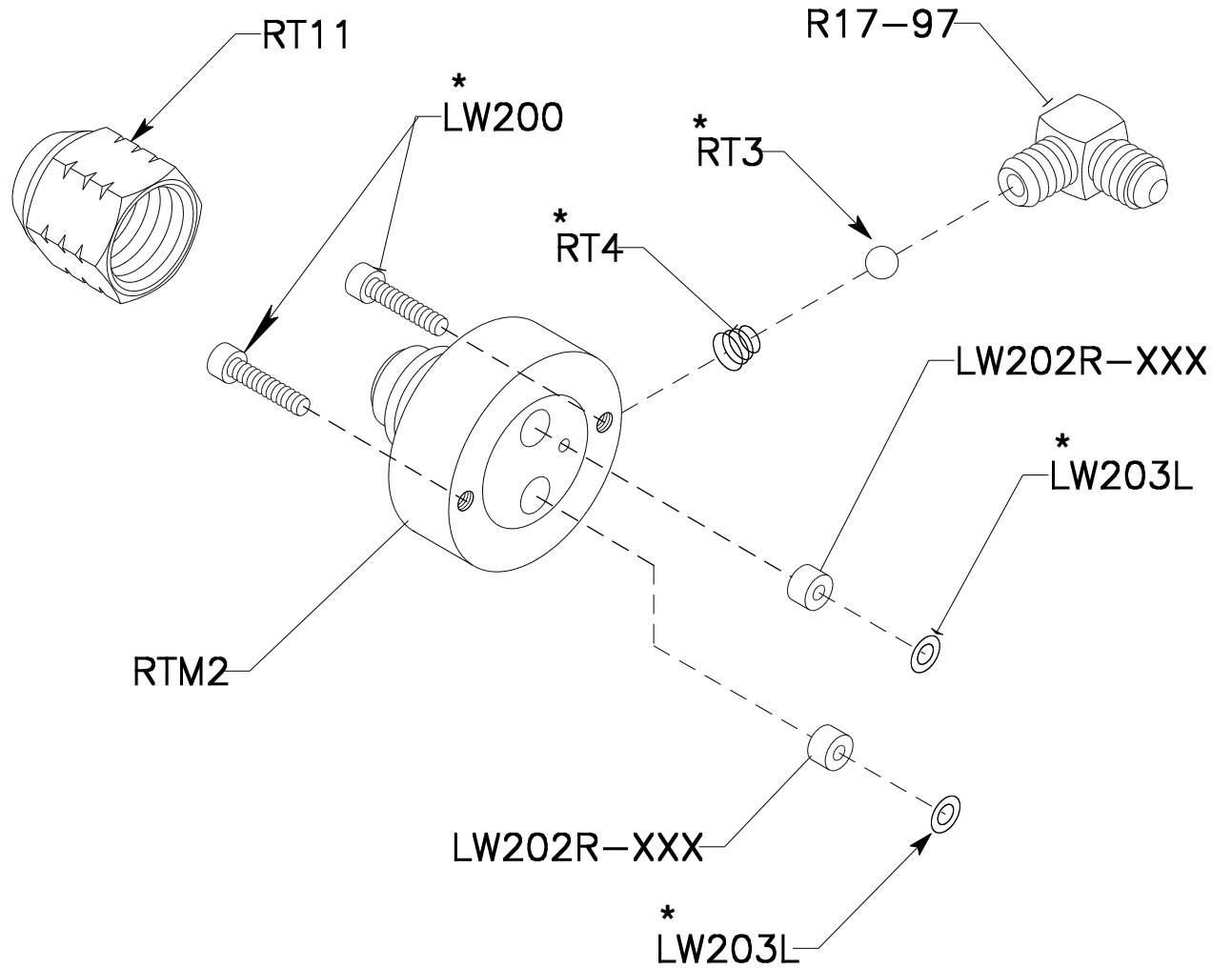
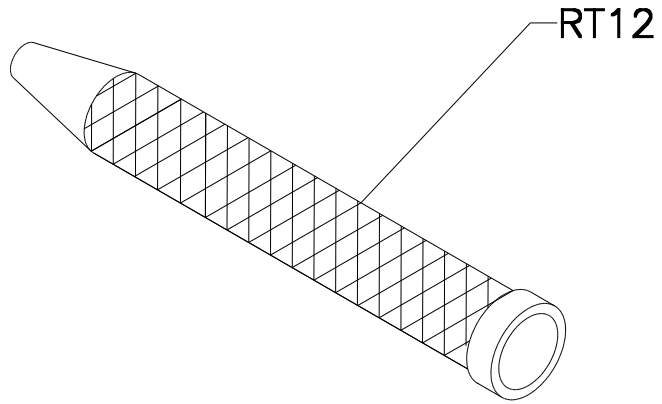
REV. C	1/ 5 /09
REV. B	7/11/07
REV. A	11/25/03


RTM2-A

1-1 NOZZLE

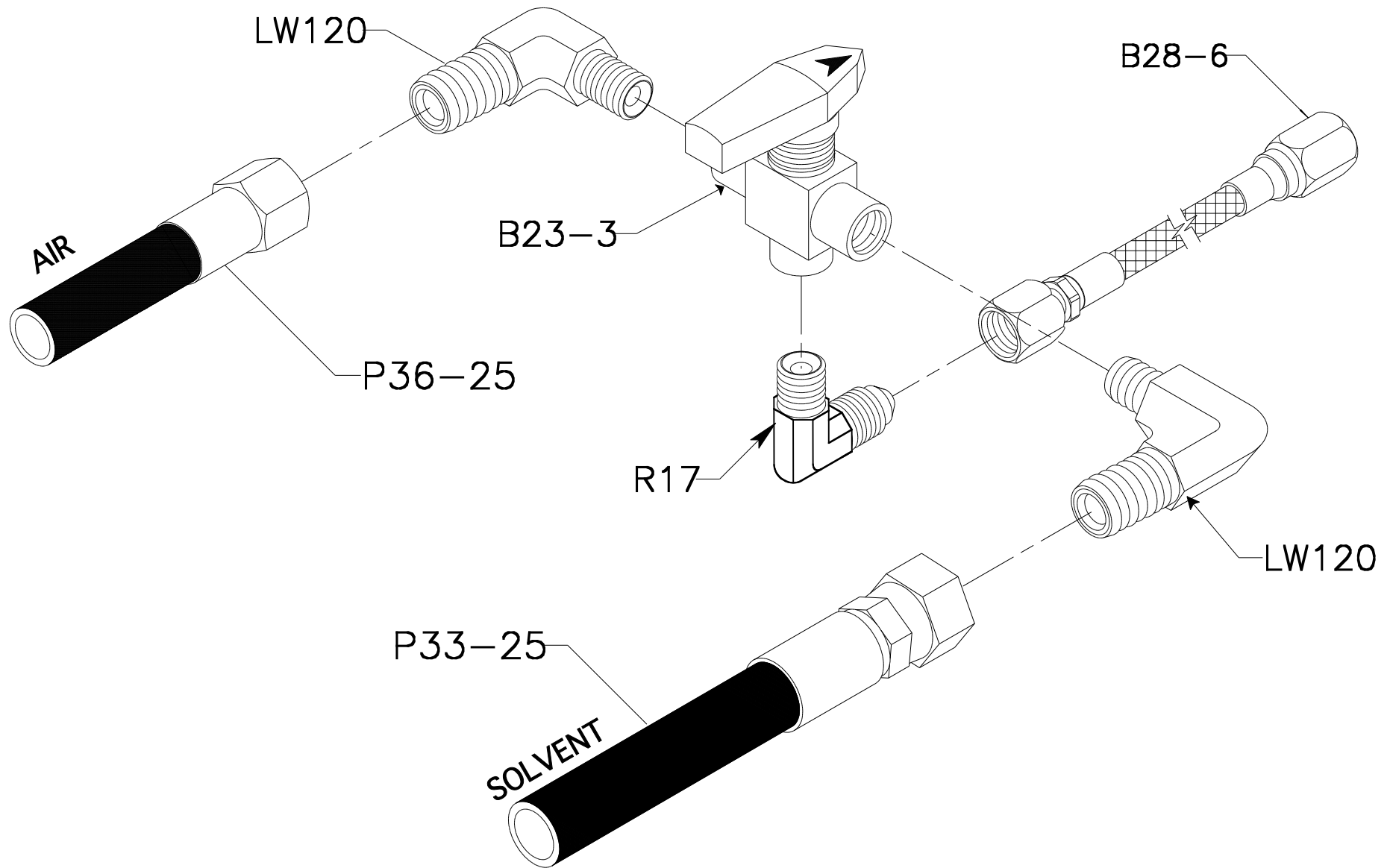
* :RTM2-RK


* :INDICATES PARTS INCLUDED IN KIT



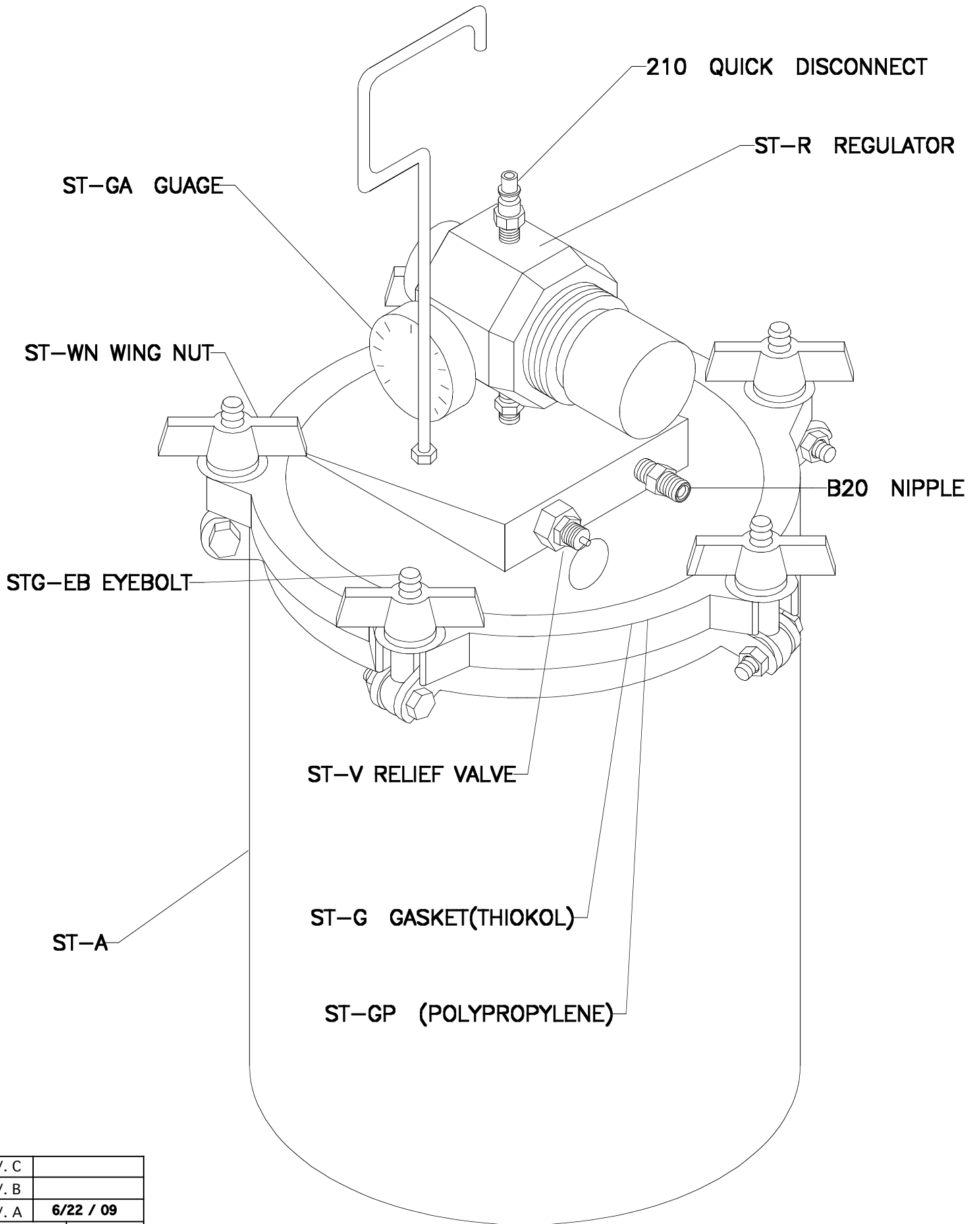
REV. C	
REV. B	
REV. A	6 /28/08
 MFG	12/14/00


PURGE VALVE ASSEMBLY



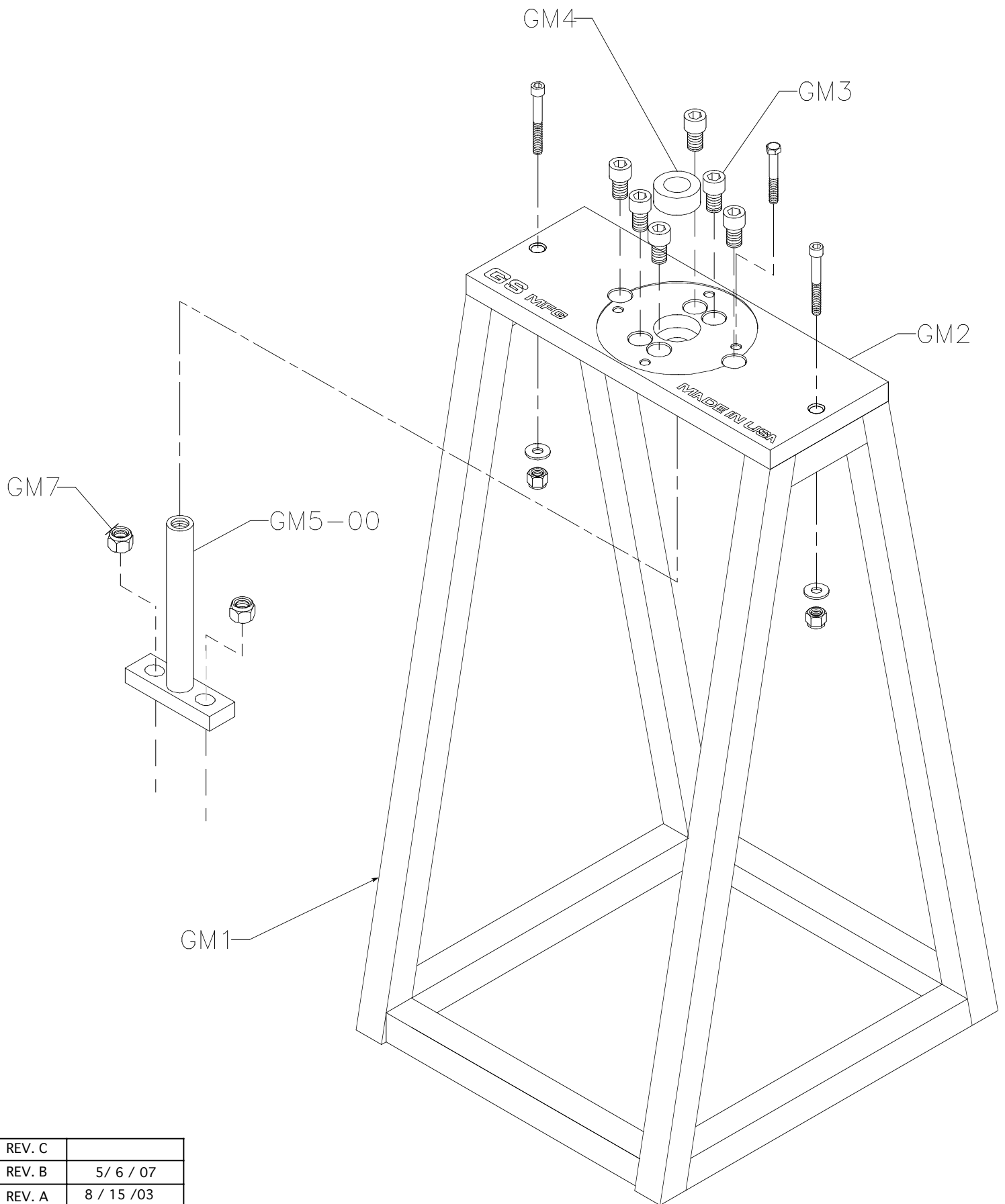
REV. C	
REV. B	2/22/10
REV. A	6/20/00
 GS MFG	9/12/97


SOLVENT TANK



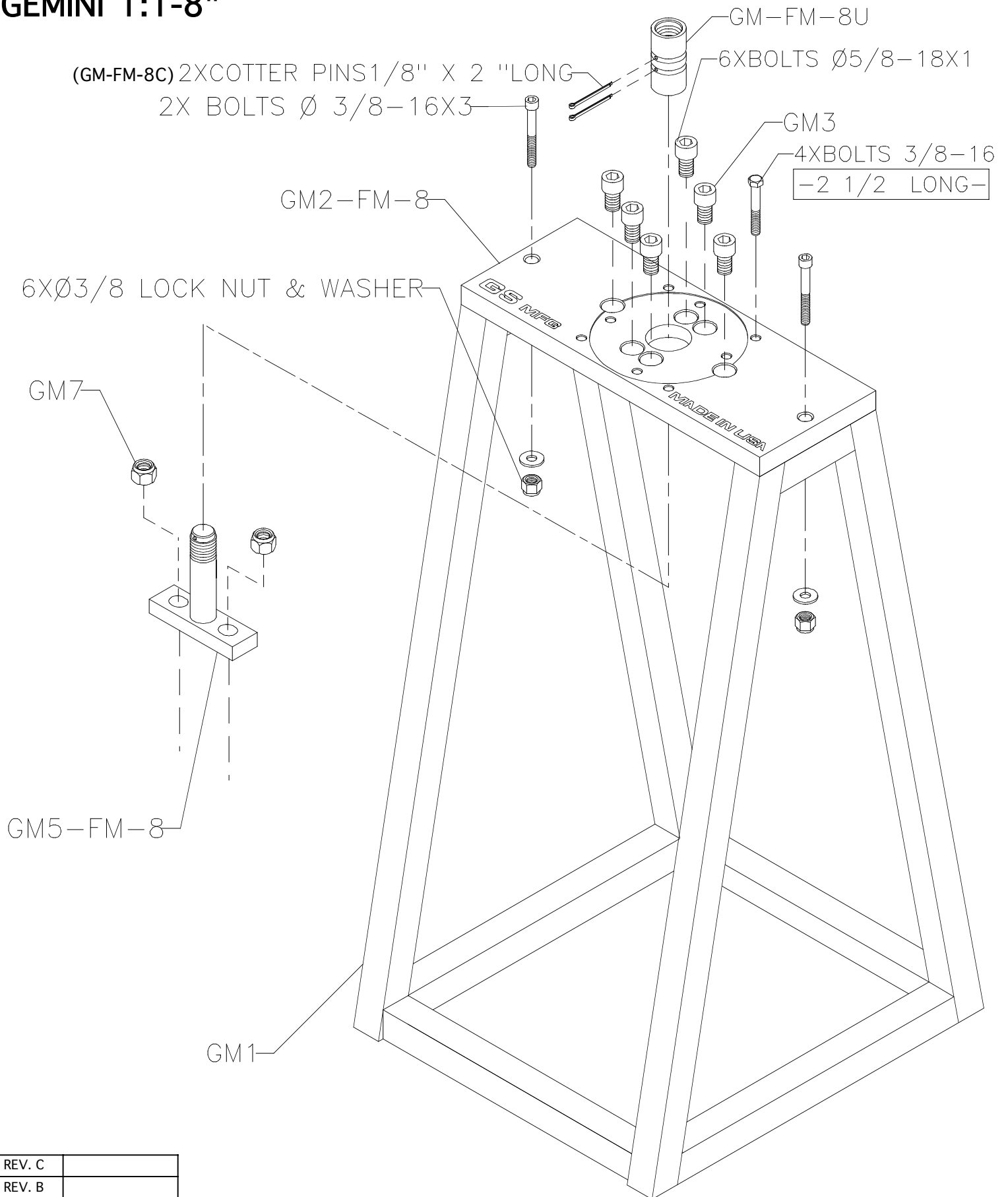
REV. C	
REV. B	
REV. A	6/22 / 09
 GS MFG	6/20/00

GEMINI 1:1



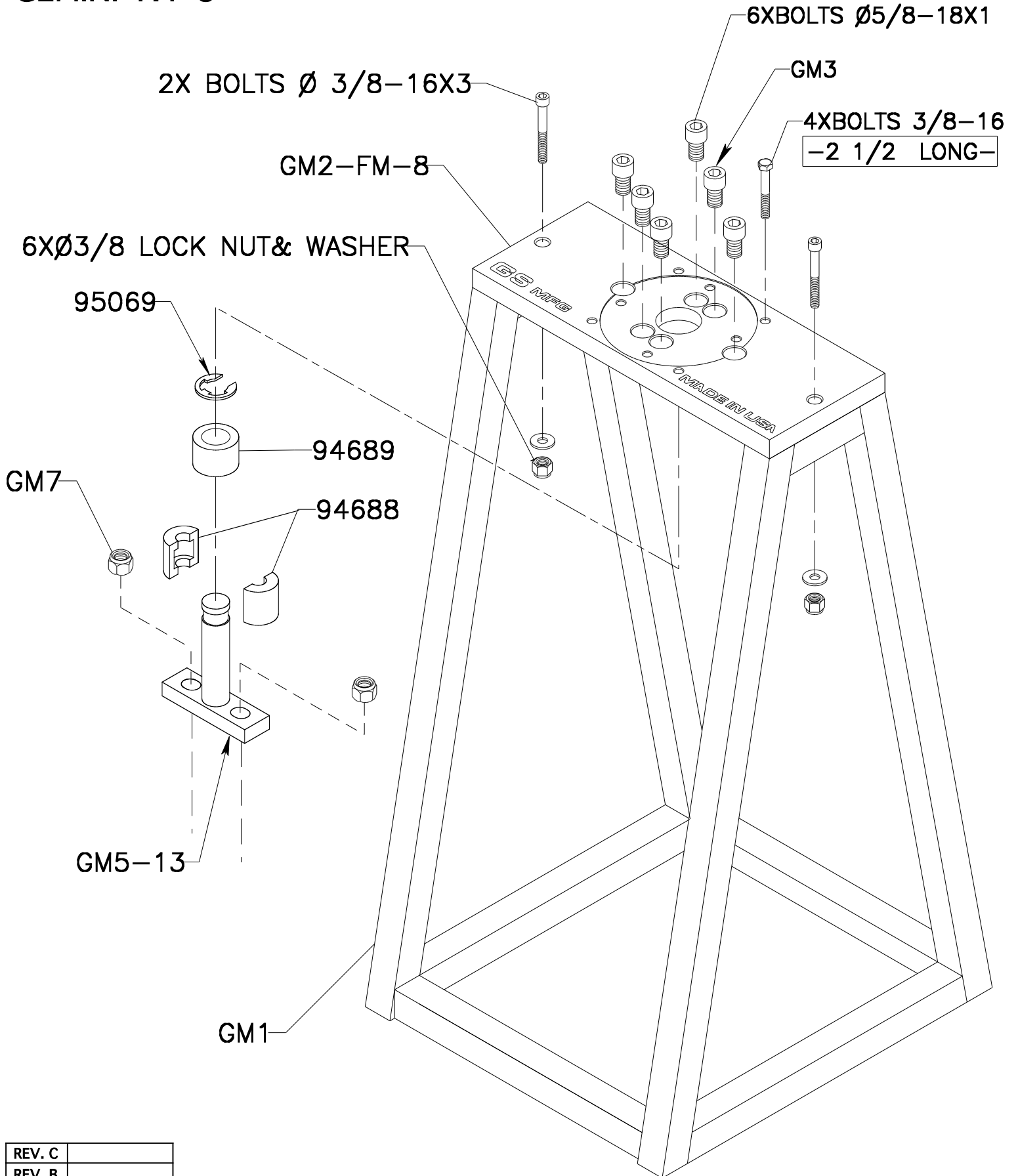
REV. C	
REV. B	5 / 6 / 07
REV. A	8 / 15 / 03
	


GEMINI 1:1-8"



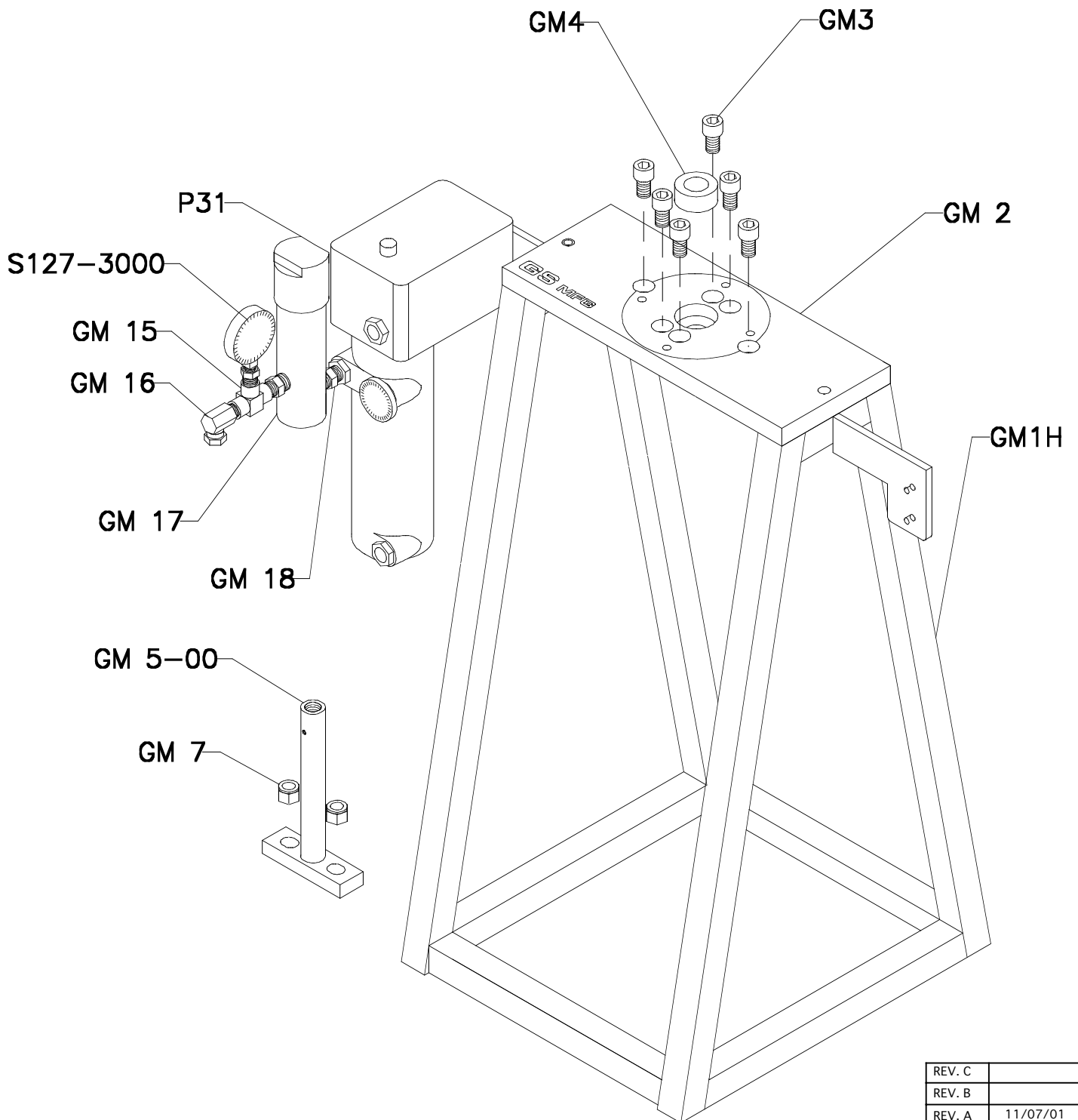
REV. C	
REV. B	
REV. A	4 / 29 / 07


GEMINI 1:1-8"



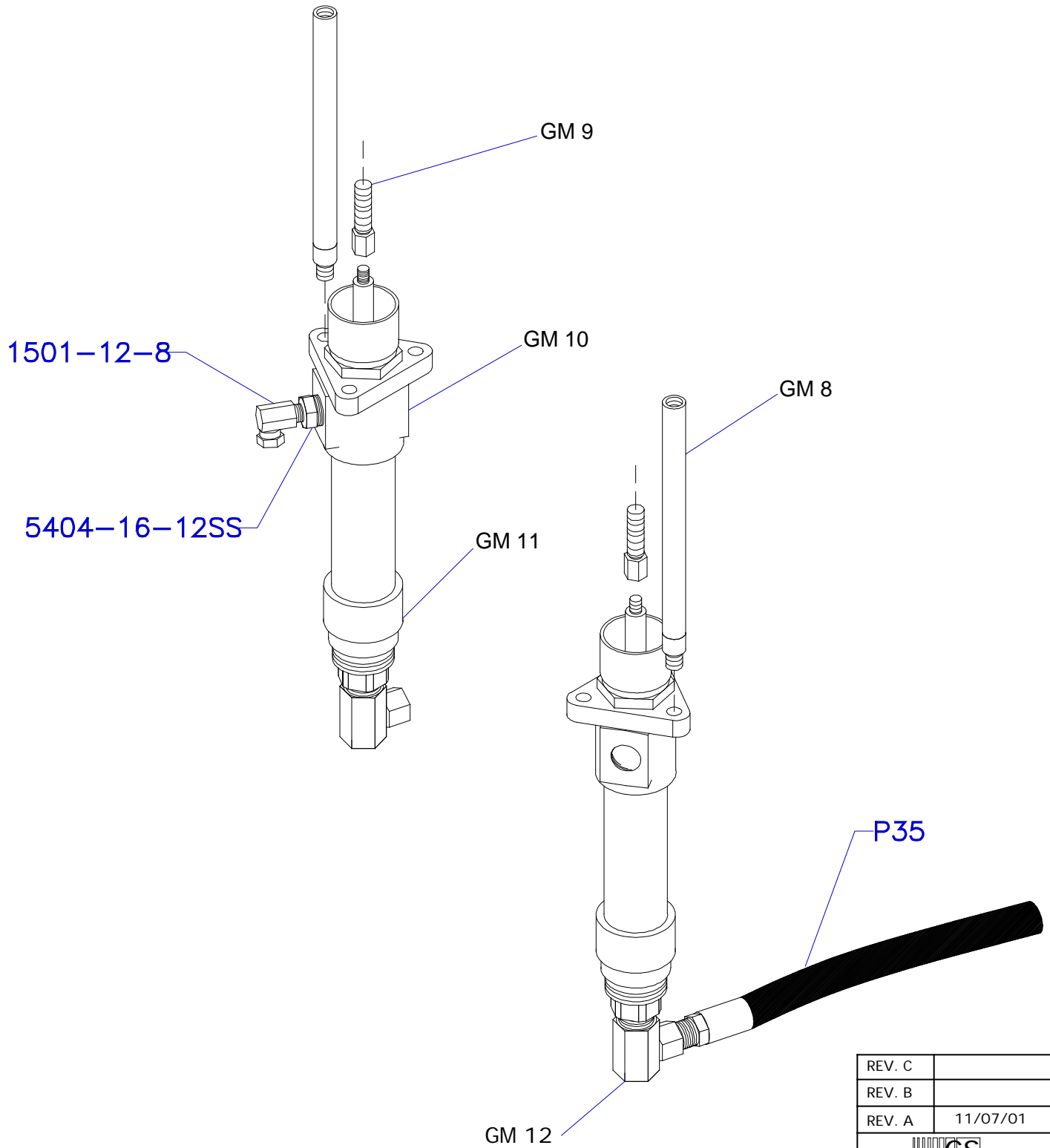
REV. C	
REV. B	
REV. A	2/ 18/15
 GS MFG	4 / 29 / 07


GEMINI 1:1 FRAME-00 (HEATED)



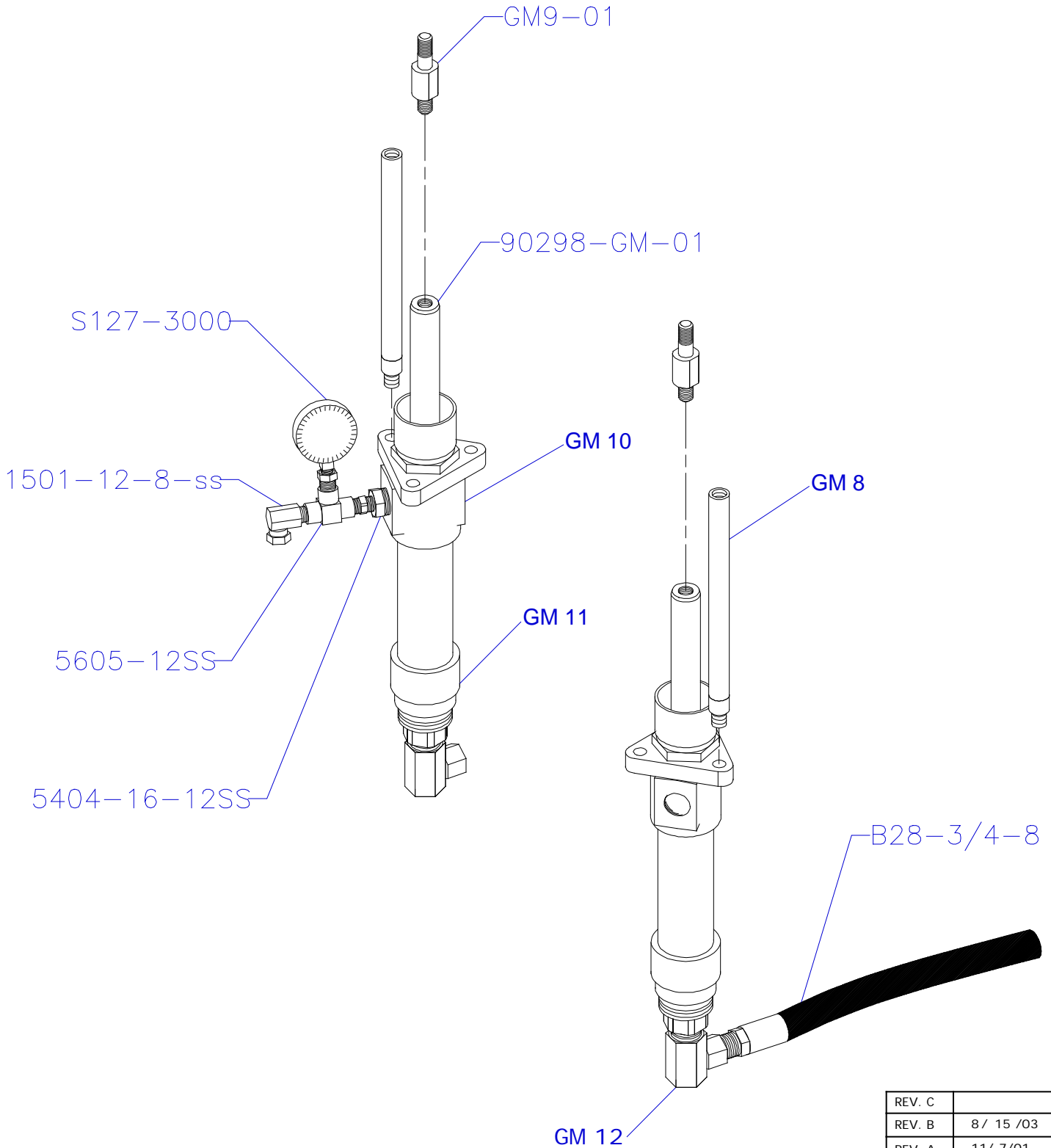
REV. C	
REV. B	
REV. A	11/07/01
	


GEMINI 1:1 PUMPS (HEATED)



REV. C	
REV. B	
REV. A	11/07/01
 GS MFG	

GEMINI 1:1 PUMPS (ADHESIVES)



REV. C	
REV. B	8 / 15 /03
REV. A	11 / 7/01
	

GEMINI 1:1 (RESINS)

