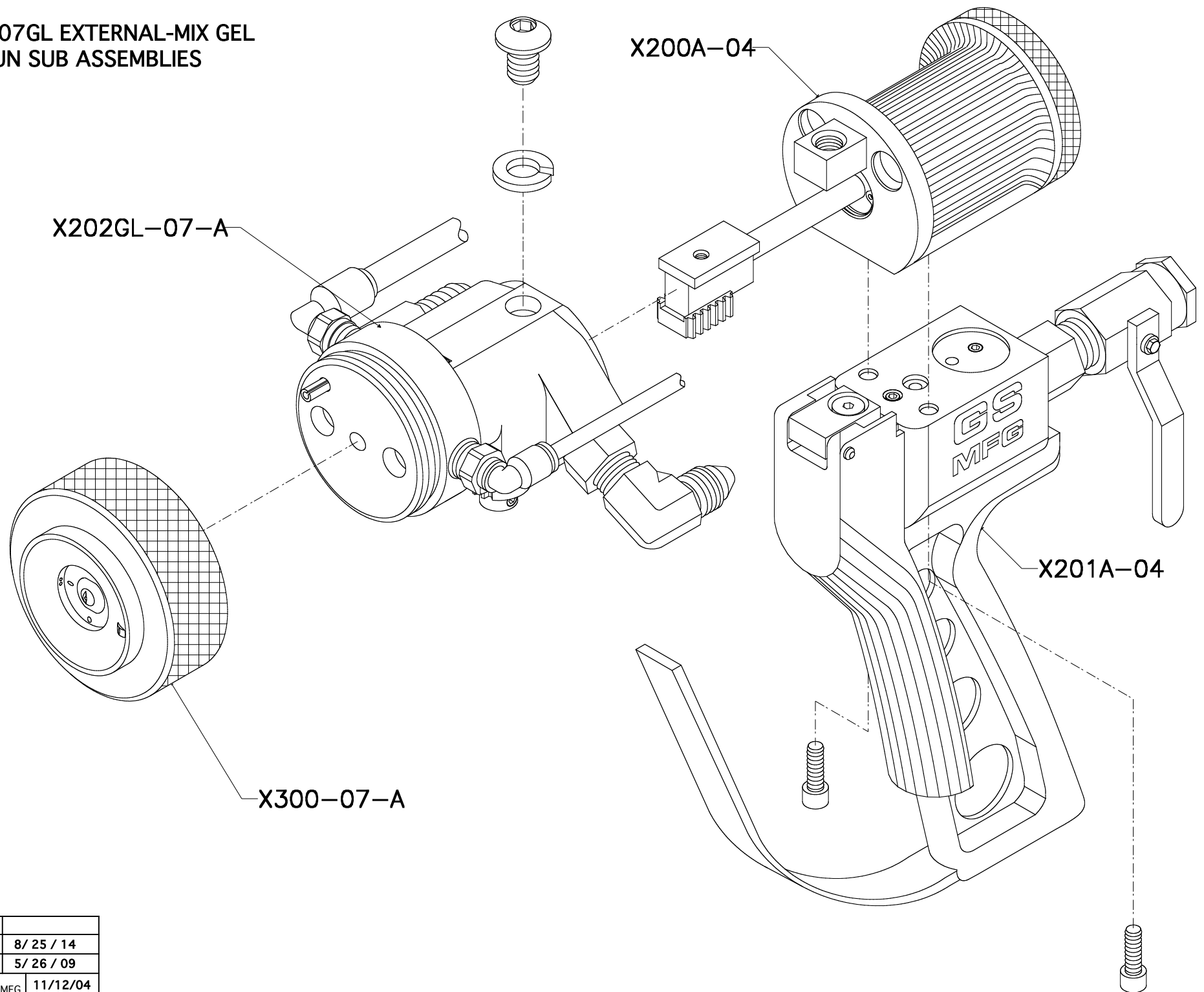



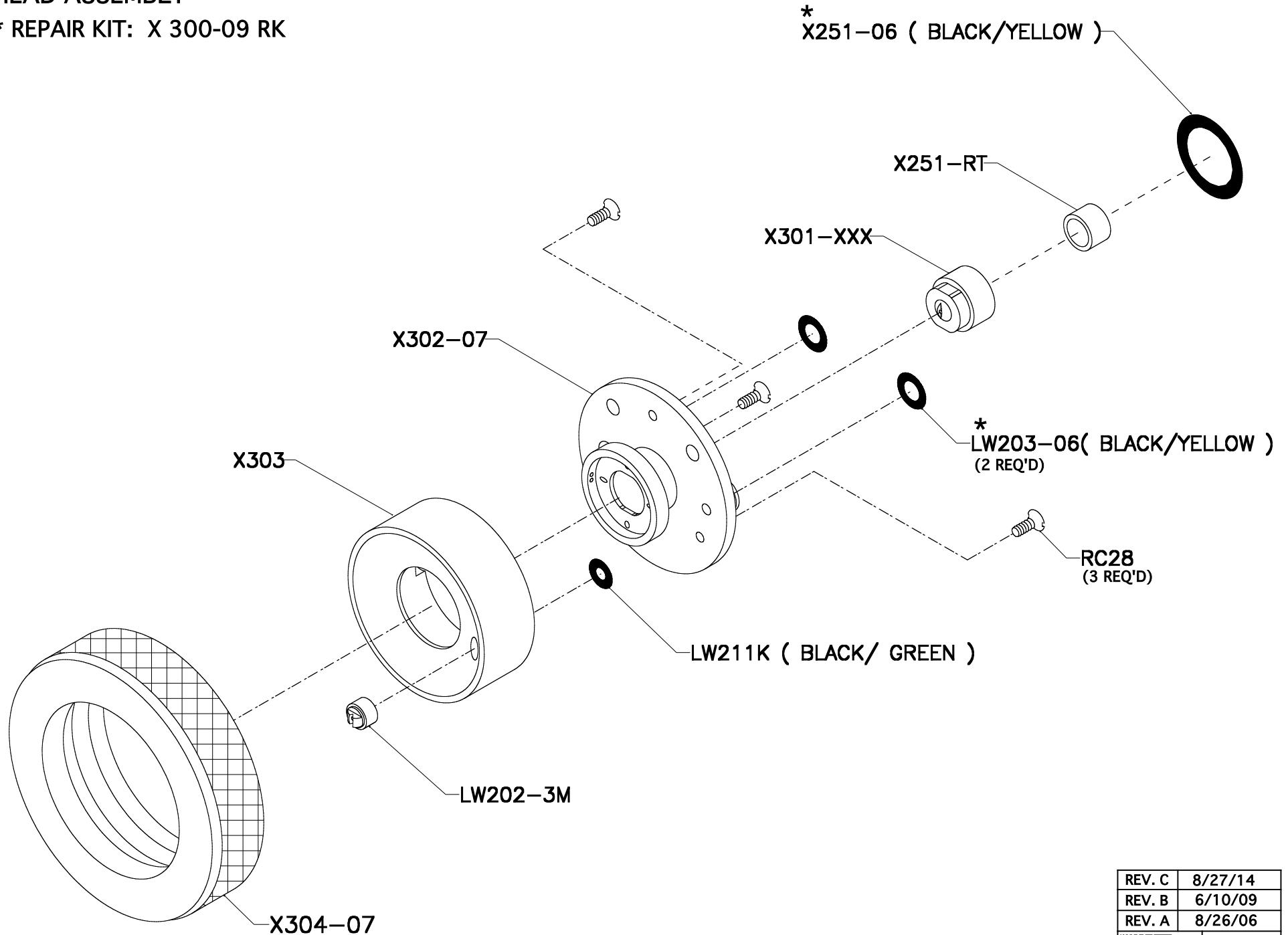
X2007GL EXTERNAL-MIX GEL
X-GUN SUB ASSEMBLIES




REV. C	
REV. B	8/ 25 / 14
REV. A	5/ 26 / 09
 GS MFG	11/12/04

**X300-09A GEL FLUID
HEAD ASSEMBLY**

*** REPAIR KIT: X 300-09 RK**



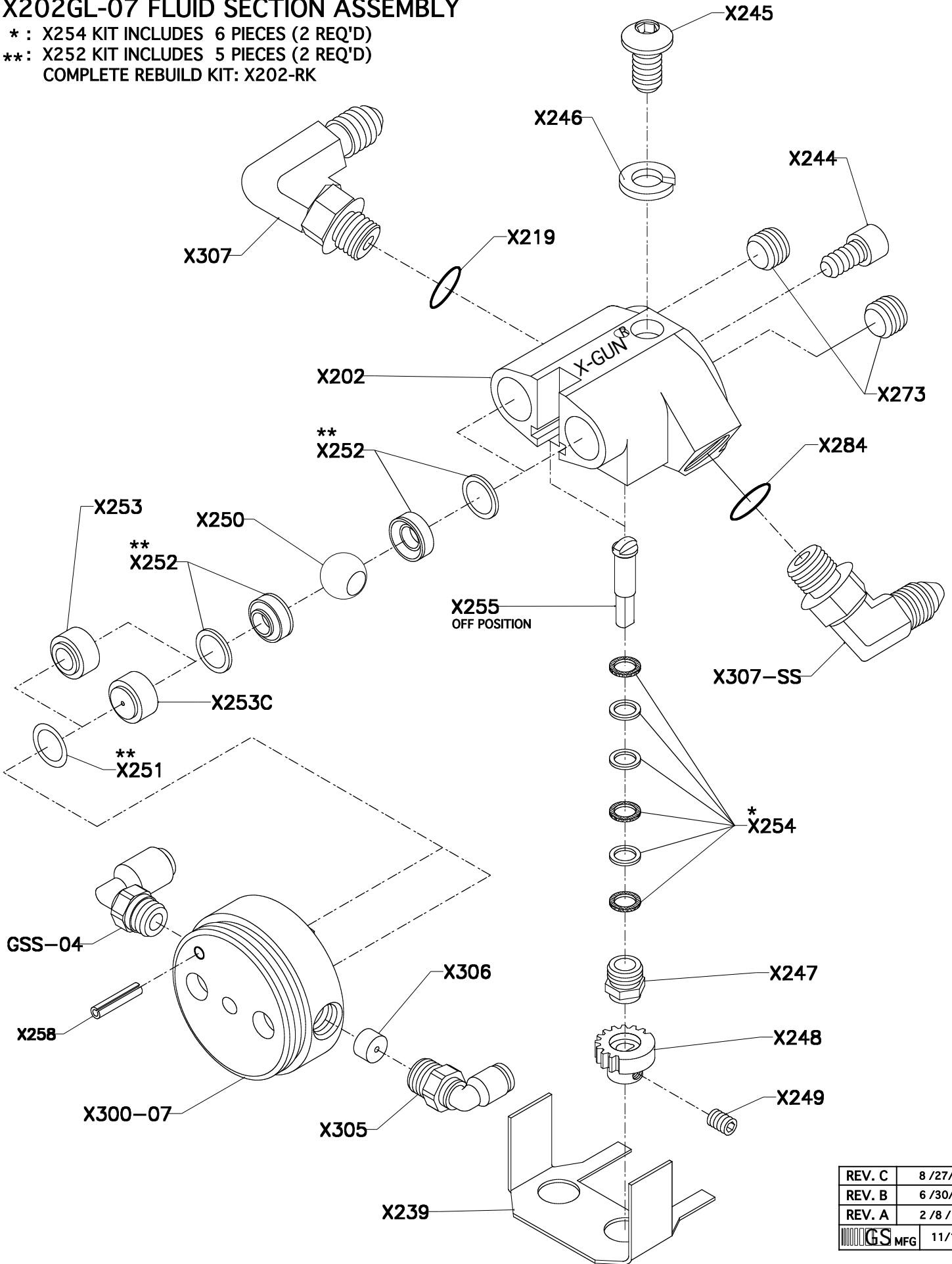
REV. C	8/27/14
REV. B	6/10/09
REV. A	8/26/06
 MFG	11/1/04

X202GL-07 FLUID SECTION ASSEMBLY

* : X254 KIT INCLUDES 6 PIECES (2 REQ'D)

** : X252 KIT INCLUDES 5 PIECES (2 REQ'D)

COMPLETE REBUILD KIT: X202-RK

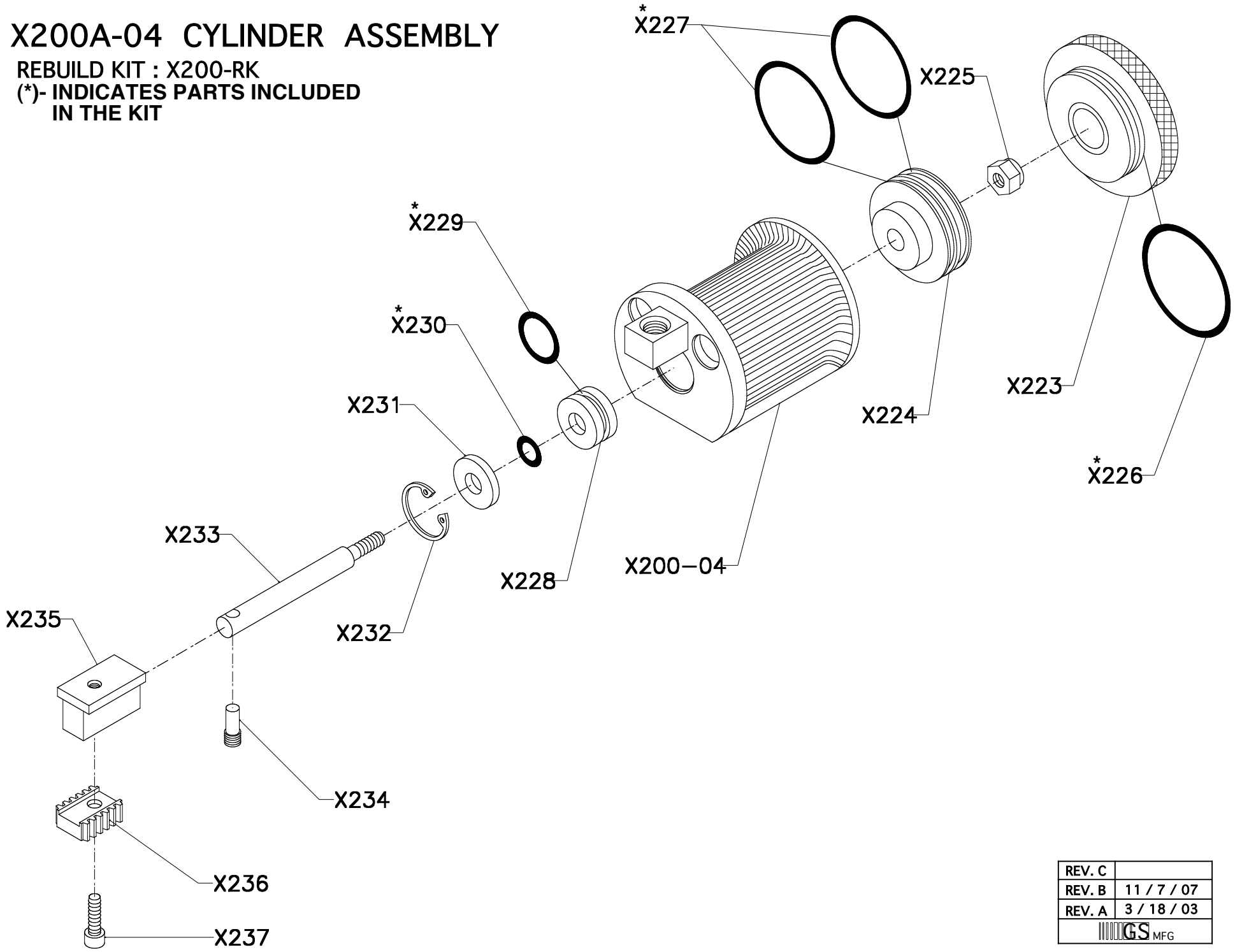


REV. C	8 / 27 / 14
REV. B	6 / 30 / 08
REV. A	2 / 8 / 07
GS MFG	11 / 12 / 04

X200A-04 CYLINDER ASSEMBLY

REBUILD KIT : X200-RK

(*)- INDICATES PARTS INCLUDED IN THE KIT

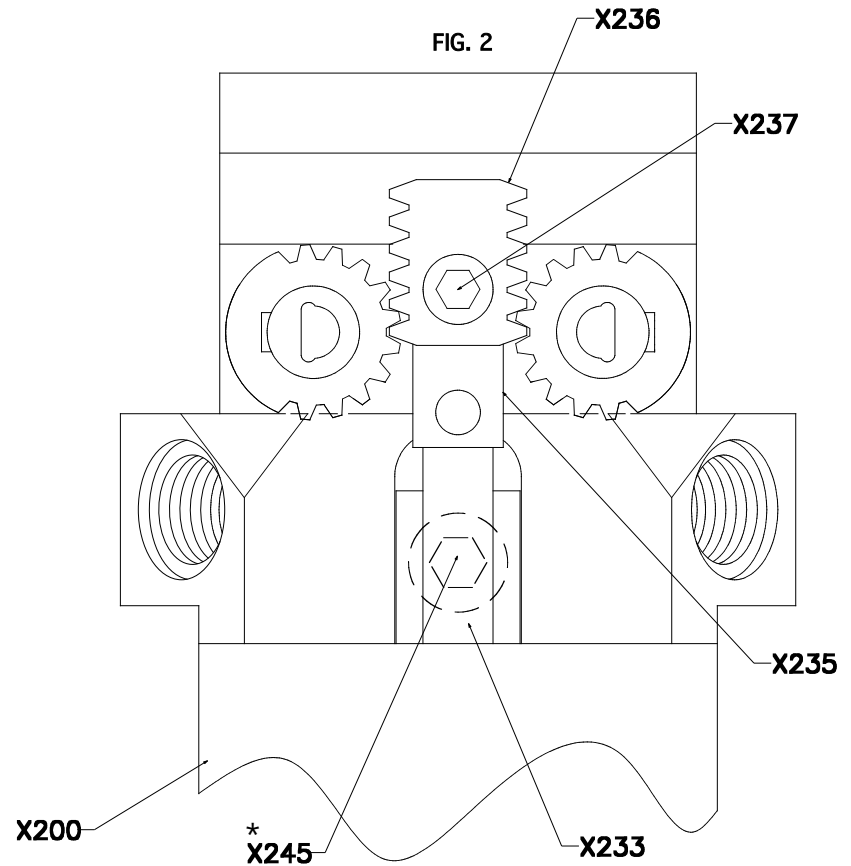
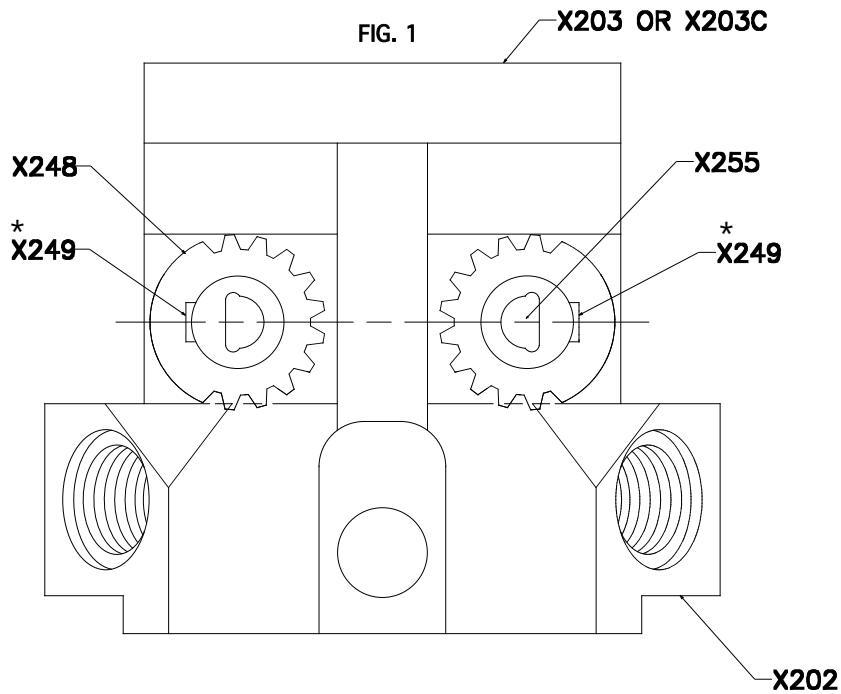


REV. C	
REV. B	11 / 7 / 07
REV. A	3 / 18 / 03
GS MFG	


ALIGNMENT OF X202 FLUID SECTION ASSEMBLY TO X200 CYLINDER ASSEMBLY

1. BE SURE THAT X249(*) SET SCREW IS TIGHTENED TO THE FLAT ON X255 STEM AND FACING OUTWARDS.
2. IF THIS IS DONE CORRECTLY, THE BALLS WILL BE IN THE OFF POSITION. THE TIMING OF THE GEARS IS VERY IMPORTANT SO THAT THE X236 RACK WILL SLIDE INTO POSITION AS SHOWN IN FIG. 2.

3. ATTACH X200 CYLINDER ASSY. TO X202 ASSY. LEAVING THE X245(*) BOLT LOOSE. MAKE SURE X233 SHAFT IS PUSHED ALL THE WAY FORWARD.
4. INSERT X236 RACK ONTO X235 T-NUT ALIGNED WITH X248 GEARS AS SHOWN IN FIG. 2.
5. AFTER X236 RACK IS SEATED ONTO X235 T-NUT TIGHTEN X237(*) AND X245(*) BOLTS.



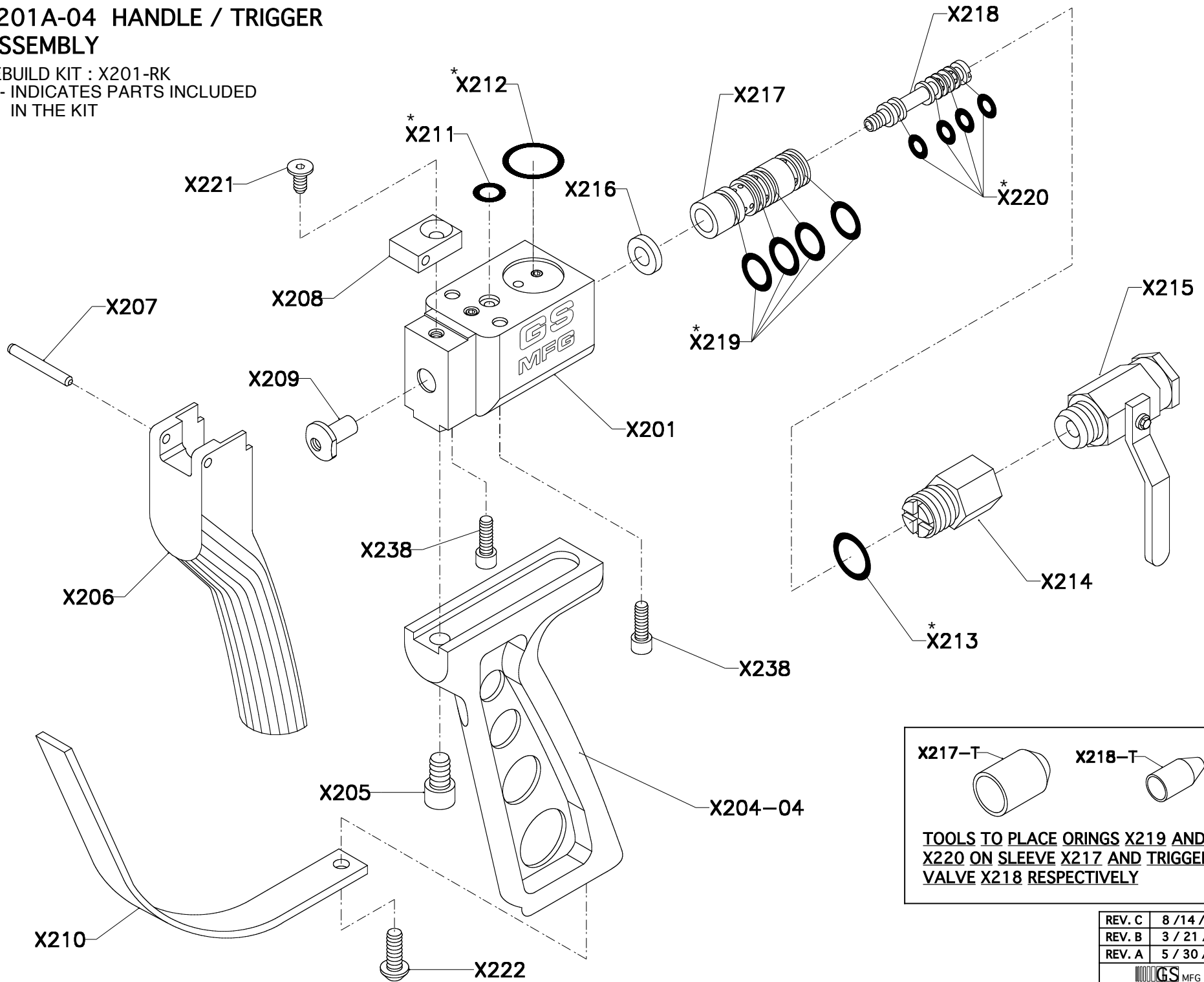
**NOTE; * :USE BLUE LOCTITE 242
ON THE THREADS**

REV. C	
REV. B	7 / 30 / 15
REV. A	2 / 16 / 06
 MFG	12/21/04

X201A-04 HANDLE / TRIGGER ASSEMBLY

REBUILD KIT : X201-RK

(*)- INDICATES PARTS INCLUDED IN THE KIT

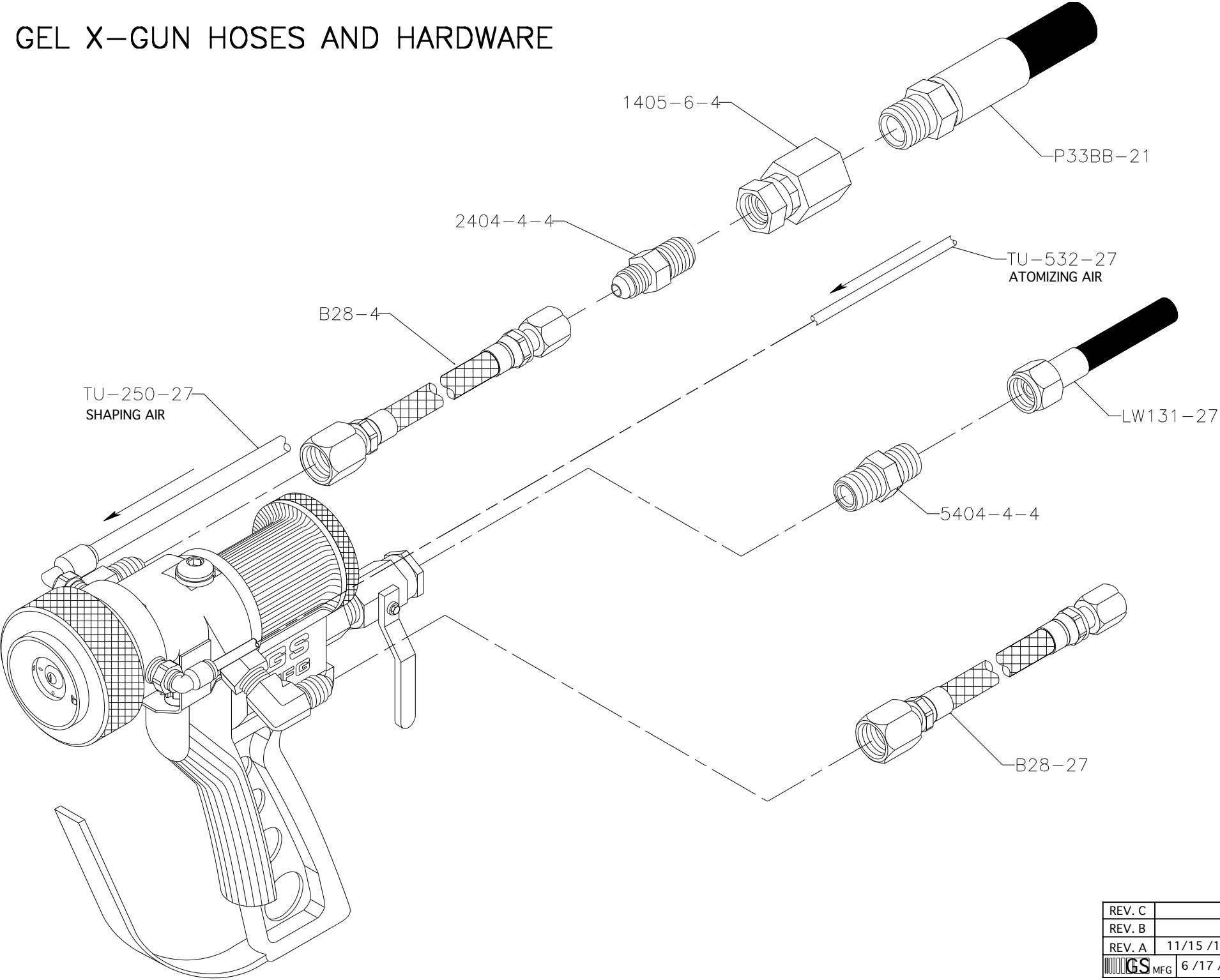



X217-T X218-T

TOOLS TO PLACE ORINGS X219 AND X220 ON SLEEVE X217 AND TRIGGER VALVE X218 RESPECTIVELY

REV. C	8 / 14 / 14
REV. B	3 / 21 / 04
REV. A	5 / 30 / 03

GEL X-GUN HOSES AND HARDWARE



REV. C	
REV. B	
REV. A	11/15 /12
 MFG	6 /17 /09

X301 SPRAY TIP CHART

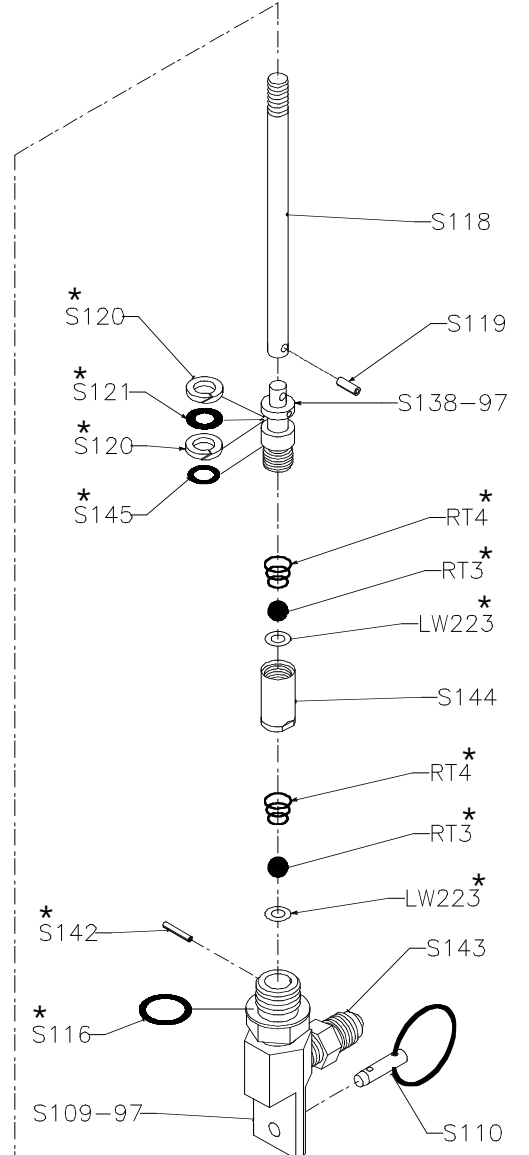
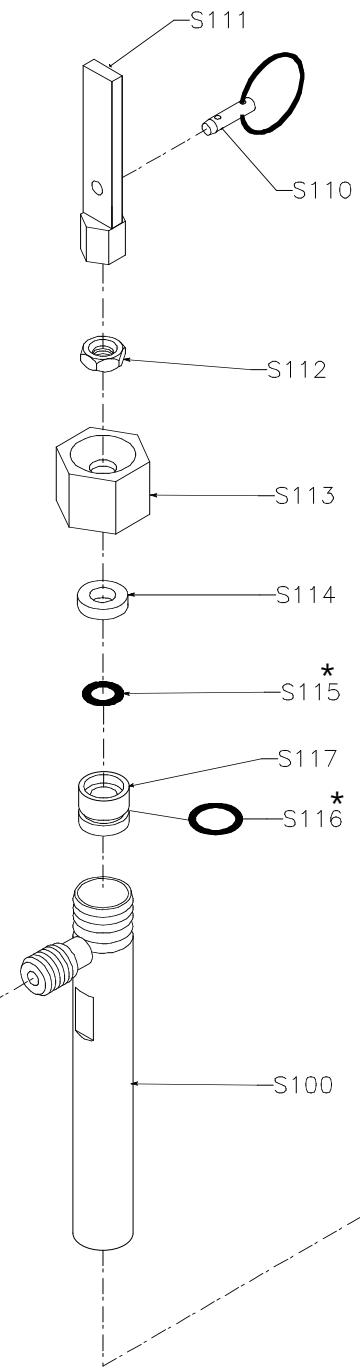
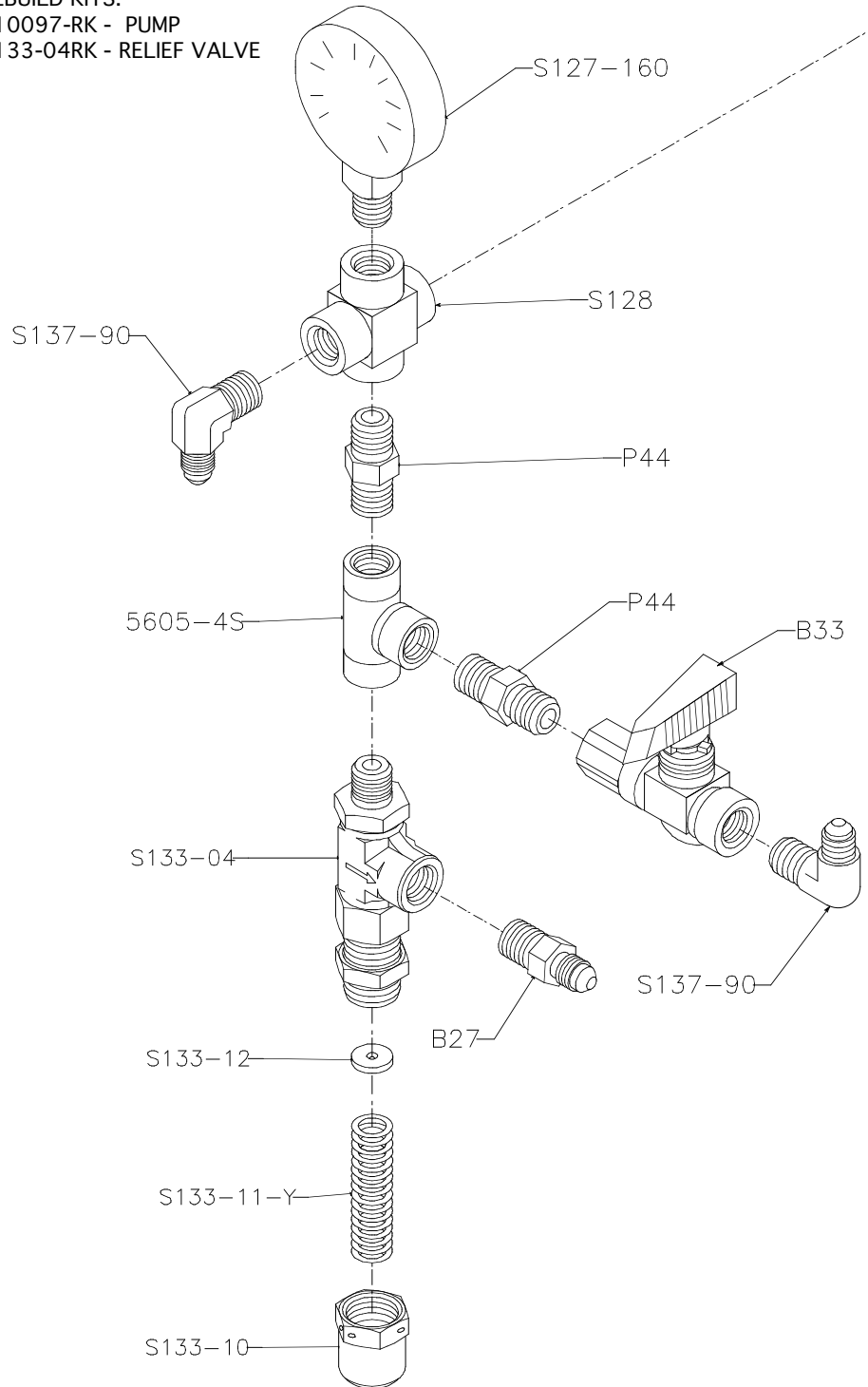
Orifice size inches (mm)	Fan Width at 12" (300 mm) inches (mm)	Part No.	Orifice size	Fan Width at 12" (300 mm)	Part No.	Orifice size	Fan Width at 12" (300 mm)	Part No.	Orifice size	Fan Width at 12" (300 mm)	Part No.			
0.007 (0.178)	2-4 (50-100)	X301-107	0.015 (0.381)	4-6 (100-150)	X301-215	0.021 (0.533)	6-8 (150-200)	X301-321	0.029 (0.737)	12-14 (300-350)	X301-629			
	4-6 (100-150)	X301-207		6-8 (150-200)	X301-315		8-10 (200-250)	X301-421		0.031 (0.787)	8-10 (200-250)	X301-431		
	6-8 (150-200)	X301-307		8-10 (200-250)	X301-415		10-12 (250-300)	X301-521	12-14 (300-350)		X301-631			
0.009 (0.229)	2-4 (50-100)	X301-109		10-12 (250-300)	X301-515		12-14 (300-350)	X301-621	0.033 (0.838)	12-14 (300-350)	X301-633	0.035 (0.889)	8-10 (200-250)	X301-435
	4-6 (100-150)	X301-209		12-14 (300-350)	X301-615		14-16 (350-400)	X301-721		16-18 (400-450)	X301-833		12-14 (300-350)	X301-635
	6-8 (150-200)	X301-309		14-16 (350-400)	X301-715		18-20 (457-508)	X301-921	0.037 (0.940)	14-16 (350-400)	X301-737			
	8-10 (200-250)	X301-409	16-18 (400-450)	X301-815	0.023 (0.584)	8-10 (200-250)	X301-423	0.039 (0.991)		10-12 (250-300)	X301-539			
	10-12 (250-300)	X301-509	4-6 (100-150)	X301-217		10-12 (250-300)	X301-523			12-14 (300-350)	X301-639			
0.011 (0.279)	2-4 (50-100)	X301-111	0.017 (0.432)	6-8 (150-200)	X301-317	0.025 (0.635)	12-14 (300-350)	X301-623	0.027 (0.686)	10-12 (250-300)	X301-527			
	4-6 (100-150)	X301-211		8-10 (200-250)	X301-417		12-14 (300-350)	X301-625		12-14 (300-350)	X301-627			
	6-8 (150-200)	X301-311		10-12 (250-300)	X301-517		14-16 (350-400)	X301-723			16-18 (400-450)	X301-825		
	8-10 (200-250)	X301-411		12-14 (300-350)	X301-617		16-18 (400-450)	X301-817	18-20 (457-508)	X301-925				
	10-12 (250-300)	X301-511		14-16 (350-400)	X301-717		0.019 (0.483)	4-6 (100-150)	X301-219	0.019 (0.483)	4-6 (100-150)	X301-219		
	12-14 (300-350)	X301-611		16-18 (400-450)	X301-817			6-8 (150-200)	X301-319		6-8 (150-200)	X301-319		
	0.013 (0.330)	4-6 (100-150)		X301-213	18-20 (457-508)		X301-917	8-10 (200-250)	X301-419		8-10 (200-250)	X301-419		
6-8 (150-200)		X301-313	0.019 (0.483)	4-6 (100-150)	X301-219	10-12 (250-300)	X301-519	10-12 (250-300)	X301-519					
8-10 (200-250)		X301-413		6-8 (150-200)	X301-319	12-14 (300-350)	X301-619	12-14 (300-350)	X301-619					
10-12 (250-300)		X301-513		8-10 (200-250)	X301-419	14-16 (350-400)	X301-719	14-16 (350-400)	X301-719					
12-14 (300-350)		X301-613		10-12 (250-300)	X301-519	16-18 (400-450)	X301-819	16-18 (400-450)	X301-819					
14-16 (350-400)		X301-713		12-14 (300-350)	X301-619	18-20 (457-508)	X301-919	18-20 (457-508)	X301-919					


S1000-160-04

REBUILD KITS:

*S10097-RK - PUMP

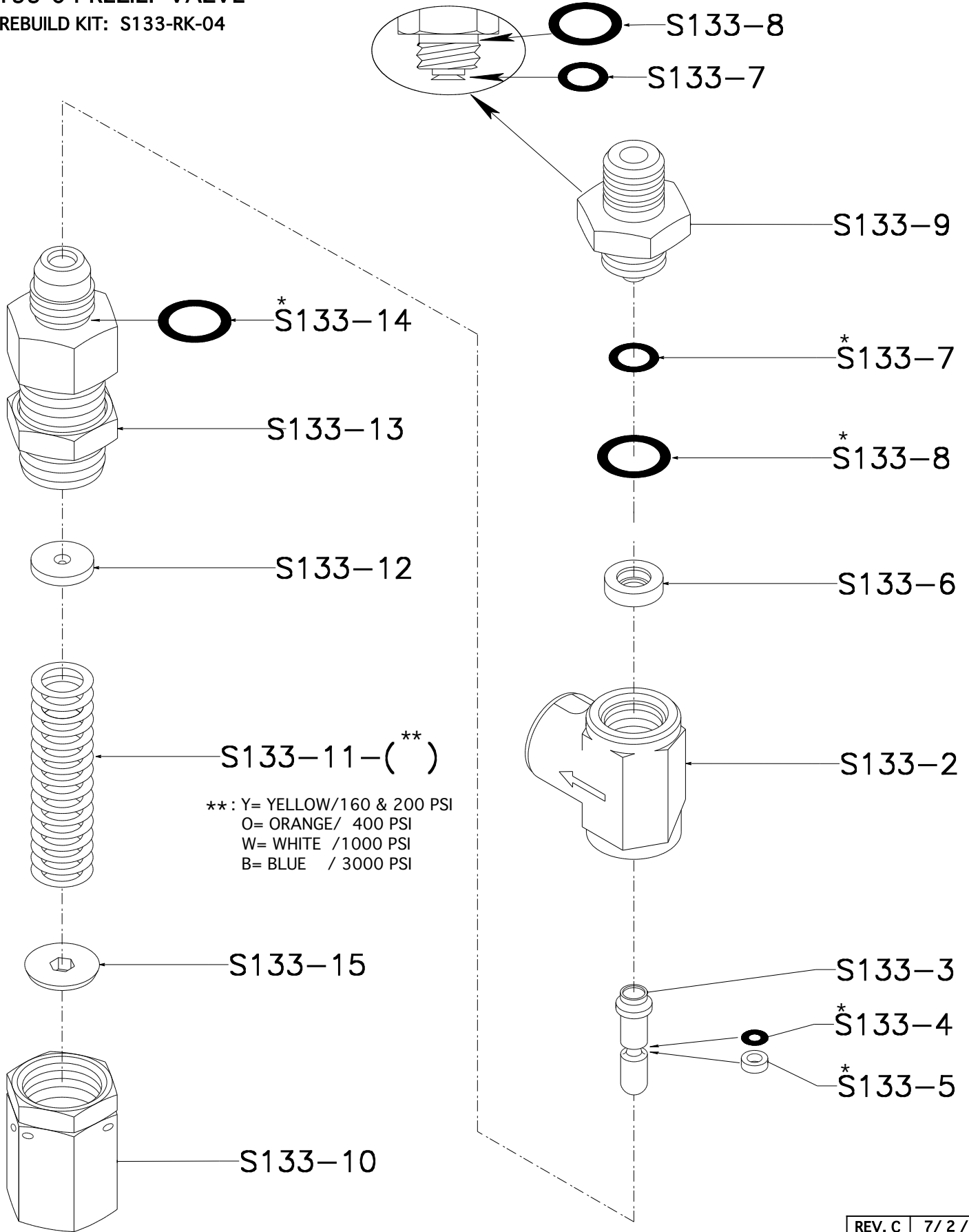
S133-04RK - RELIEF VALVE



REV. C	10 / 20 / 09
REV. B	9 / 24 / 08
REV. A	2 / 6 / 07
 MFG	8 / 3 / 04

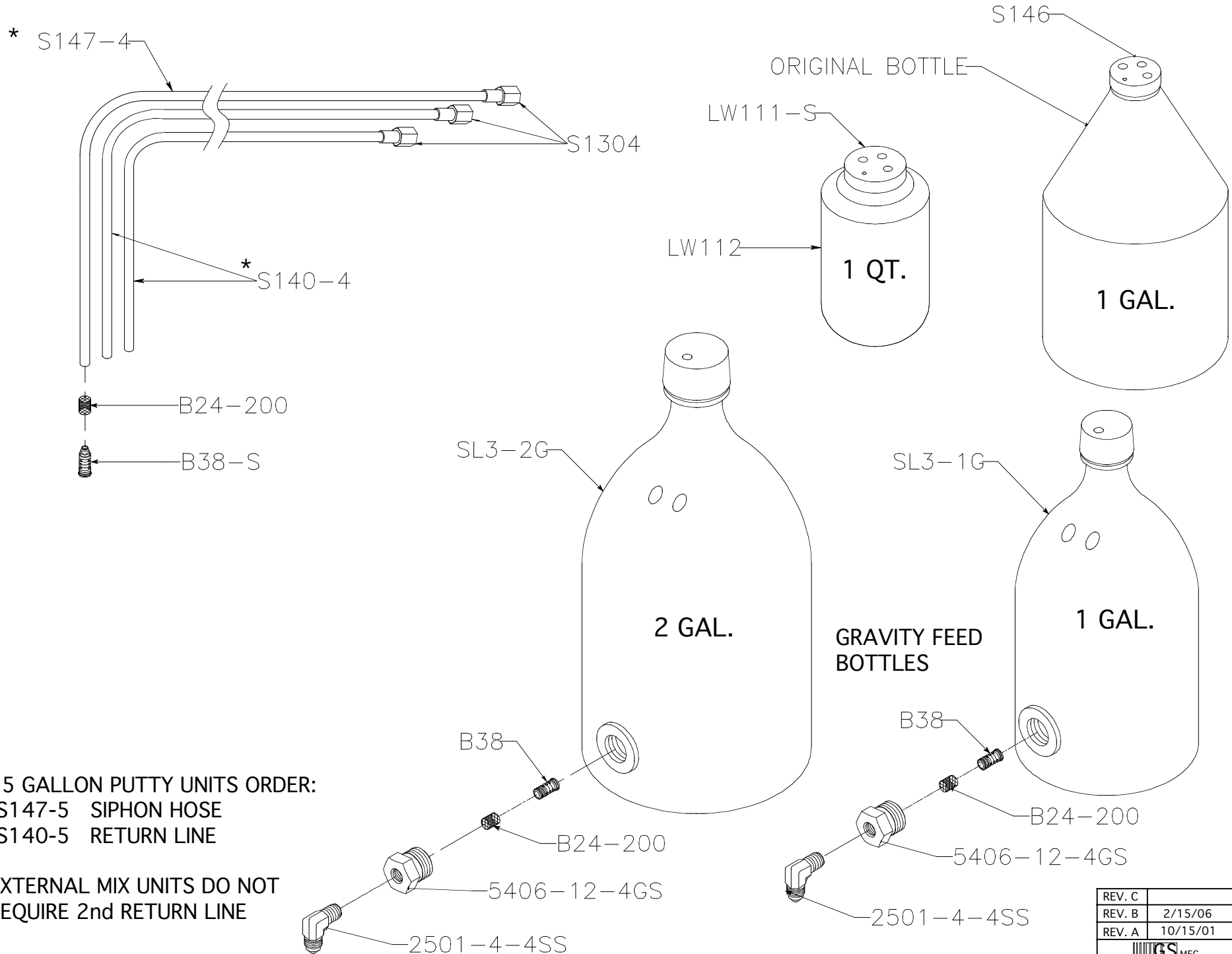
S133-04 RELIEF VALVE

* REBUILD KIT: S133-RK-04



REV. C	7/ 2 / 09
REV. B	10/8/ 08
REV. A	5/ 5 / 08
GS MFG	8 / 3 / 04

MEKP SIPHON HOSES / BOTTLES

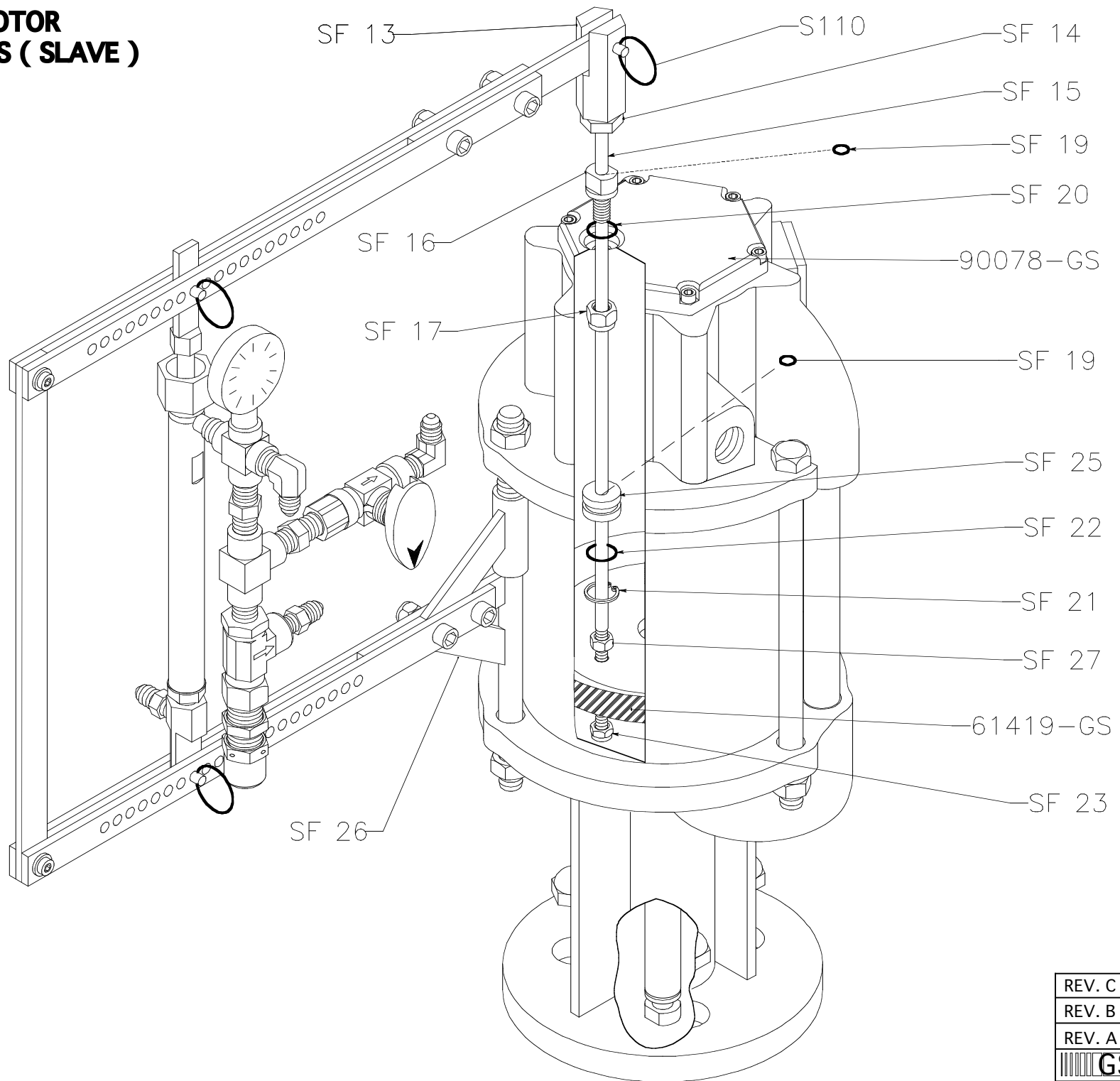



*. 55 GALLON PUTTY UNITS ORDER:
 -S147-5 SIPHON HOSE
 -S140-5 RETURN LINE

EXTERNAL MIX UNITS DO NOT
 REQUIRE 2nd RETURN LINE

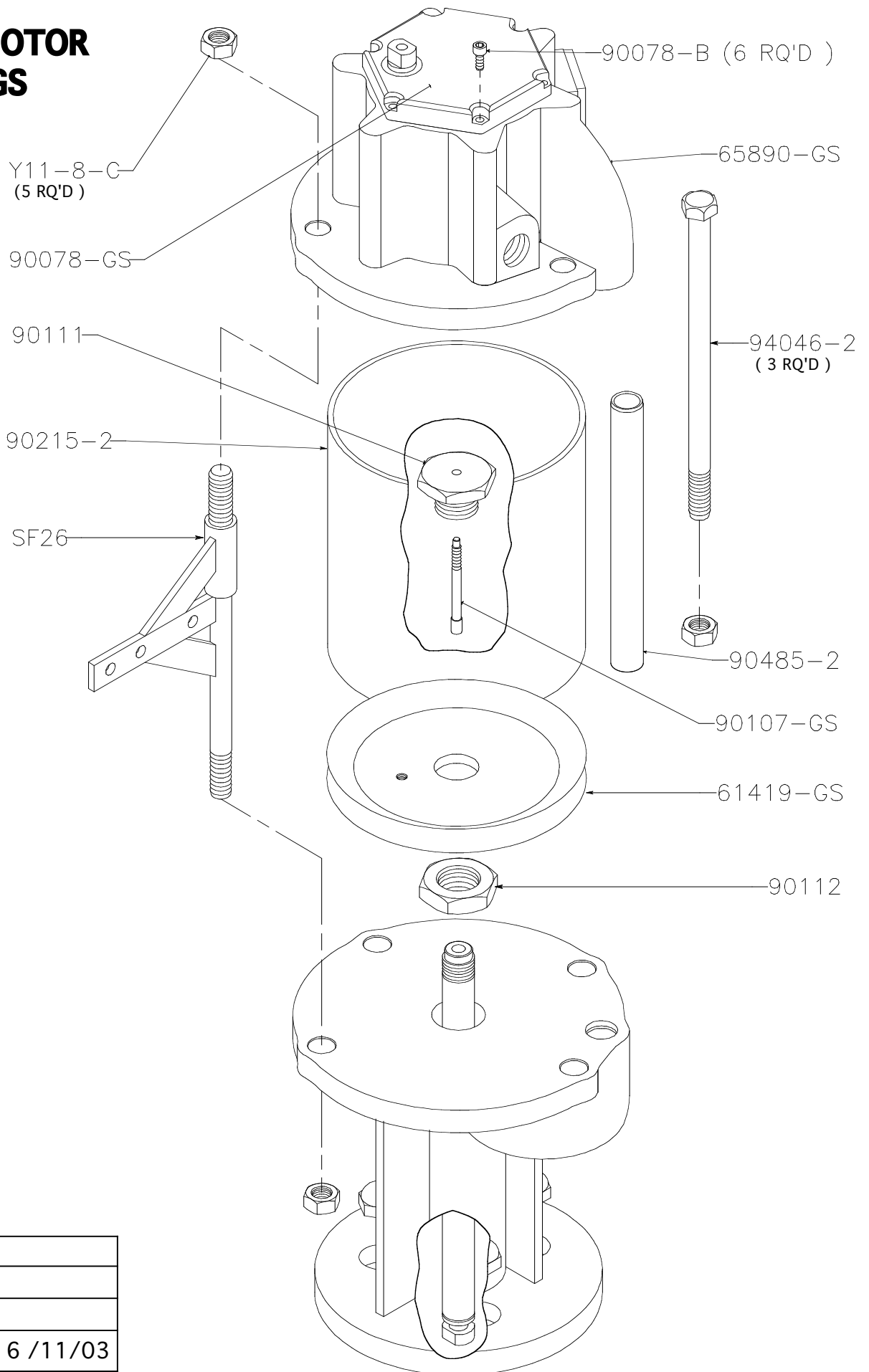
REV. C	
REV. B	2/15/06
REV. A	10/15/01


**6" AIR MOTOR
65665-GS (SLAVE)**



REV. C	
REV. B	7 /16 /09
REV. A	12 /13/05
 GS MFG	6 /24/03

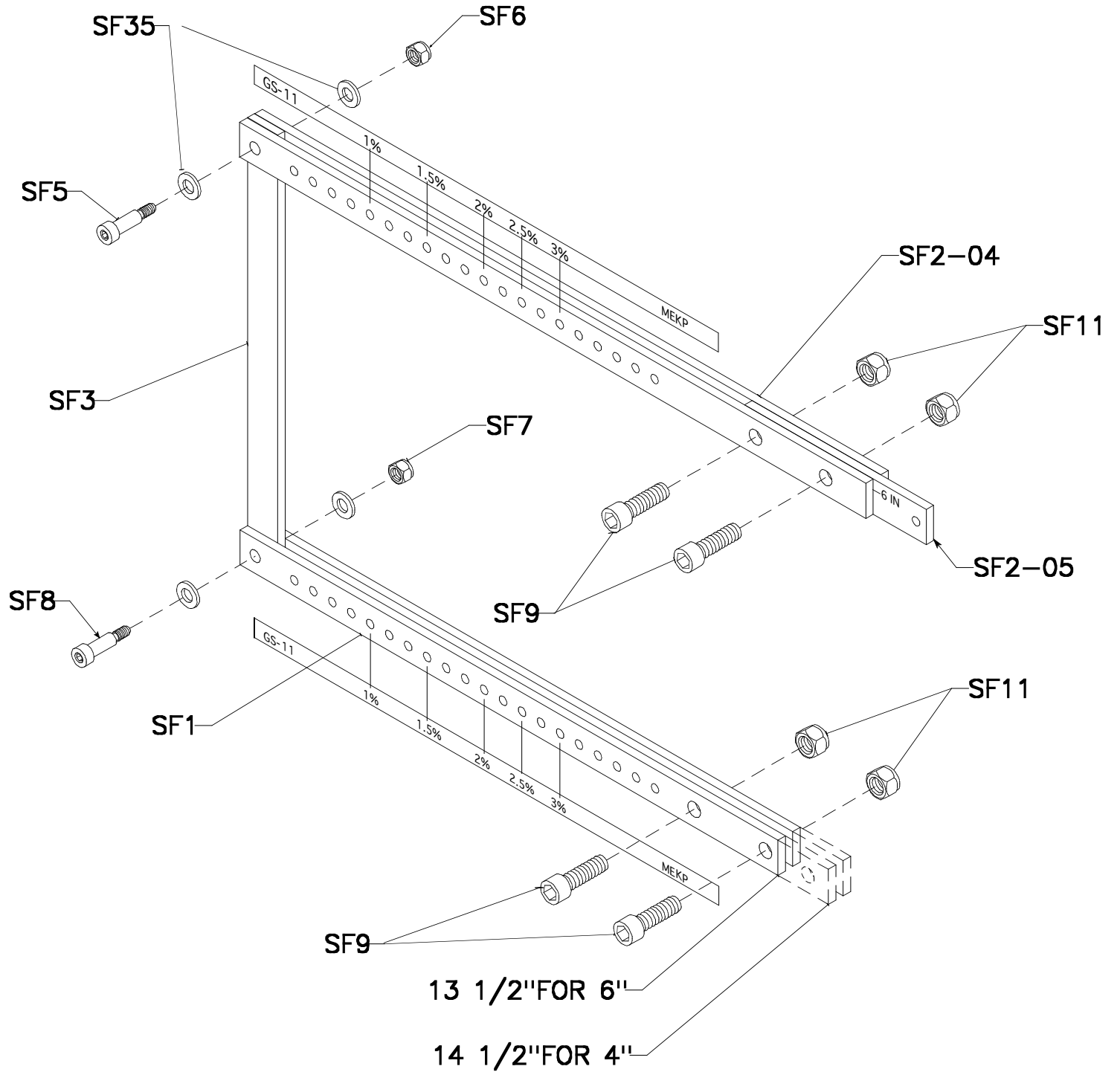
6" AIR MOTOR 65665-GS



REV. C	
REV. B	
REV. A	
 MFG	6 / 11 / 03

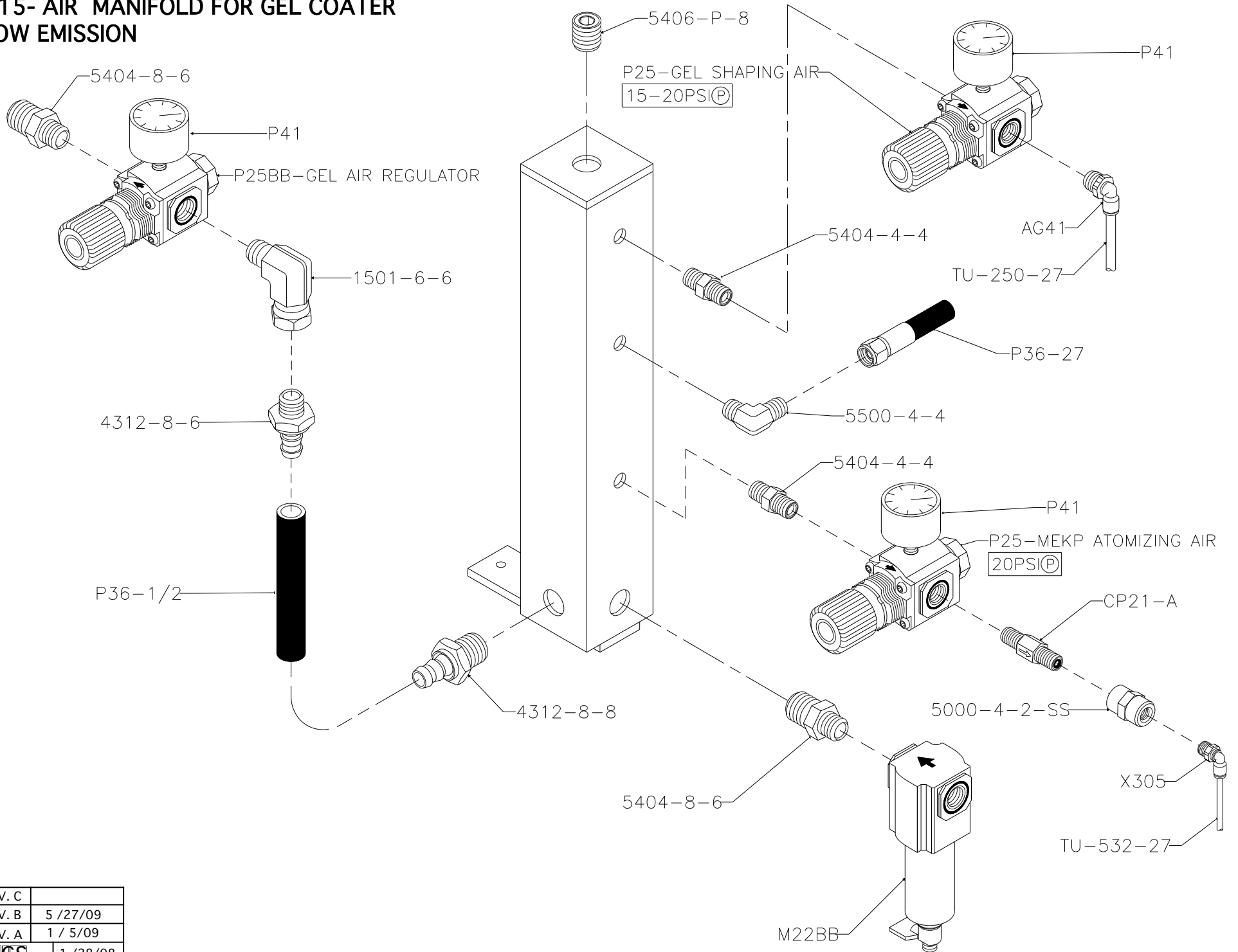
S200-SLAVE ARM ASSEMBLY


11:1 / 4" AIR MOTOR
 22:1 / 6" AIR MOTOR



REV. C	11/26/12
REV. B	3 /9/06
REV. A	5 /20/03

M15- AIR MANIFOLD FOR GEL COATER LOW EMISSION



REV. C	
REV. B	5 / 27 / 09
REV. A	1 / 5 / 09
 MFG	1 / 28 / 08

RESIN / GELCOAT

11:1

22:1

65465-GS

65665-GS

Y85-29-C

90102

90109

90096

90102

90163-4

90531-GS

90102


90109

90109

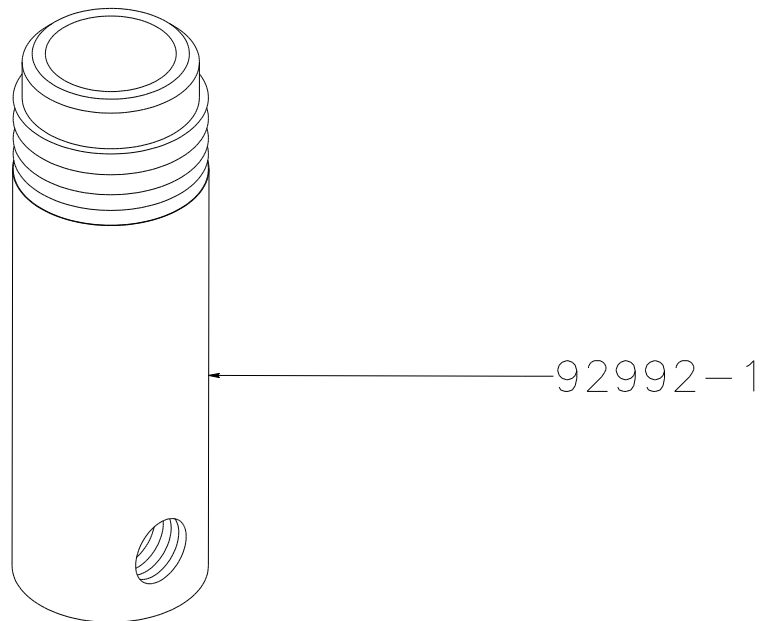
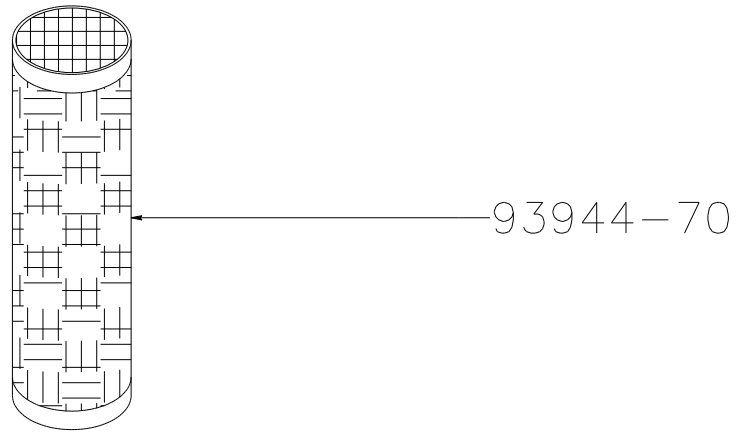
90096


90096

66300R43

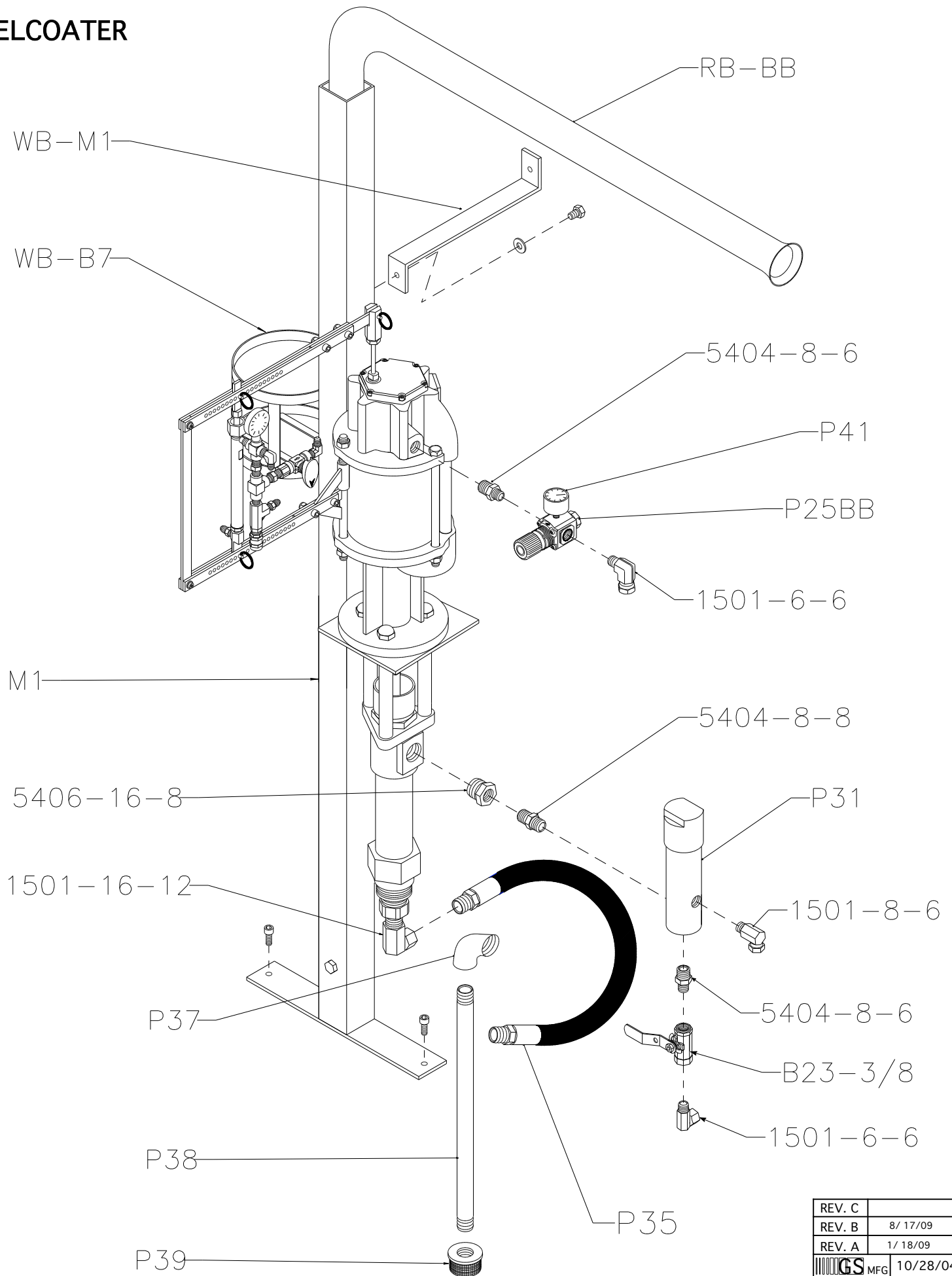
REV. C	
REV. B	
REV. A	8 / 4 / 09
 GS MFG	11 / 14 / 97

P31 MATERIAL FILTER



REV. C	
REV. B	7/23/13
REV. A	6/27/00
 GS MFG	7 /31/97

GELCOATER



REV. C	
REV. B	8/17/09
REV. A	1/18/09
GS MFG	10/28/04

