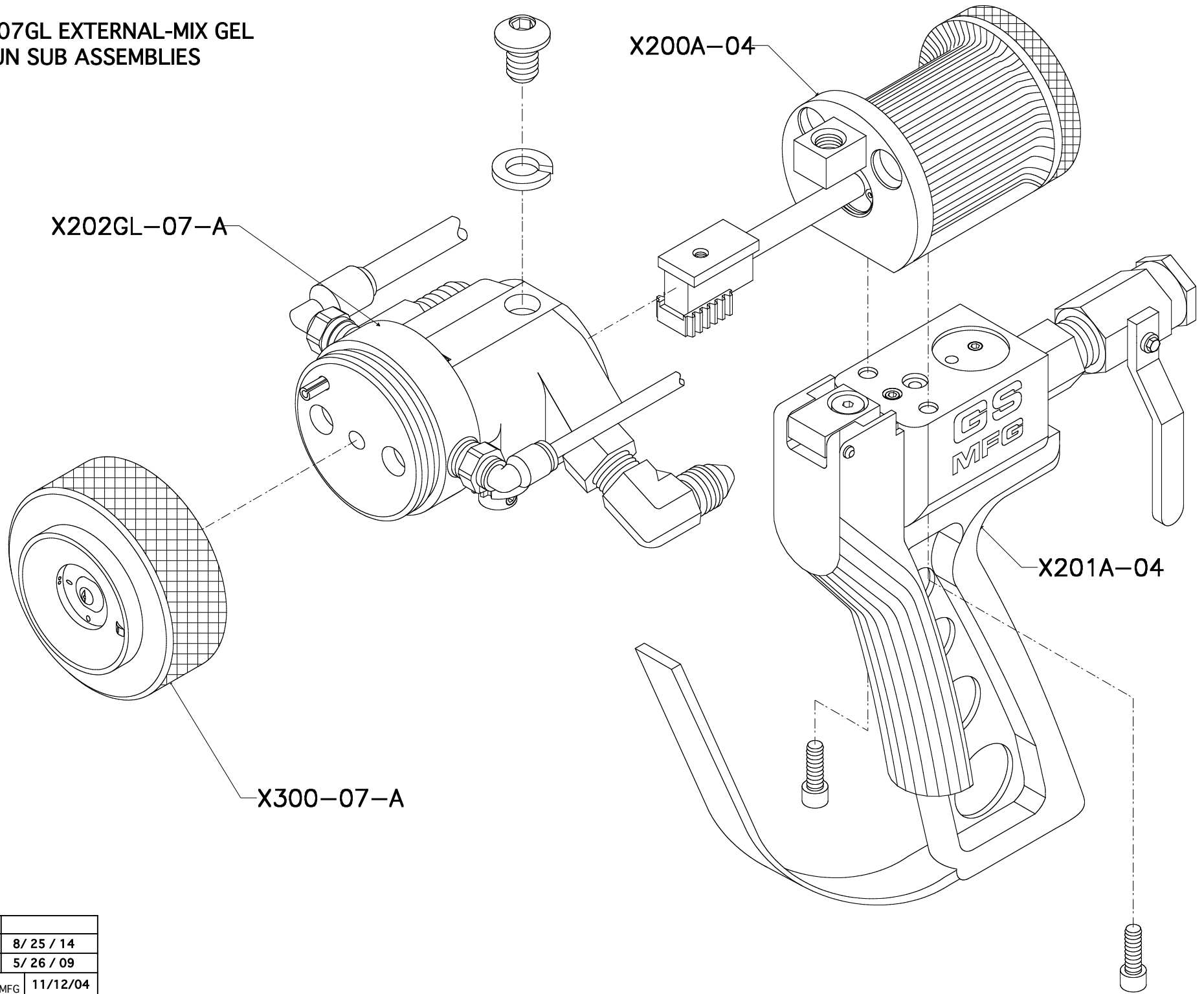



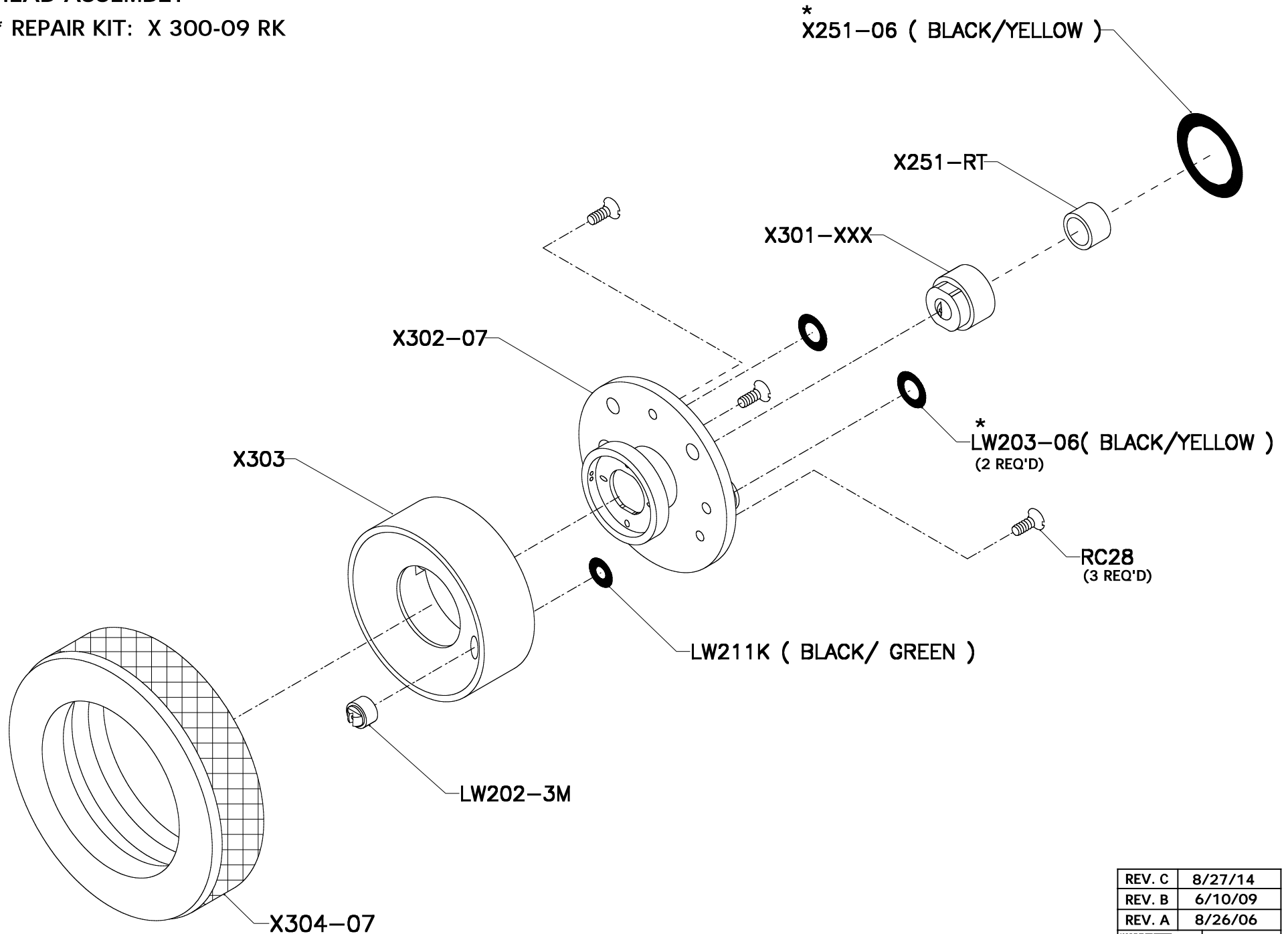
X2007GL EXTERNAL-MIX GEL
X-GUN SUB ASSEMBLIES




REV. C	
REV. B	8/ 25 / 14
REV. A	5/ 26 / 09
 GS MFG	11/12/04

**X300-09A GEL FLUID
HEAD ASSEMBLY**

*** REPAIR KIT: X 300-09 RK**



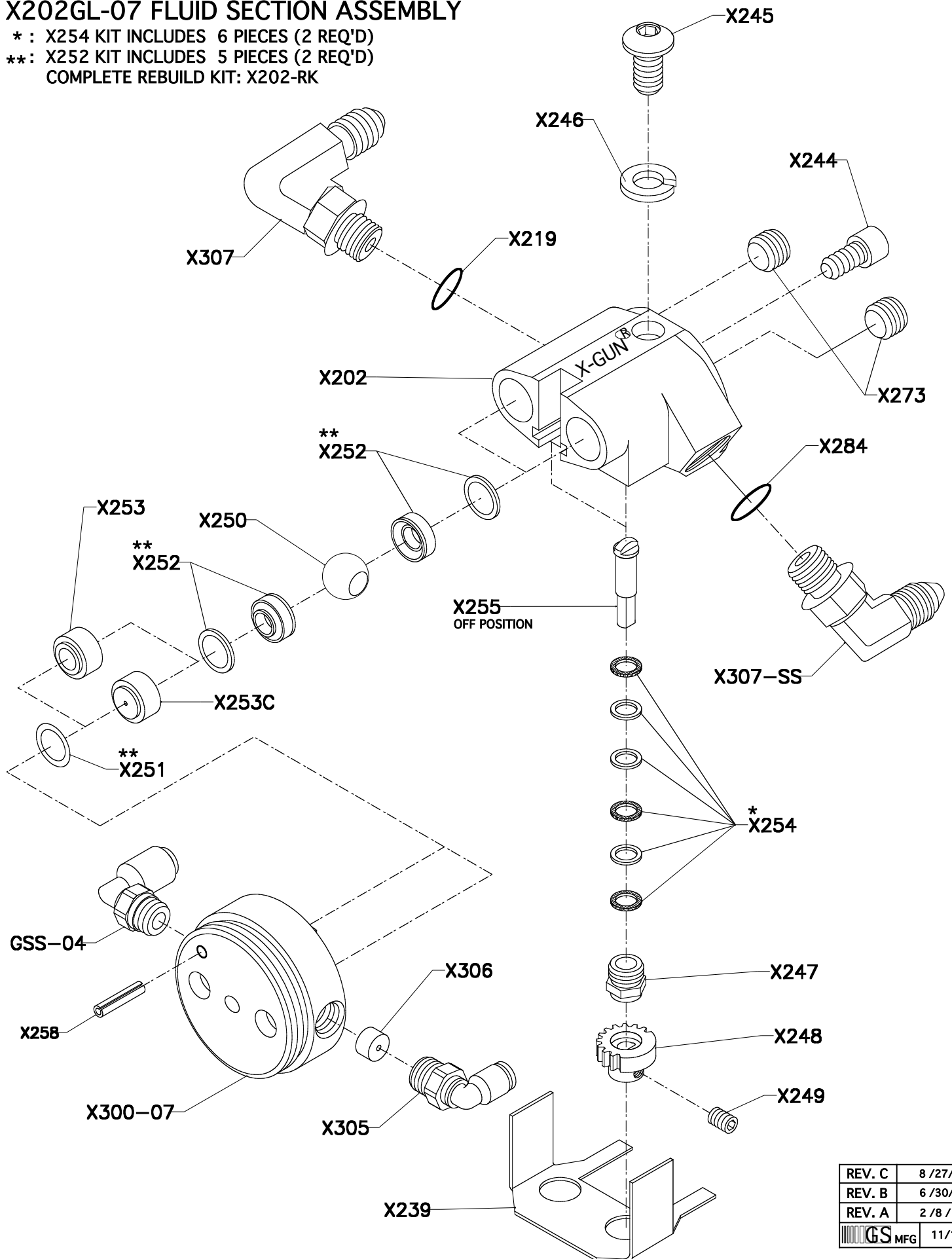
REV. C	8/27/14
REV. B	6/10/09
REV. A	8/26/06
 MFG	11/1/04

X202GL-07 FLUID SECTION ASSEMBLY

* : X254 KIT INCLUDES 6 PIECES (2 REQ'D)

** : X252 KIT INCLUDES 5 PIECES (2 REQ'D)

COMPLETE REBUILD KIT: X202-RK

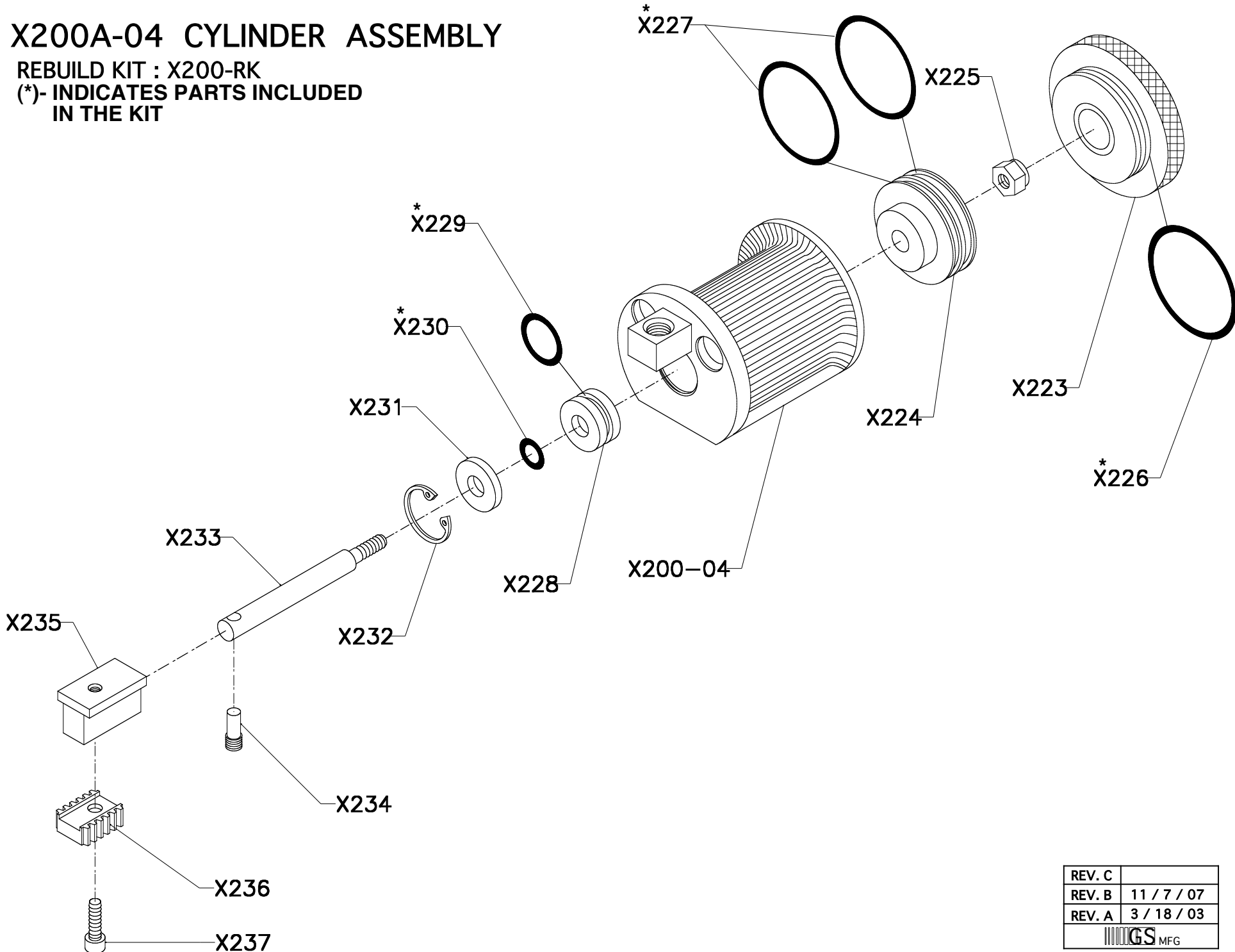


REV. C	8 / 27 / 14
REV. B	6 / 30 / 08
REV. A	2 / 8 / 07
GS MFG	11 / 12 / 04

X200A-04 CYLINDER ASSEMBLY

REBUILD KIT : X200-RK

(*)- INDICATES PARTS INCLUDED
IN THE KIT

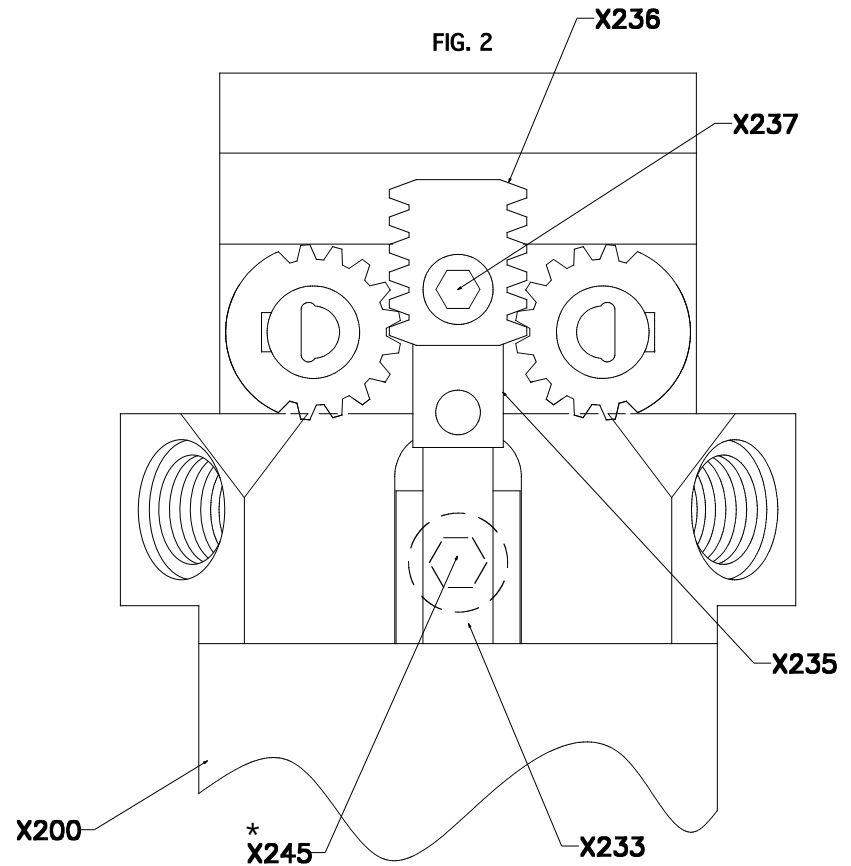
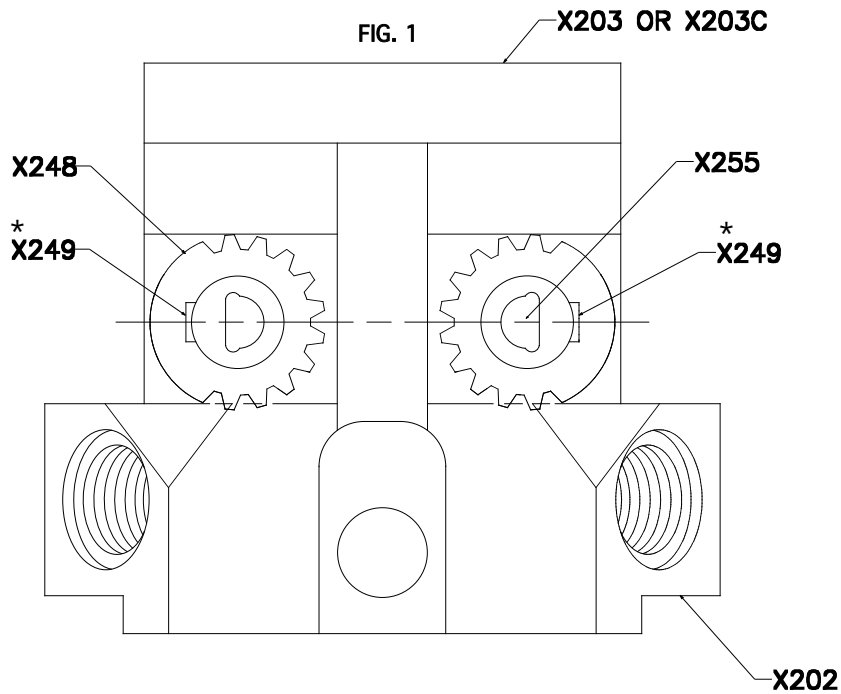


REV. C	
REV. B	11 / 7 / 07
REV. A	3 / 18 / 03
GS MFG	


ALIGNMENT OF X202 FLUID SECTION ASSEMBLY TO X200 CYLINDER ASSEMBLY

1. BE SURE THAT X249(*) SET SCREW IS TIGHTENED TO THE FLAT ON X255 STEM AND FACING OUTWARDS.
2. IF THIS IS DONE CORRECTLY, THE BALLS WILL BE IN THE OFF POSITION. THE TIMING OF THE GEARS IS VERY IMPORTANT SO THAT THE X236 RACK WILL SLIDE INTO POSITION AS SHOWN IN FIG. 2.

3. ATTACH X200 CYLINDER ASSY. TO X202 ASSY. LEAVING THE X245(*) BOLT LOOSE. MAKE SURE X233 SHAFT IS PUSHED ALL THE WAY FORWARD.
4. INSERT X236 RACK ONTO X235 T-NUT ALIGNED WITH X248 GEARS AS SHOWN IN FIG. 2.
5. AFTER X236 RACK IS SEATED ONTO X235 T-NUT TIGHTEN X237(*) AND X245(*) BOLTS.



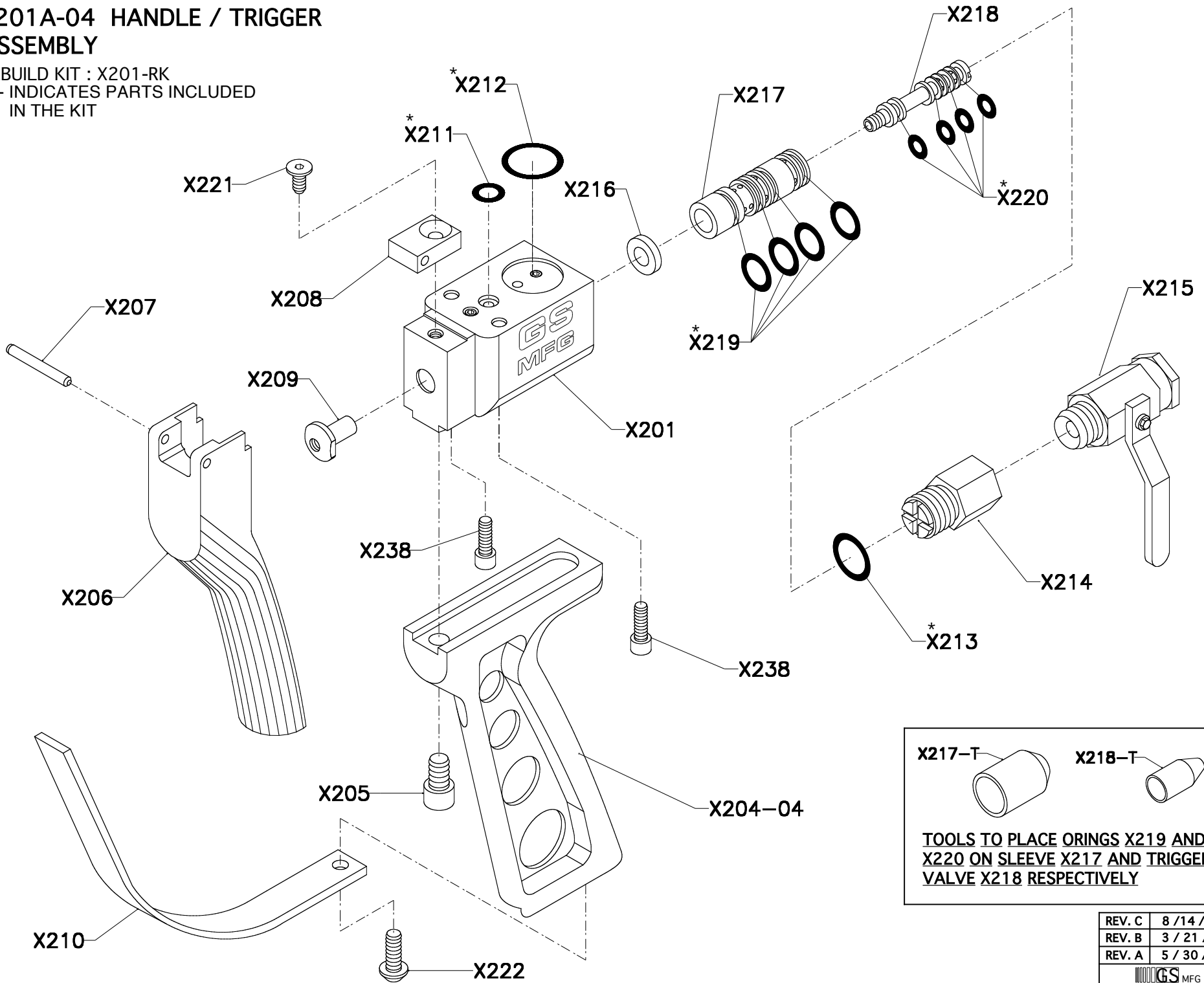
**NOTE; * :USE BLUE LOCTITE 242
ON THE THREADS**

REV. C	
REV. B	7 / 30 / 15
REV. A	2 / 16 / 06
 MFG	12/21/04

X201A-04 HANDLE / TRIGGER ASSEMBLY

REBUILD KIT : X201-RK

(*)- INDICATES PARTS INCLUDED IN THE KIT

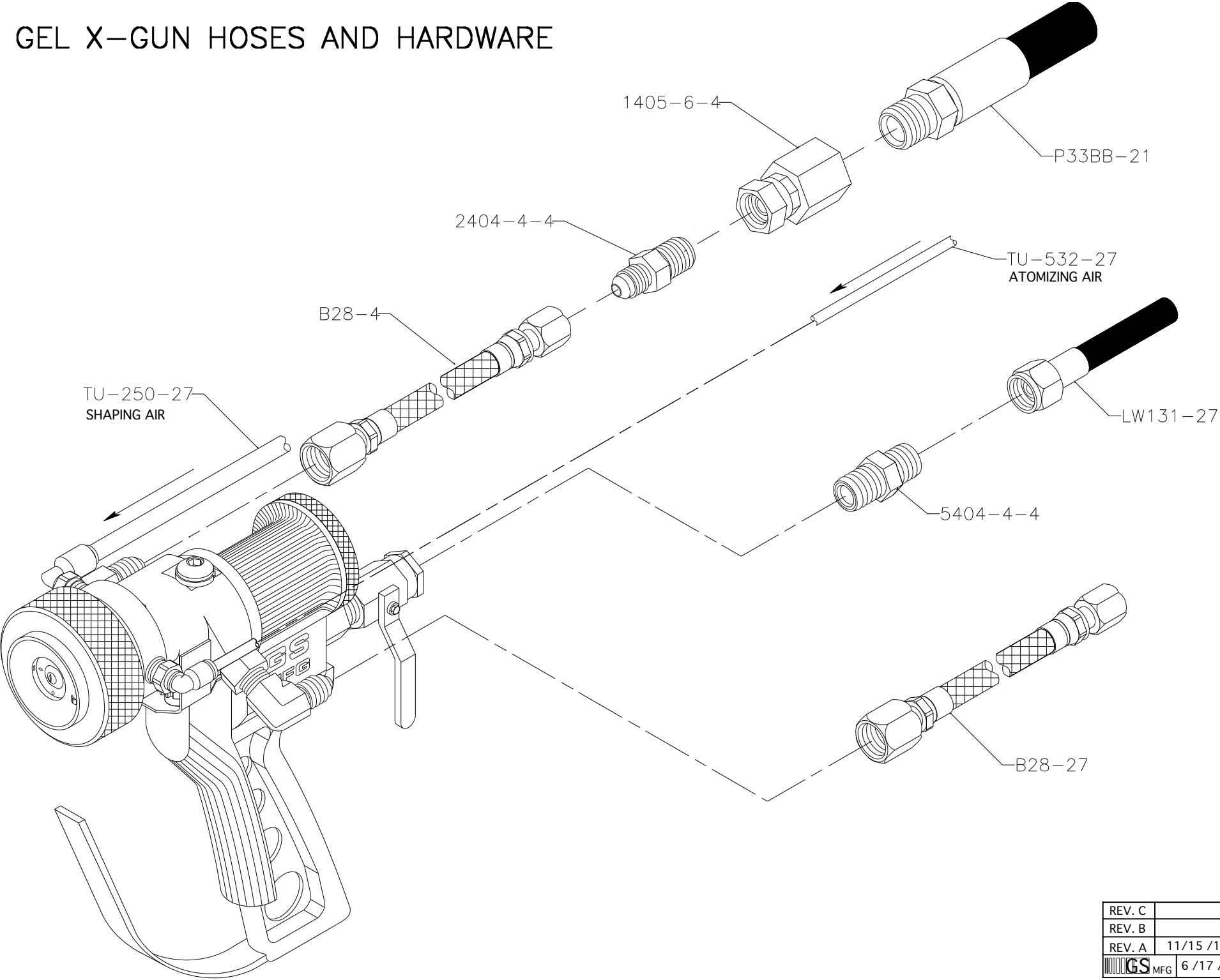



X217-T X218-T

TOOLS TO PLACE ORINGS X219 AND X220 ON SLEEVE X217 AND TRIGGER VALVE X218 RESPECTIVELY

REV. C	8 / 14 / 14
REV. B	3 / 21 / 04
REV. A	5 / 30 / 03

GEL X-GUN HOSES AND HARDWARE



REV. C	
REV. B	
REV. A	11/15 /12
 MFG	6 /17 /09

GS MANUFACTURING

X301 SPRAY TIP CHART

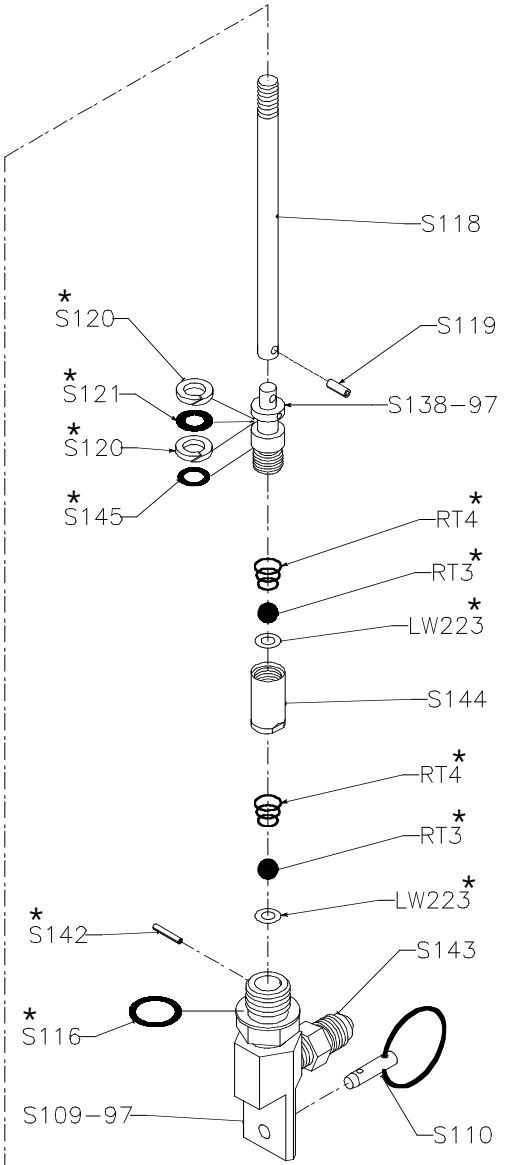
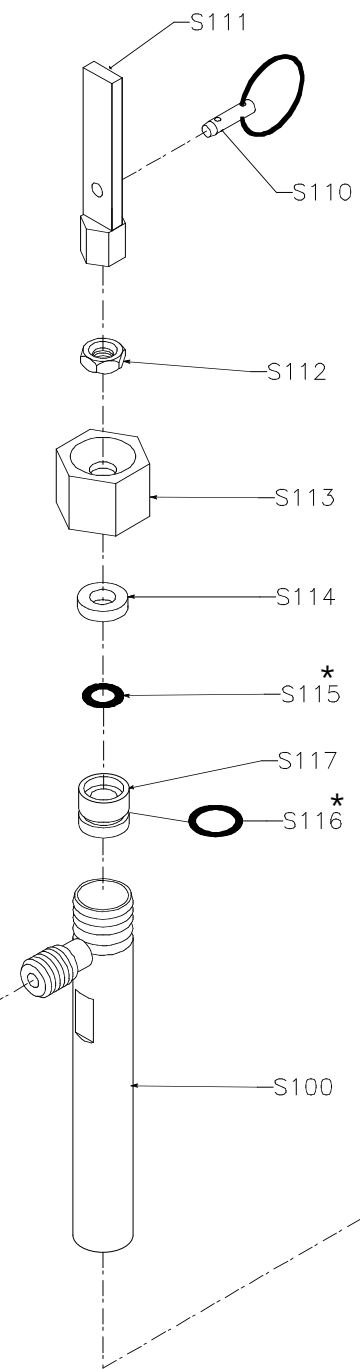
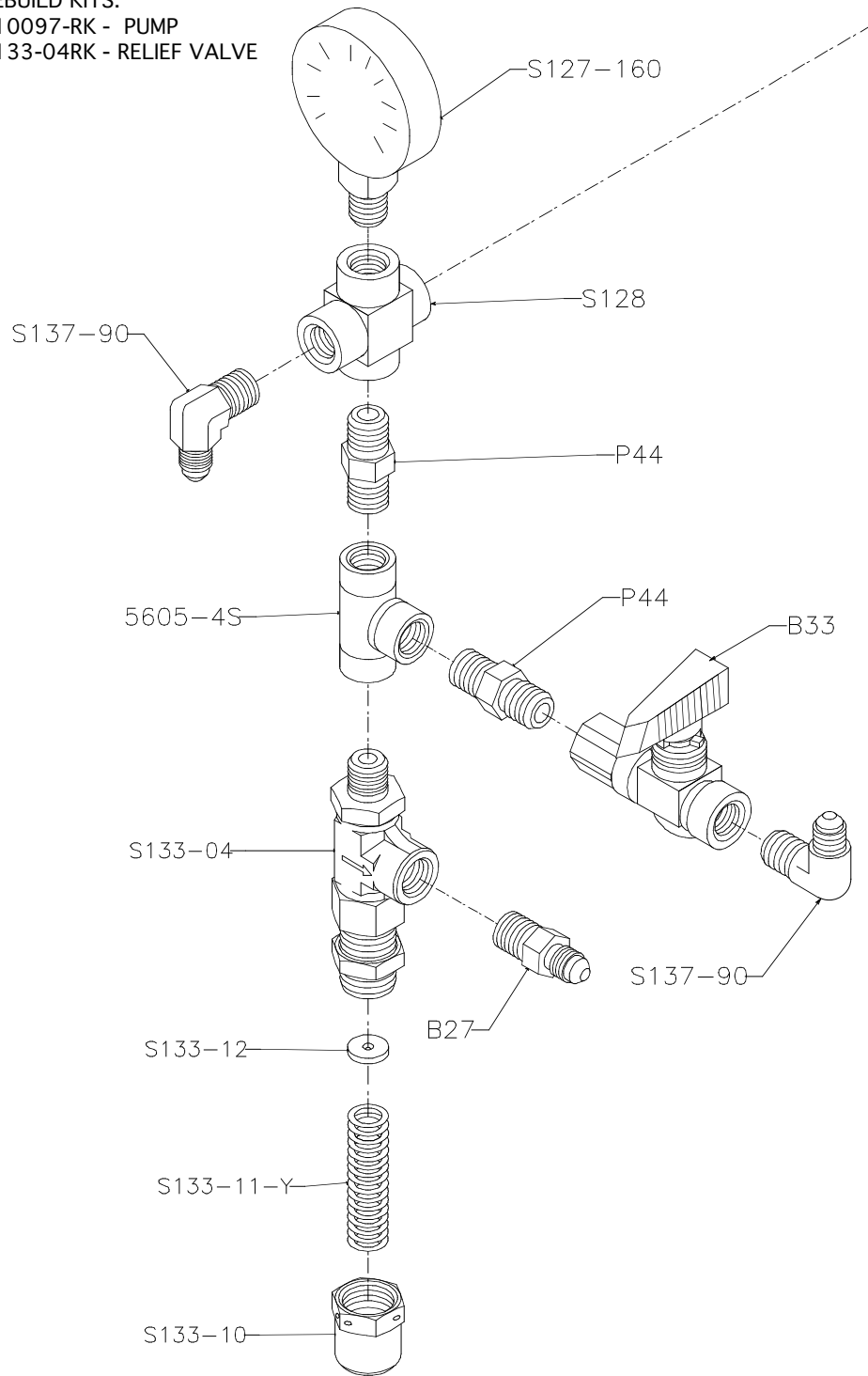
Orifice size inches (mm)	Fan Width at 12" (300 mm) inches (mm)	Part No.	Orifice size	Fan Width at 12" (300 mm)	Part No.	Orifice size	Fan Width at 12" (300 mm)	Part No.	Orifice size	Fan Width at 12" (300 mm)	Part No.
0.007 (0.178)	2-4 (50-100)	X301-107	0.015 (0.381)	4-6 (100-150)	X301-215	0.021 (0.533)	6-8 (150-200)	X301-321	0.029 (0.737)	12-14 (300-350)	X301-629
	4-6 (100-150)	X301-207		6-8 (150-200)	X301-315		8-10 (200-250)	X301-421		0.031 (0.787)	8-10 (200-250)
	6-8 (150-200)	X301-307		8-10 (200-250)	X301-415		10-12 (250-300)	X301-521	12-14 (300-350)		X301-631
0.009 (0.229)	2-4 (50-100)	X301-109		10-12 (250-300)	X301-515		12-14 (300-350)	X301-621	0.033 (0.838)	12-14 (300-350)	X301-633
	4-6 (100-150)	X301-209		12-14 (300-350)	X301-615		14-16 (350-400)	X301-721		16-18 (400-450)	X301-833
	6-8 (150-200)	X301-309	14-16 (350-400)	X301-715	18-20 (457-508)	X301-921	0.035 (0.889)	8-10 (200-250)	X301-435		
	8-10 (200-250)	X301-409	16-18 (400-450)	X301-815	0.023 (0.584)	8-10 (200-250)		X301-423	12-14 (300-350)	X301-635	
	10-12 (250-300)	X301-509	0.017 (0.432)	4-6 (100-150)		X301-217	10-12 (250-300)	X301-523	0.037 (0.940)	14-16 (350-400)	X301-737
0.011 (0.279)	2-4 (50-100)	X301-111		6-8 (150-200)	X301-317	12-14 (300-350)	X301-623	0.039 (0.991)		10-12 (250-300)	X301-539
	4-6 (100-150)	X301-211		8-10 (200-250)	X301-417	14-16 (350-400)	X301-723			12-14 (300-350)	X301-639
	6-8 (150-200)	X301-311		10-12 (250-300)	X301-517	18-20 (457-508)	X301-923		16-18 (400-450)	X301-839	
	8-10 (200-250)	X301-411		0.019 (0.483)	12-14 (300-350)	X301-617	0.025 (0.635)	8-10 (200-250)	X301-425		
	10-12 (250-300)	X301-511	14-16 (350-400)		X301-717	12-14 (300-350)		X301-625			
	12-14 (300-350)	X301-611	16-18 (400-450)		X301-817	14-16 (350-400)		X301-725			
0.013 (0.330)	4-6 (100-150)	X301-213	18-20 (457-508)		X301-917	16-18 (400-450)		X301-825			
	6-8 (150-200)	X301-313	0.027 (0.686)		4-6 (100-150)	X301-219		18-20 (457-508)	X301-925		
	8-10 (200-250)	X301-413		6-8 (150-200)	X301-319	10-12 (250-300)	X301-527				
	10-12 (250-300)	X301-513		8-10 (200-250)	X301-419	12-14 (300-350)	X301-627				
	12-14 (300-350)	X301-613		10-12 (250-300)	X301-519	16-18 (400-450)	X301-827				
	14-16 (350-400)	X301-713		12-14 (300-350)	X301-619						
				14-16 (350-400)	X301-719						
		16-18 (400-450)		X301-819							
		18-20 (457-508)	X301-919								


S1000-160-04

REBUILD KITS:

*S10097-RK - PUMP

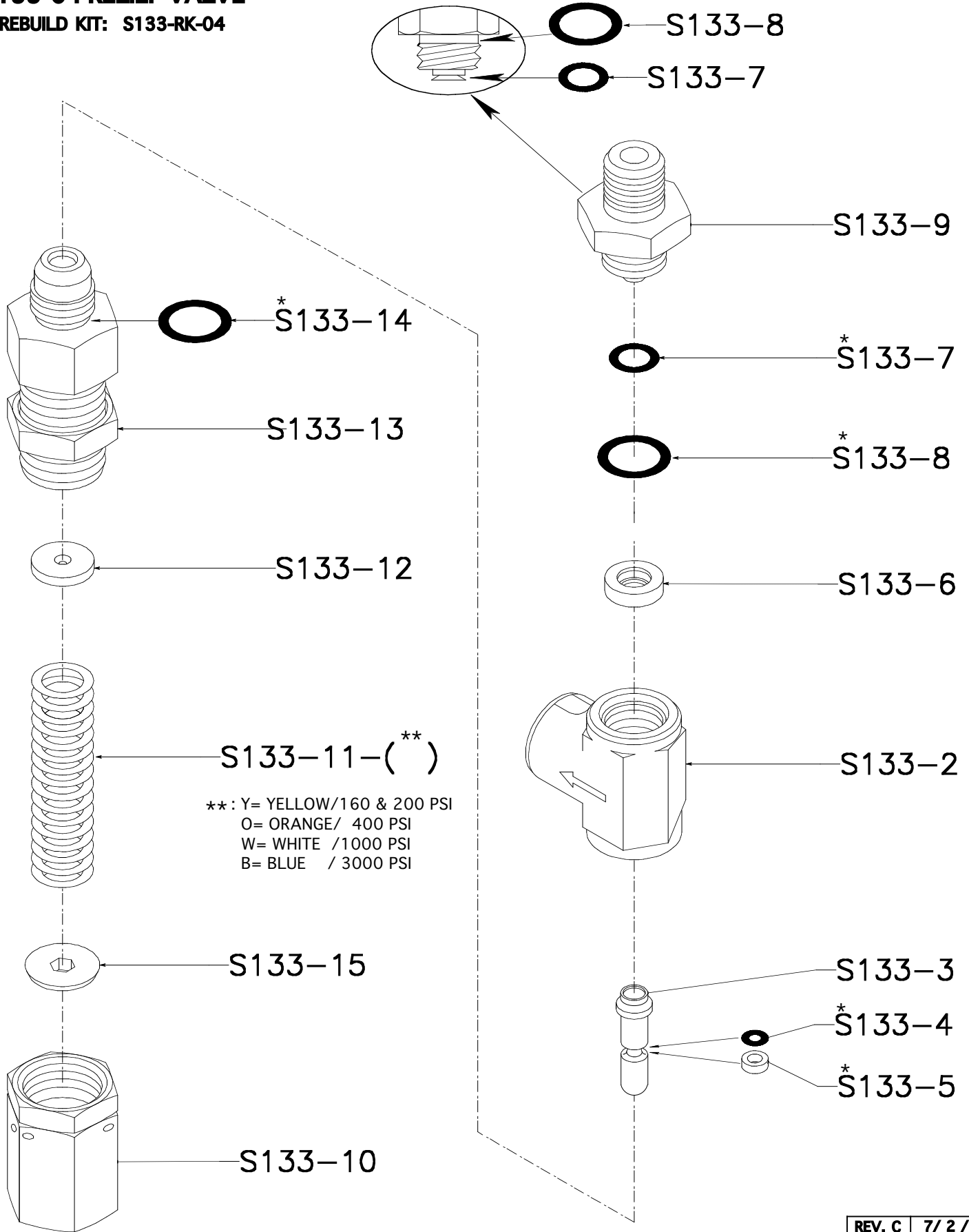
S133-04RK - RELIEF VALVE



REV. C	10 / 20 / 09
REV. B	9 / 24 / 08
REV. A	2 / 6 / 07
 MFG	8 / 3 / 04

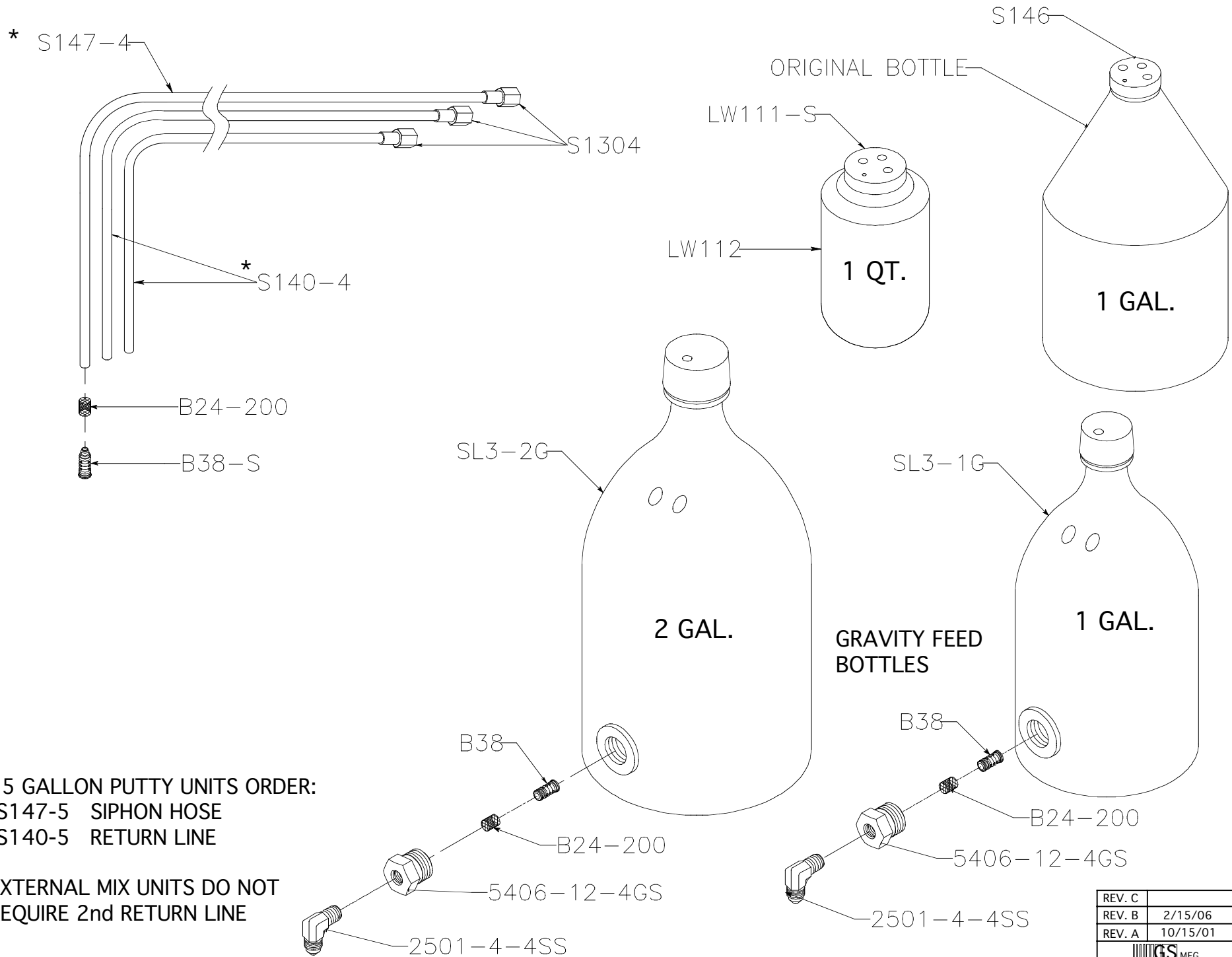
S133-04 RELIEF VALVE

* REBUILD KIT: S133-RK-04



REV. C	7/ 2 / 09
REV. B	10/8/ 08
REV. A	5/ 5 / 08
GS MFG	8 / 3 / 04

MEKP SIPHON HOSES / BOTTLES

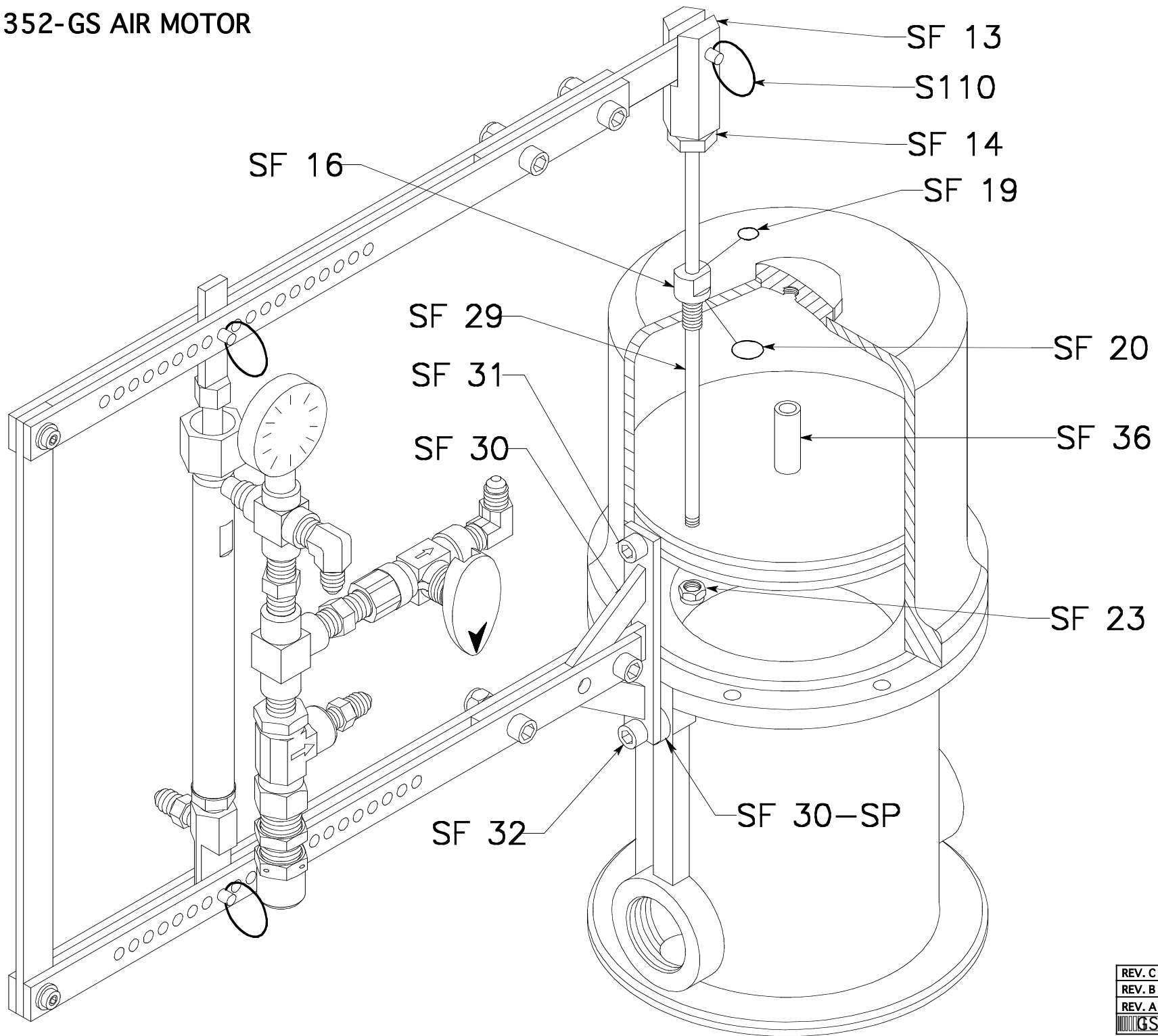


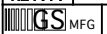
*. 55 GALLON PUTTY UNITS ORDER:
 -S147-5 SIPHON HOSE
 -S140-5 RETURN LINE

EXTERNAL MIX UNITS DO NOT
 REQUIRE 2nd RETURN LINE

REV. C	
REV. B	2/15/06
REV. A	10/15/01

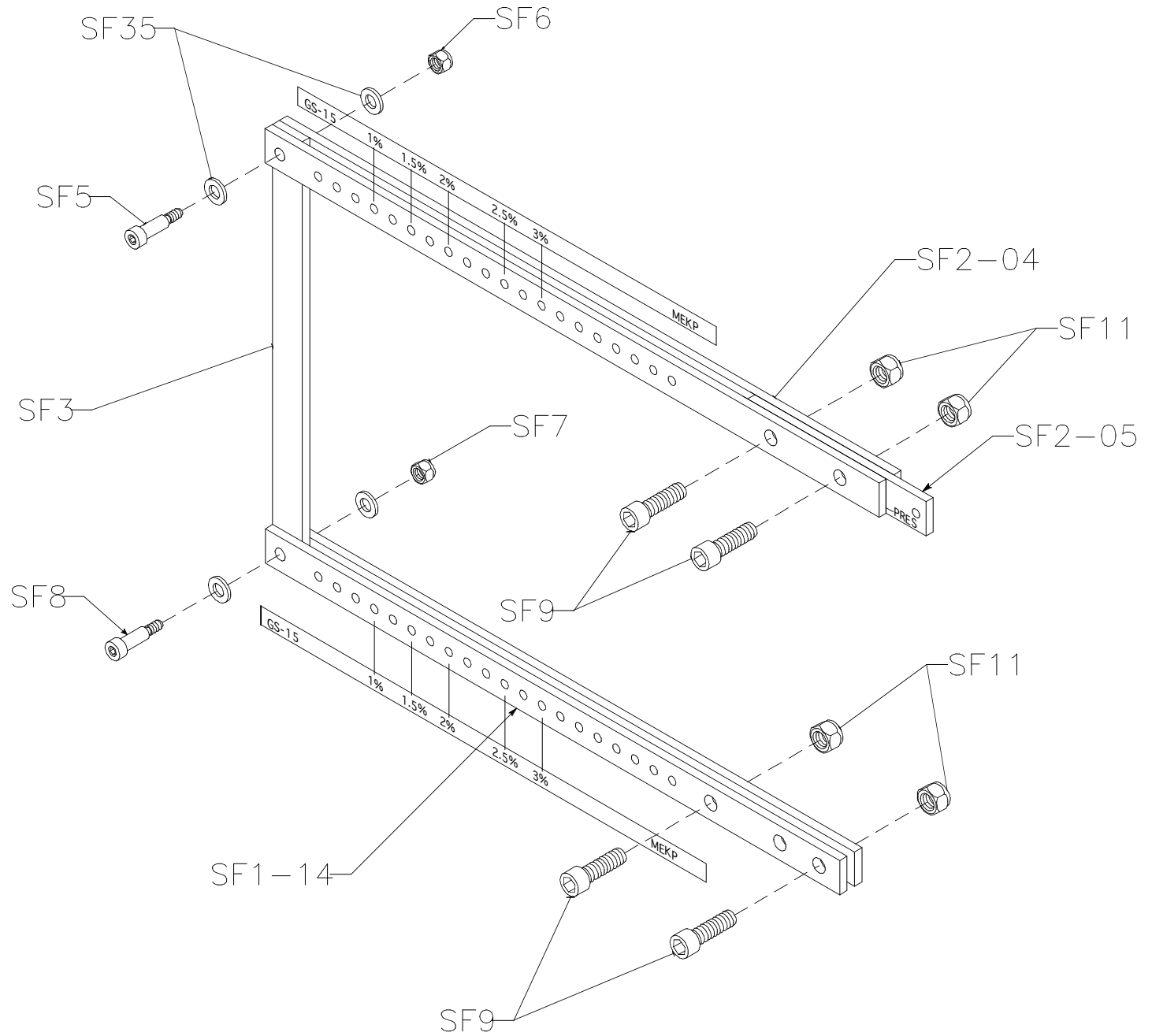
207-352-GS AIR MOTOR




REV. C	
REV. B	9/18/15
REV. A	9/29/09
 GS MFG	11/15/04

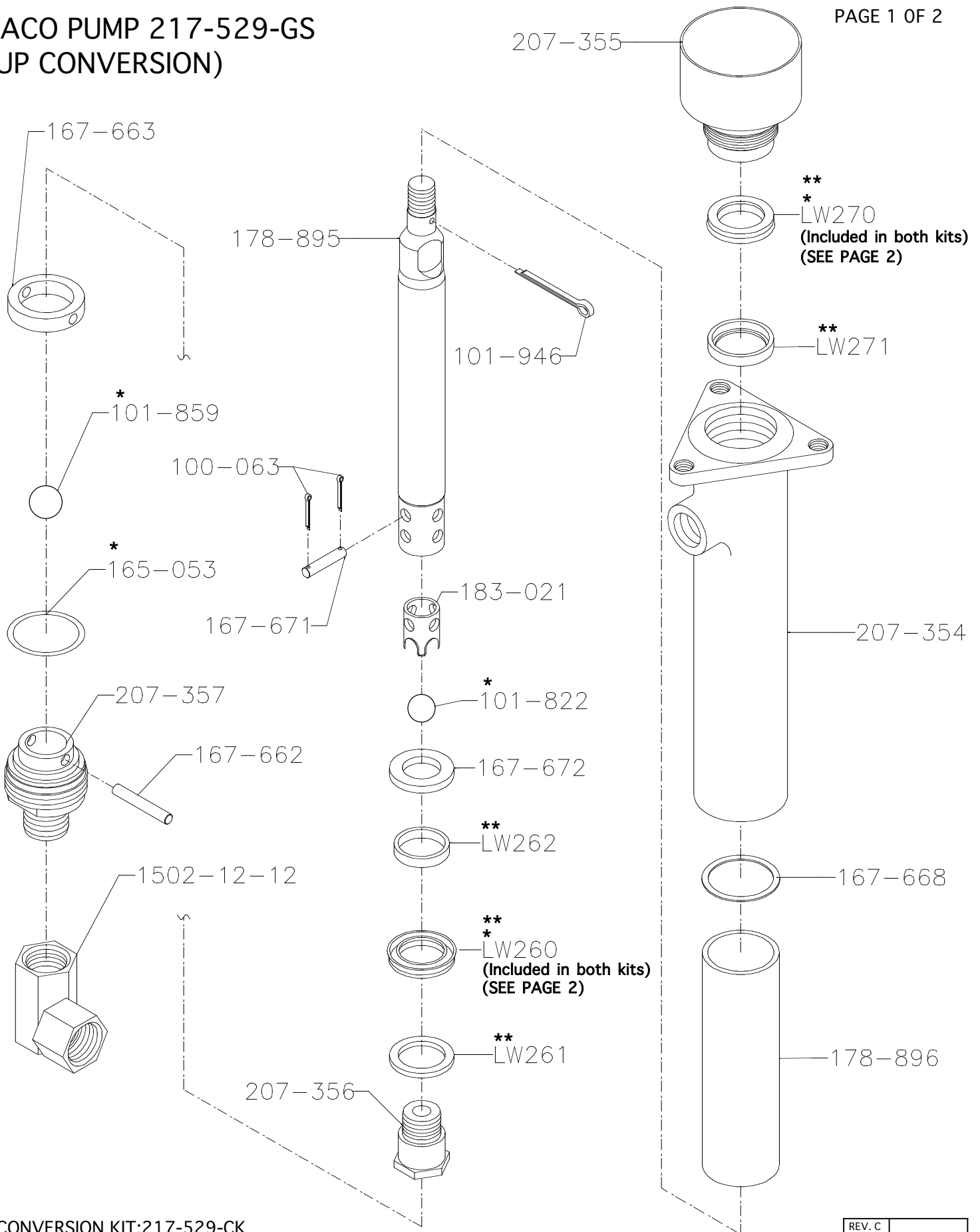
S200-SLAVE ARM ASSEMBLY

15:1 AND 10:1




REV. C	
REV. B	12/18/05
REV. A	5 /20/03
	

GRACO PUMP 217-529-GS (CUP CONVERSION)



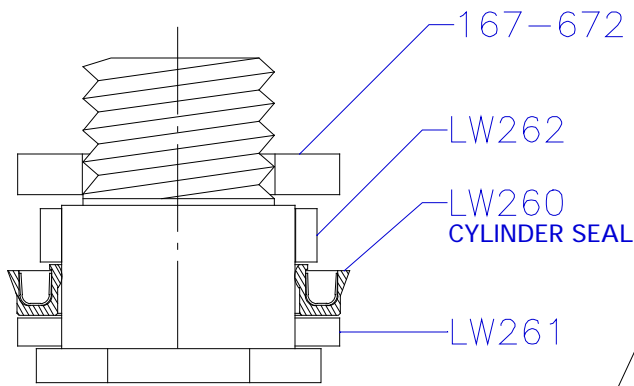
** CONVERSION KIT:217-529-CK
* REPAIR KIT:235-634-01

REV. C	
REV. B	
REV. A	9 / 3 / 08
 MFG	11 / 25 / 03

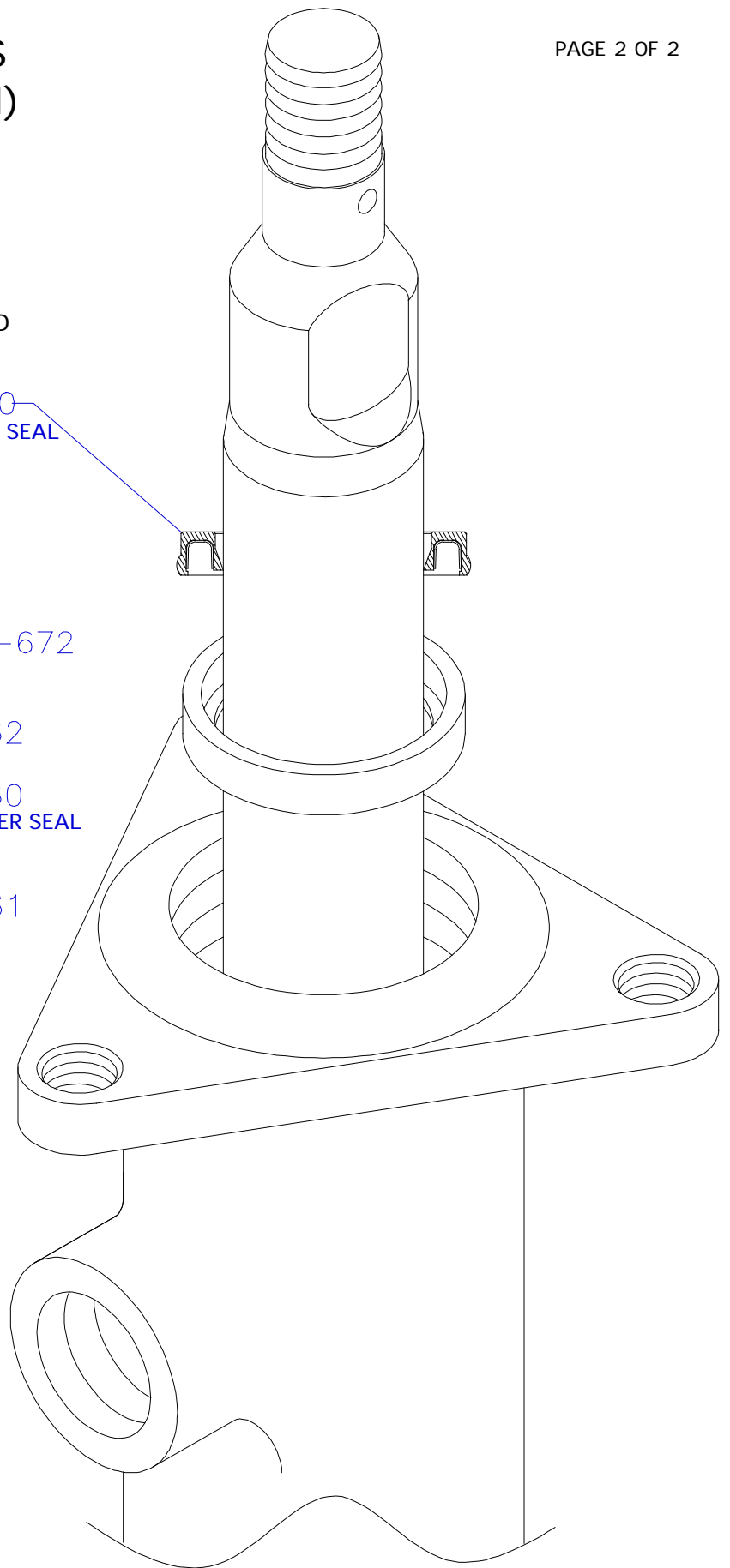
GRACO PUMP 217-529-GS (CUP SEAL INSTALLATION)

THE THROAT SEAL HAS A SHARP, POINTED LIP IN THE I.D - FACING DOWN

LW270
THROAT SEAL

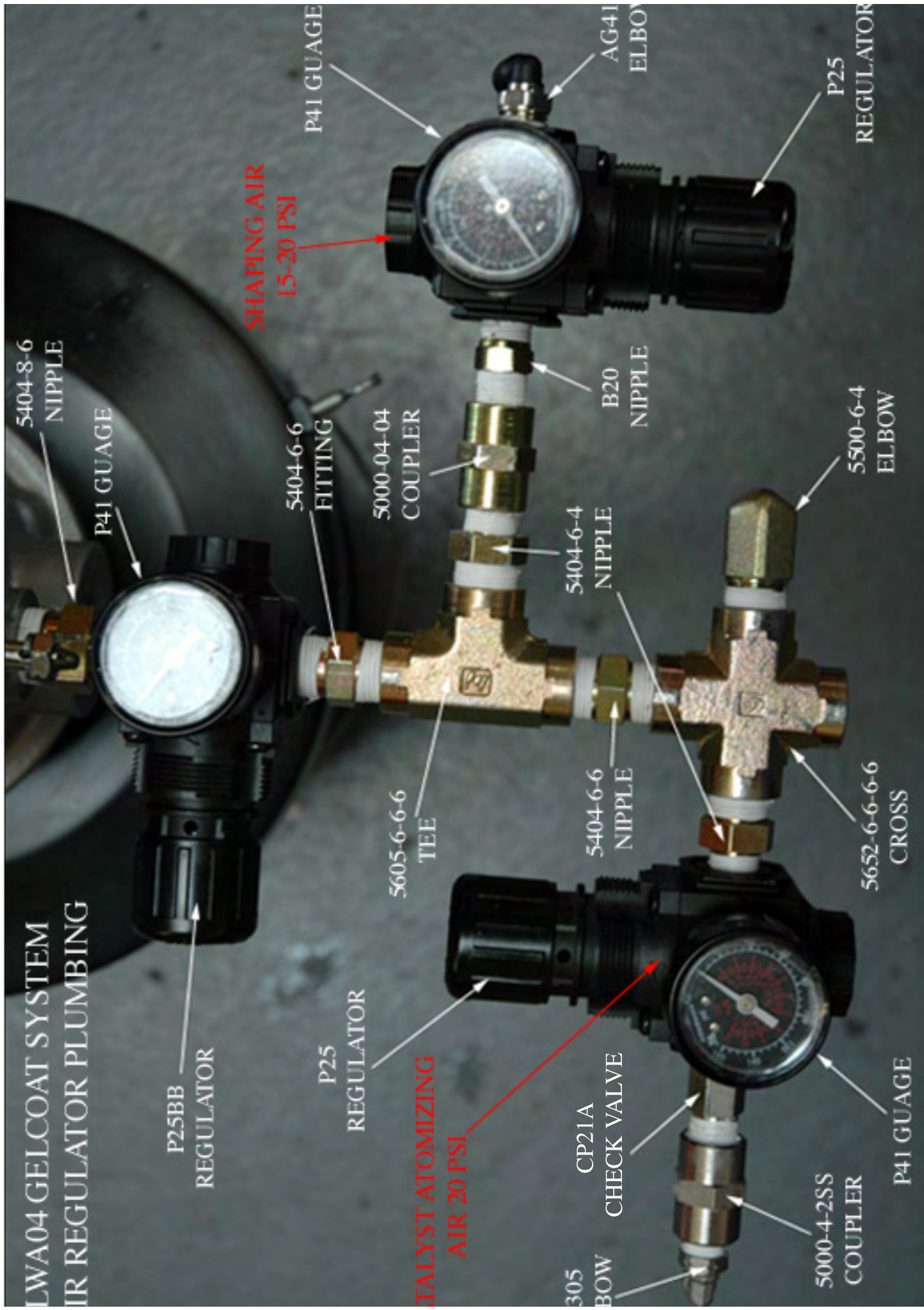


THE CYLINDER SEAL HAS A SHARP, POINTED LIP ON THE O.D - FACING UP

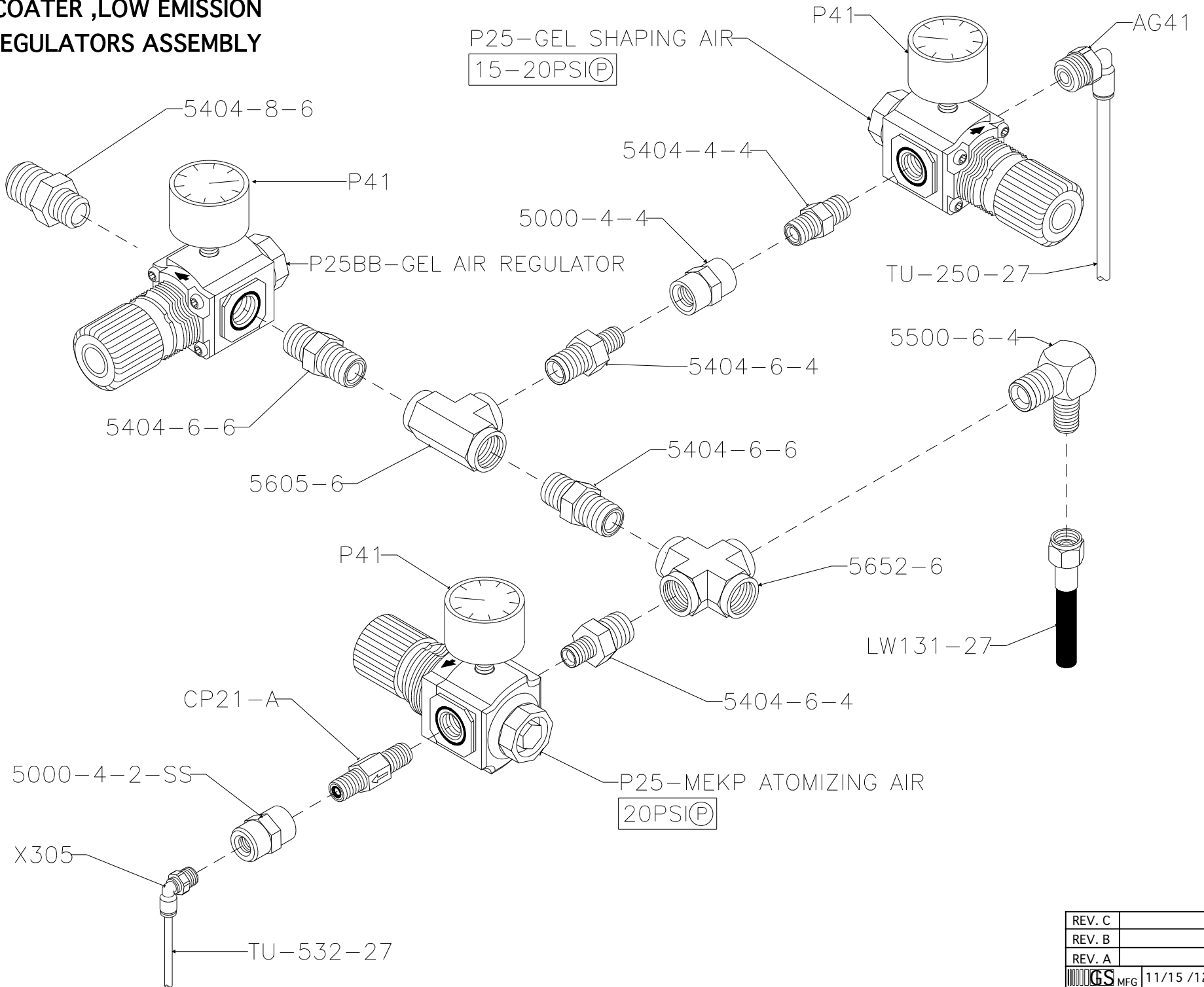



REV. C	
REV. B	
REV. A	11/25/03

LWA04 GELCOAT SYSTEM
AIR REGULATOR PLUMBING

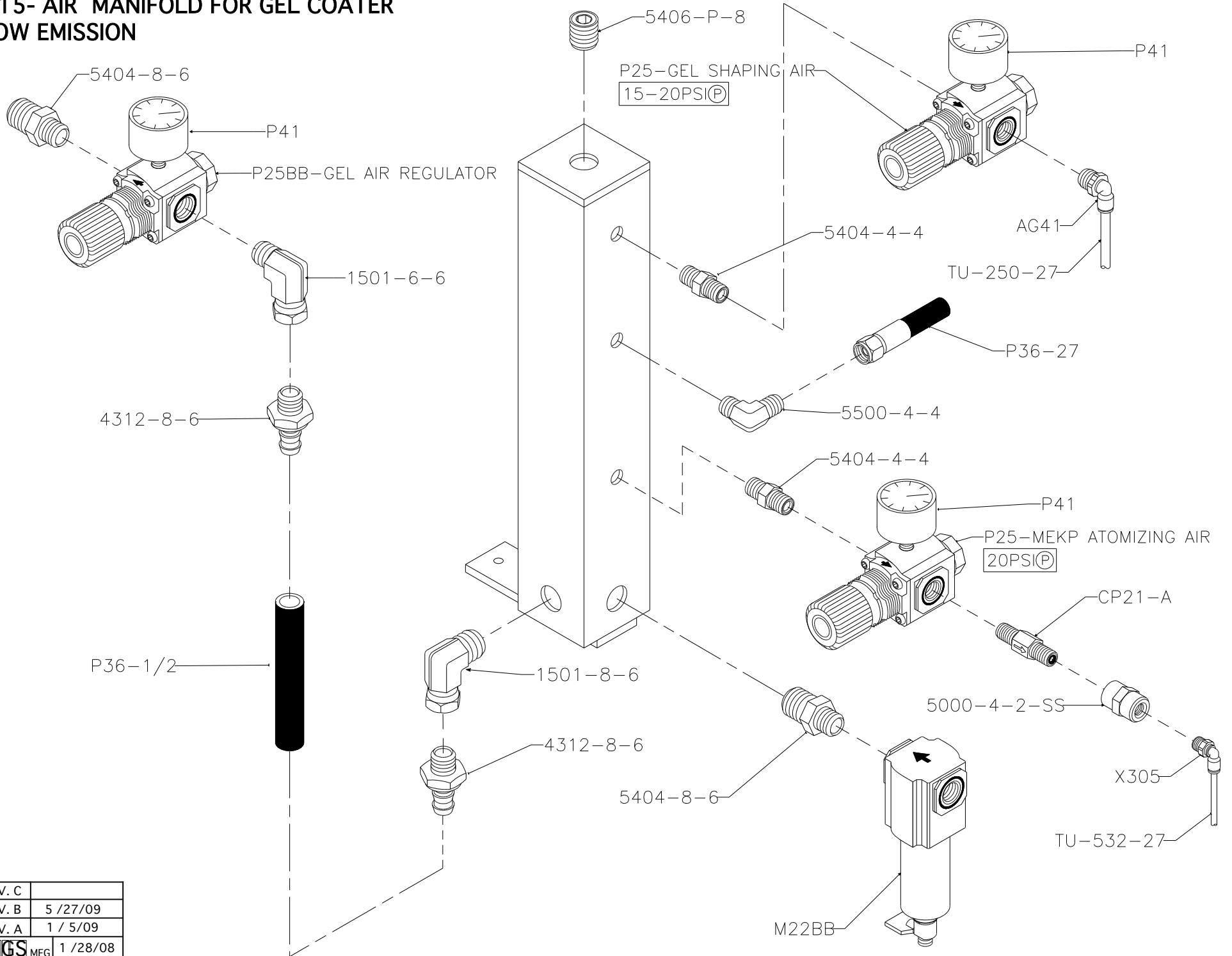



GEL COATER ,LOW EMISSION AIR REGULATORS ASSEMBLY



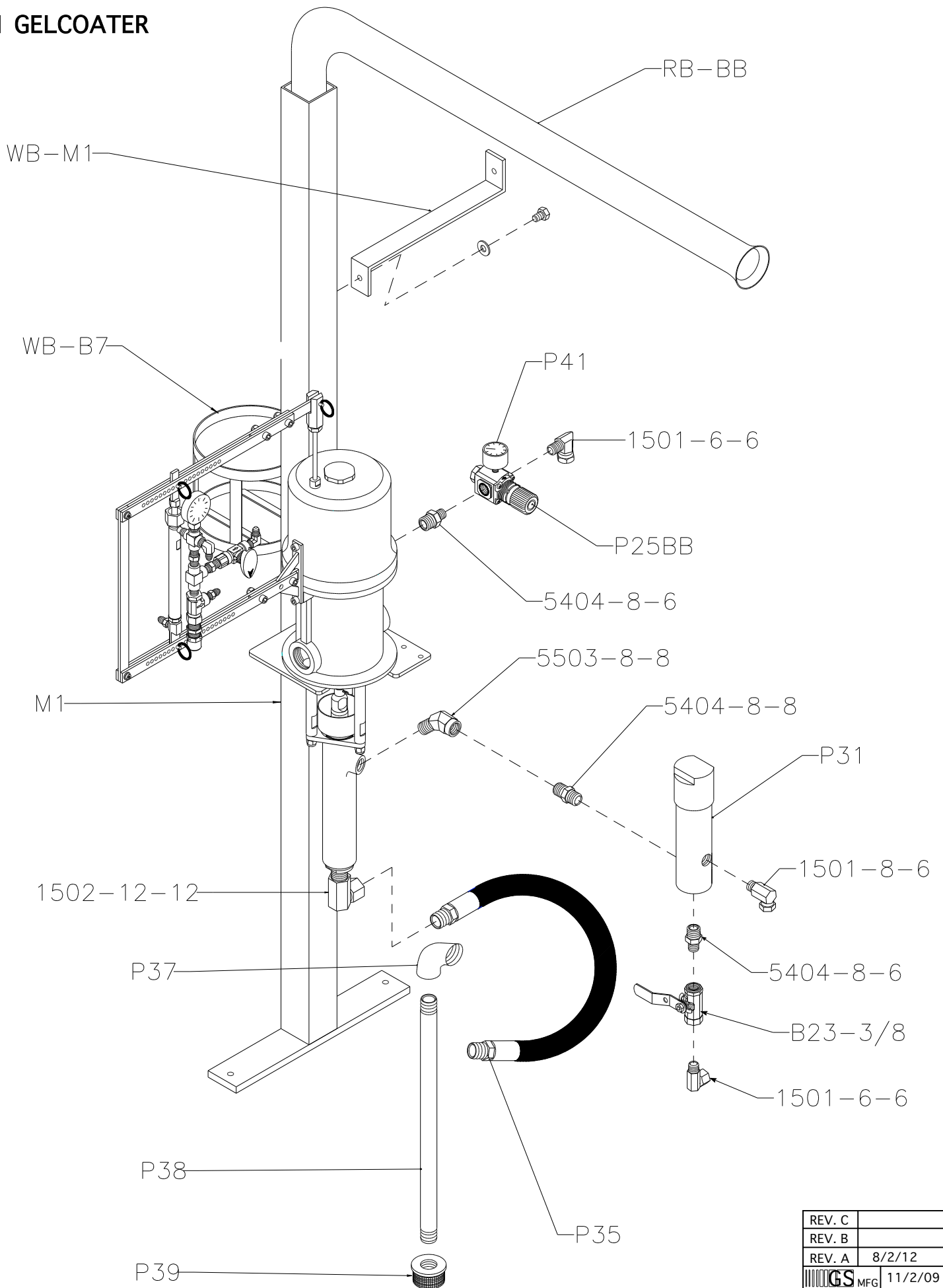
REV. C	
REV. B	
REV. A	
 MFG	11/15 /12


M15- AIR MANIFOLD FOR GEL COATER LOW EMISSION



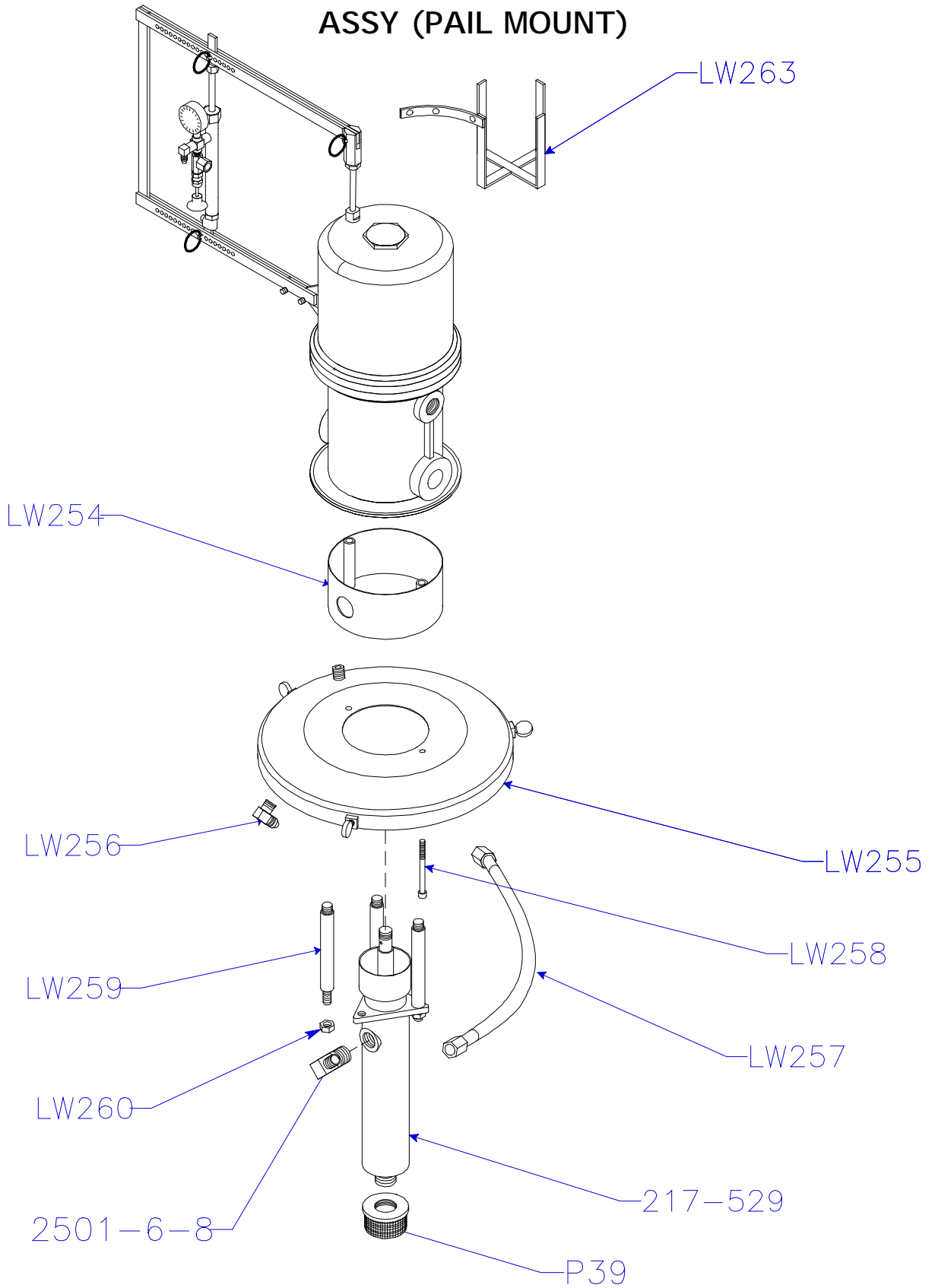
REV. C	
REV. B	5 / 27 / 09
REV. A	1 / 5 / 09
 MFG	1 / 28 / 08

15-1 GELCOATER

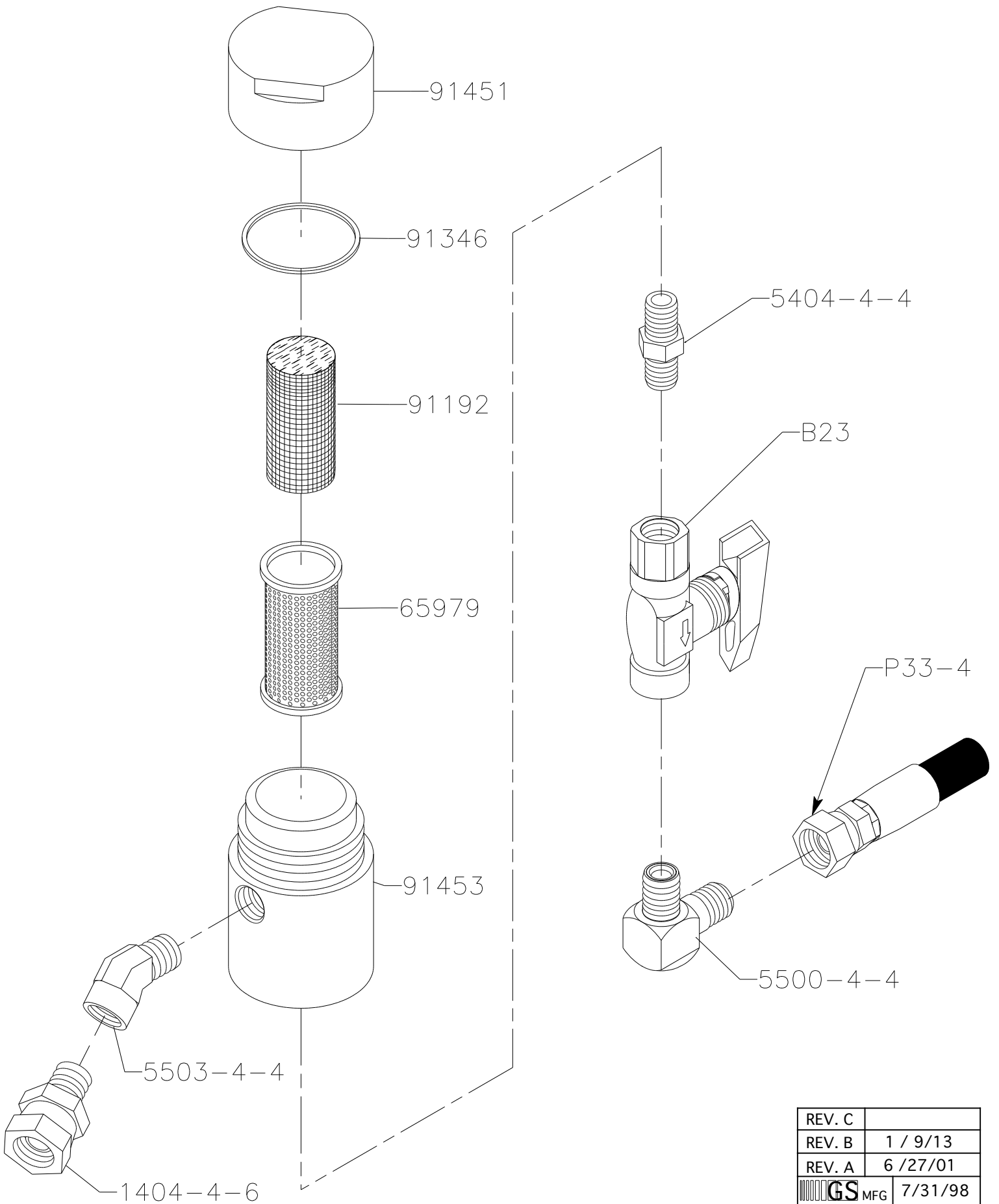



REV. C	
REV. B	
REV. A	8/2/12
 GS MFG	11/2/09

LWA04 MATERIAL PUMP ASSY (PAIL MOUNT)

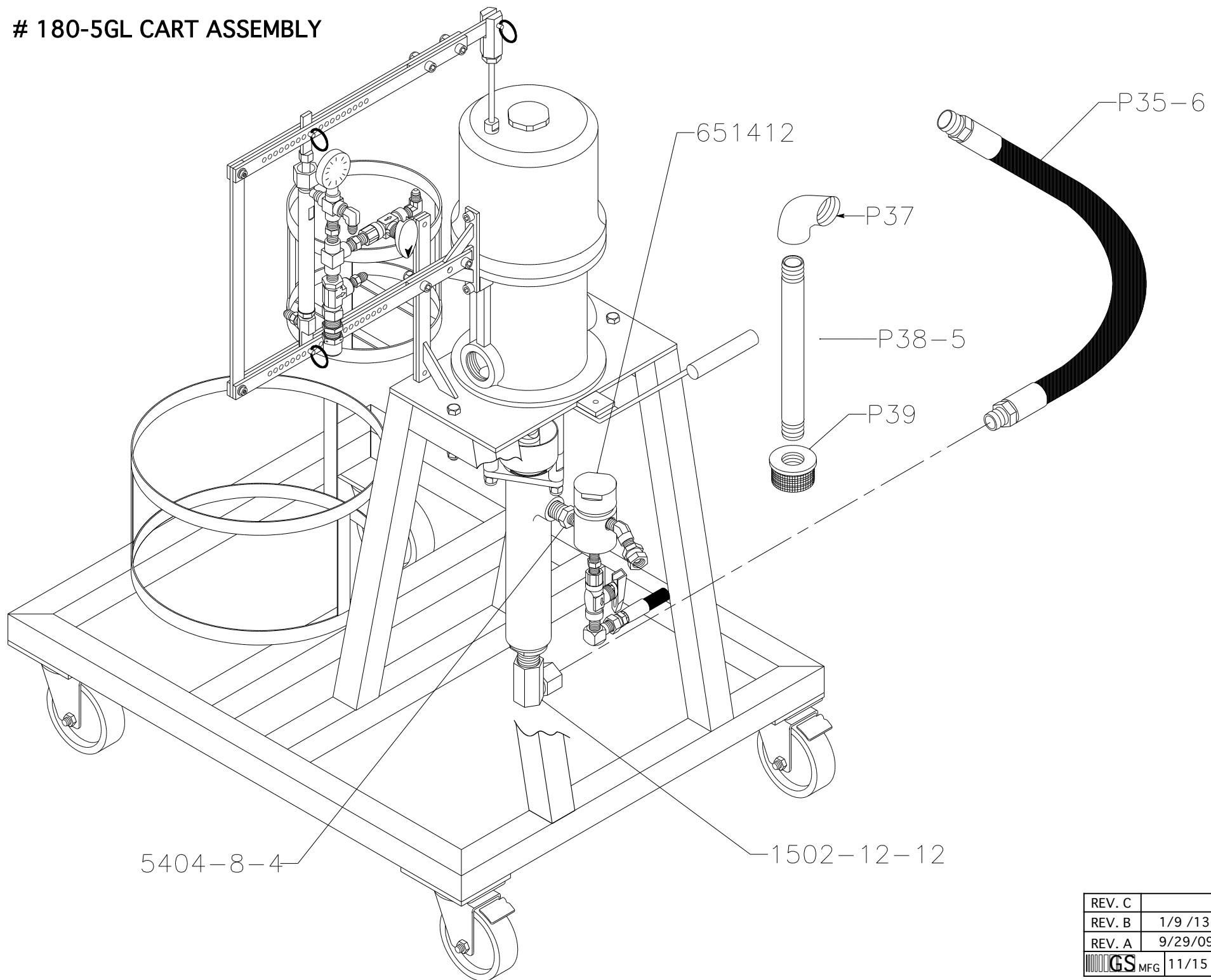



651412 FILTER ASSEMBLY



REV. C	
REV. B	1 / 9/13
REV. A	6 / 27/01
 MFG	7/31/98

180-5GL CART ASSEMBLY



REV. C		5
REV. B	1/9 /13	
REV. A	9/29/09	
 GS MFG	11/15 /04	