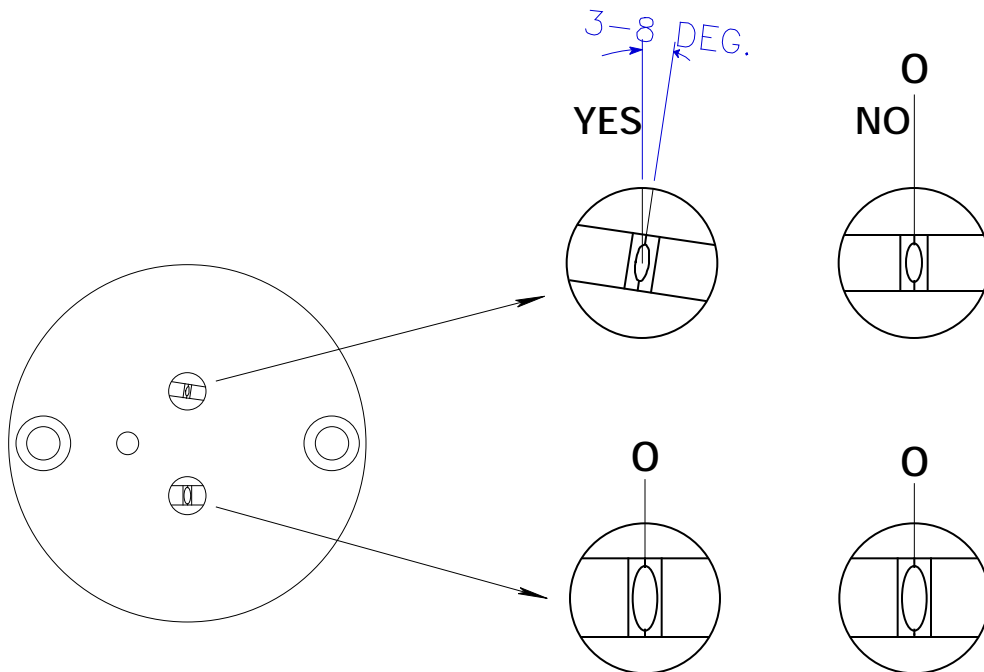


EXTERNAL-MIX SPRAY TIP ALIGNMENT

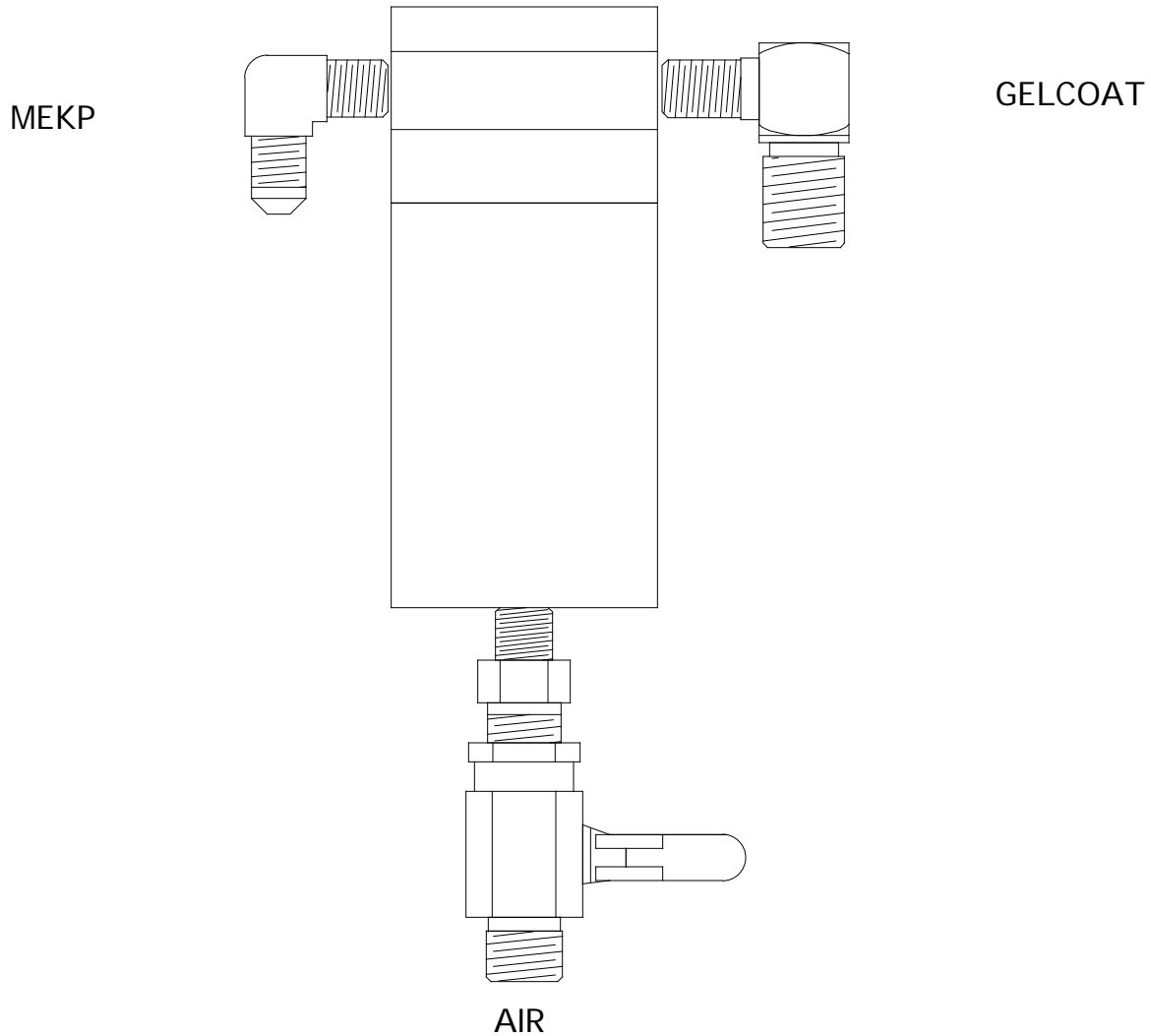
GELCOAT/WET OUT: Both fans should be in a vertical position.
tilt the gel or wet-out tip a few degrees.



If the tips are lined-up to straight, the catalyst will "blow" around the material fan, allowing MEKP droplets to float on the mold and wet surface. These droplets will look like tiny "craters". Tilt the material tip to collect all of the MEKP fan.

Continued

36. Screw in LW120 elbow on right fluid intake port of LW205 plate.



37. Screw in LW122 elbow on left intake port of LW205 plate.

38. Connect MEKP filter assembly LW123 & LW129 and stainless steel whip LW130 to LW122 elbow.

39. Connect LW121 gelcoat hose to LW120 elbow.

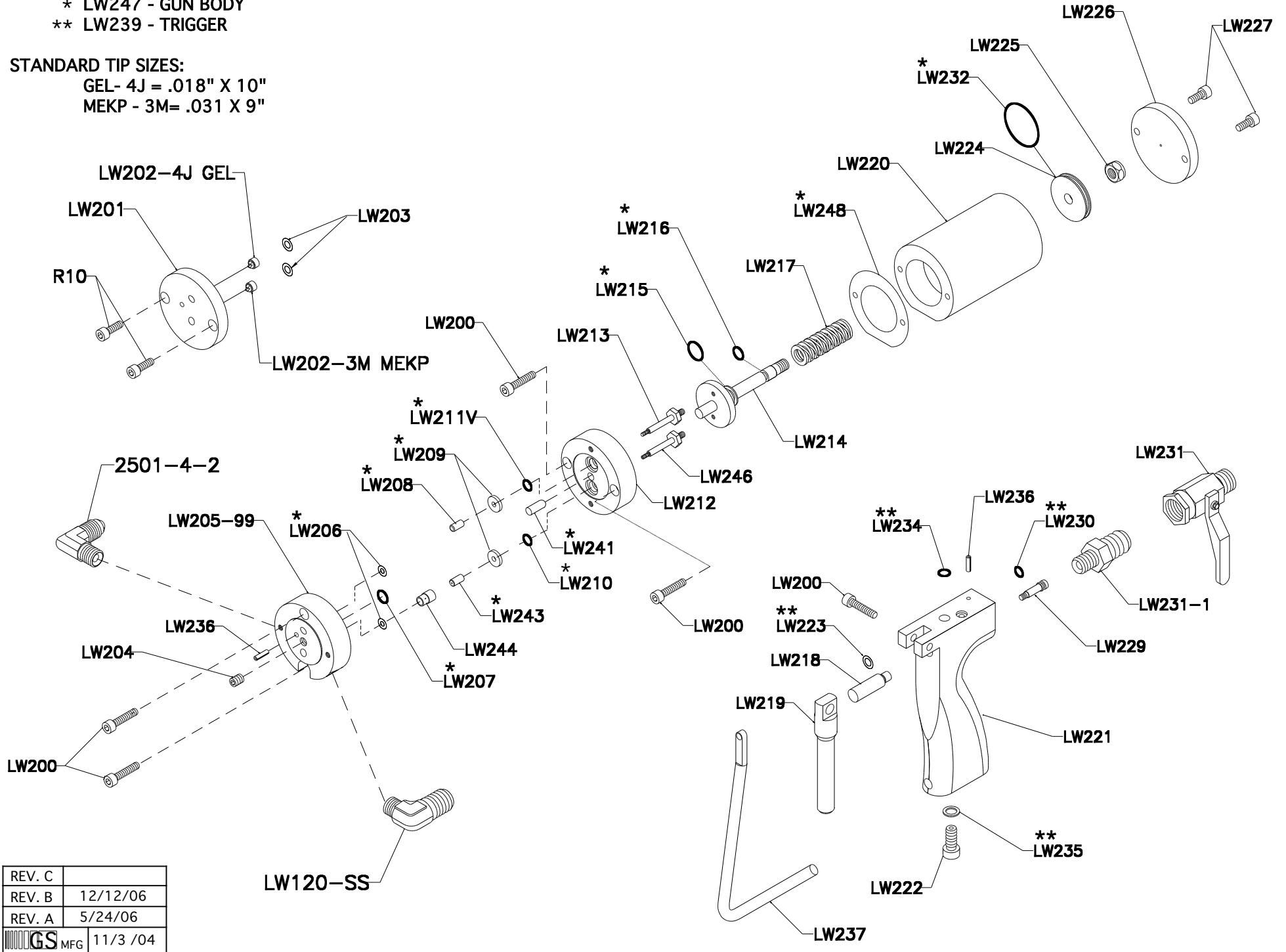
REBUILD KITS:


- * LW247 - GUN BODY
- ** LW239 - TRIGGER

STANDARD TIP SIZES:

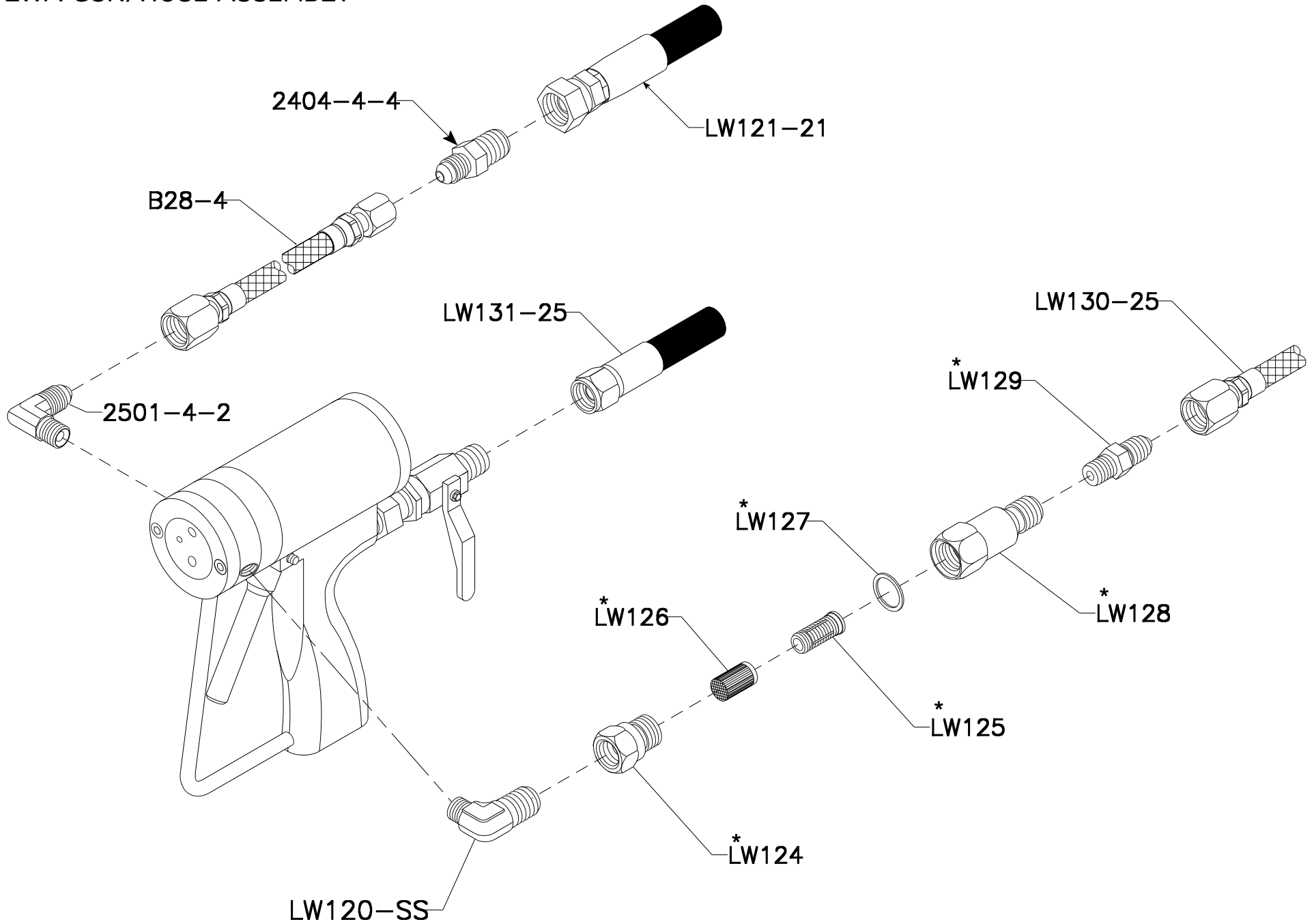
- GEL- 4J = .018" X 10"
- MEKP - 3M = .031 X 9"

LWA1000 GUN



REV. C	
REV. B	12/12/06
REV. A	5/24/06
 MFG	11/3 /04

LWA GUN/HOSE ASSEMBLY

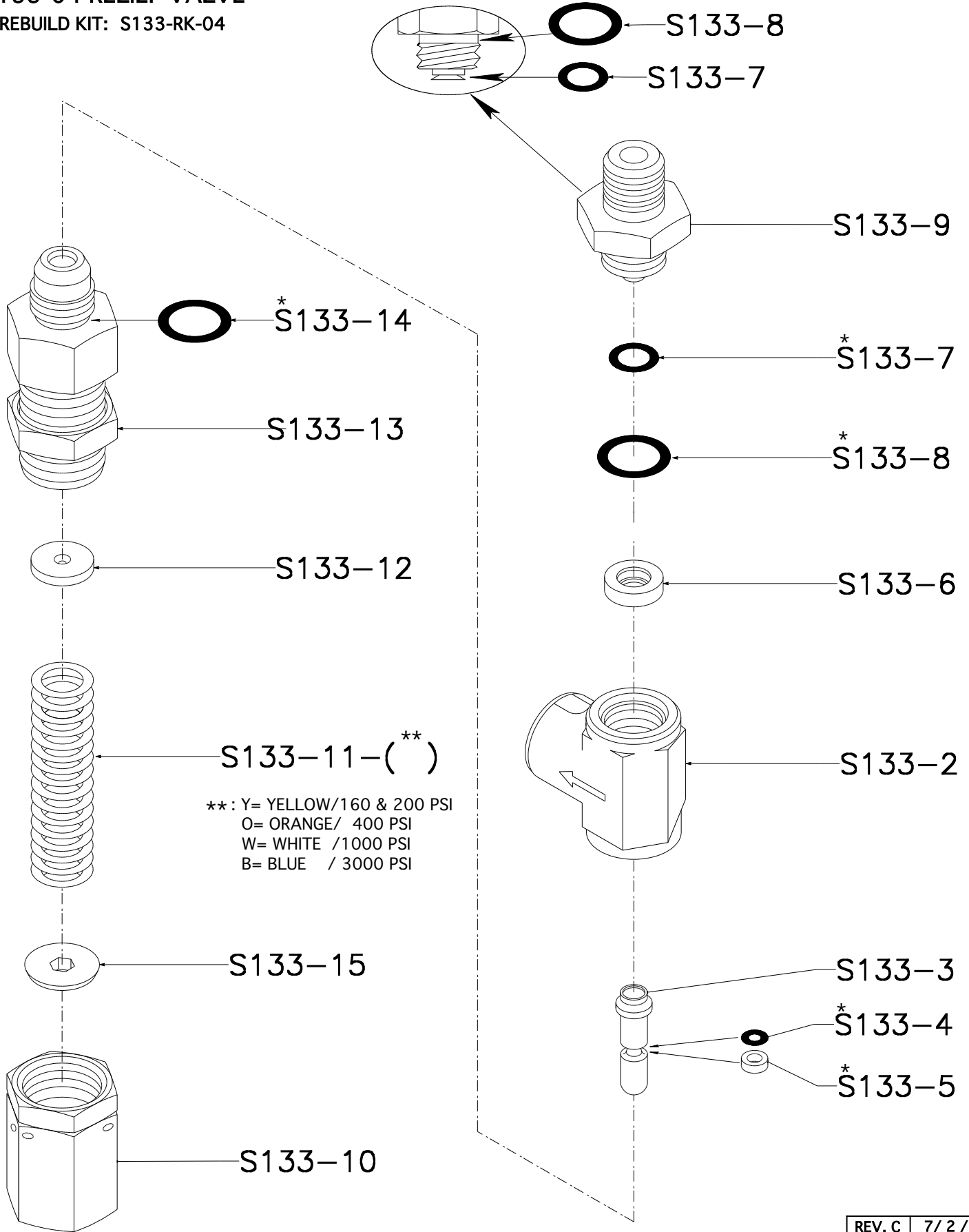


*:MEKP FILTER ASSEMBLY
B40-200

REV. C	
REV. B	11/21/12
REV. A	8/21/12
GS MFG	6/12/00

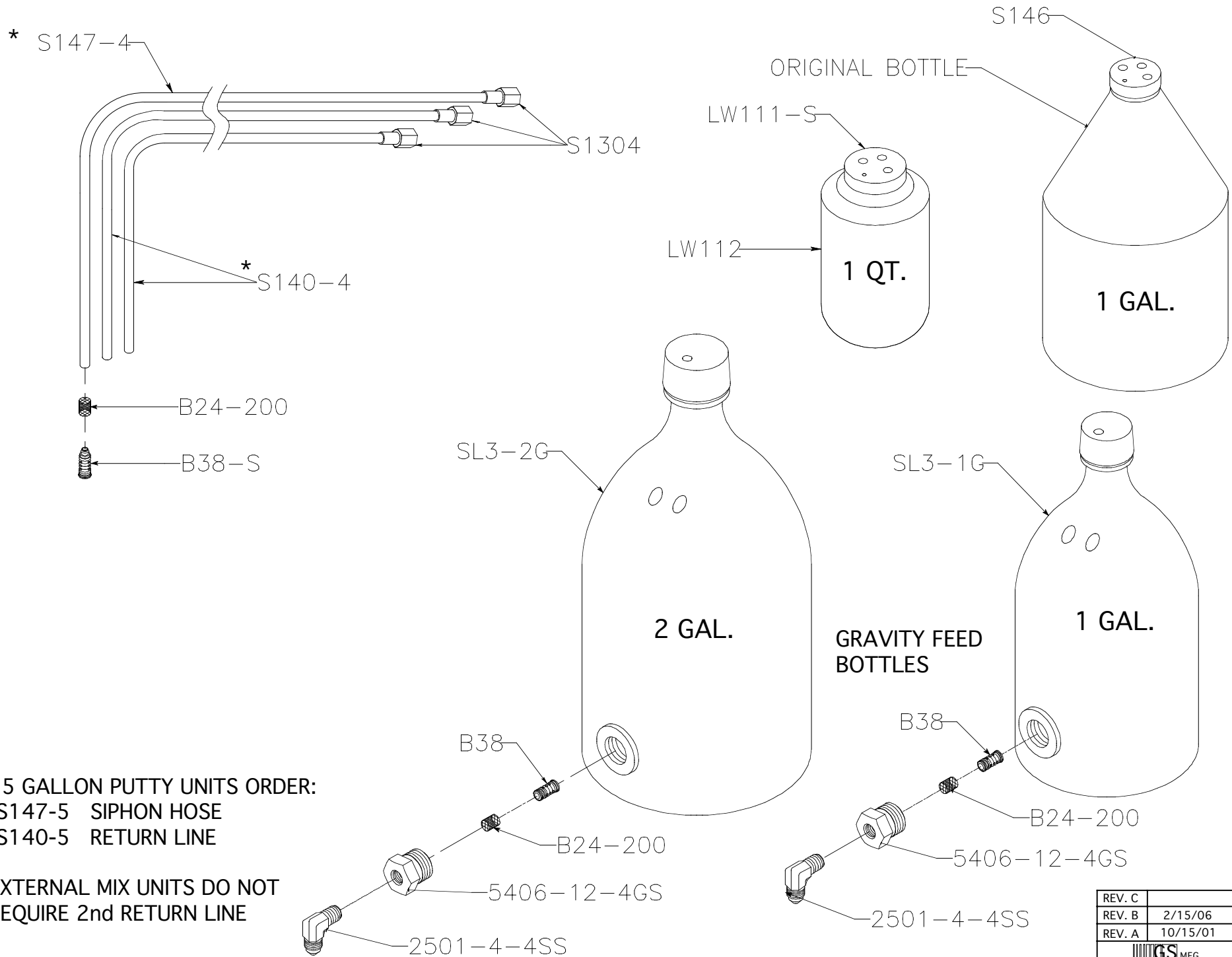
S133-04 RELIEF VALVE

* REBUILD KIT: S133-RK-04



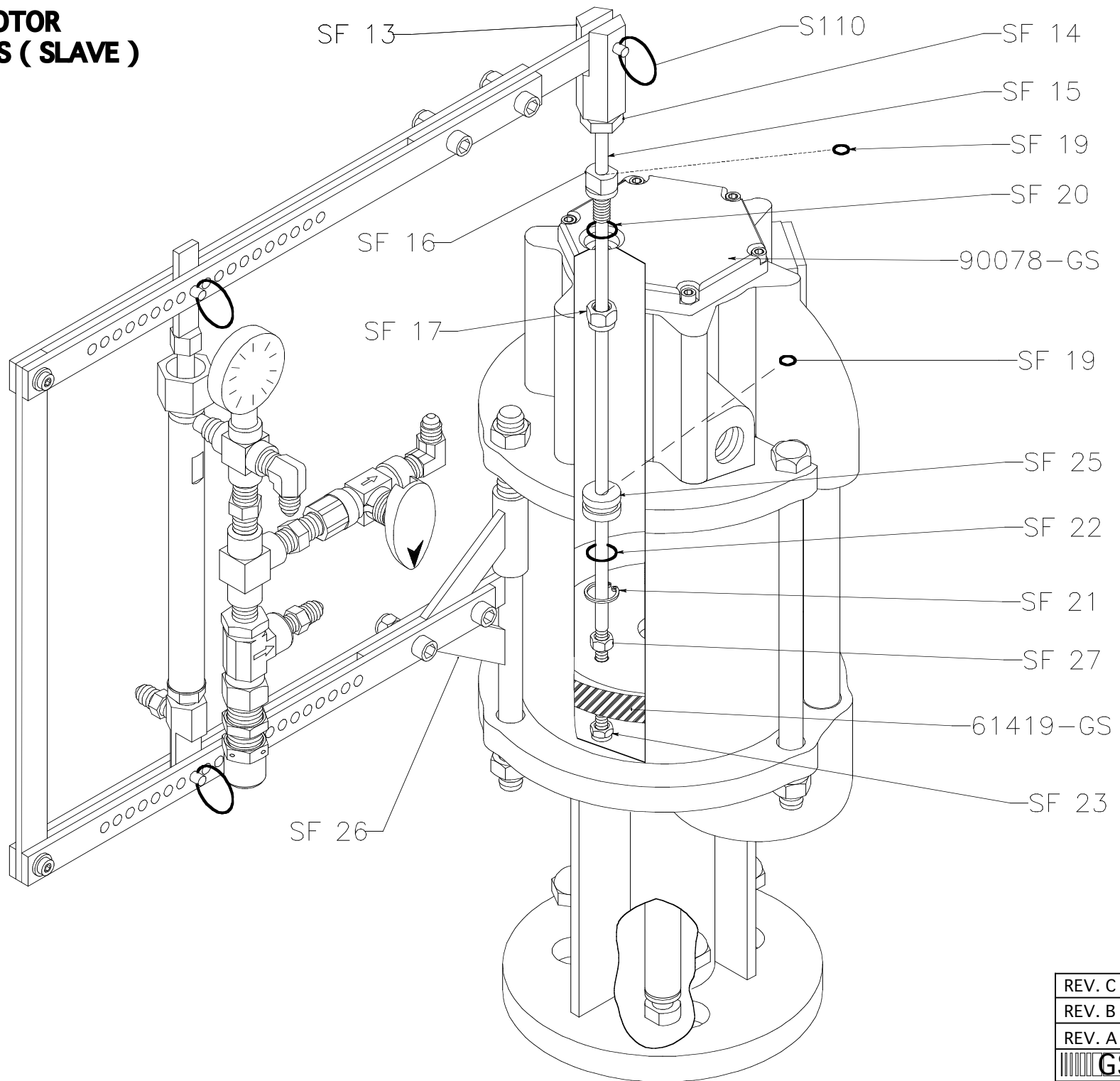
REV. C	7/ 2 / 09
REV. B	10/8/ 08
REV. A	5/ 5 / 08
GS MFG	8 / 3 / 04


MEKP SIPHON HOSES / BOTTLES



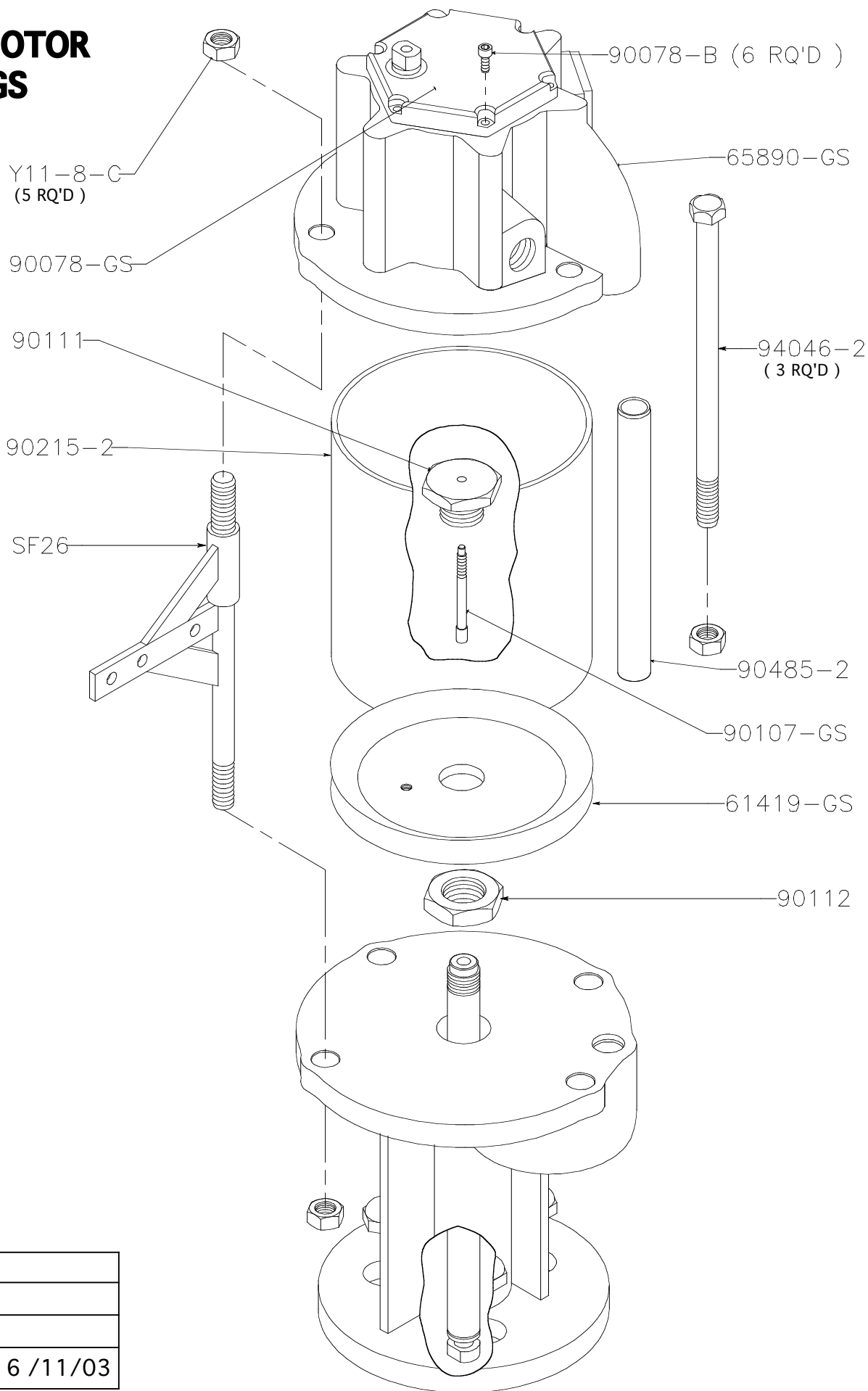
REV. C	
REV. B	2/15/06
REV. A	10/15/01


**6" AIR MOTOR
65665-GS (SLAVE)**



REV. C	
REV. B	7 /16 /09
REV. A	12 /13/05
 MFG	6 /24/03

6" AIR MOTOR 65665-GS



REV. C	
REV. B	
REV. A	
 MFG	6 / 11 / 03

RESIN / GELCOAT

11:1

22:1

65465-GS

65665-GS

Y85-29-C

90102

90109

90096

90102

90163-4

90531-GS

90102


90109

90109

90096

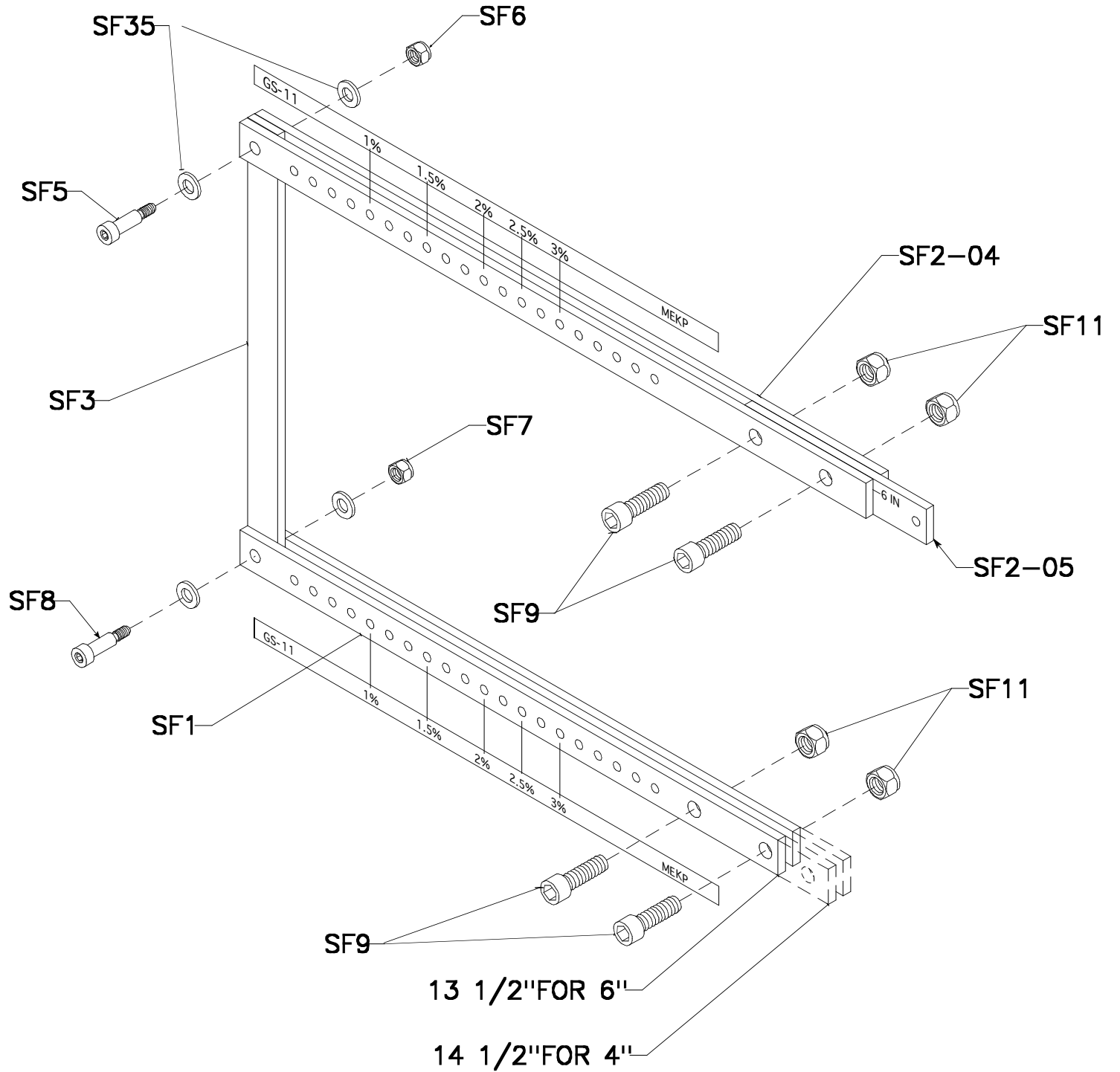
90096

66300R43

REV. C	
REV. B	
REV. A	8 / 4 / 09
 GS MFG	11 / 14 / 97

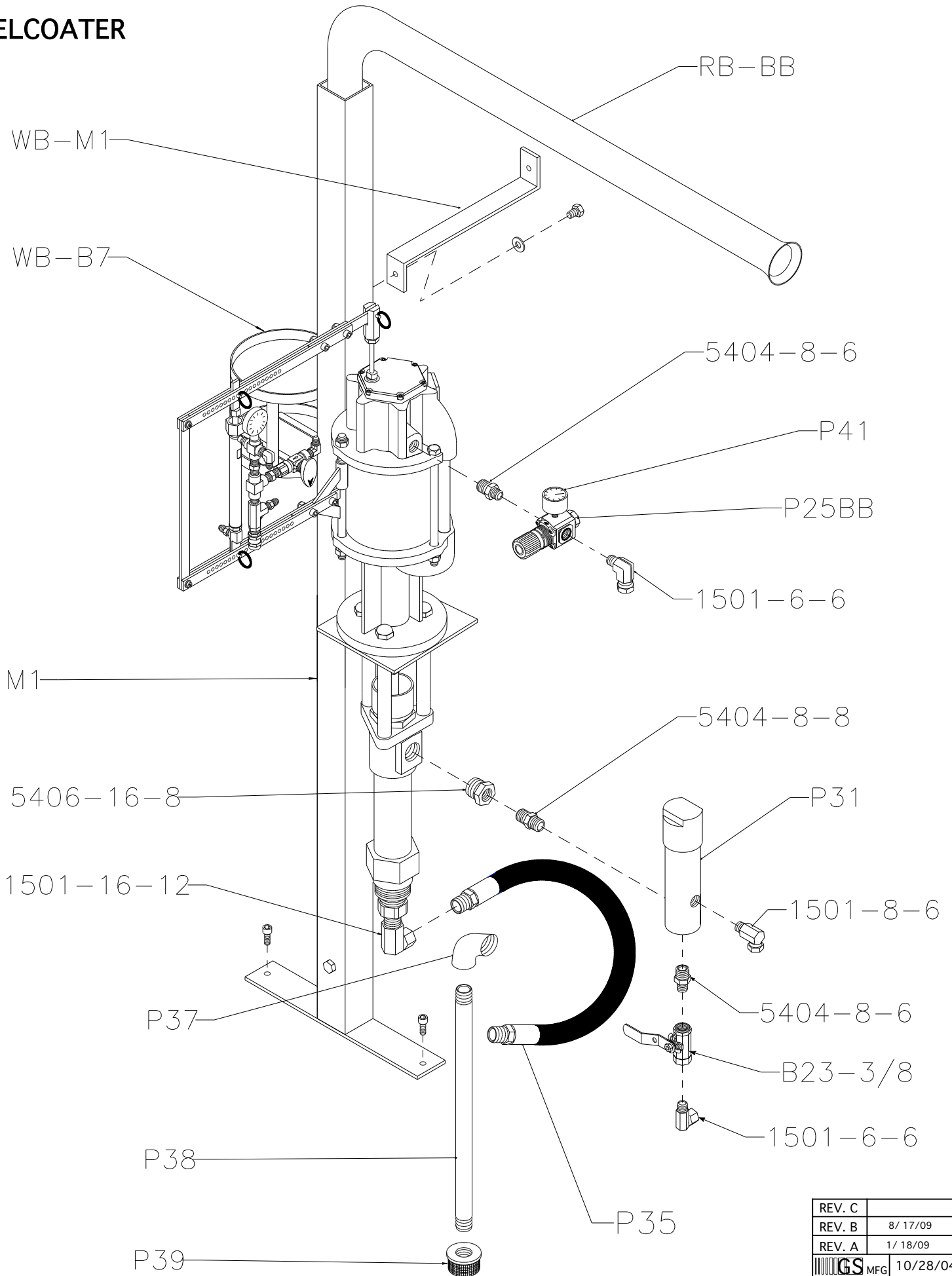
S200-SLAVE ARM ASSEMBLY

11:1 / 4" AIR MOTOR
 22:1 / 6" AIR MOTOR



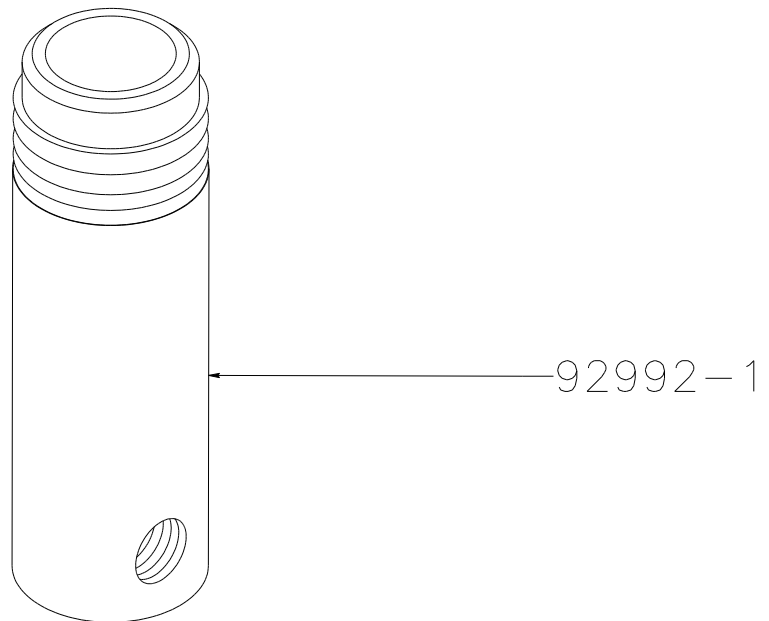
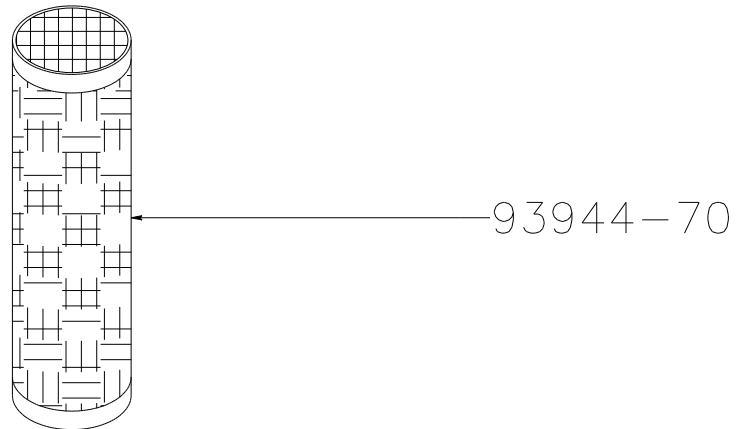
REV. C	11/26/12
REV. B	3 /9/06
REV. A	5 /20/03


GELCOATER



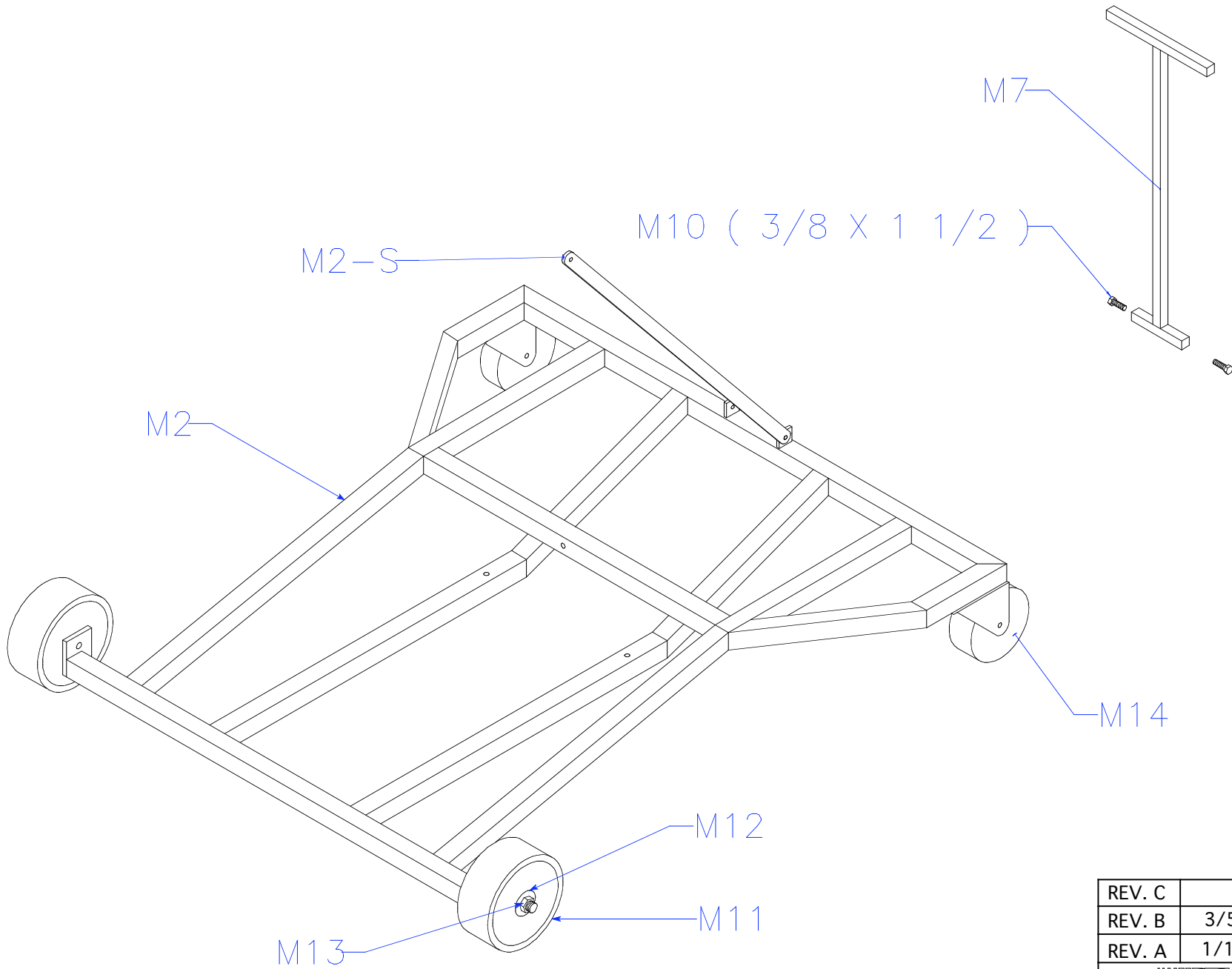
REV. C	
REV. B	8/17/09
REV. A	1/18/09
GS MFG	10/28/04

P31 MATERIAL FILTER



REV. C	
REV. B	7/23/13
REV. A	6/27/00
 GS MFG	7 /31/97

180 CART ASSEMBLY



REV. C	
REV. B	3/5/03
REV. A	1/17/03
