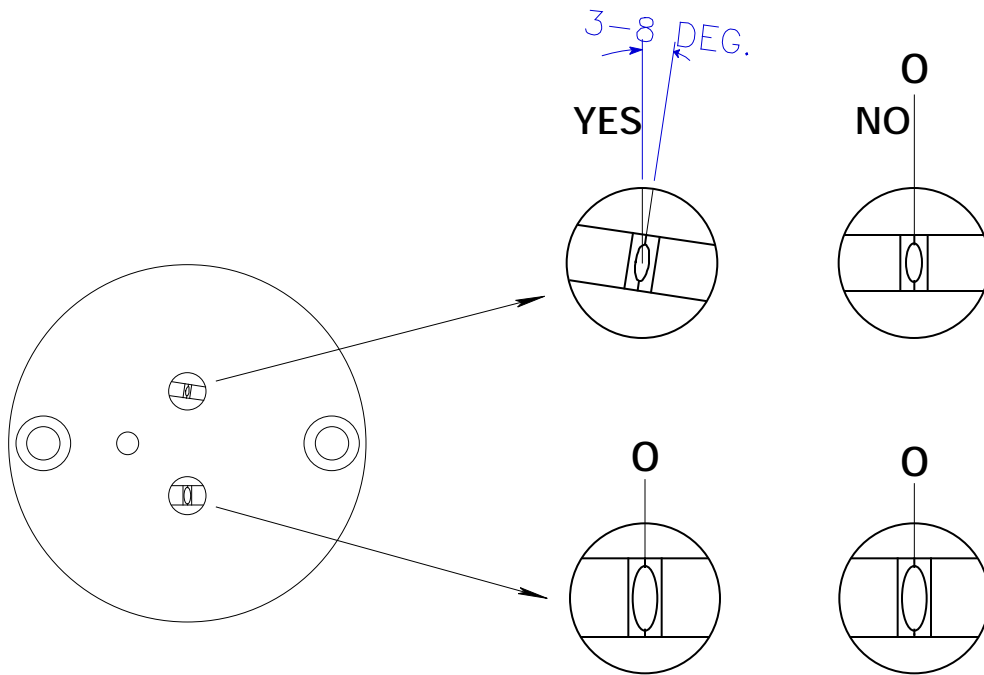


EXTERNAL-MIX SPRAY TIP ALIGNMENT

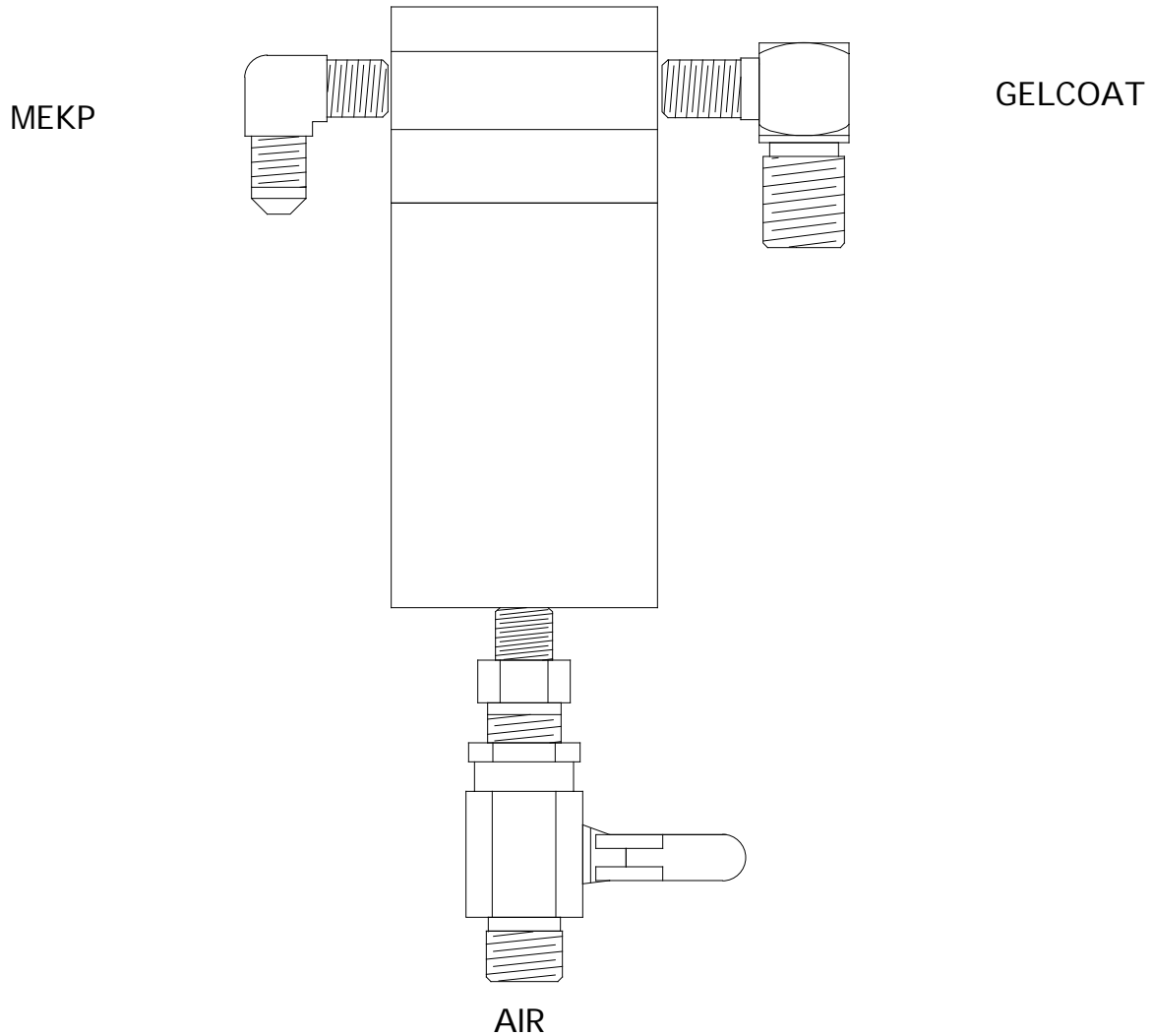
GELCOAT/WET OUT: Both fans should be in a vertical position.
tilt the gel or wet-out tip a few degrees.



If the tips are lined-up to straight, the catalyst will "blow" around the material fan, allowing MEKP droplets to float on the mold and wet surface. These droplets will look like tiny "craters". Tilt the material tip to collect all of the MEKP fan.

Continued

36. Screw in LW120 elbow on right fluid intake port of LW205 plate.



37. Screw in LW122 elbow on left intake port of LW205 plate.

38. Connect MEKP filter assembly LW123 & LW129 and stainless steel whip LW130 to LW122 elbow.

39. Connect LW121 gelcoat hose to LW120 elbow.

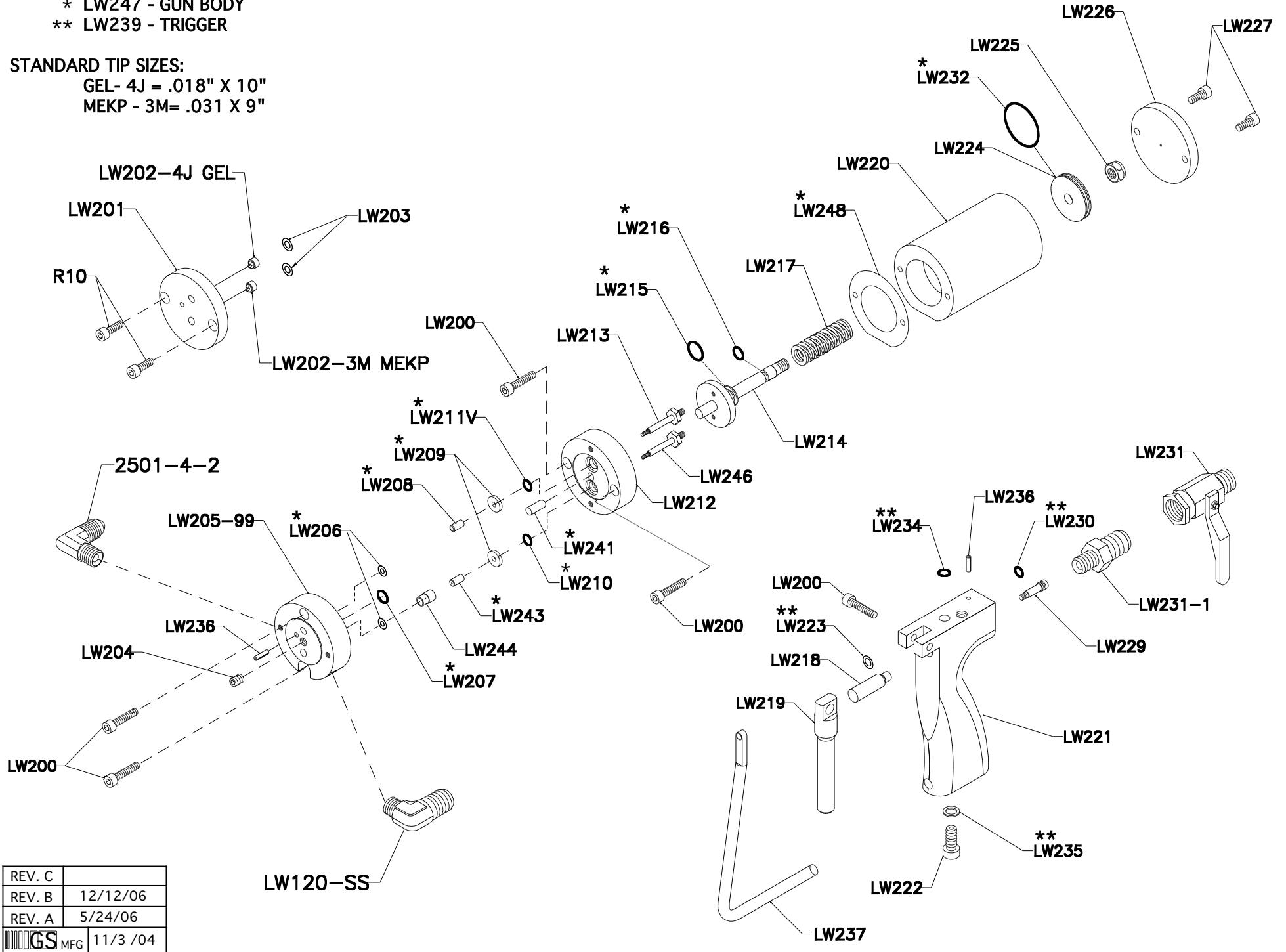
REBUILD KITS:


- * LW247 - GUN BODY
- ** LW239 - TRIGGER

STANDARD TIP SIZES:

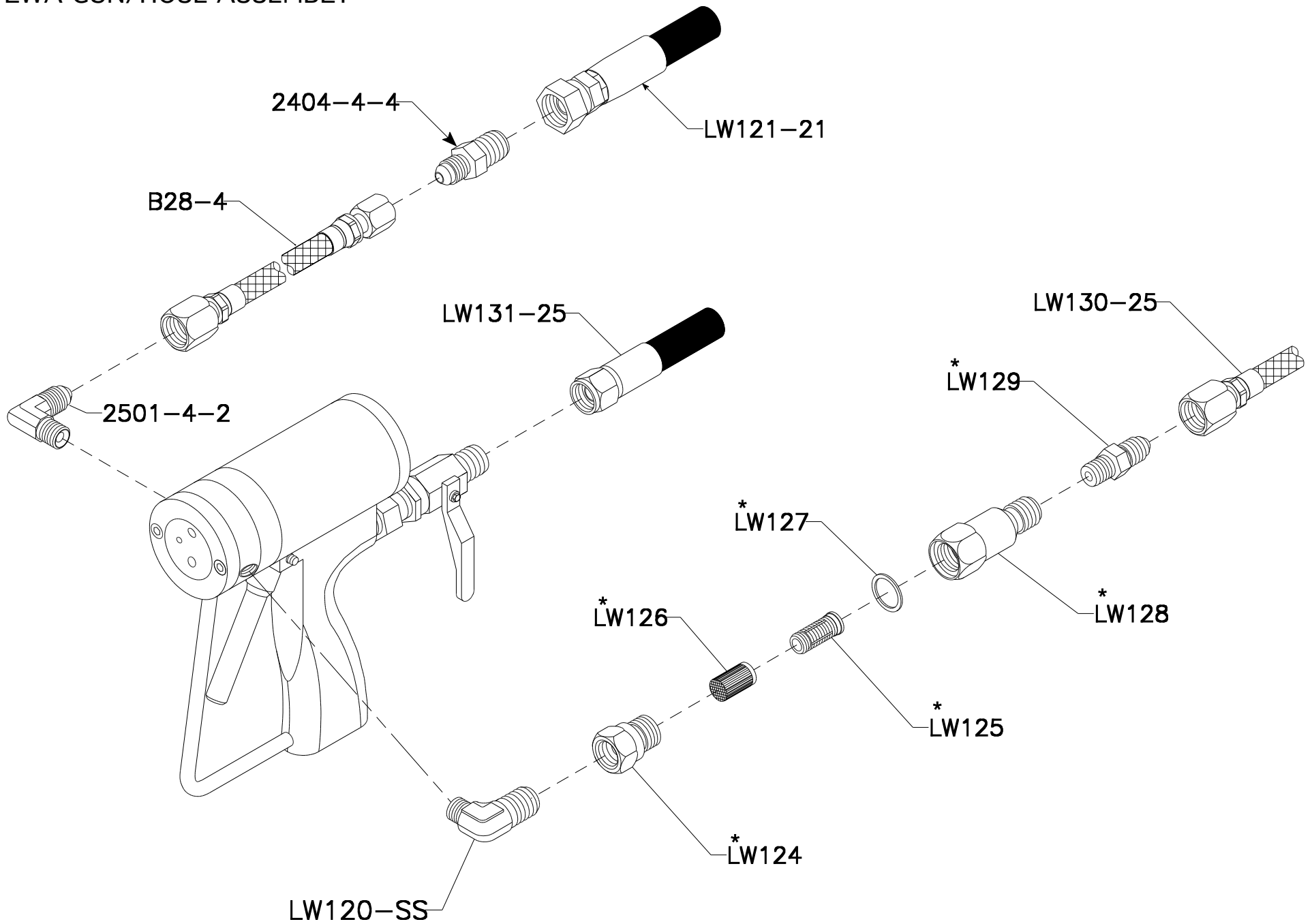
- GEL- 4J = .018" X 10"
- MEKP - 3M = .031 X 9"

LWA1000 GUN




REV. C	
REV. B	12/12/06
REV. A	5/24/06
 MFG	11/3 /04

LWA GUN/HOSE ASSEMBLY



*:MEKP FILTER ASSEMBLY
B40-200

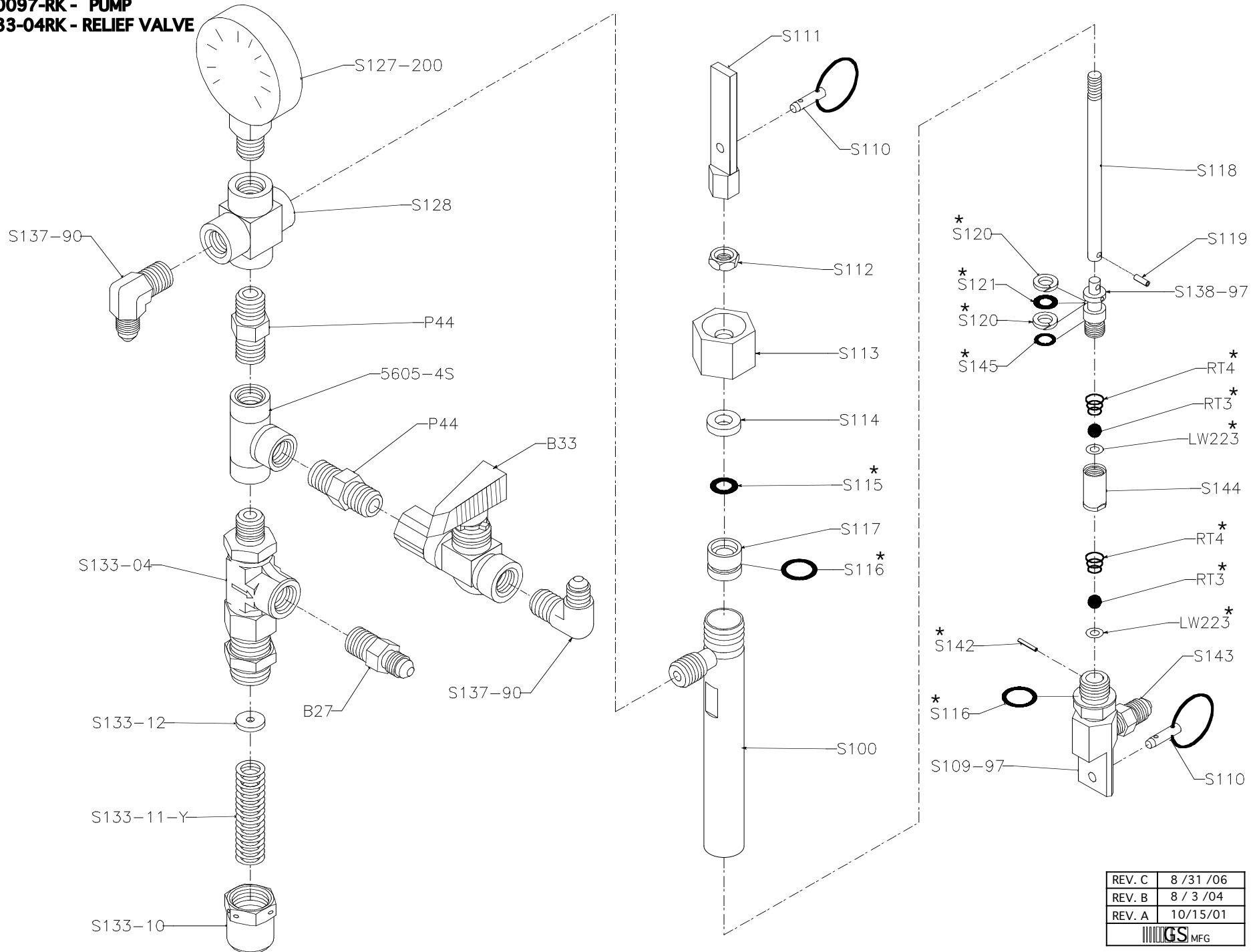
REV. C	
REV. B	11/21/12
REV. A	8/21/12
 MFG	6/12/00

S1000-200-04

REBUILD KITS:

* S10097-RK - PUMP

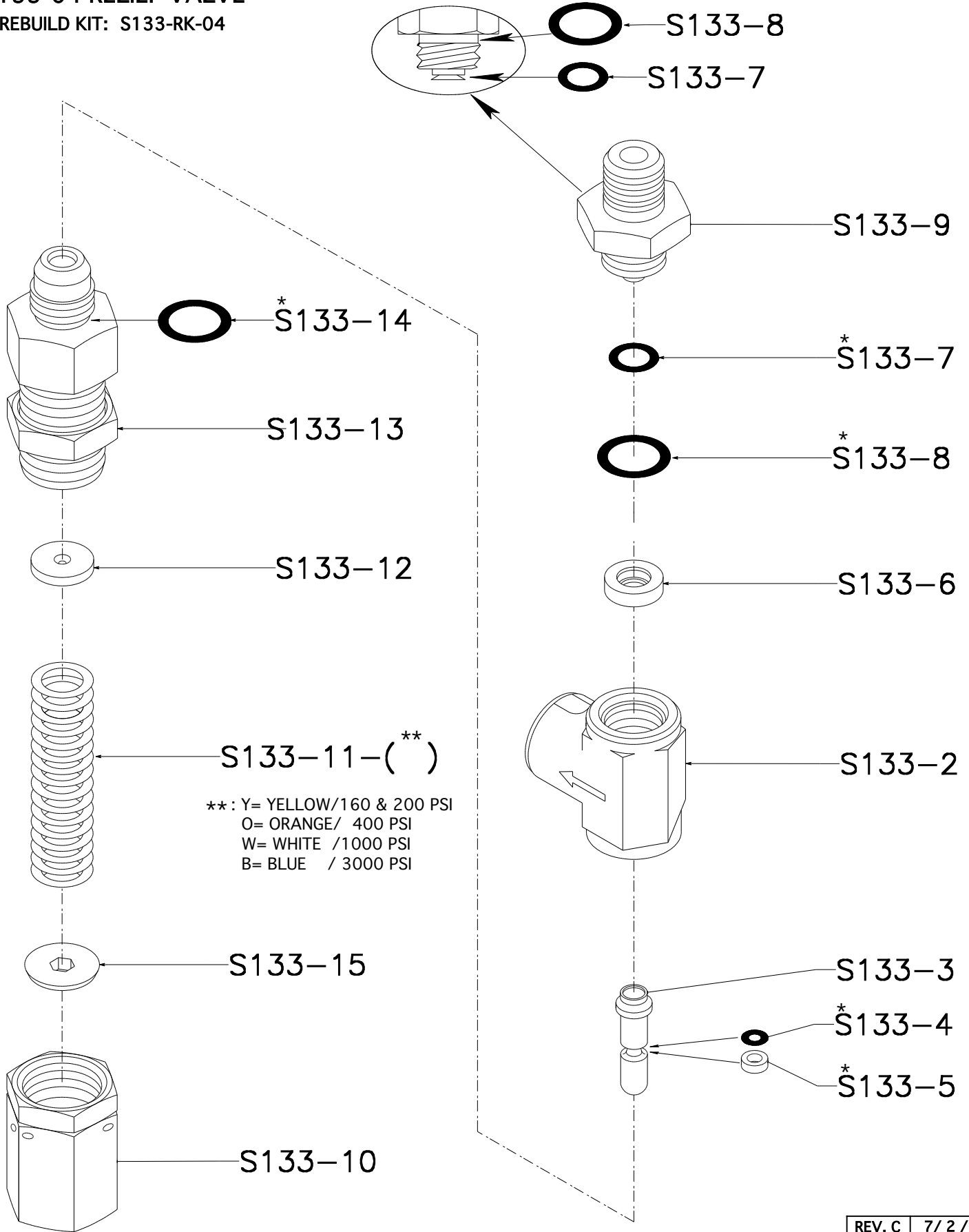
S133-04RK - RELIEF VALVE



REV. C	8 / 31 / 06
REV. B	8 / 3 / 04
REV. A	10 / 15 / 01

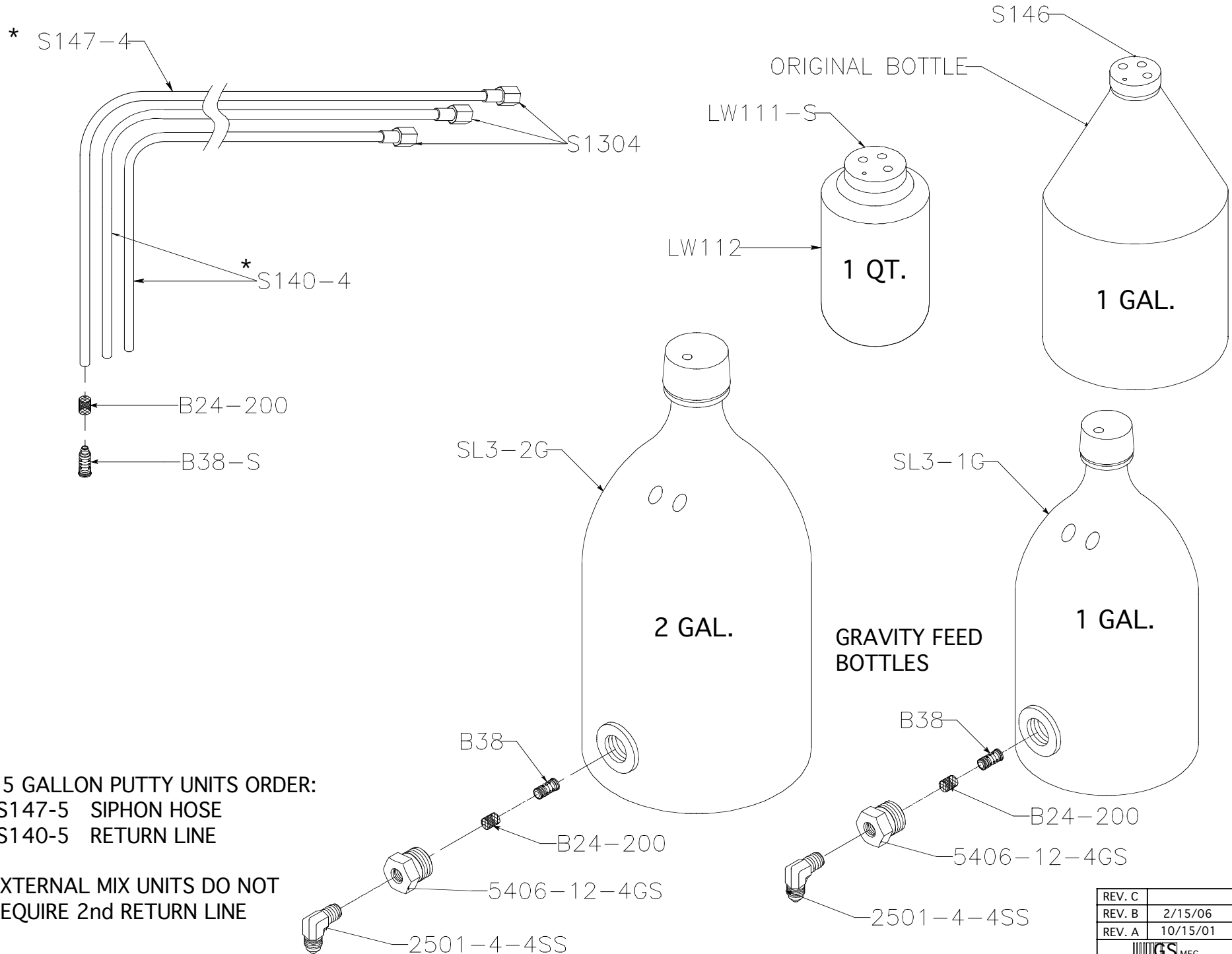
S133-04 RELIEF VALVE

* REBUILD KIT: S133-RK-04



REV. C	7/ 2 / 09
REV. B	10/8/ 08
REV. A	5/ 5 / 08
GS MFG	8 / 3 / 04

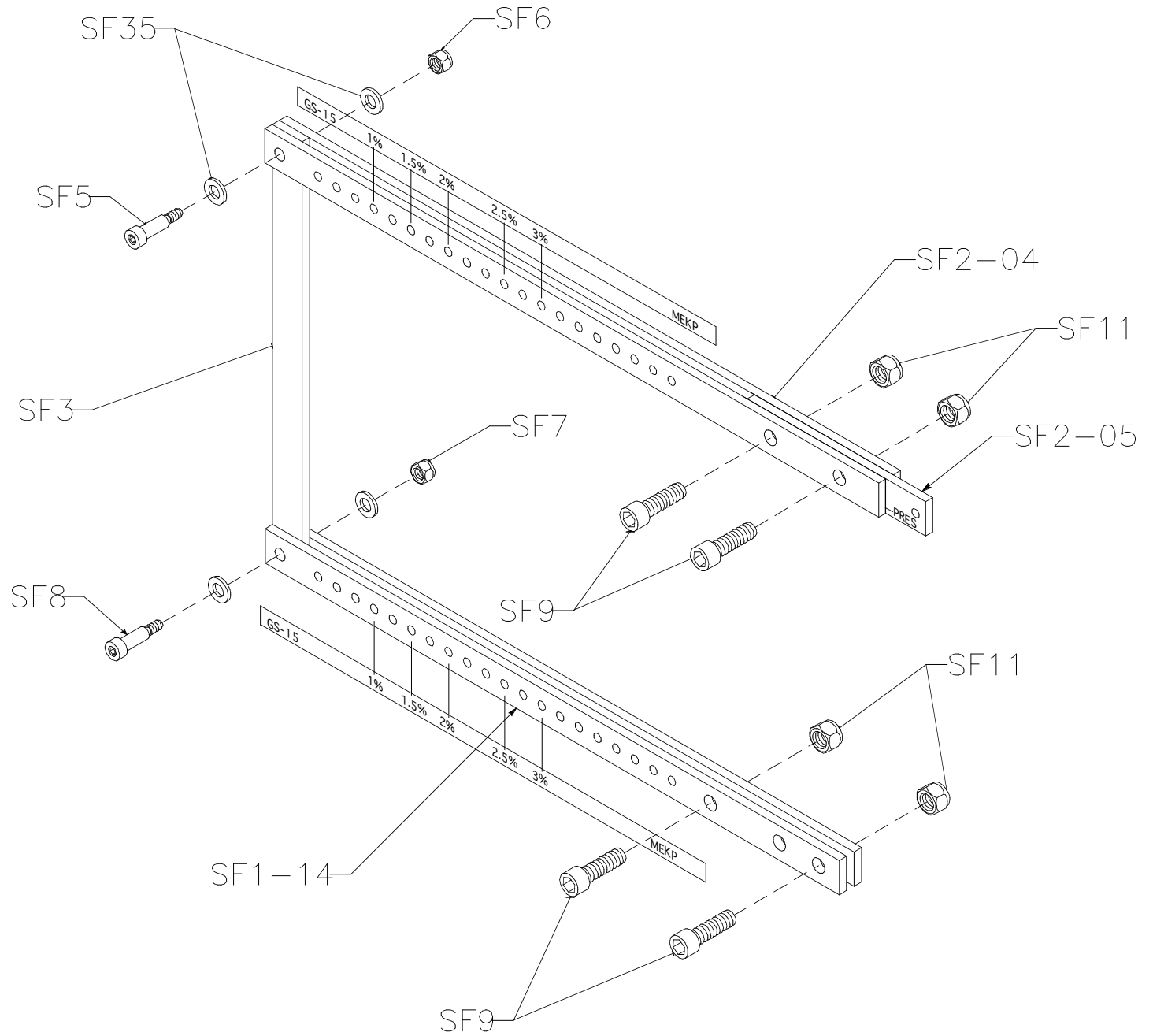
MEKP SIPHON HOSES / BOTTLES




REV. C	
REV. B	2/15/06
REV. A	10/15/01

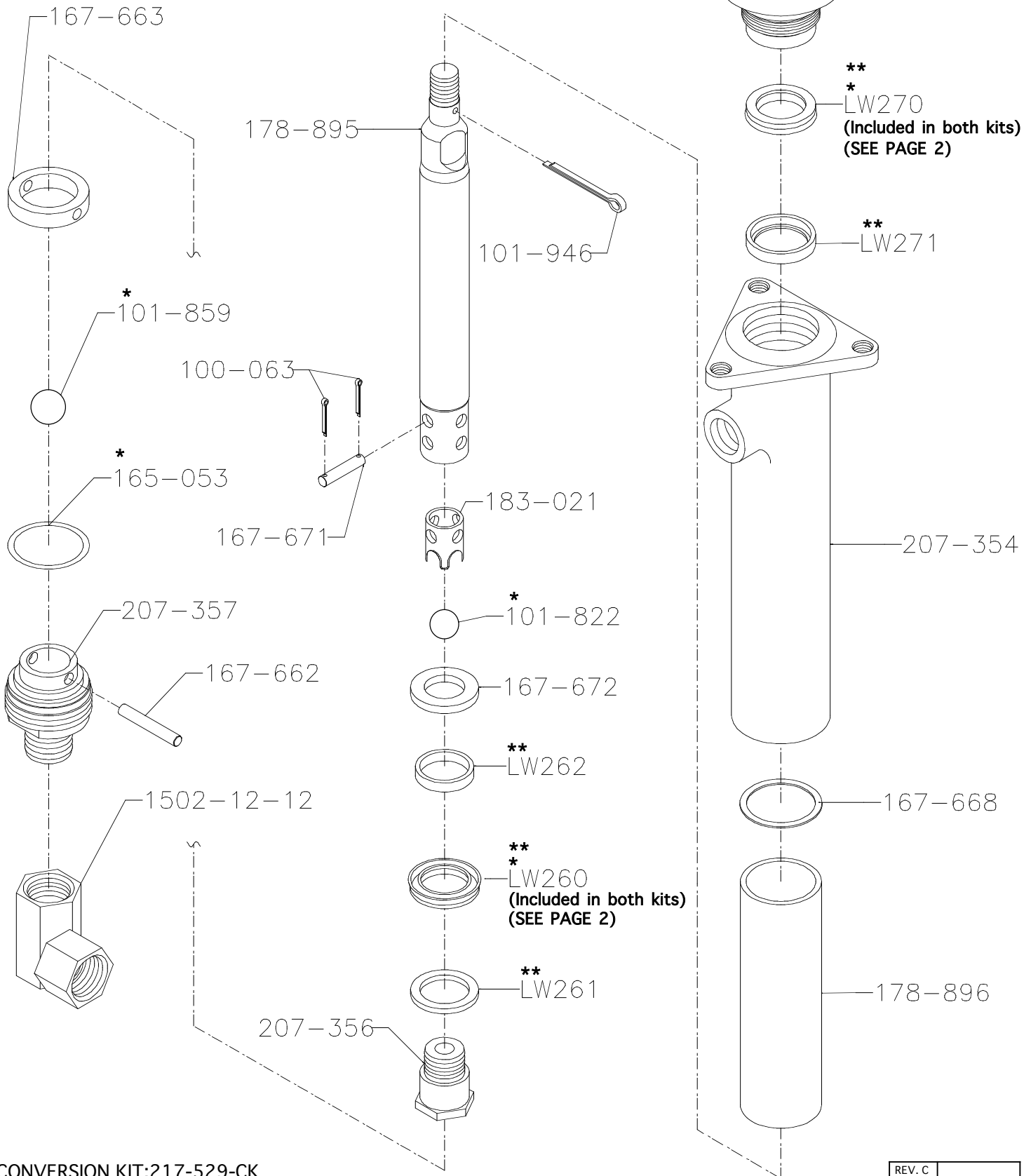
S200-SLAVE ARM ASSEMBLY

15:1 AND 10:1




REV. C	
REV. B	12/18/05
REV. A	5 /20/03
	

GRACO PUMP 217-529-GS (CUP CONVERSION)



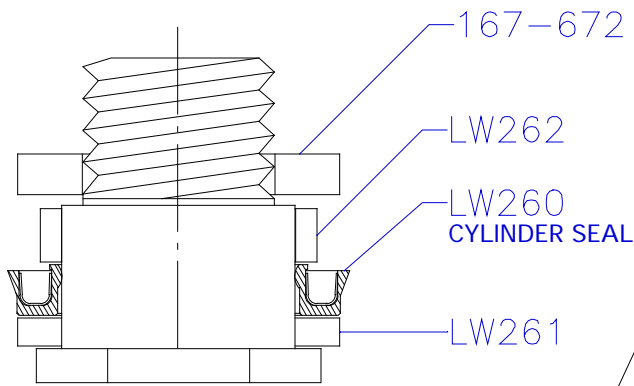
** CONVERSION KIT:217-529-CK
* REPAIR KIT:235-634-01

REV. C	
REV. B	
REV. A	9 / 3 / 08
 MFG	11 / 25 / 03

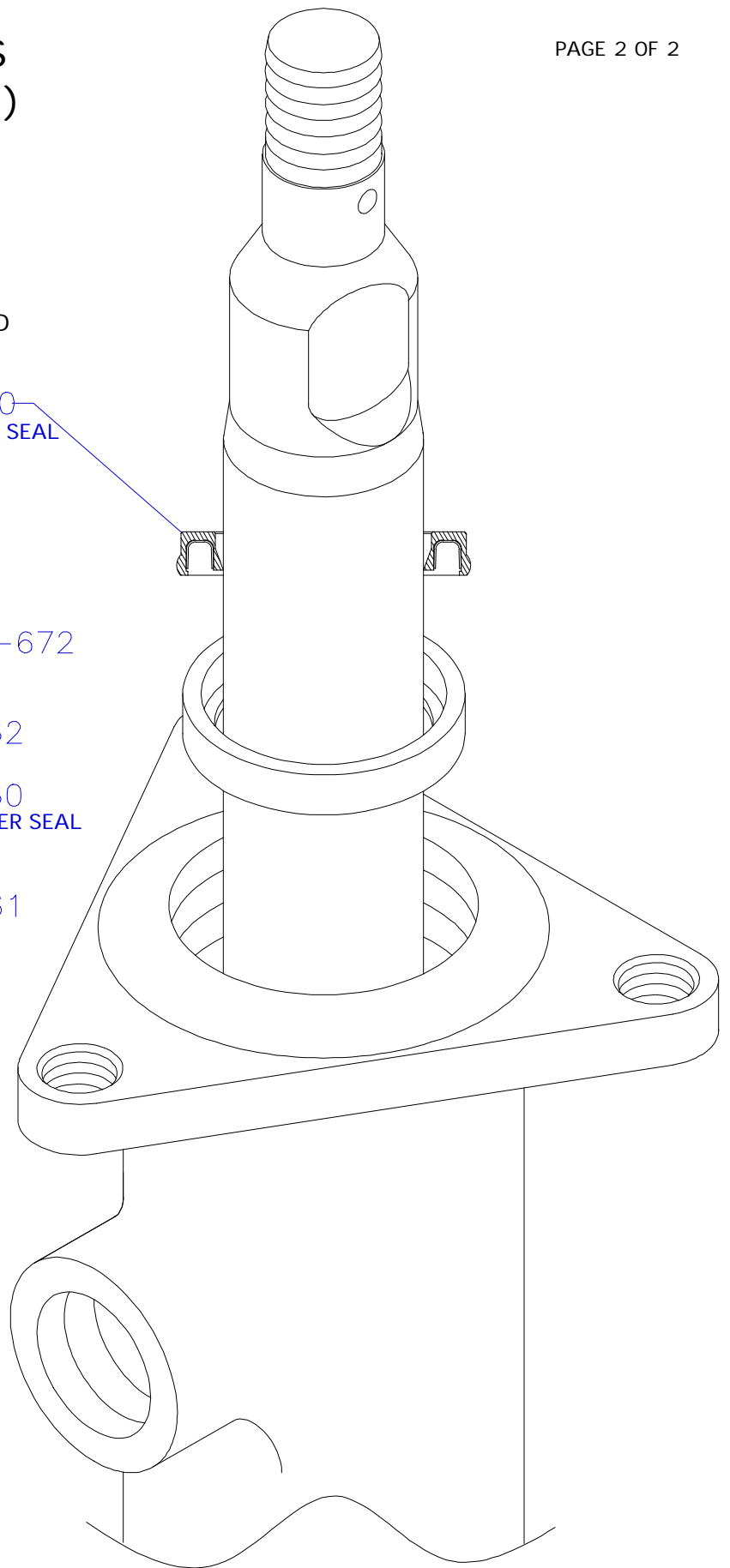
GRACO PUMP 217-529-GS (CUP SEAL INSTALLATION)

THE THROAT SEAL HAS A SHARP, POINTED LIP IN THE I.D - FACING DOWN

LW270
THROAT SEAL

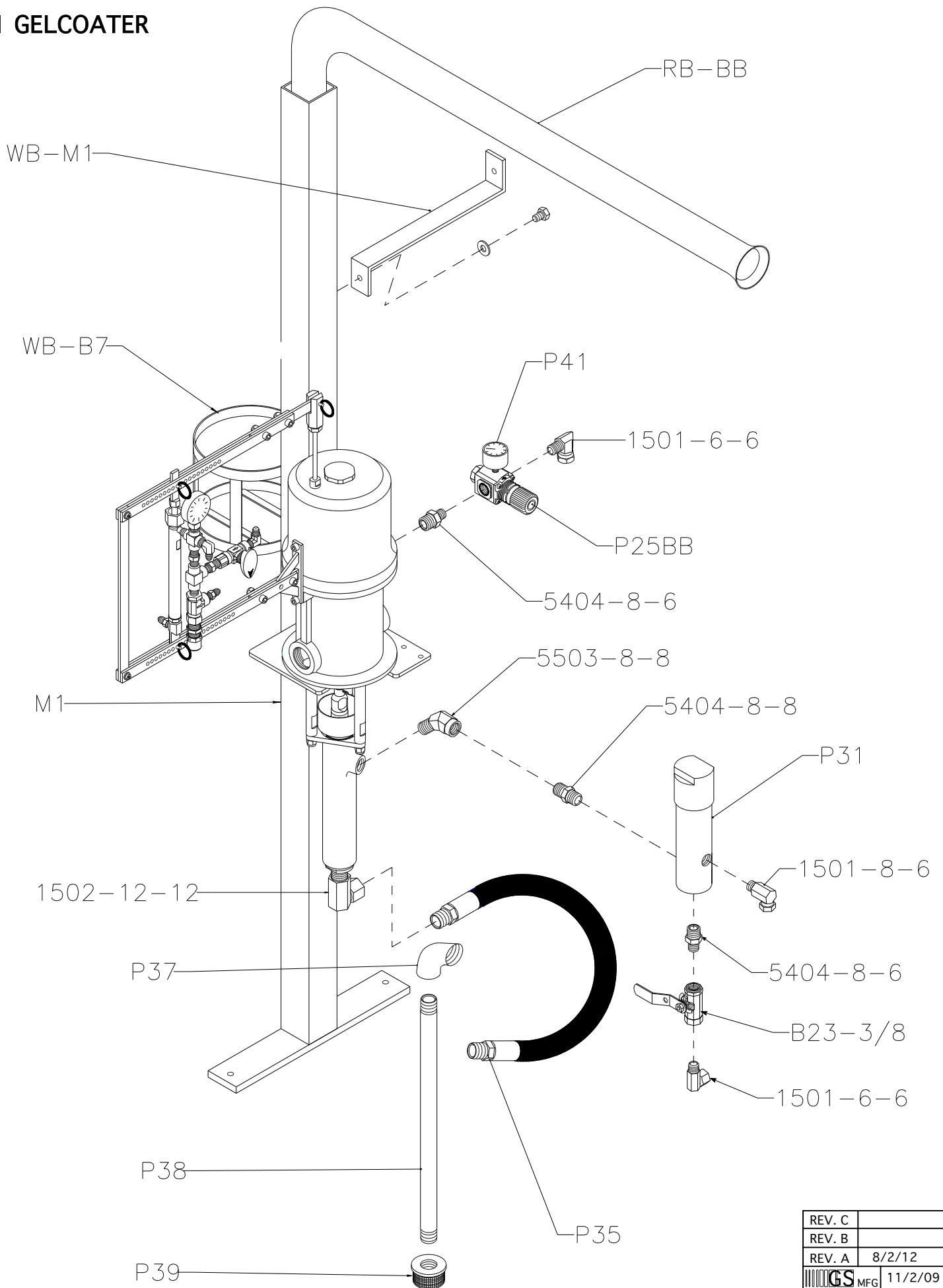



THE CYLINDER SEAL HAS A SHARP, POINTED LIP ON THE O.D - FACING UP



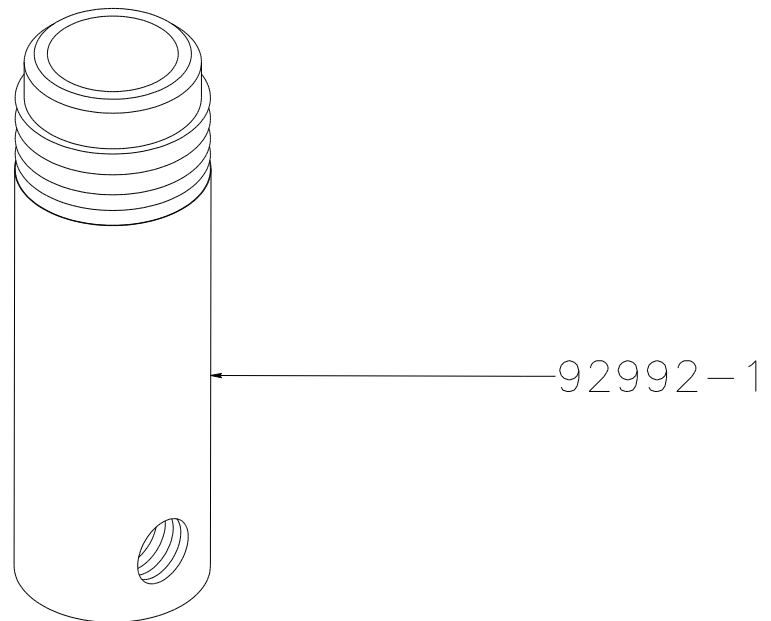
REV. C	
REV. B	
REV. A	11/25/03


15-1 GELCOATER



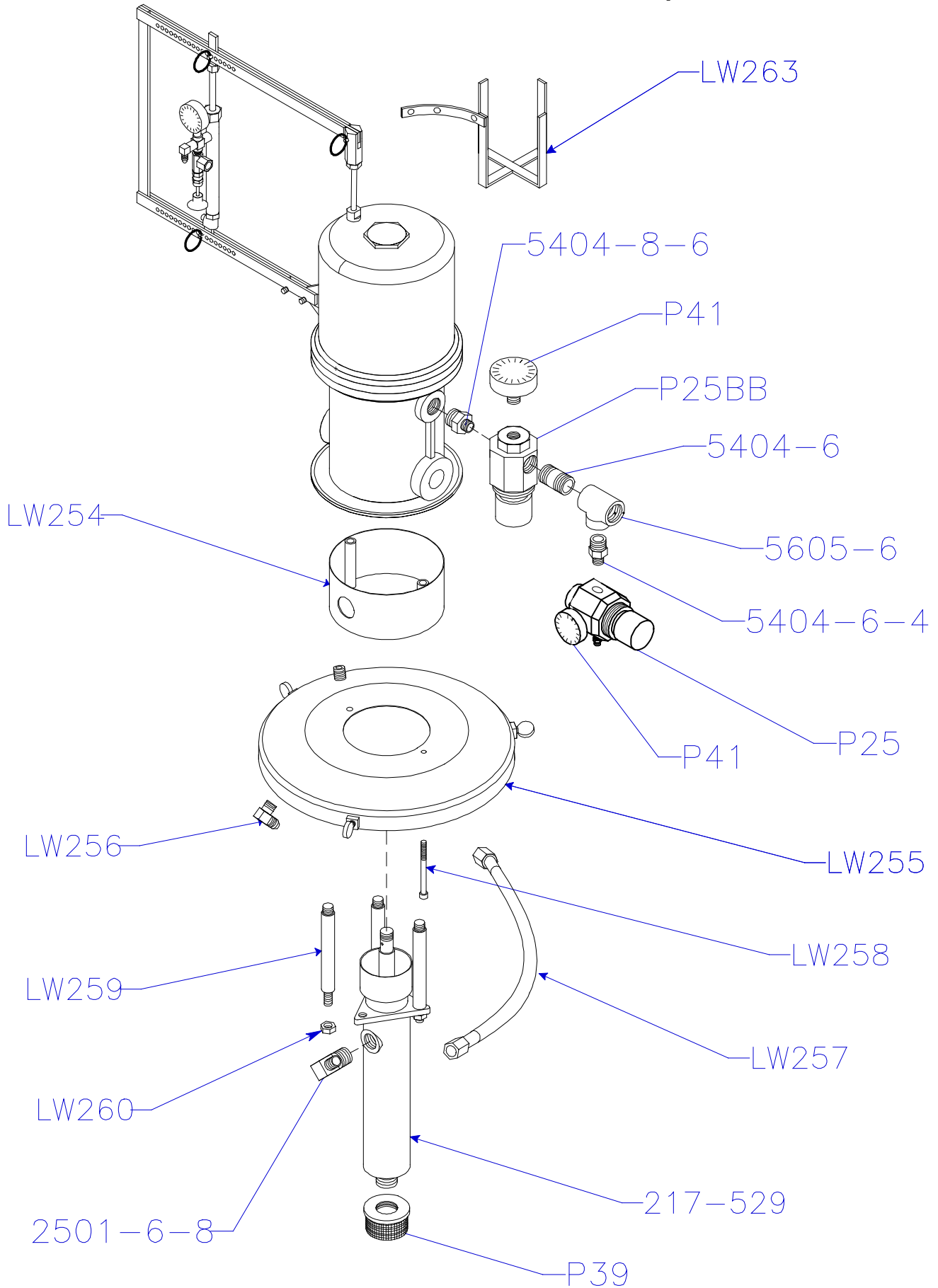
REV. C	
REV. B	
REV. A	8/2/12
 GS MFG	11/2/09

P31 MATERIAL FILTER

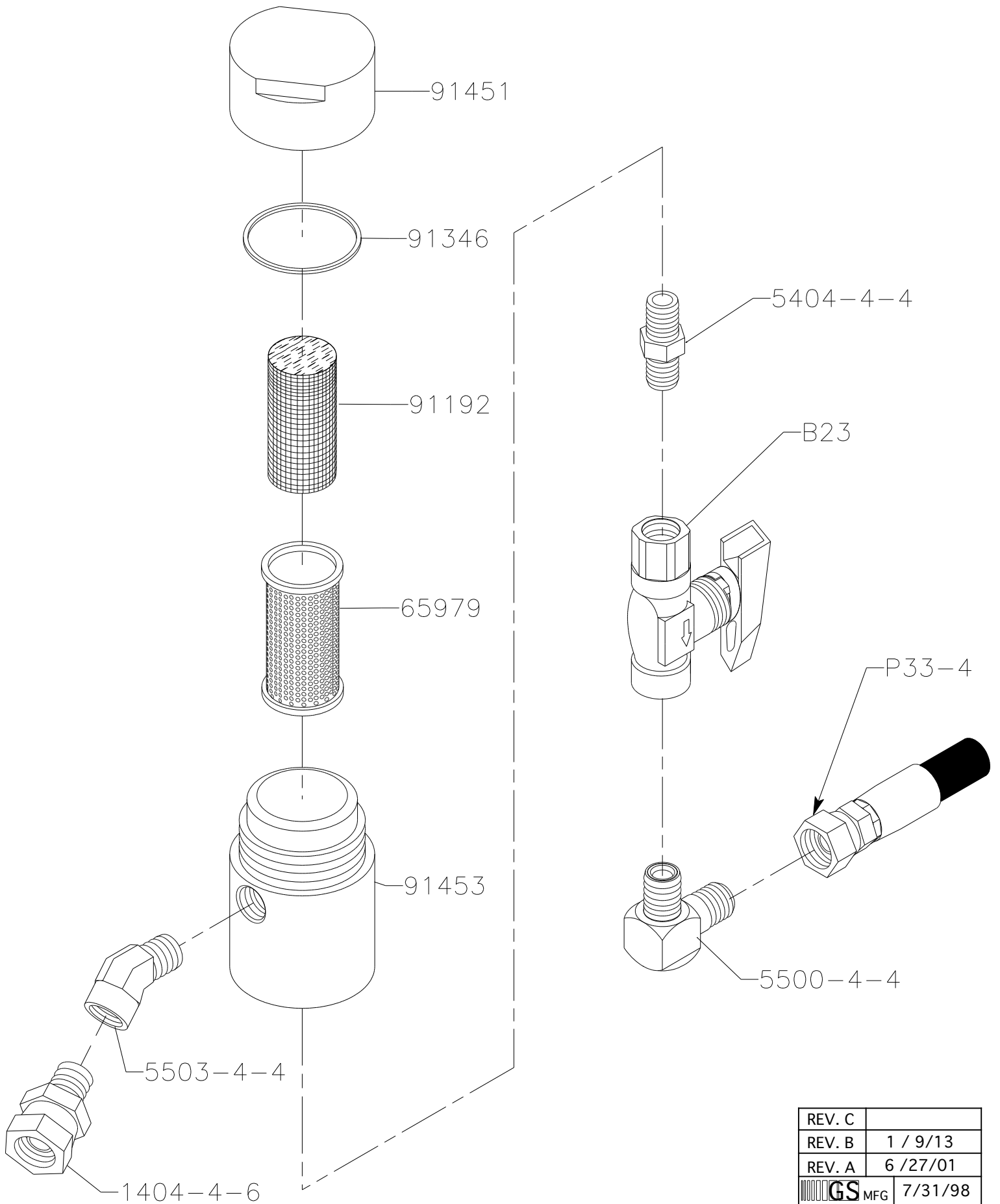



REV. C	
REV. B	7/23/13
REV. A	6/27/00
 GS MFG	7/31/97

LWA-97 Gel Coat Pump

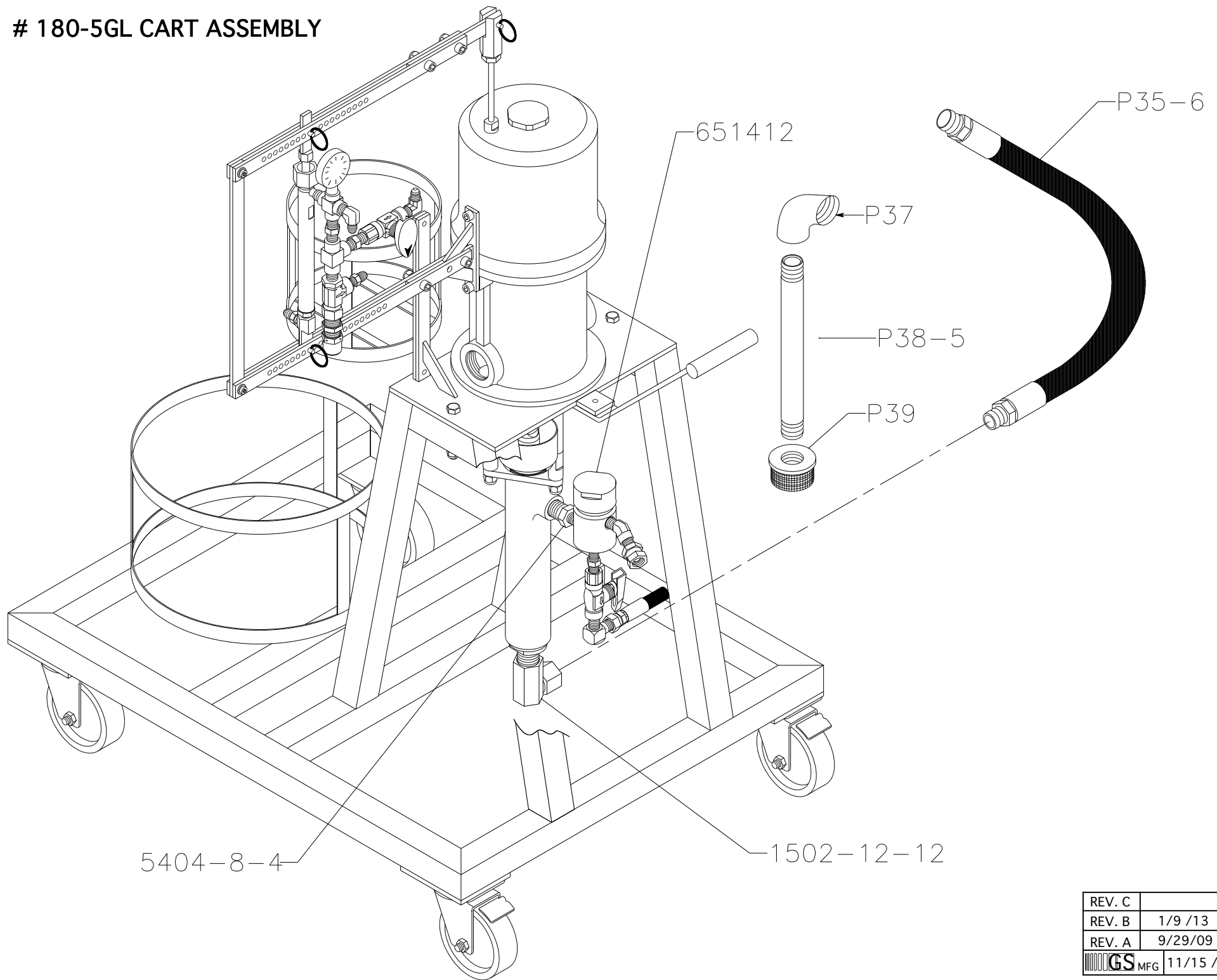



651412 FILTER ASSEMBLY



REV. C	
REV. B	1 / 9/13
REV. A	6 / 27/01
 MFG	7/31/98

180-5GL CART ASSEMBLY



REV. C		5
REV. B	1/9 /13	
REV. A	9/29/09	
 GS MFG	11/15 /04	