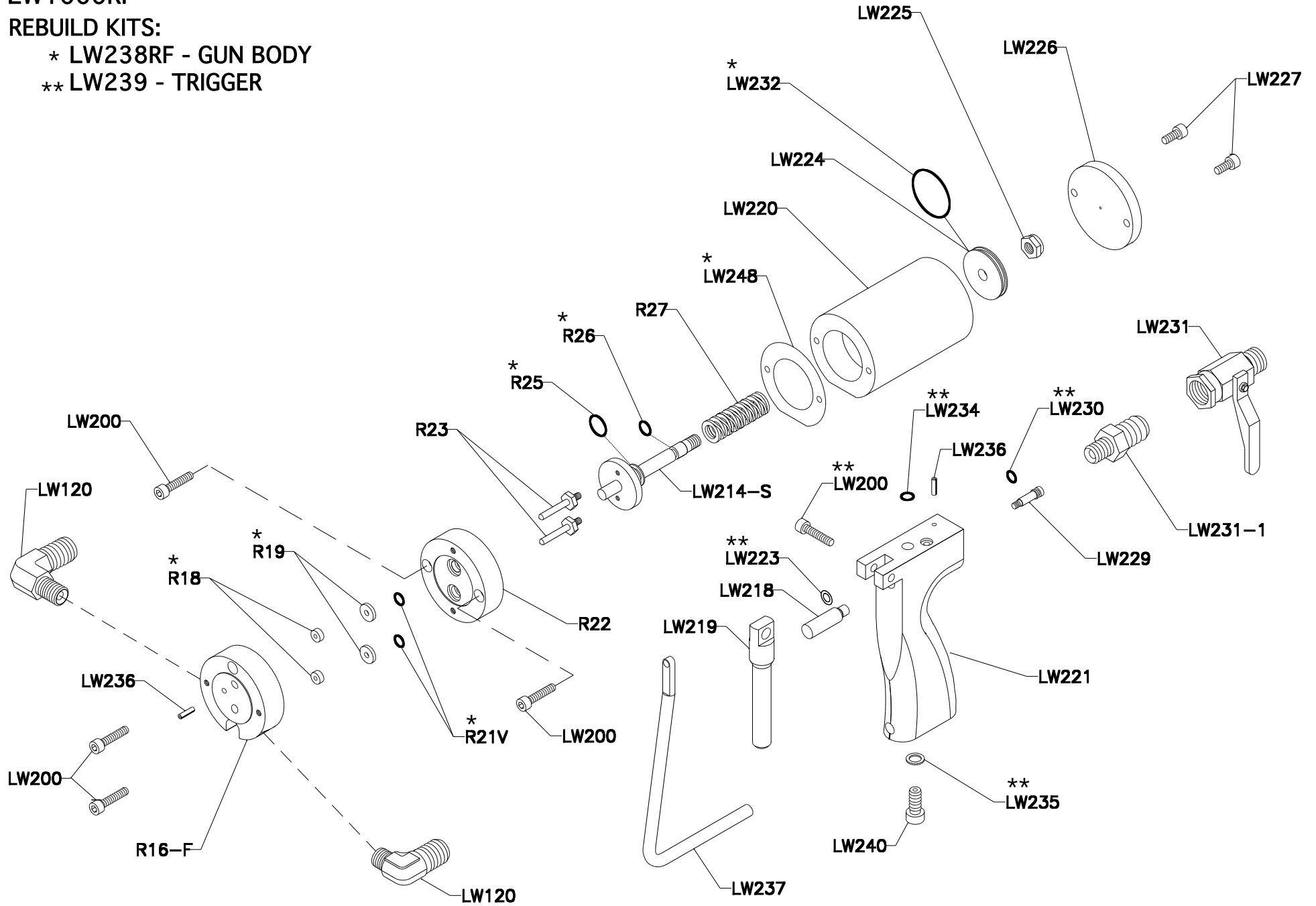


# LW1000RF

## REBUILD KITS:

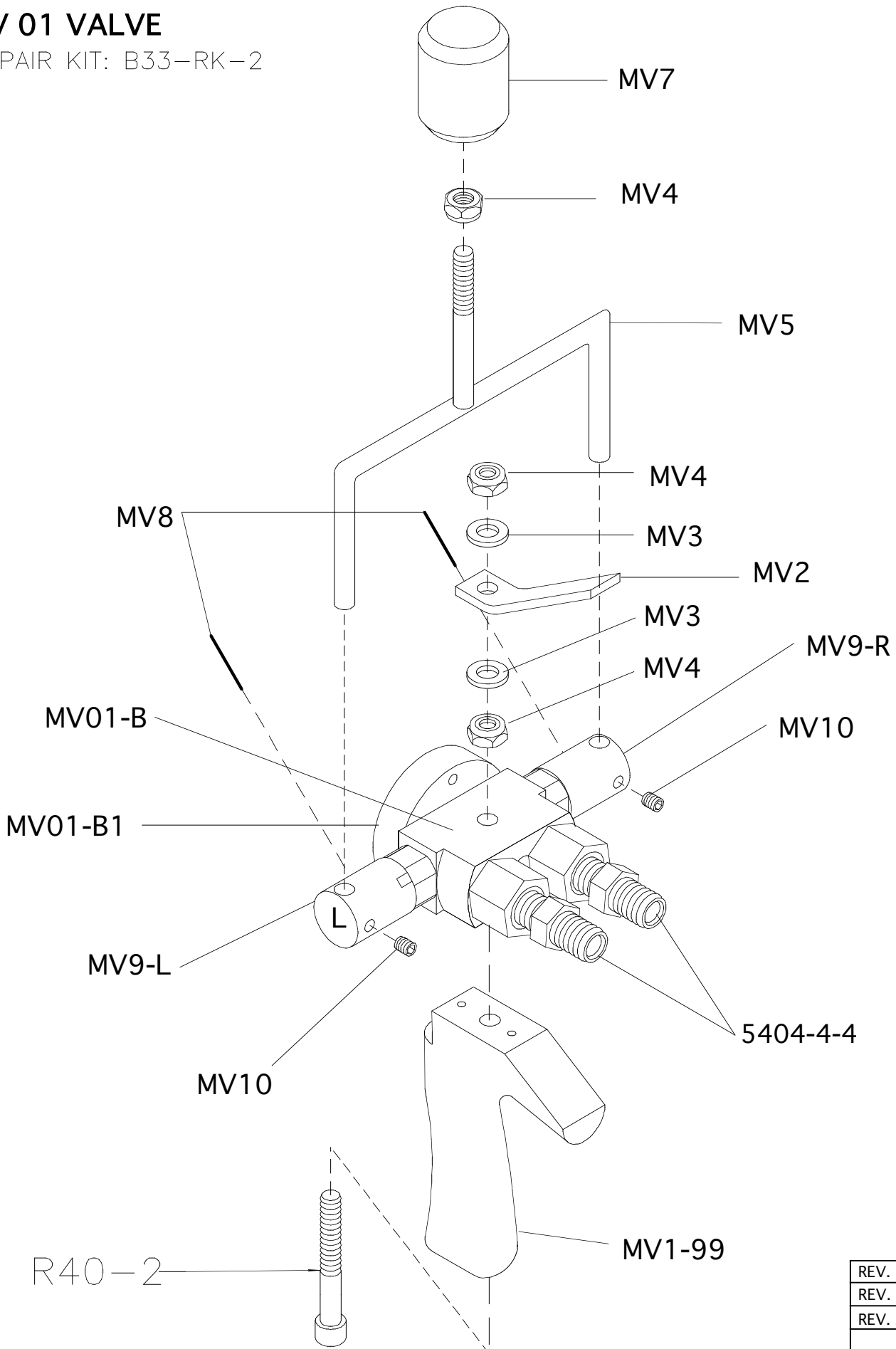
- \* LW238RF - GUN BODY
- \*\* LW239 - TRIGGER



REV. C	
REV. B	
REV. A	5/23 / 06
GS MFG	6/ 25/ 04

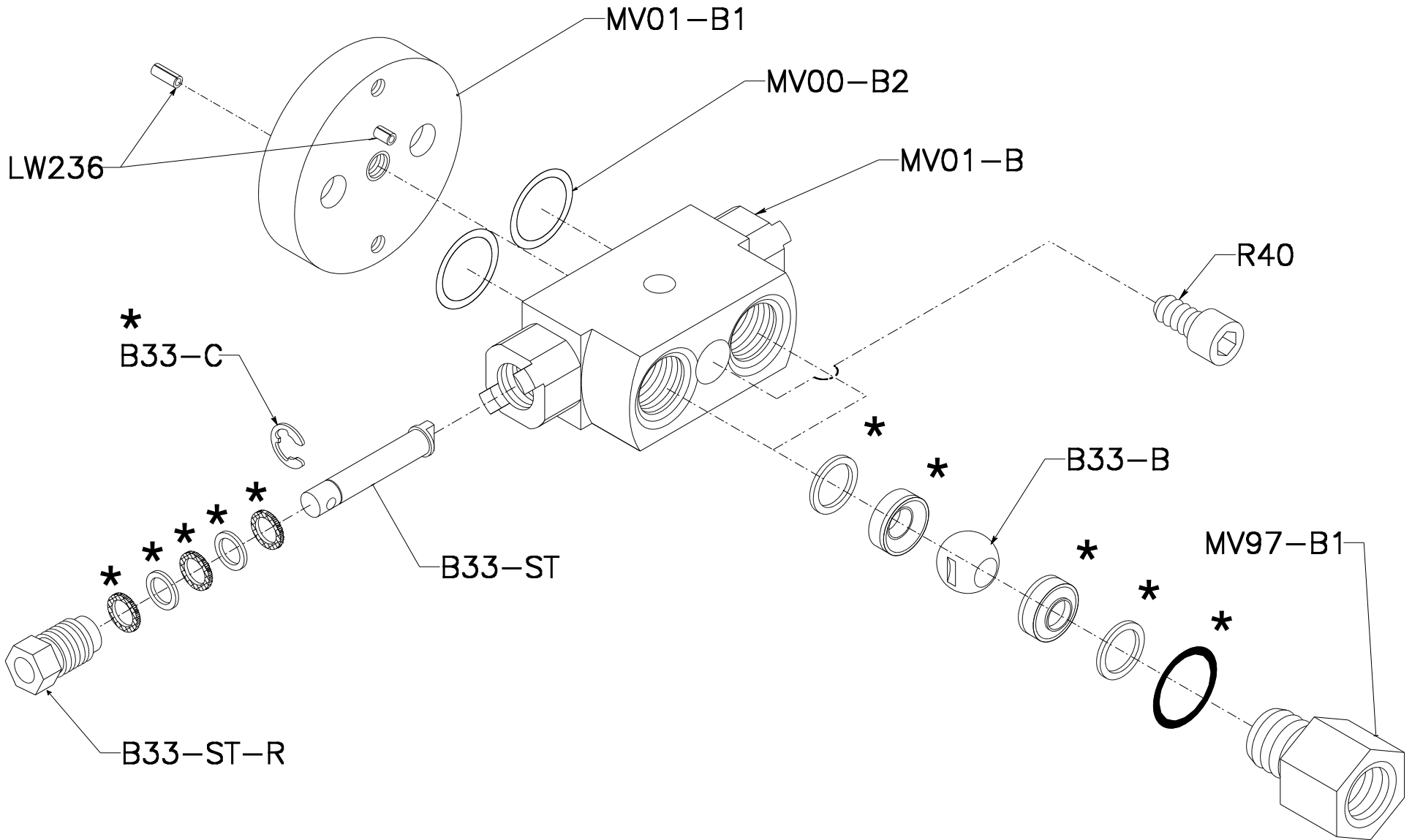
# MV 01 VALVE

REPAIR KIT: B33-RK-2



REV. C	12/29/08
REV. B	11/25/03
REV. A	10/15/01

# MV01-BA BODY ASSEMBLY



\*: REPAIR KIT: B33-RK-2

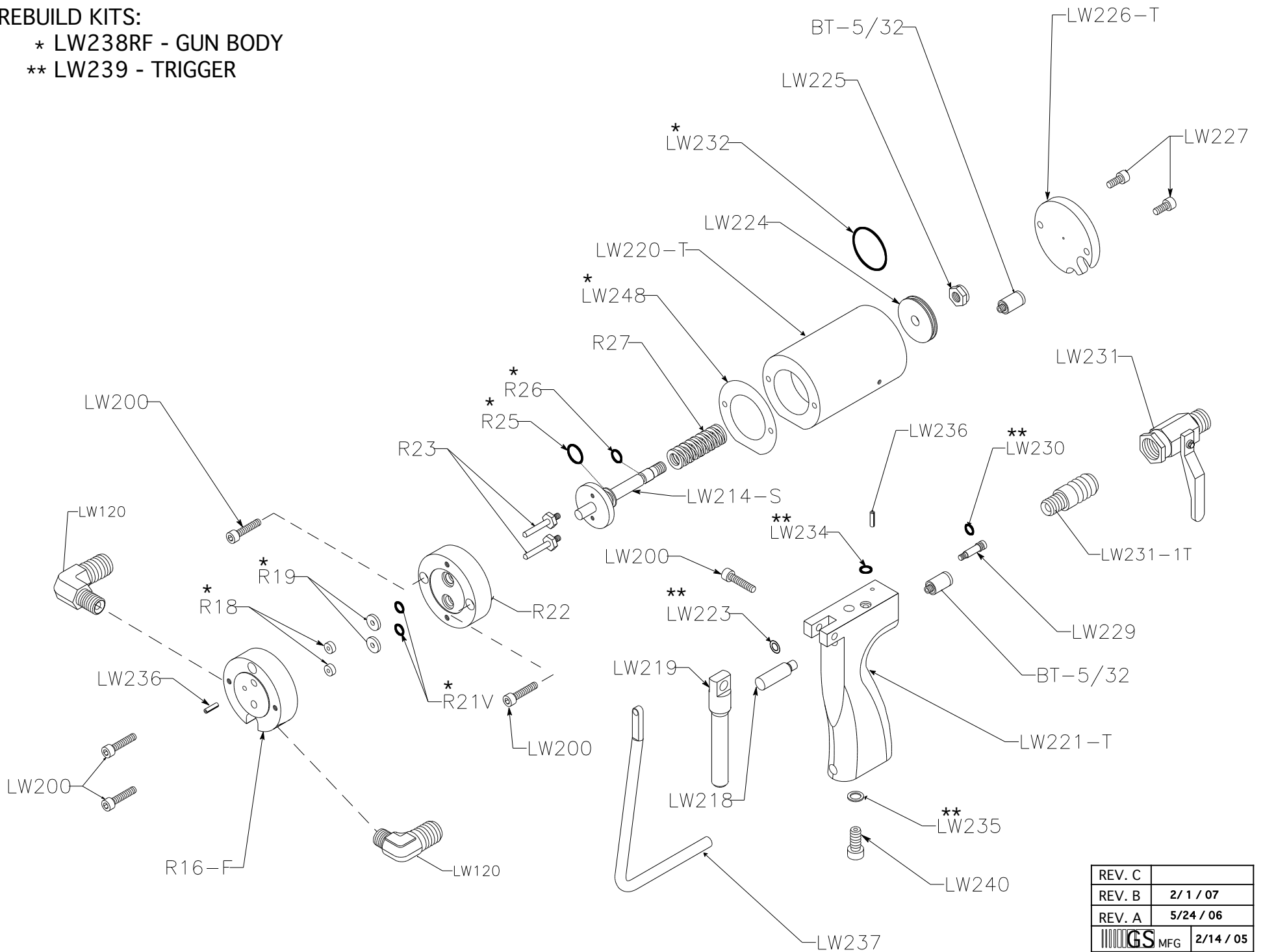
REV. C	1/ 5 /09
REV. B	7/11/07
REV. A	11/25/03


# LW1000RF-T

## REBUILD KITS:

\* LW238RF - GUN BODY

\*\* LW239 - TRIGGER



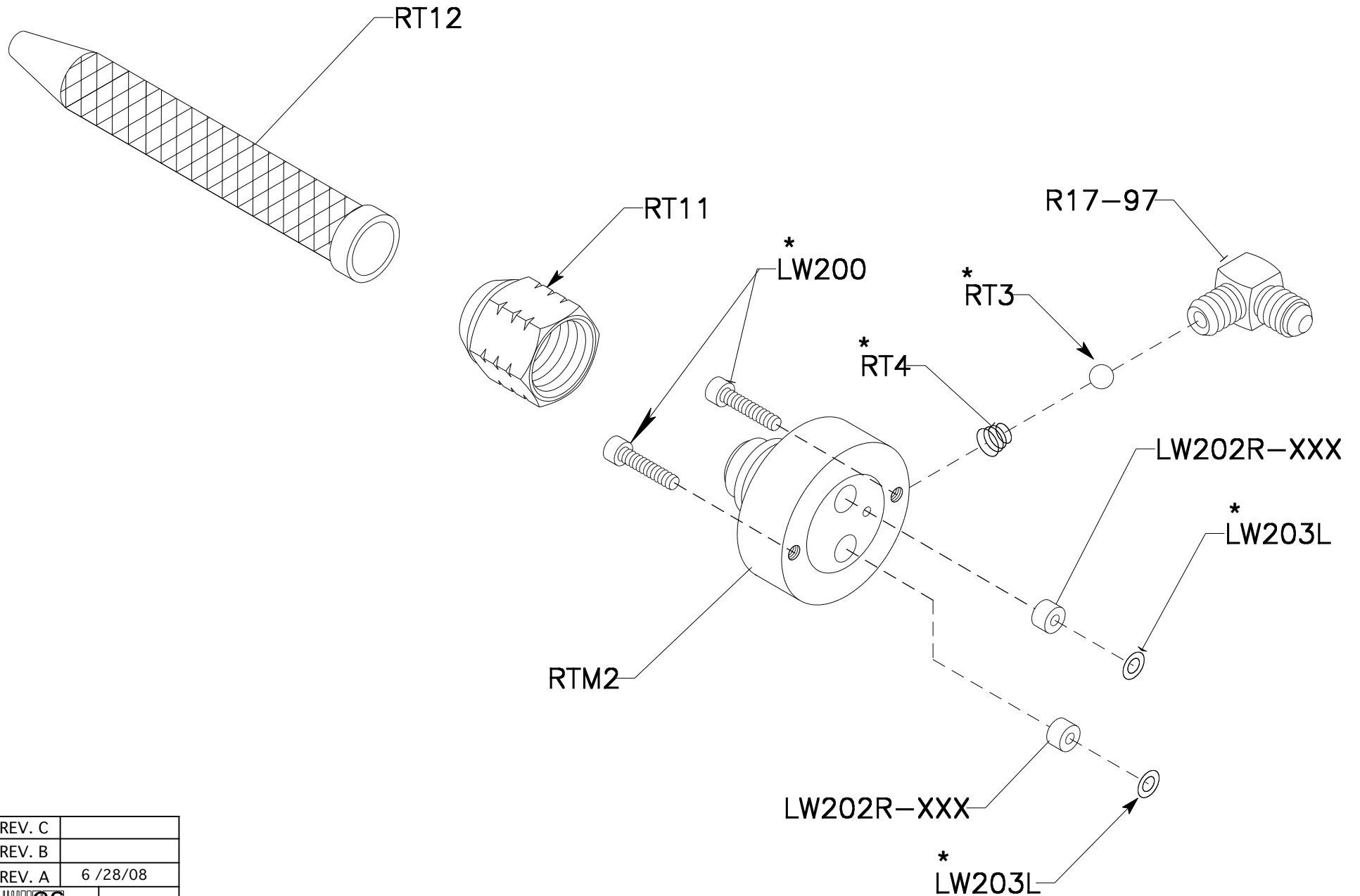
REV. C	
REV. B	2/1 / 07
REV. A	5/24 / 06
 GS MFG	2/14 / 05


# RTM2-A

1-1 NOZZLE

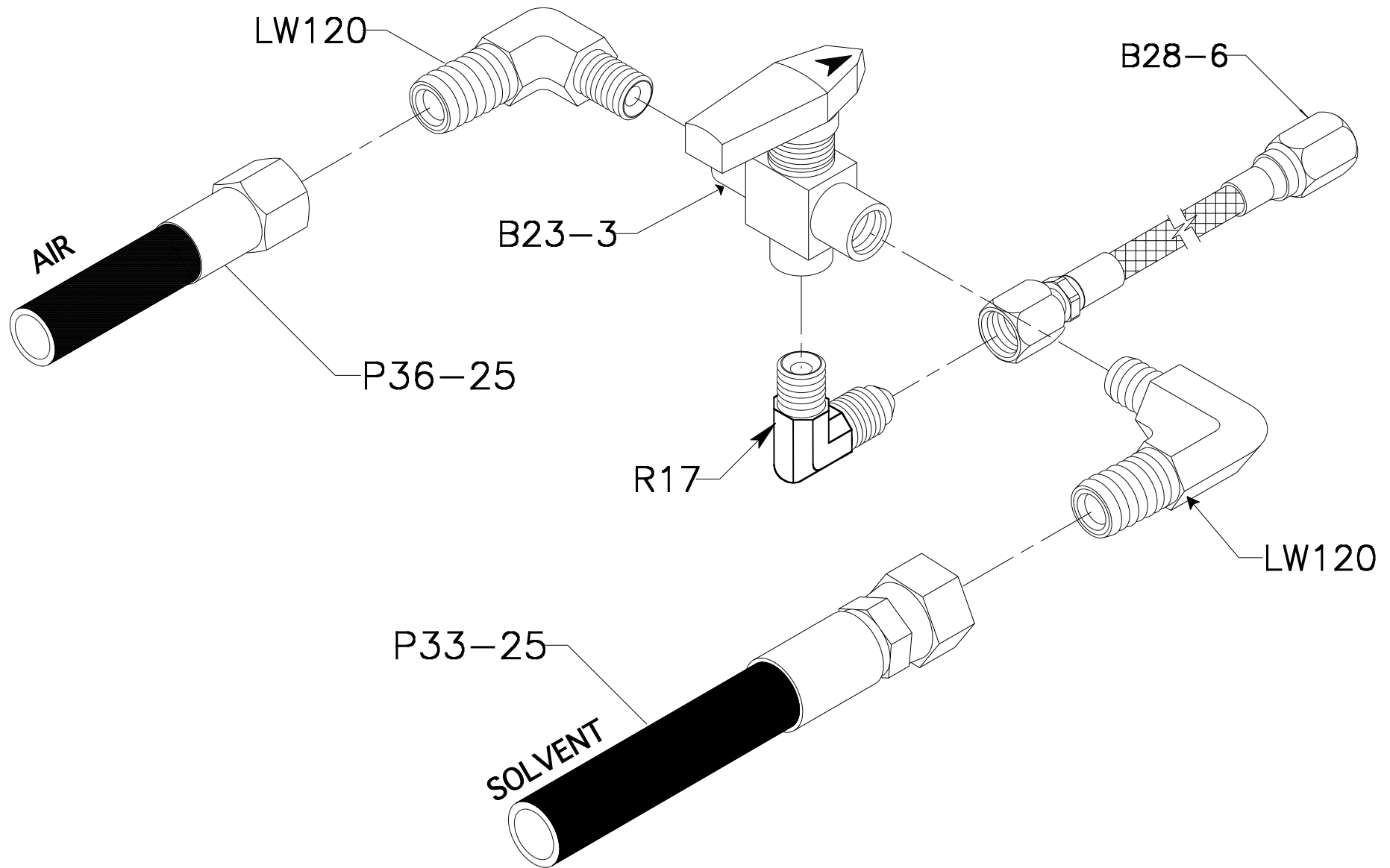
\* :RTM2-RK


\* :INDICATES PARTS INCLUDED IN KIT



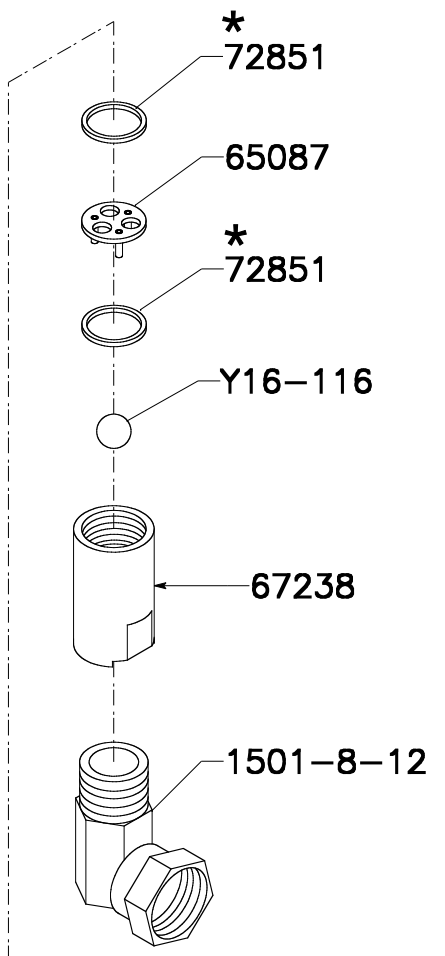
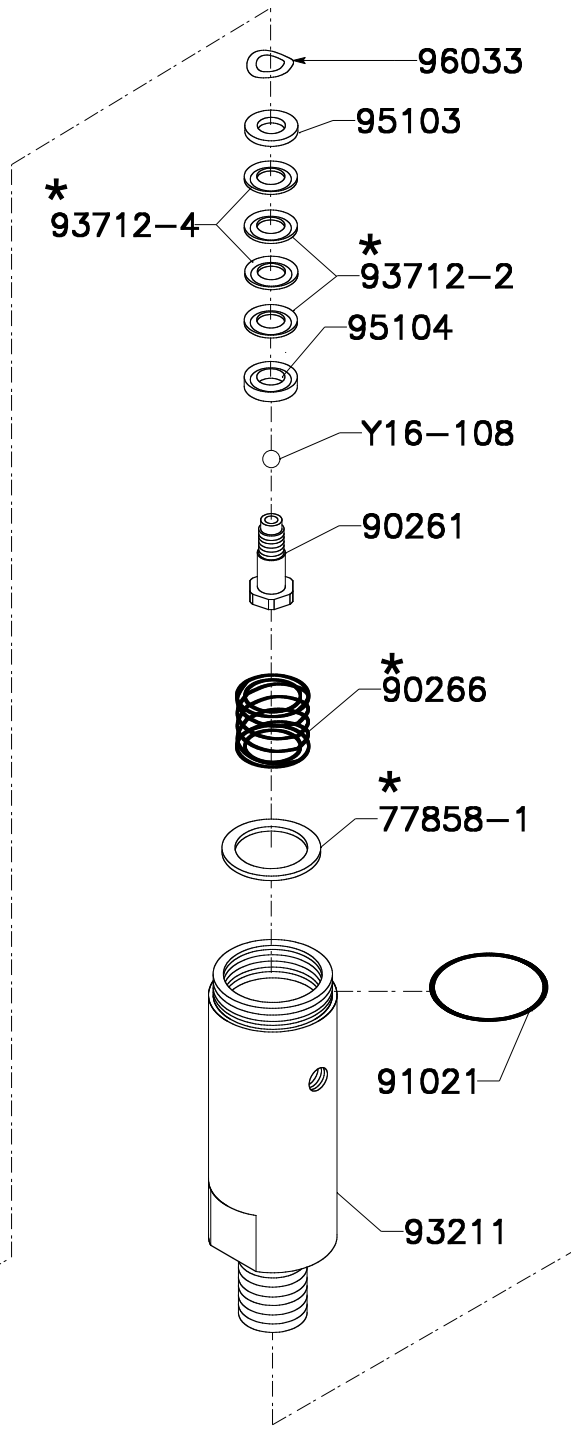
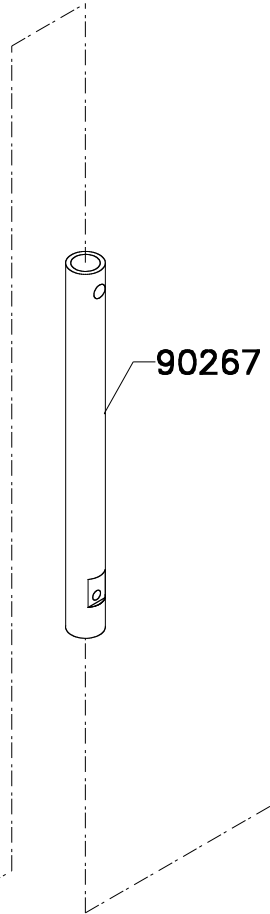
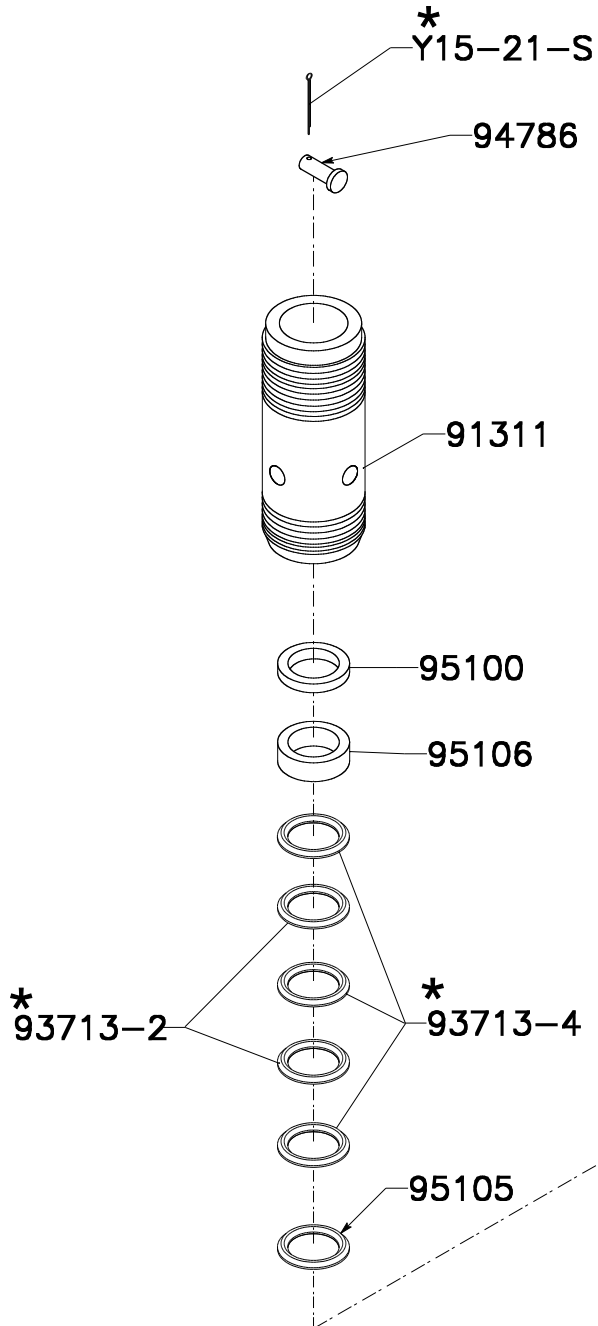
REV. C	
REV. B	
REV. A	6 /28/08
 MFG	12/14/00

# PURGE VALVE ASSEMBLY



REV. C	
REV. B	2/22/10
REV. A	6/20/00
 GS MFG	9/12/97

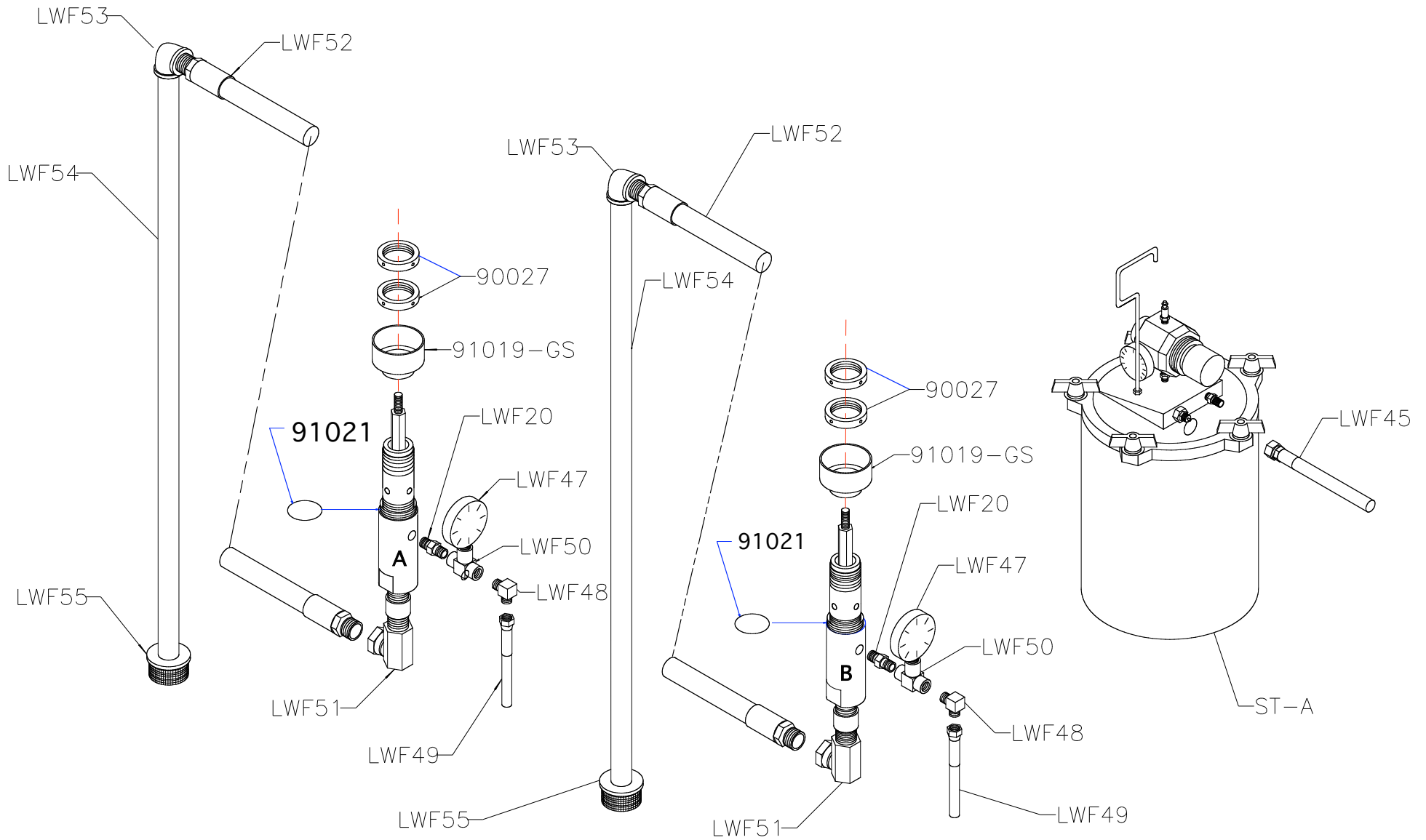
66066-00



\* REBUILD KIT:  
637006-97

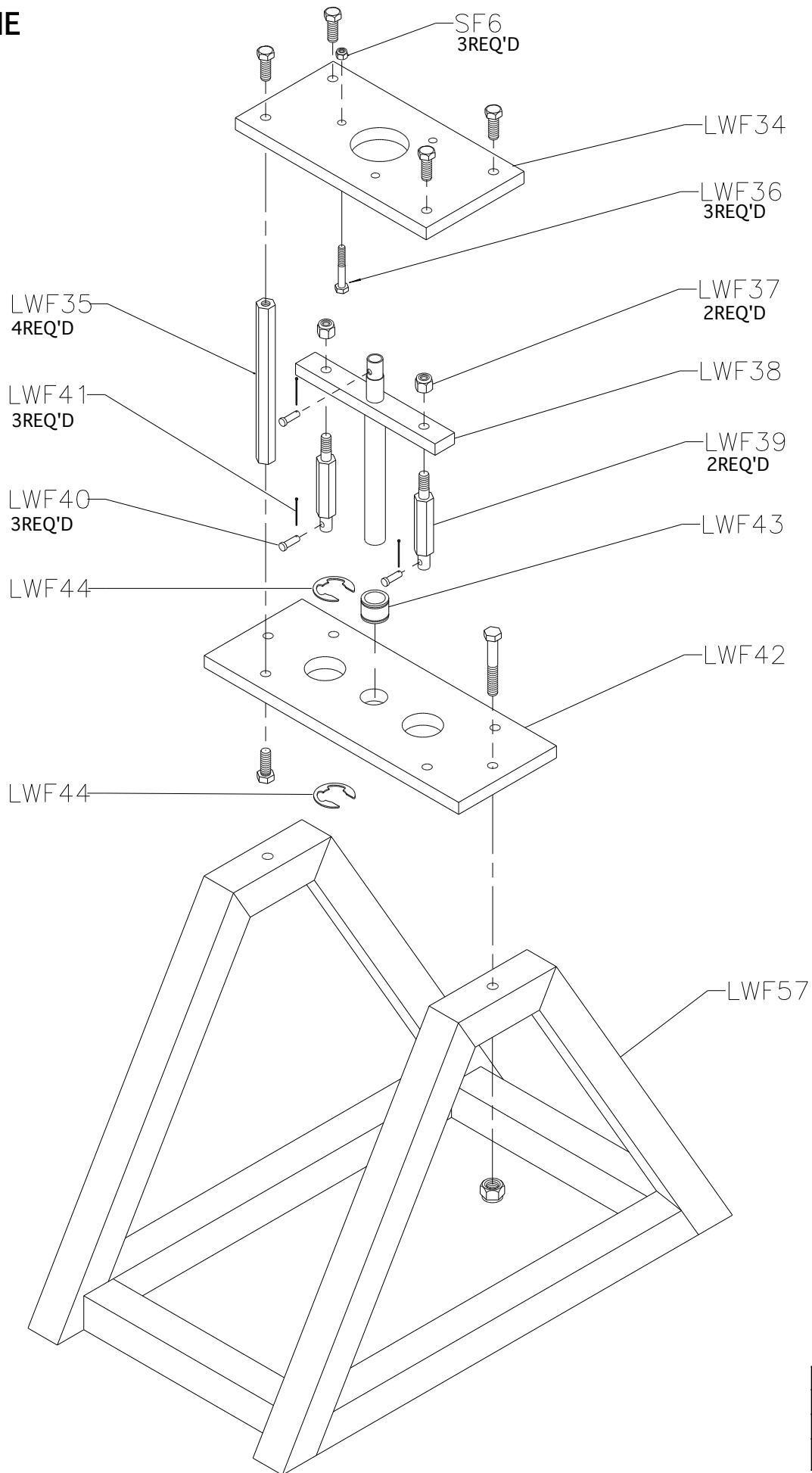
REV. C	
REV. B	3 / 21 / 07
REV. A	1 / 22 / 03
WOODS MFG	


# LWF -Pumps, Siphon, Tank



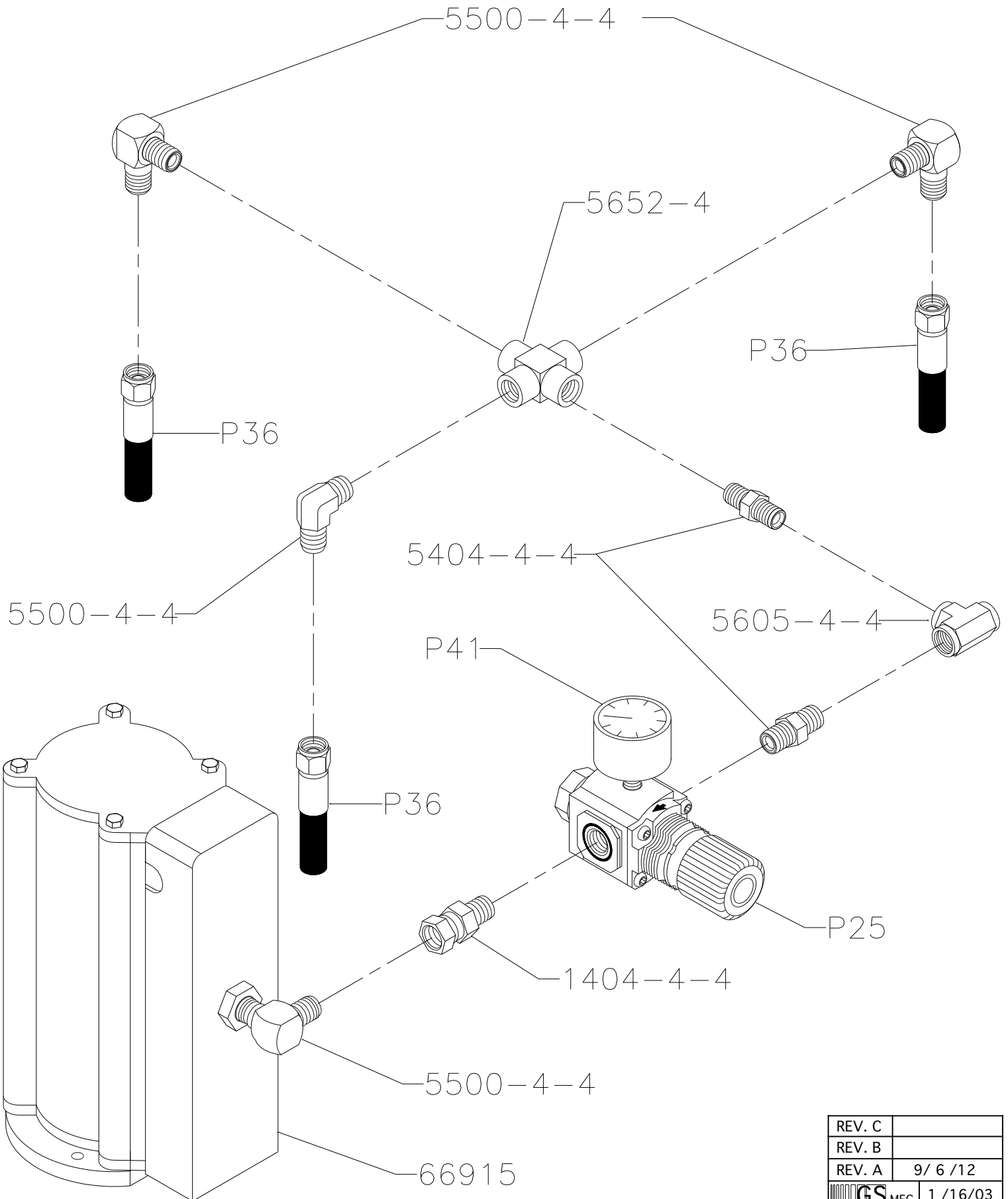



# LWF FRAME



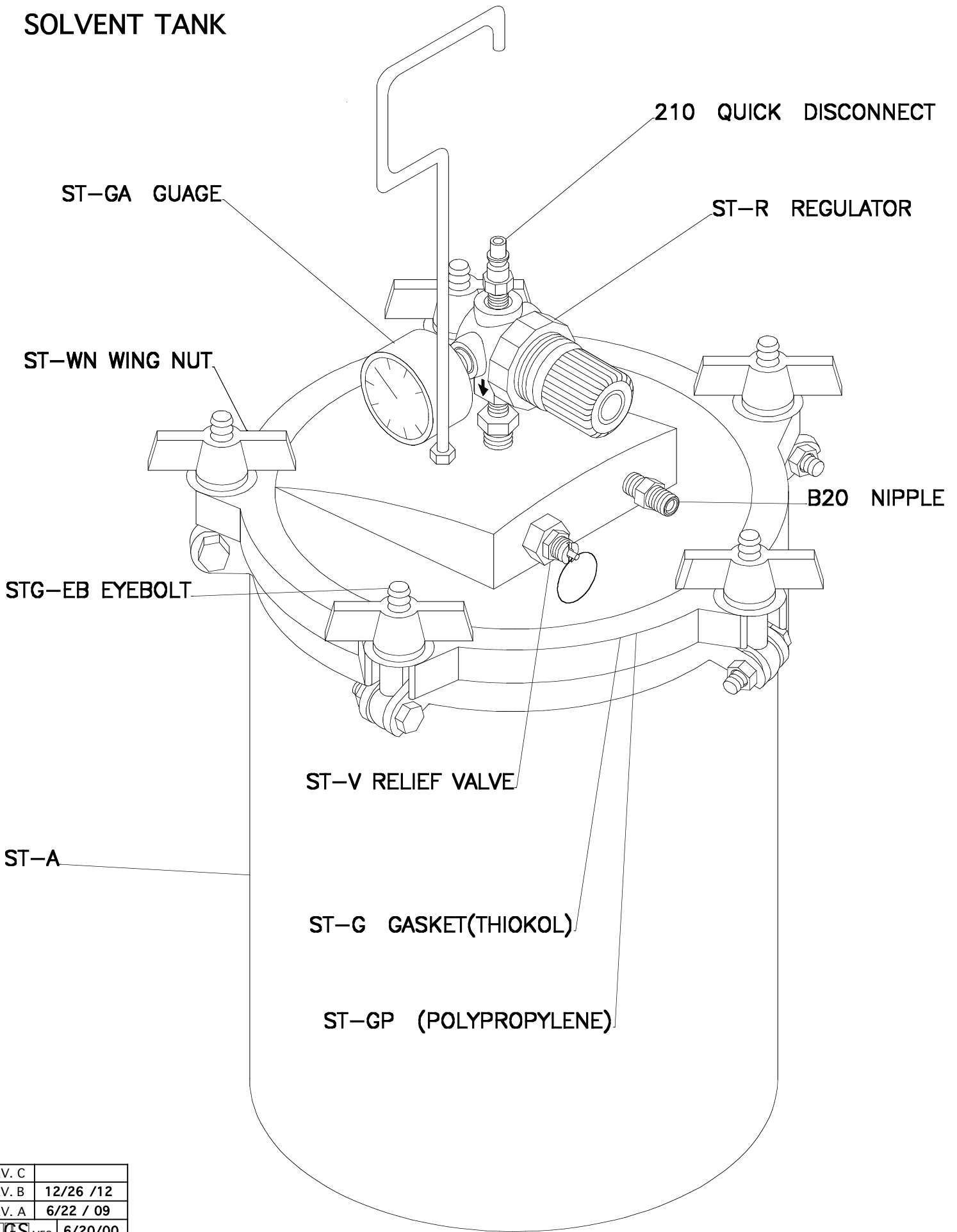
REV. C	
REV. B	4 /30/09
REV. A	8 /28/07
 GS MFG	8 /4/00


# LWF AIR MOTOR/ AIR PURGE



REV. C	
REV. B	
REV. A	9/ 6 /12
 GS MFG	1 /16/03

# SOLVENT TANK



REV. C	
REV. B	12/26 /12
REV. A	6/22 / 09
 GS MFG	6/20/00