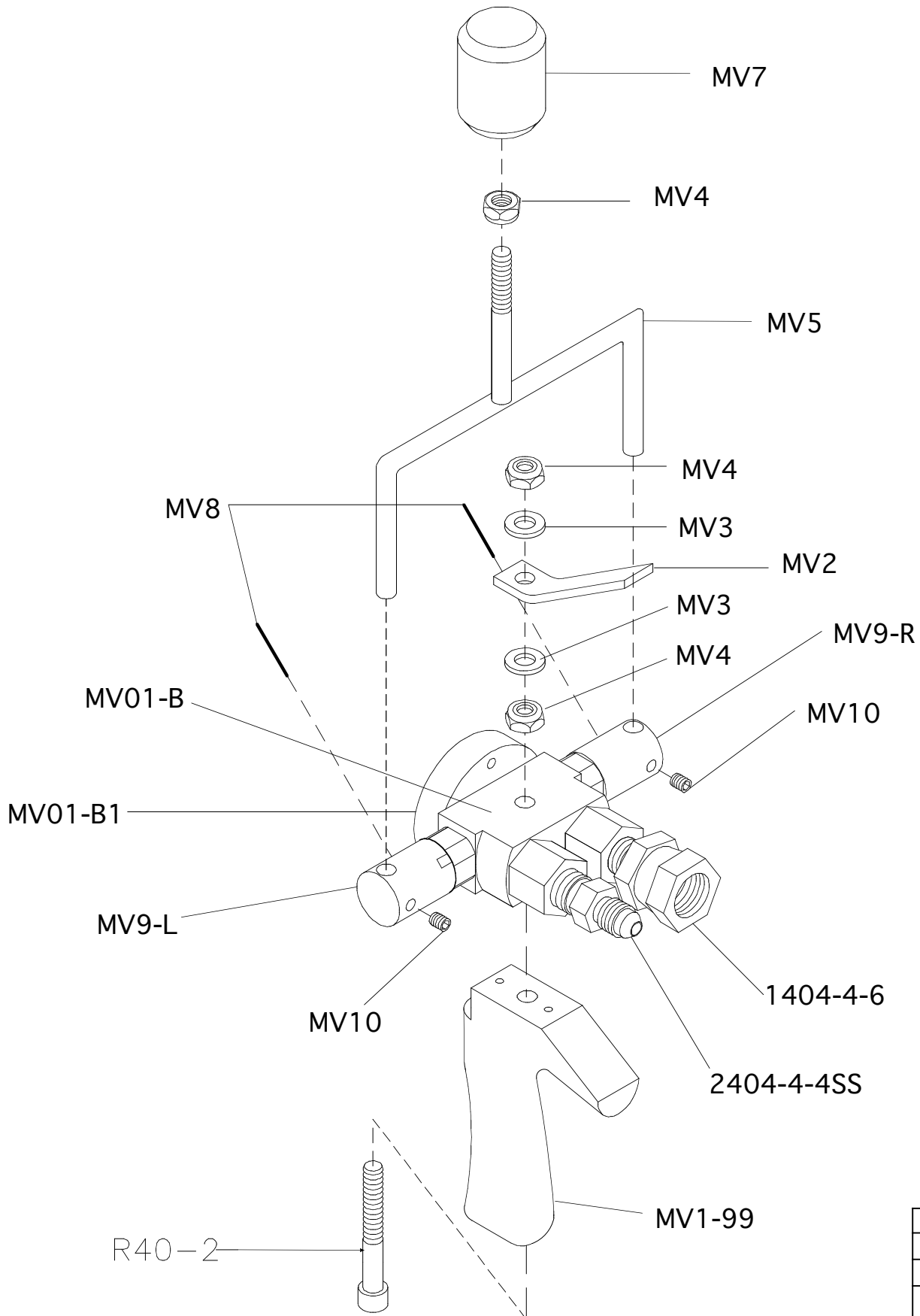


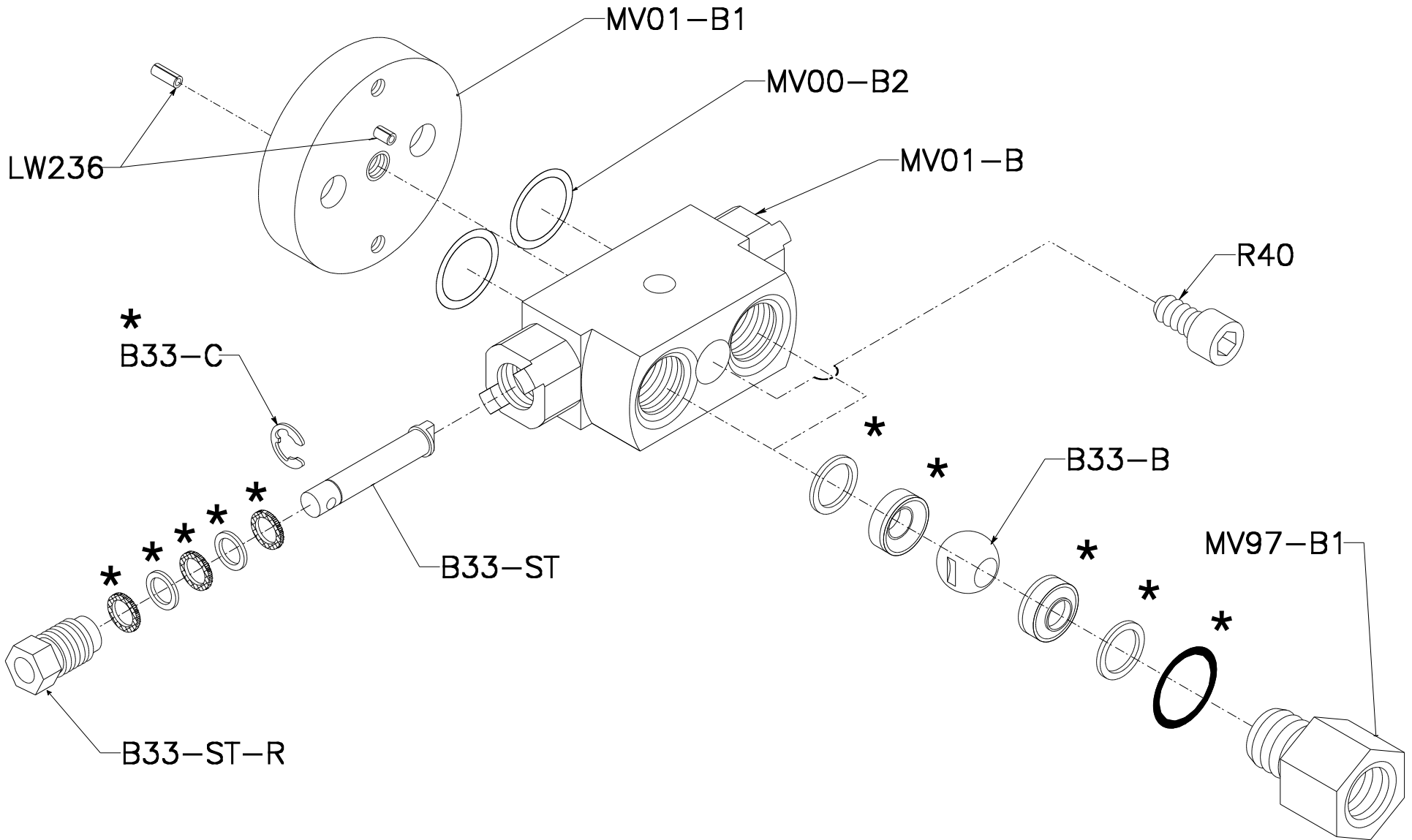
MV01-RTM VALVE

REPAIR KIT: B33-RK-2



REV. C	12/29/08
REV. B	7/11/07
REV. A	11/25/03
GS MFG	

MV01-BA BODY ASSEMBLY



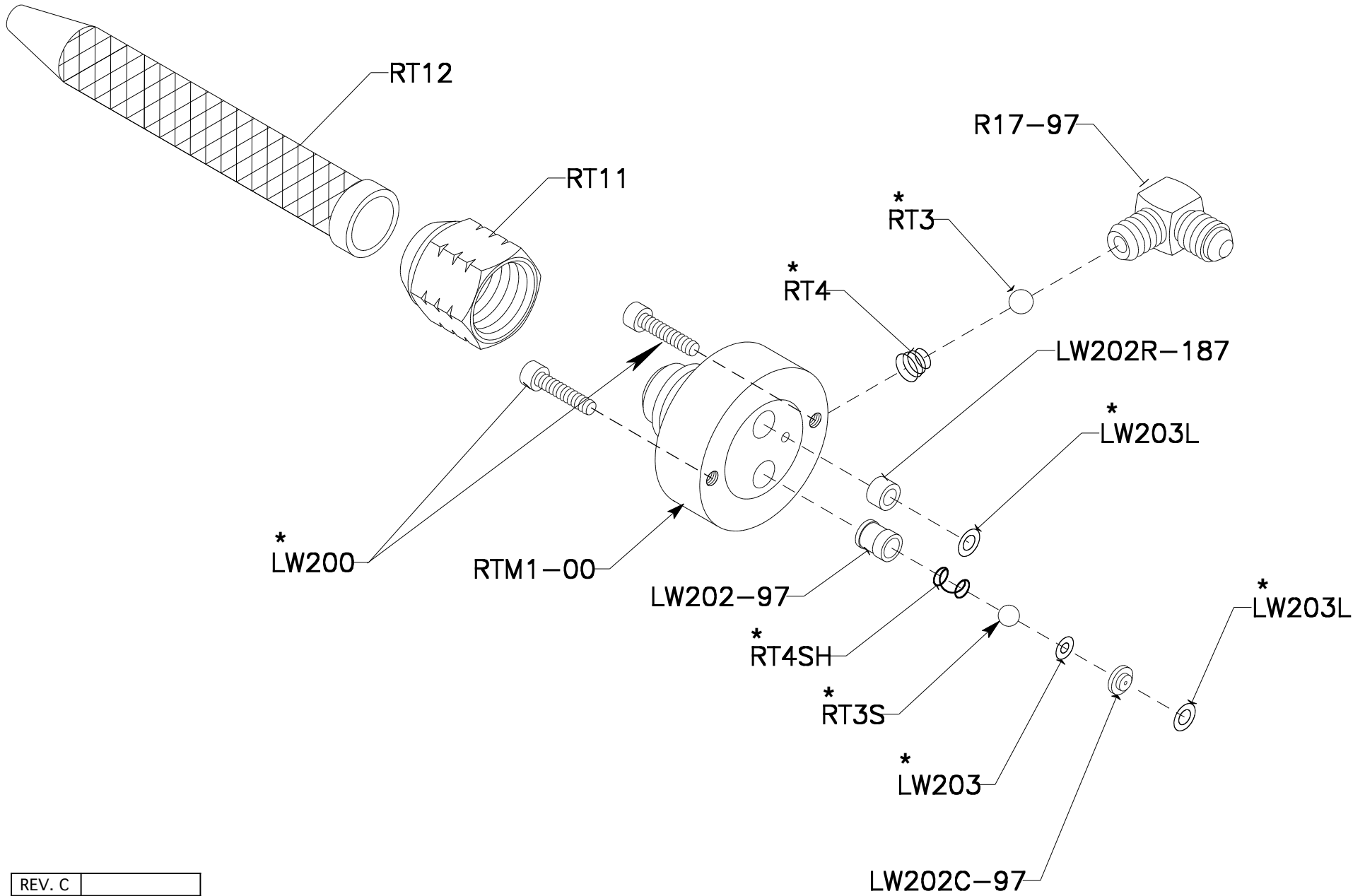
*: REPAIR KIT: B33-RK-2


REV. C	1/ 5 /09
REV. B	7/11/07
REV. A	11/25/03

RTM1-00-A

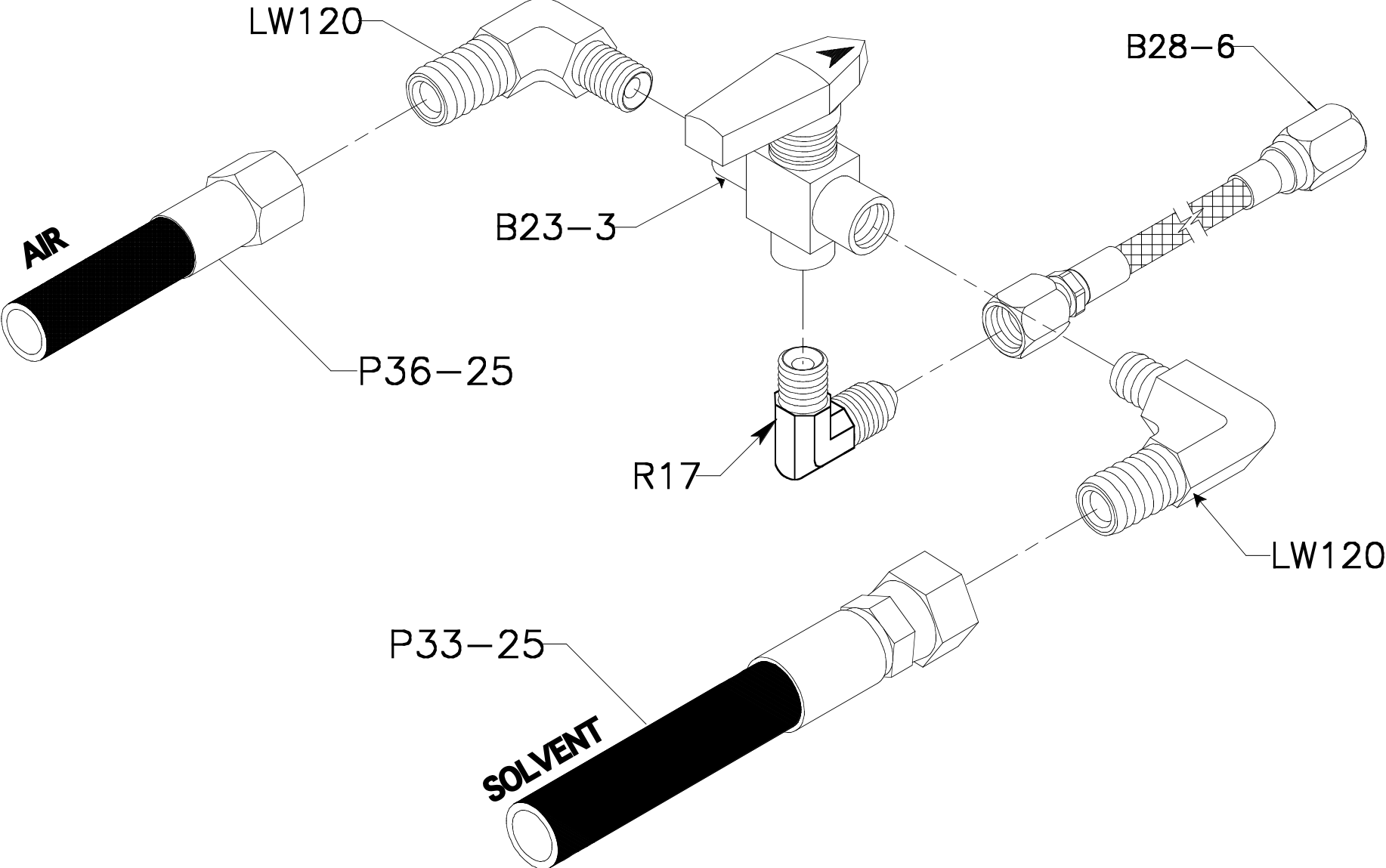
* :RTM1-RK


* :INDICATES PARTS INCLUDED IN KIT



REV. C	
REV. B	9 / 8 /09
REV. A	4 /29/08
 MFG	12/1/04

PURGE VALVE ASSEMBLY



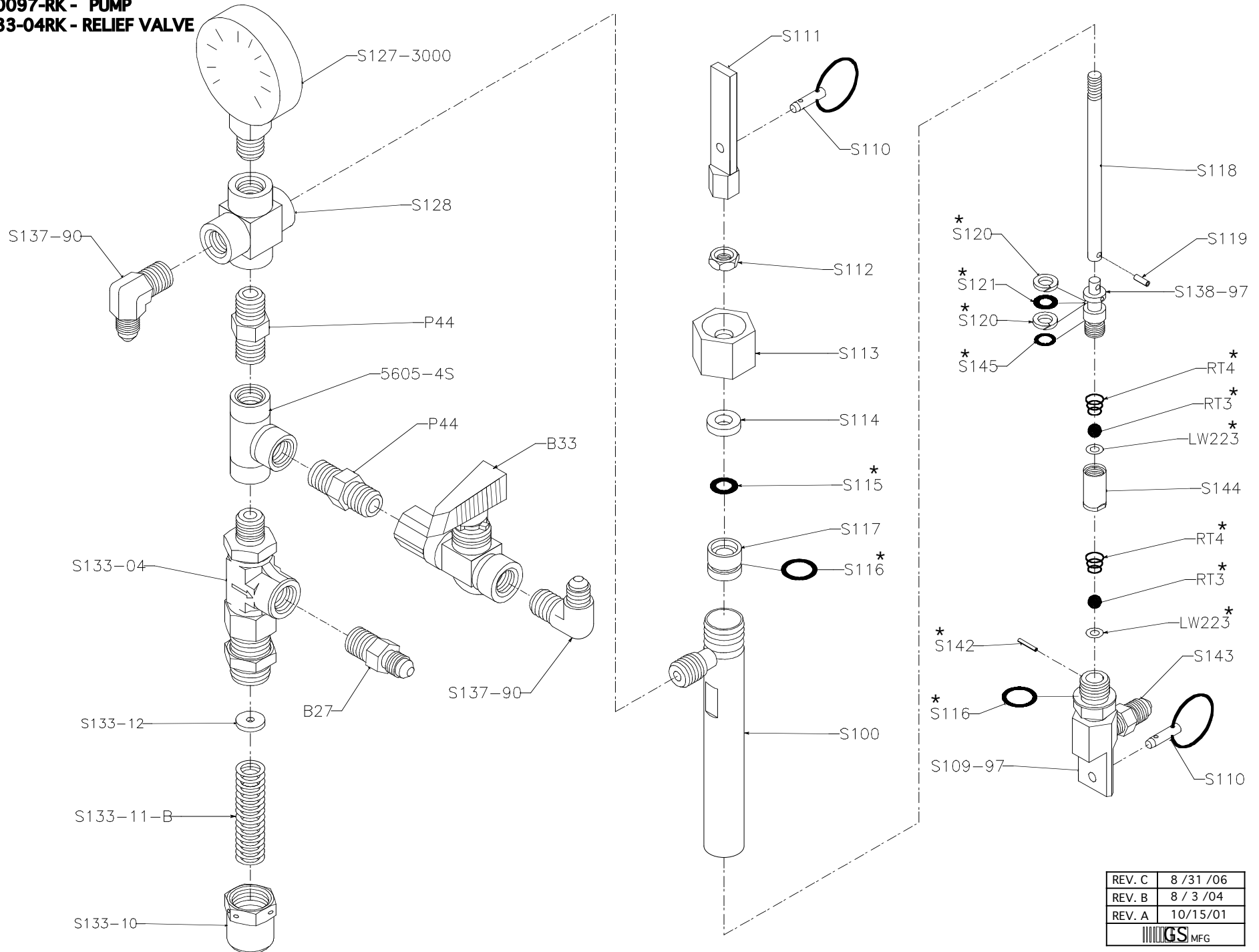
REV. C	
REV. B	
REV. A	2/22/10
 GS MFG	6/20/00

S1000-3000-04

REBUILD KITS:

* S10097-RK - PUMP

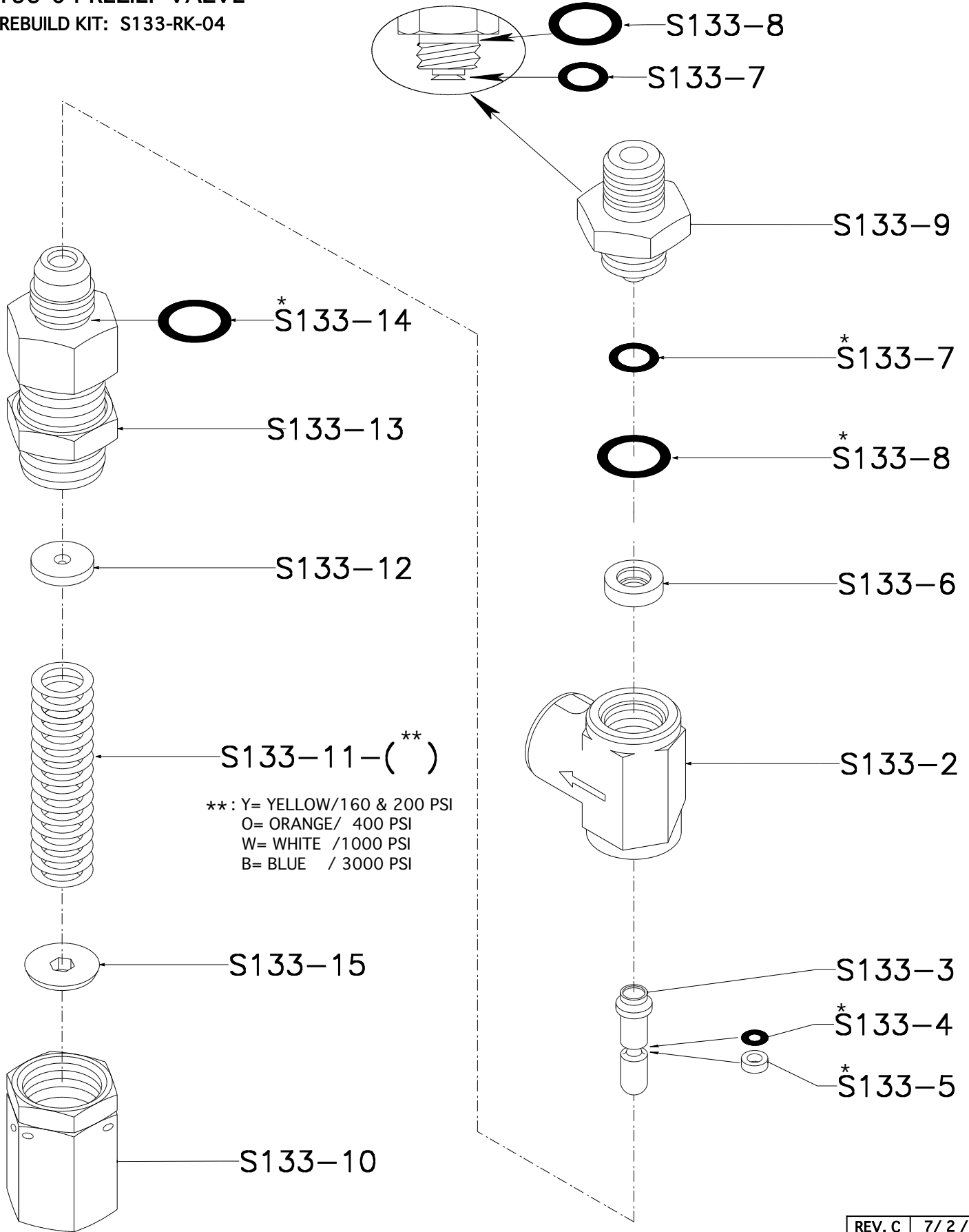
S133-04RK - RELIEF VALVE



REV. C	8 / 31 / 06
REV. B	8 / 3 / 04
REV. A	10 / 15 / 01

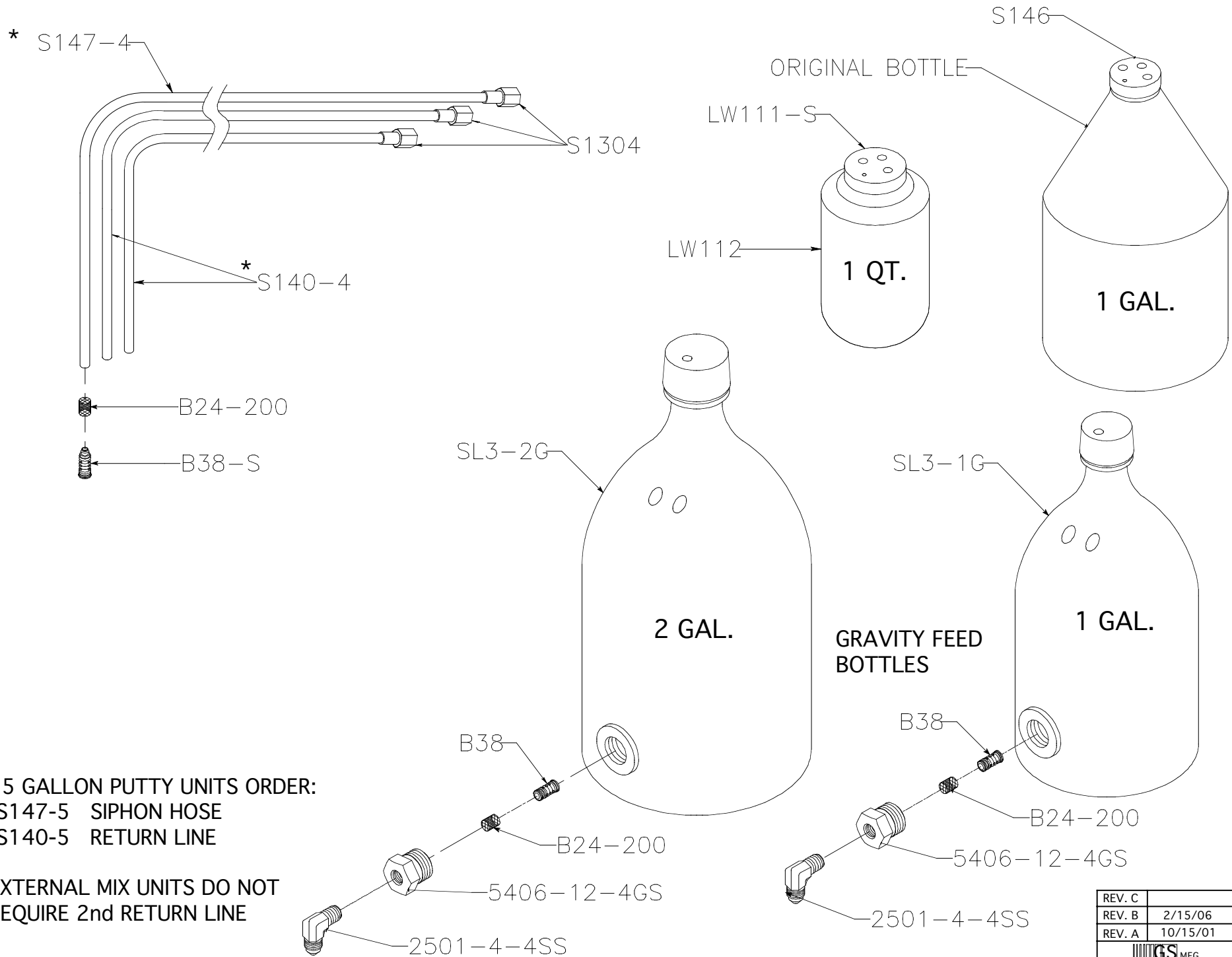
S133-04 RELIEF VALVE

* REBUILD KIT: S133-RK-04



REV. C	7/ 2 / 09
REV. B	10/8/ 08
REV. A	5/ 5 / 08
GS MFG	8 / 3 / 04

MEKP SIPHON HOSES / BOTTLES

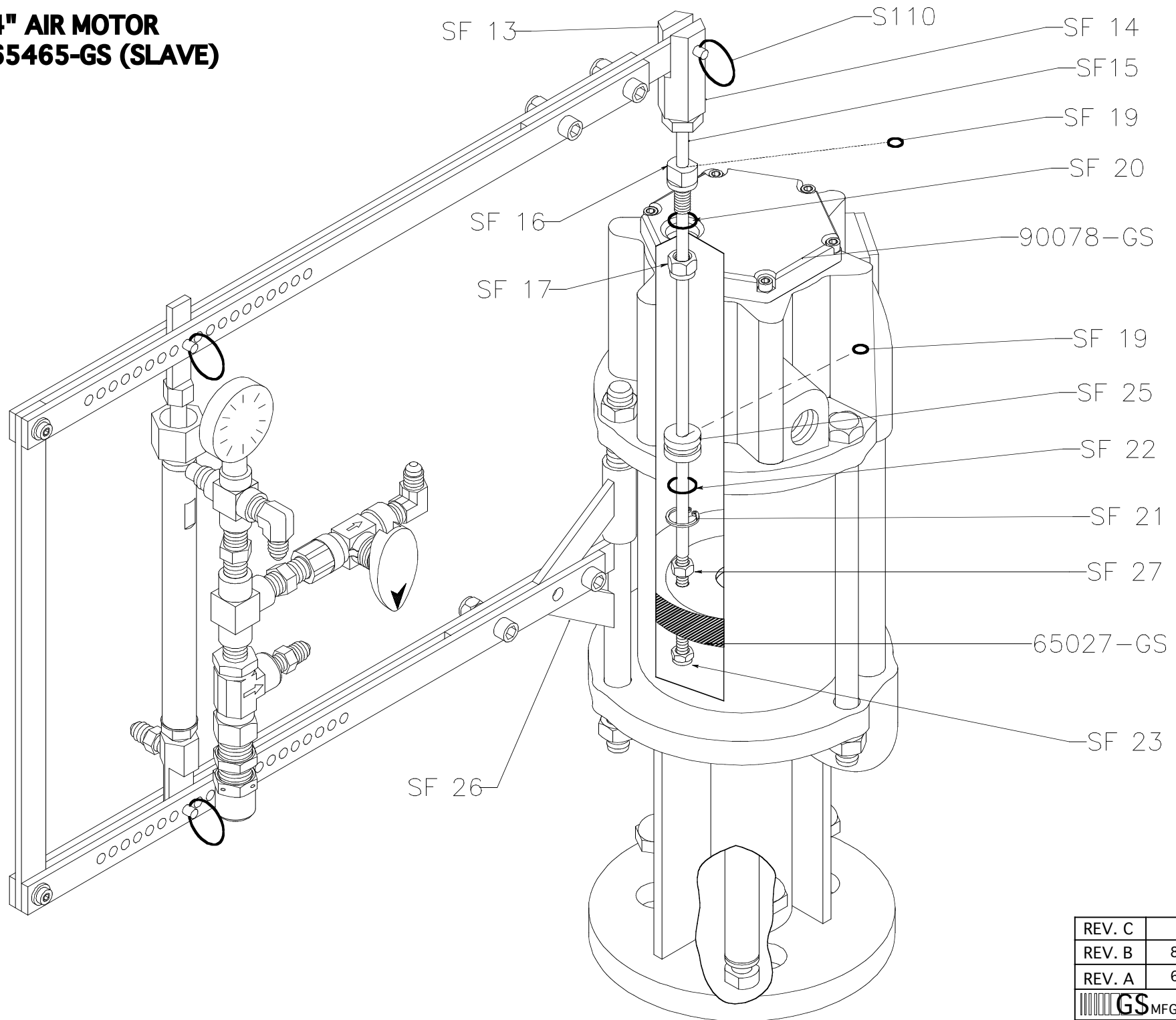



*. 55 GALLON PUTTY UNITS ORDER:
 -S147-5 SIPHON HOSE
 -S140-5 RETURN LINE

EXTERNAL MIX UNITS DO NOT
 REQUIRE 2nd RETURN LINE

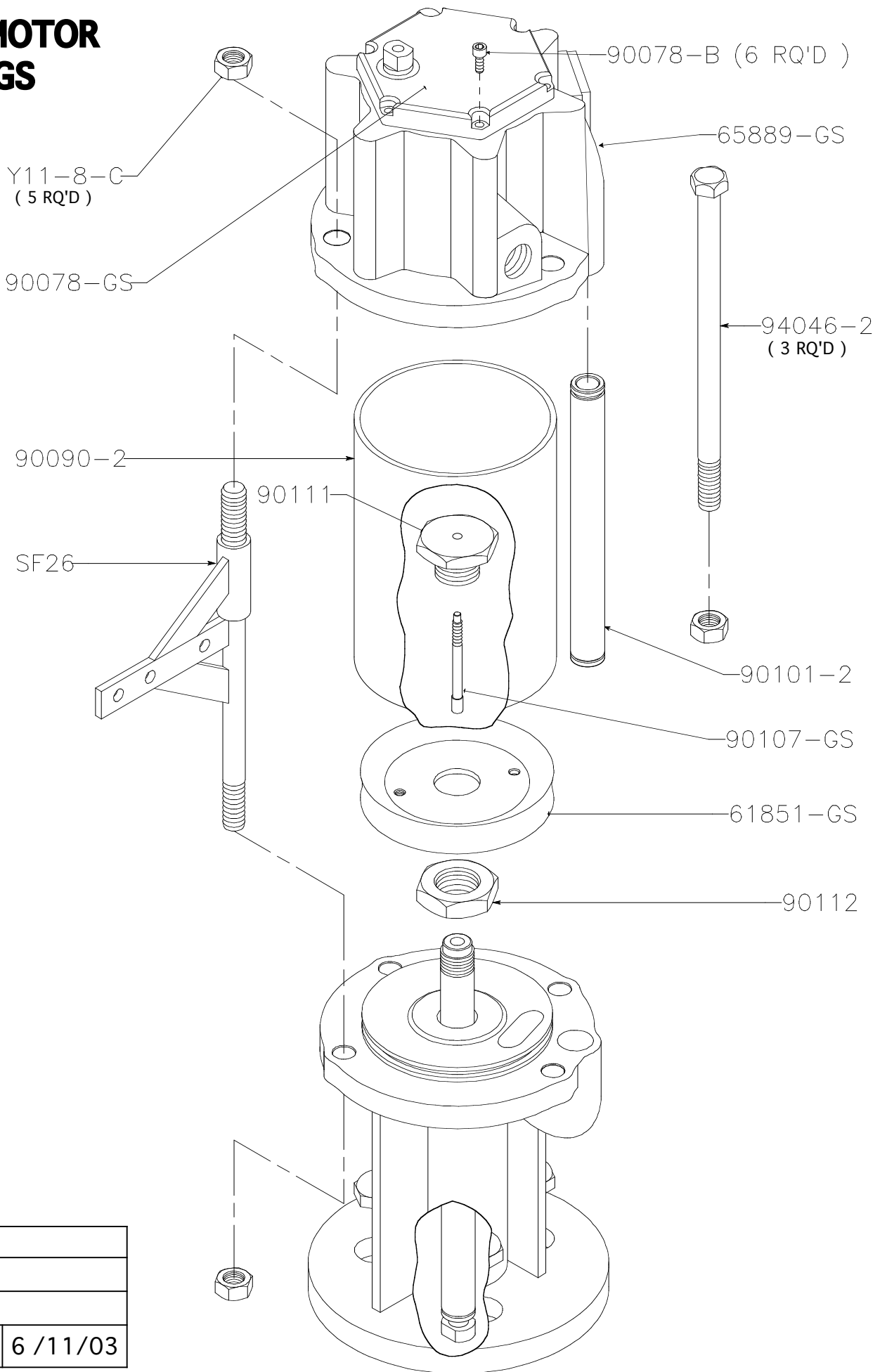
REV. C	
REV. B	2/15/06
REV. A	10/15/01


**4" AIR MOTOR
65465-GS (SLAVE)**



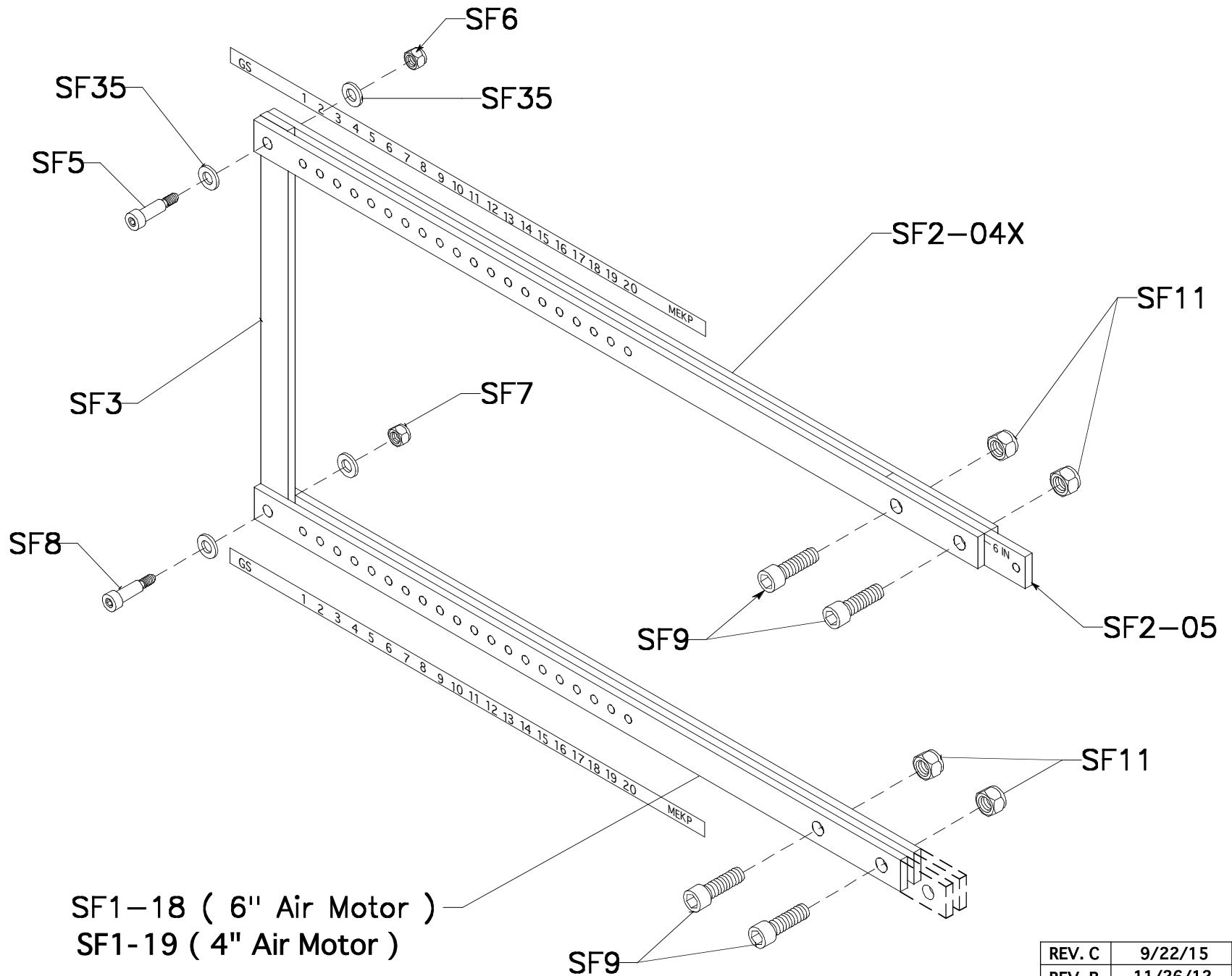
REV. C	
REV. B	8 / 3 /09
REV. A	6 /24/03
 GS MFG	10/15/01


4" AIR MOTOR 65465-GS



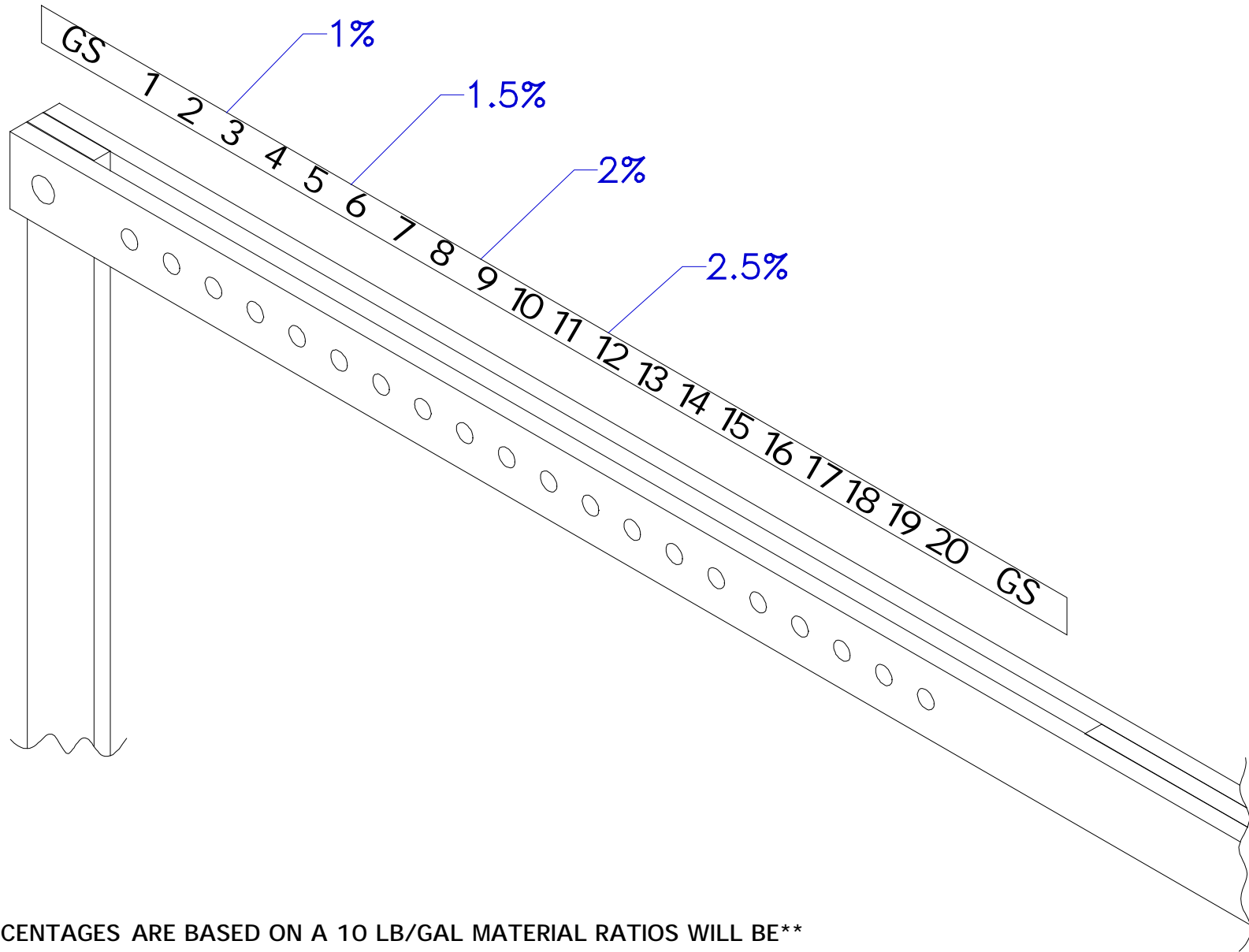
REV. C	
REV. B	
REV. A	
 MFG	6 / 11 / 03

S200X-SLAVE ARM ASSEMBLY
BWX-LWX



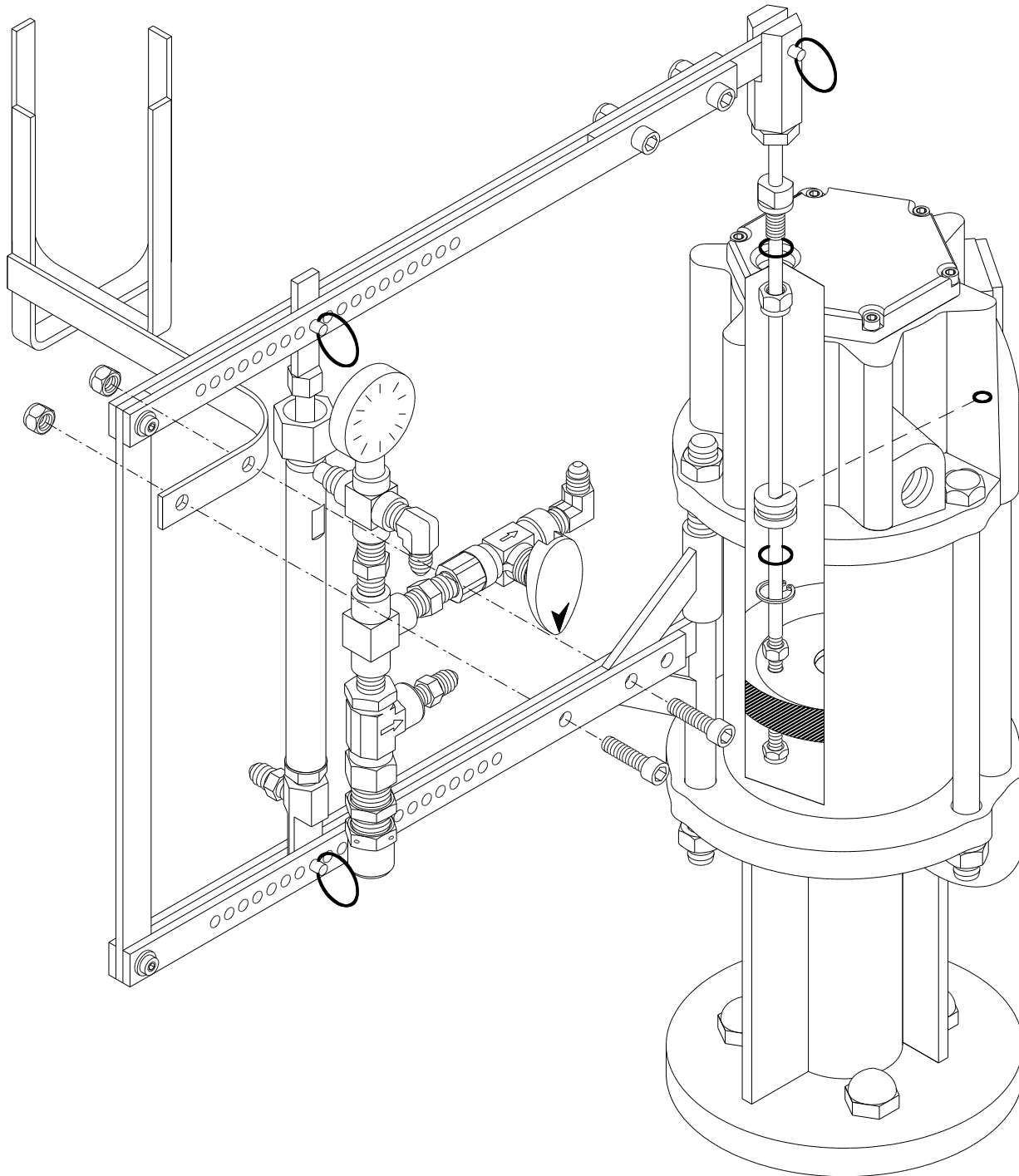
REV. C	9/22/15
REV. B	11/26/12
REV. A	3/23/06
 MFG	5/20/03


PUTTY UNIT MEKP PERCENTAGES



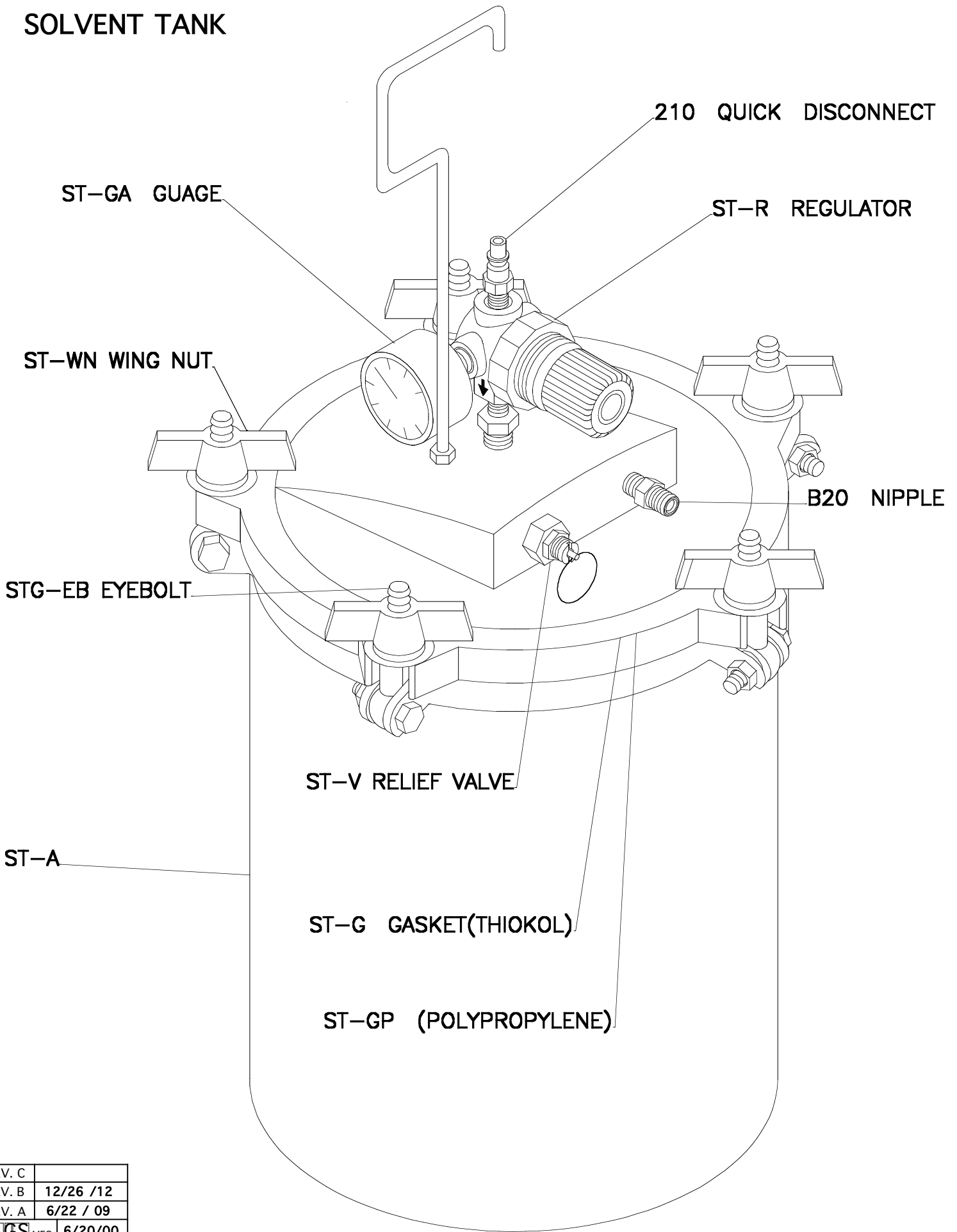
****PERCENTAGES ARE BASED ON A 10 LB/GAL MATERIAL RATIOS WILL BE**
RICH IF THE MATERIAL IS LIGHTER(1% MIGHT ACTUALLY BE 1.5%).**


LWX-65465-GS
MEKP BOTTLE BRACKET



REV. C	
REV. B	11/29/12
REV. A	3 /23/06
 GS MFG	5 /20/03

SOLVENT TANK



REV. C	
REV. B	12/26 /12
REV. A	6/22 / 09
 GS MFG	6/20/00