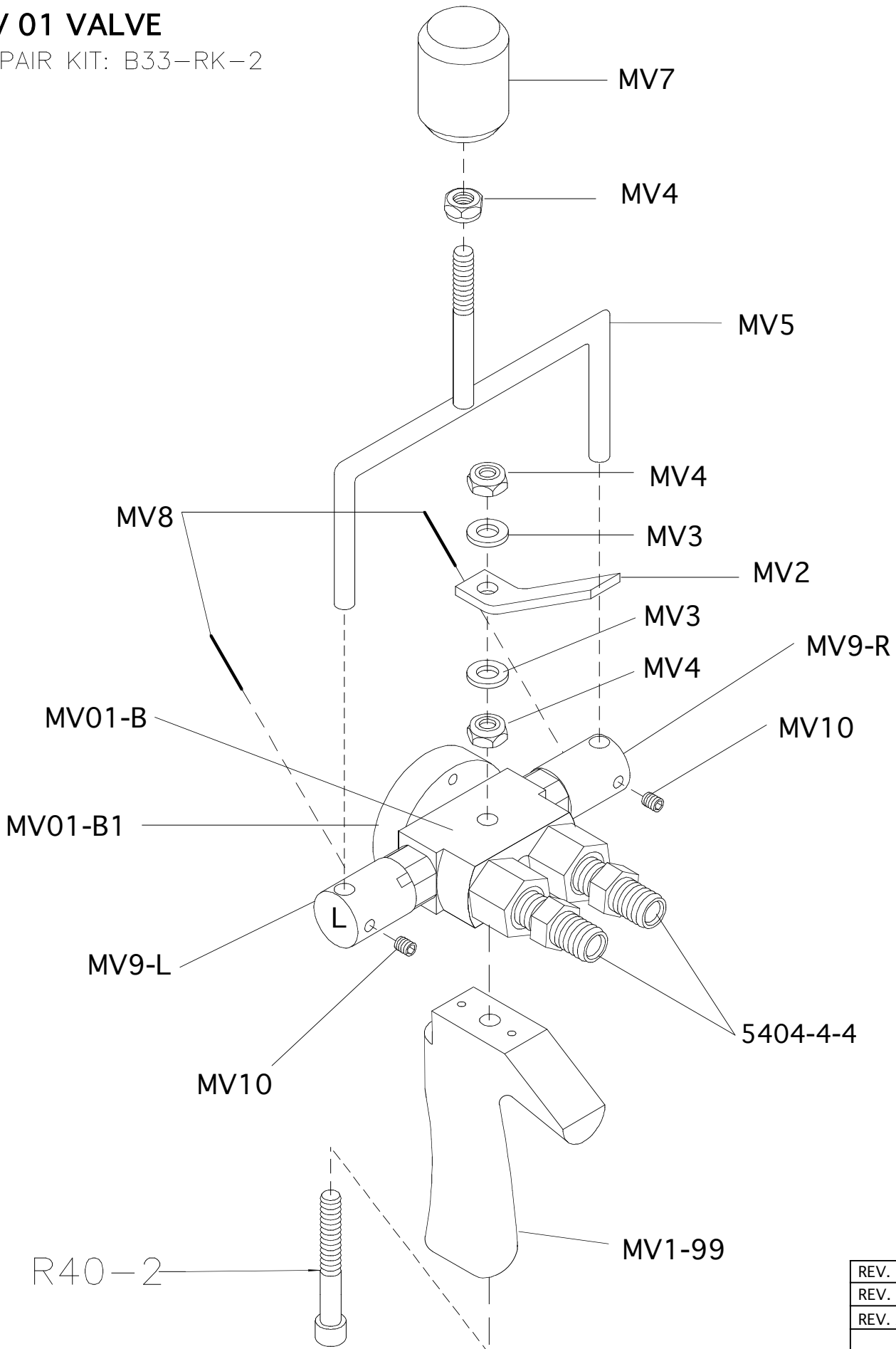


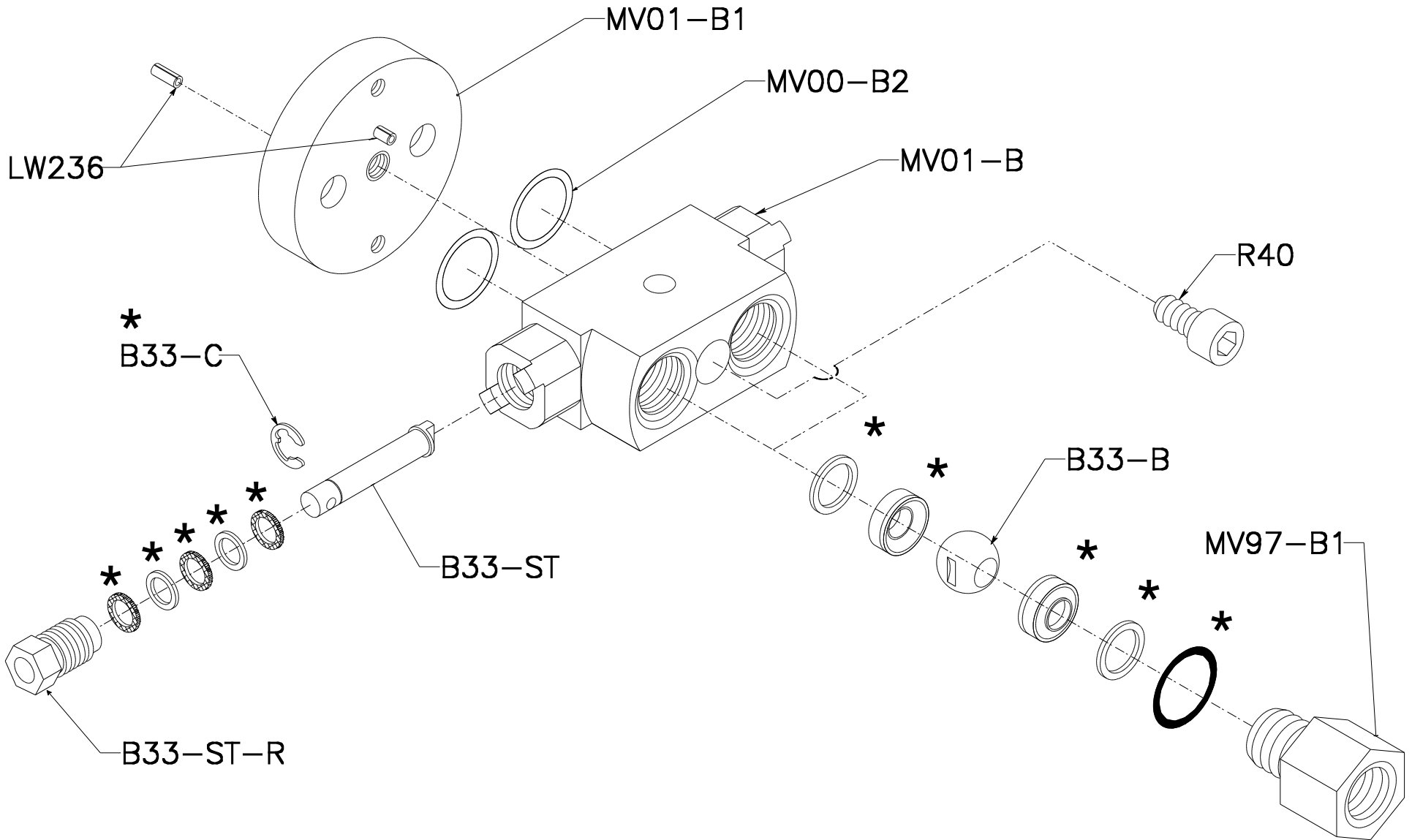
# MV 01 VALVE

REPAIR KIT: B33-RK-2



REV. C	12/29/08
REV. B	11/25/03
REV. A	10/15/01

MV01-BA BODY ASSEMBLY



\*: REPAIR KIT: B33-RK-2

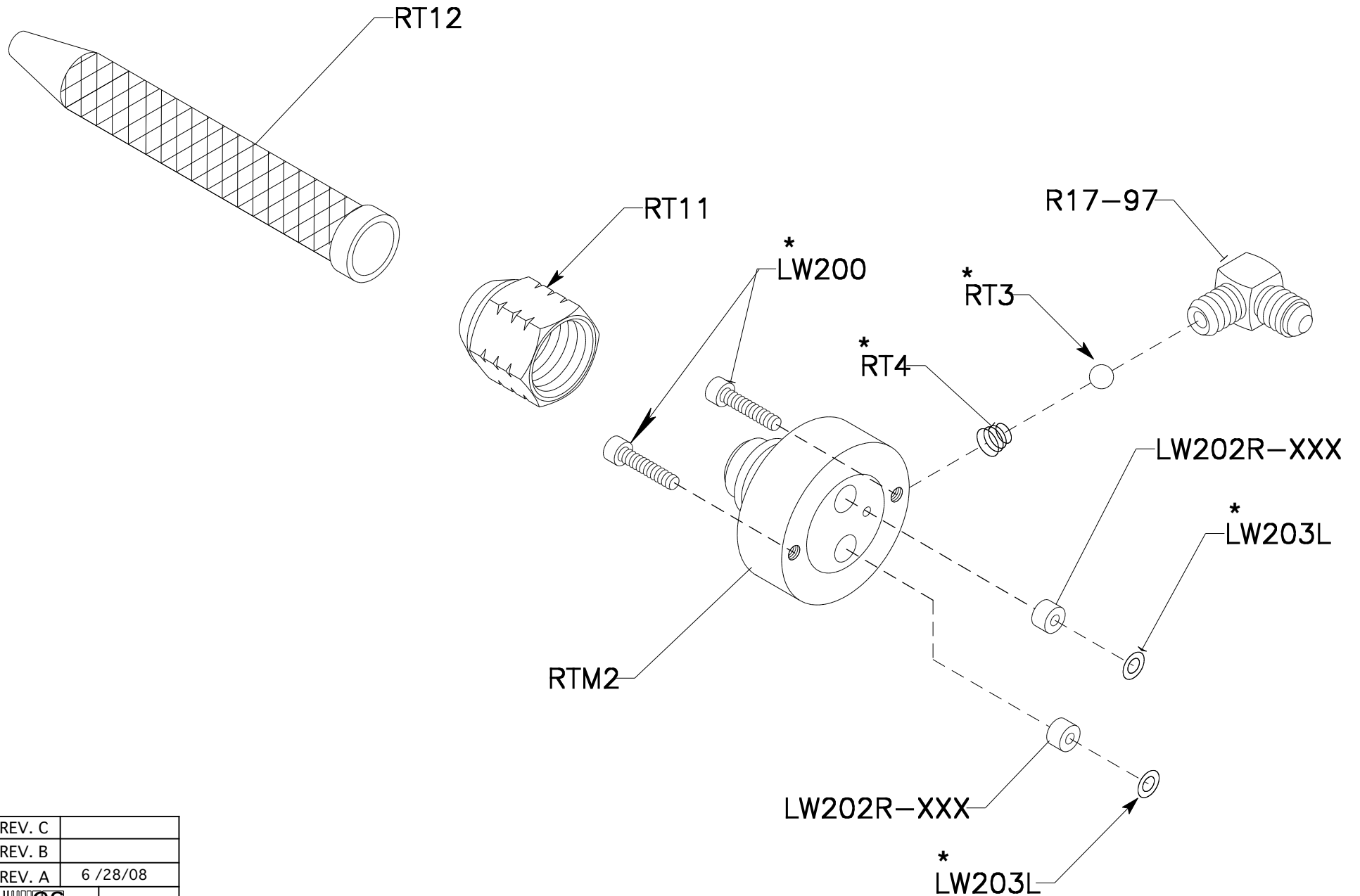
REV. C	1/ 5 /09
REV. B	7/11/07
REV. A	11/25/03


# RTM2-A

1-1 NOZZLE

\* :RTM2-RK

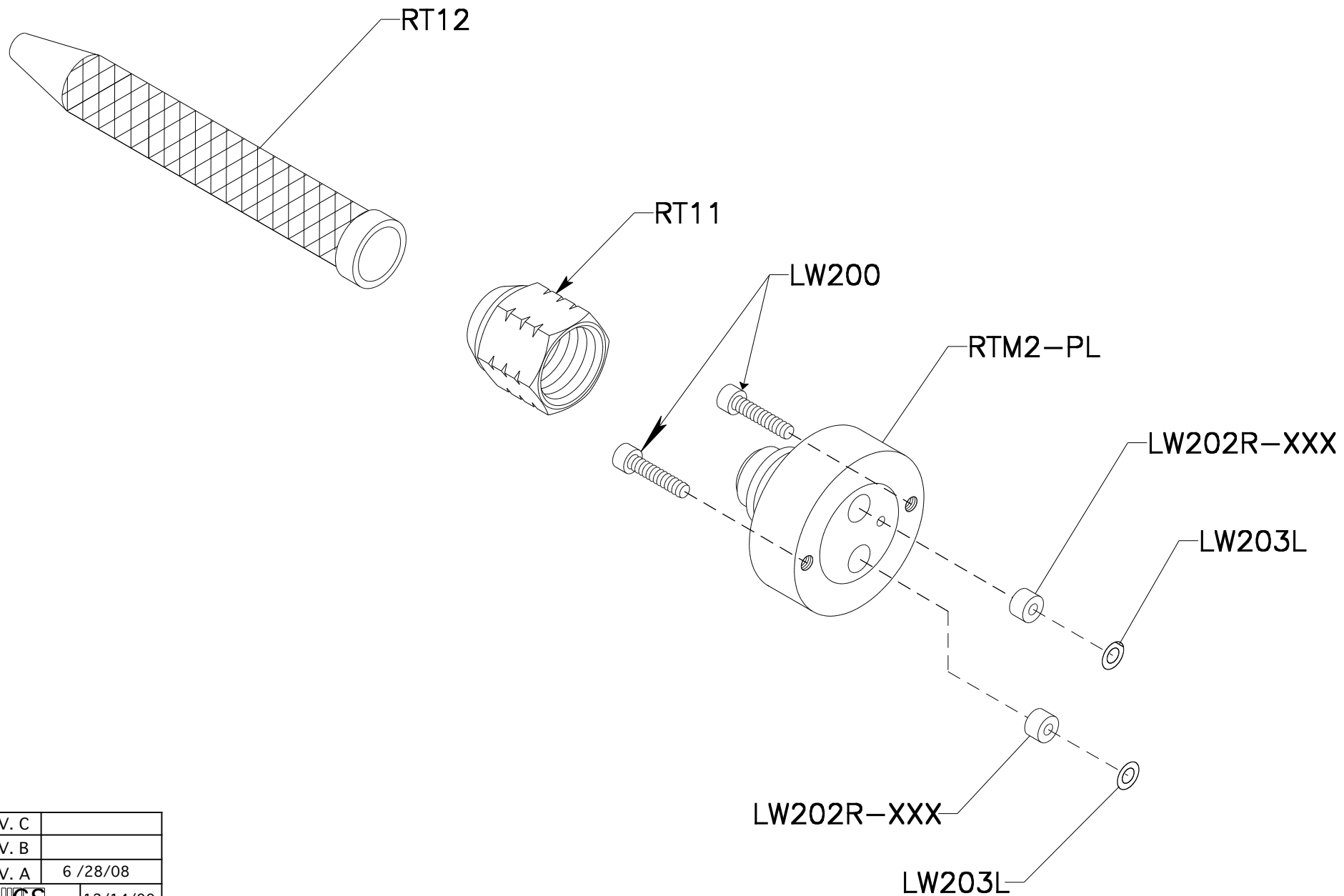
\* :INDICATES PARTS INCLUDED IN KIT




REV. C	
REV. B	
REV. A	6 /28/08
 MFG	12/14/00

# RTM2-PL-A

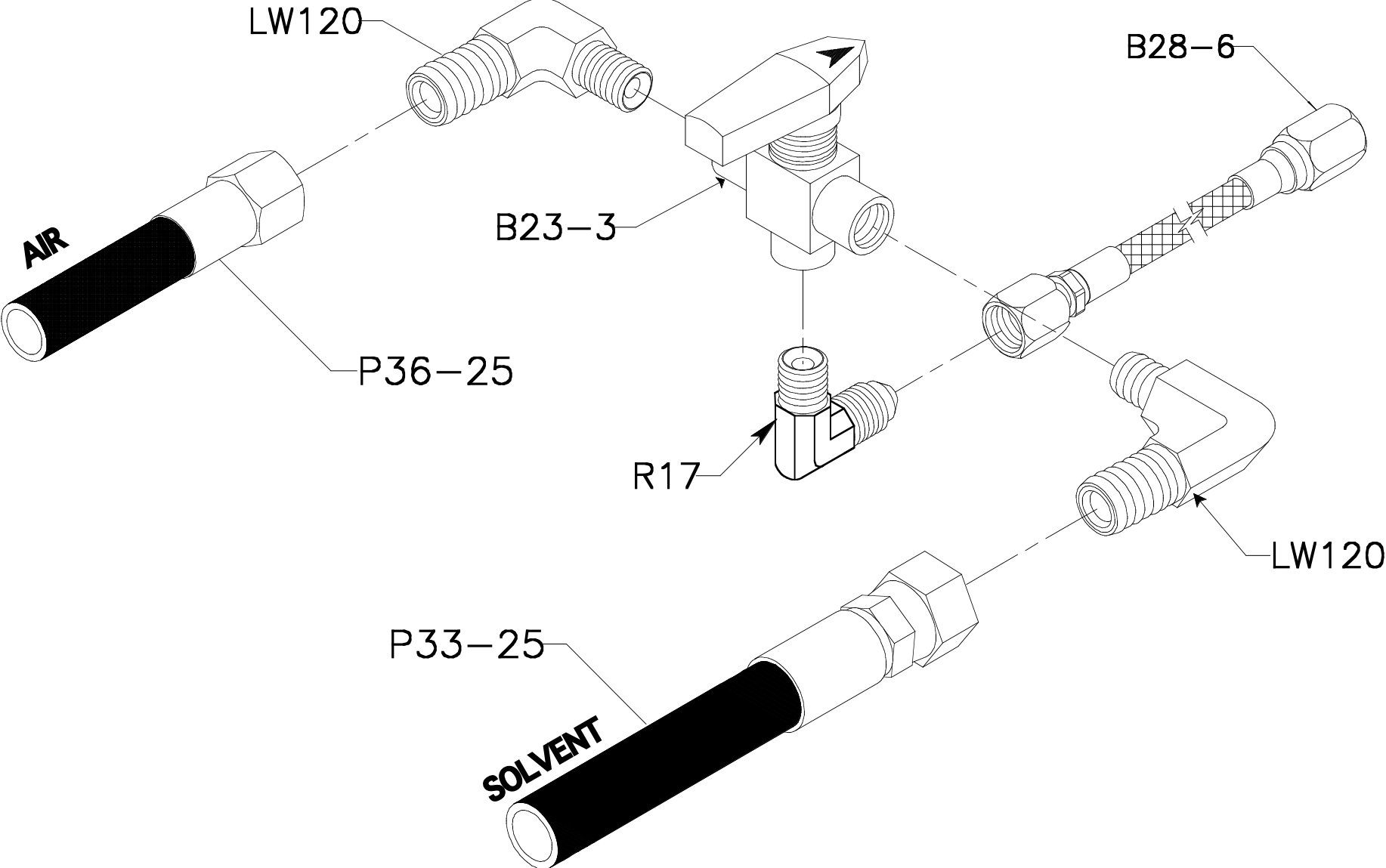
1-1 NOZZLE




REV. C	
REV. B	
REV. A	6 /28/08
 MFG	12/14/00



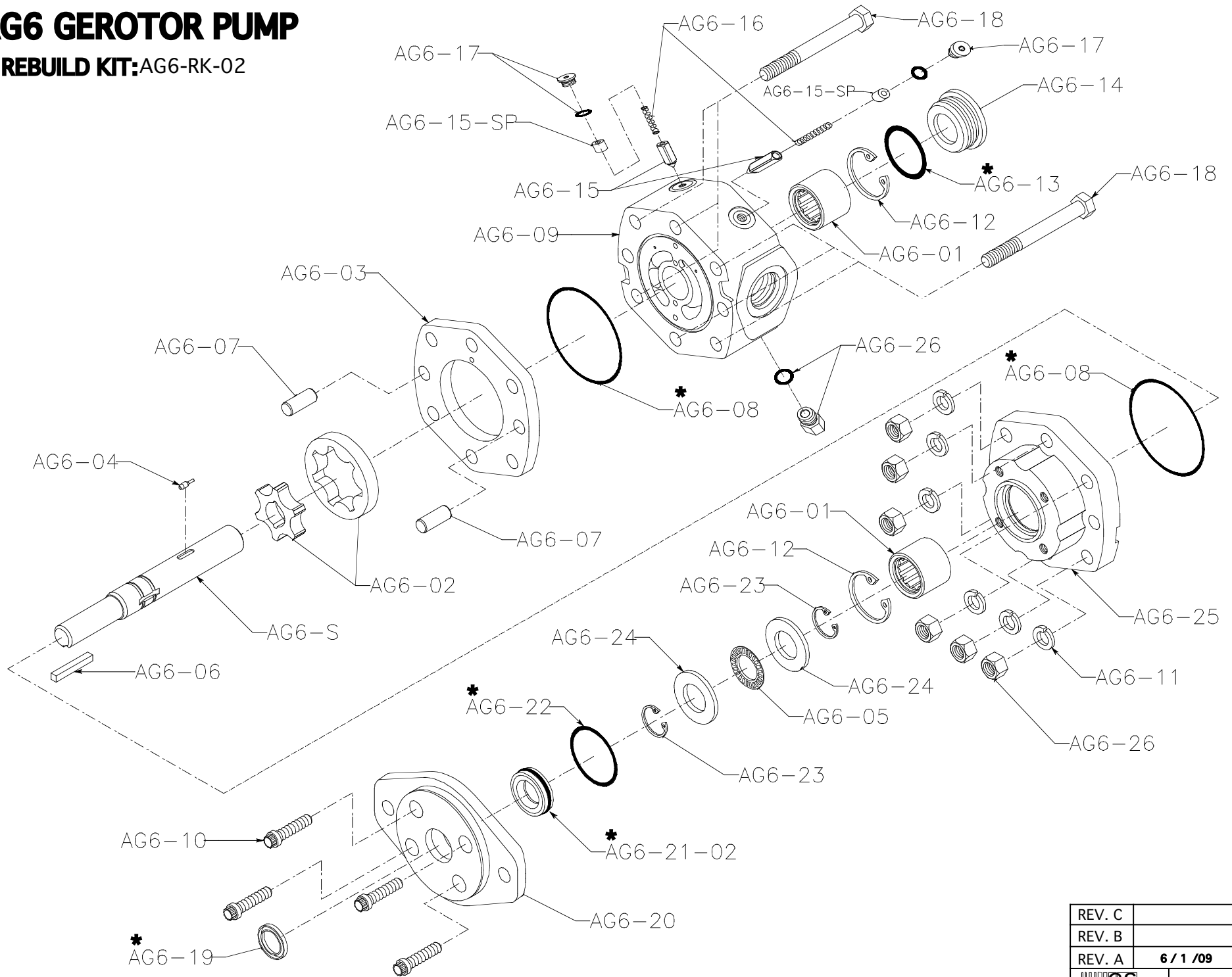
# PURGE VALVE ASSEMBLY




REV. C	
REV. B	
REV. A	2/22/10
 GS MFG	6/20/00

# AG6 GEROTOR PUMP

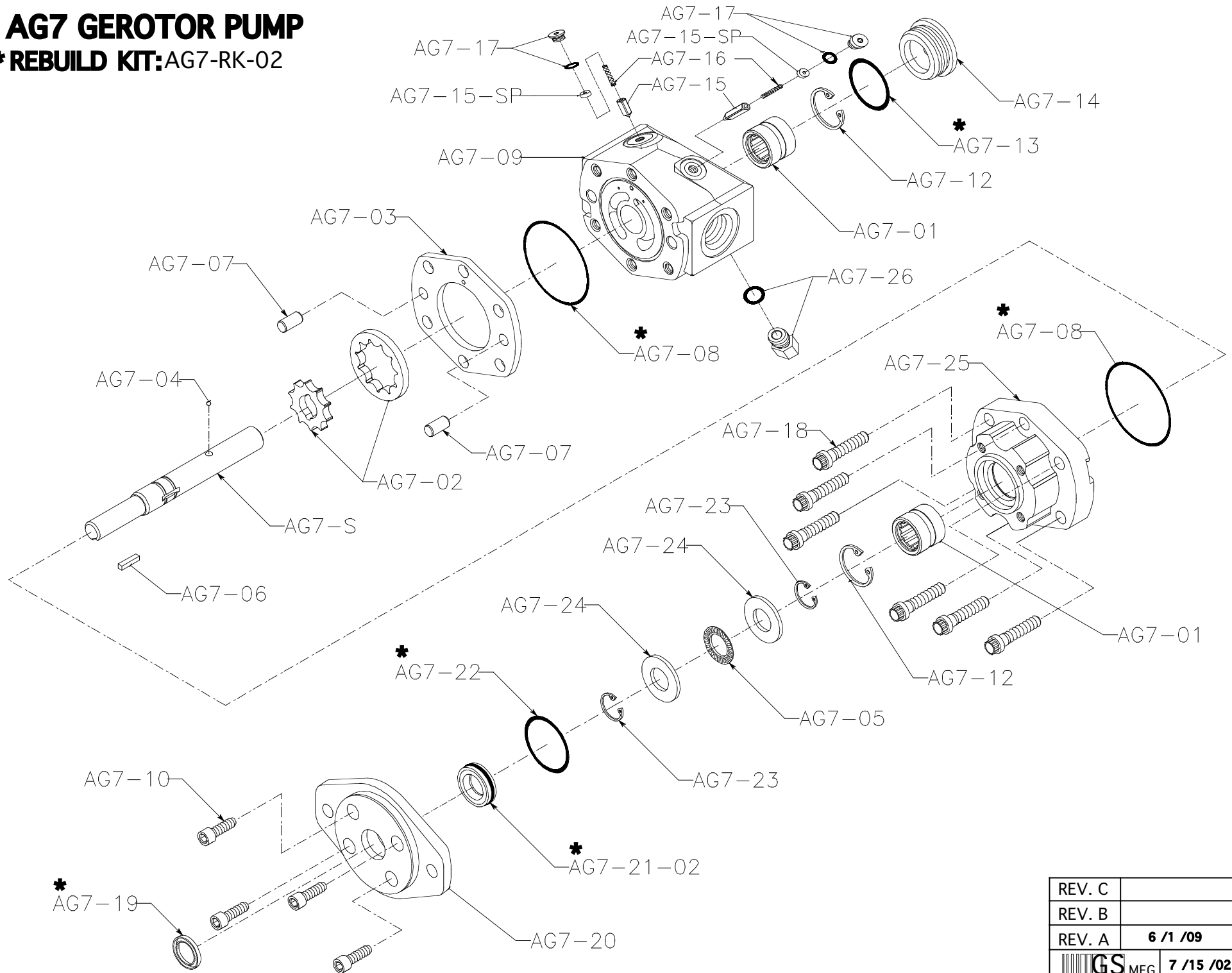
\*REBUILD KIT:AG6-RK-02




REV. C	
REV. B	
REV. A	6 / 1 / 09
 MFG	7 / 5 / 02

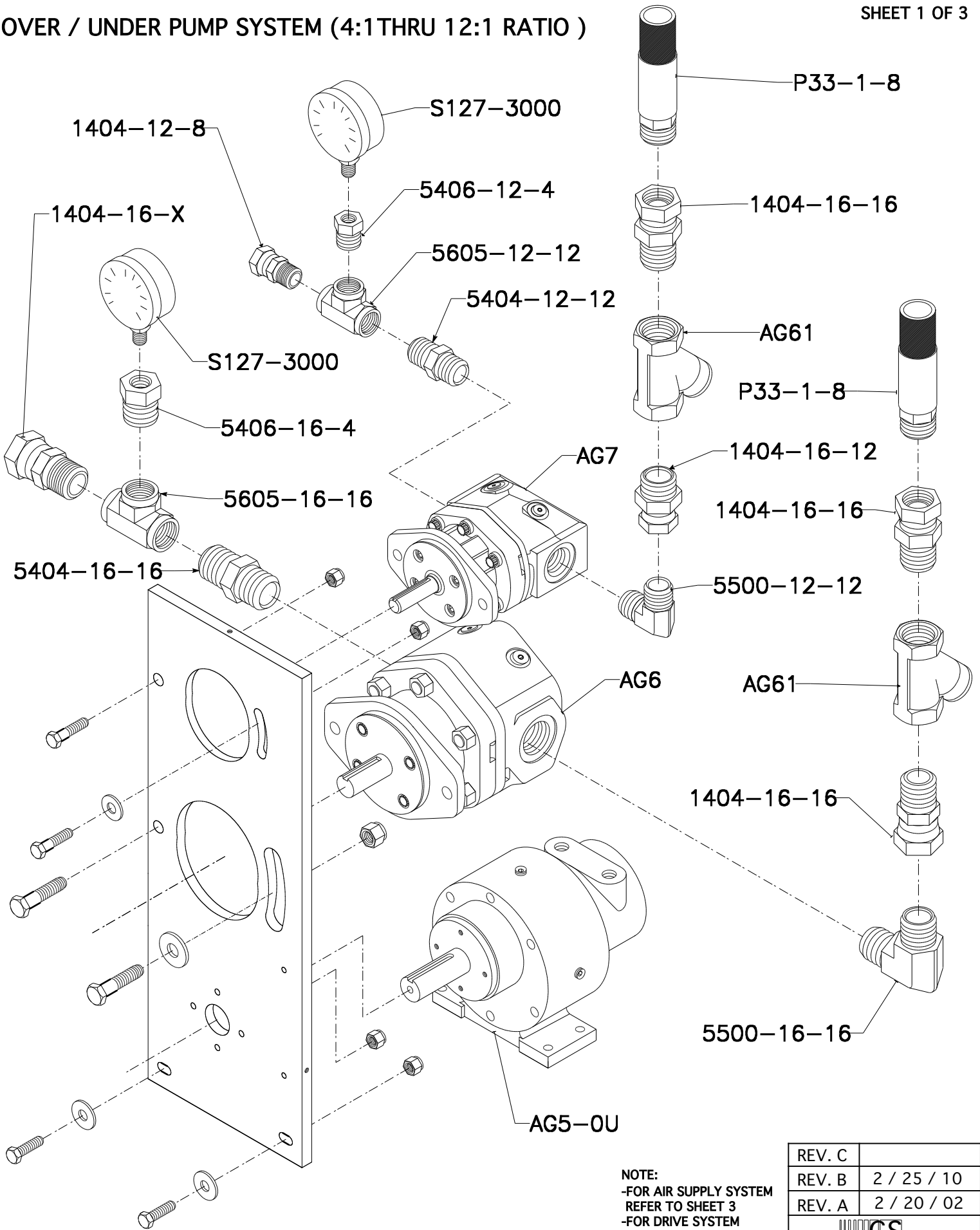
# AG7 GEROTOR PUMP

**\*REBUILD KIT:AG7-RK-02**



REV. C	
REV. B	
REV. A	6 /1 /09
 GS MFG	7 /15 /02

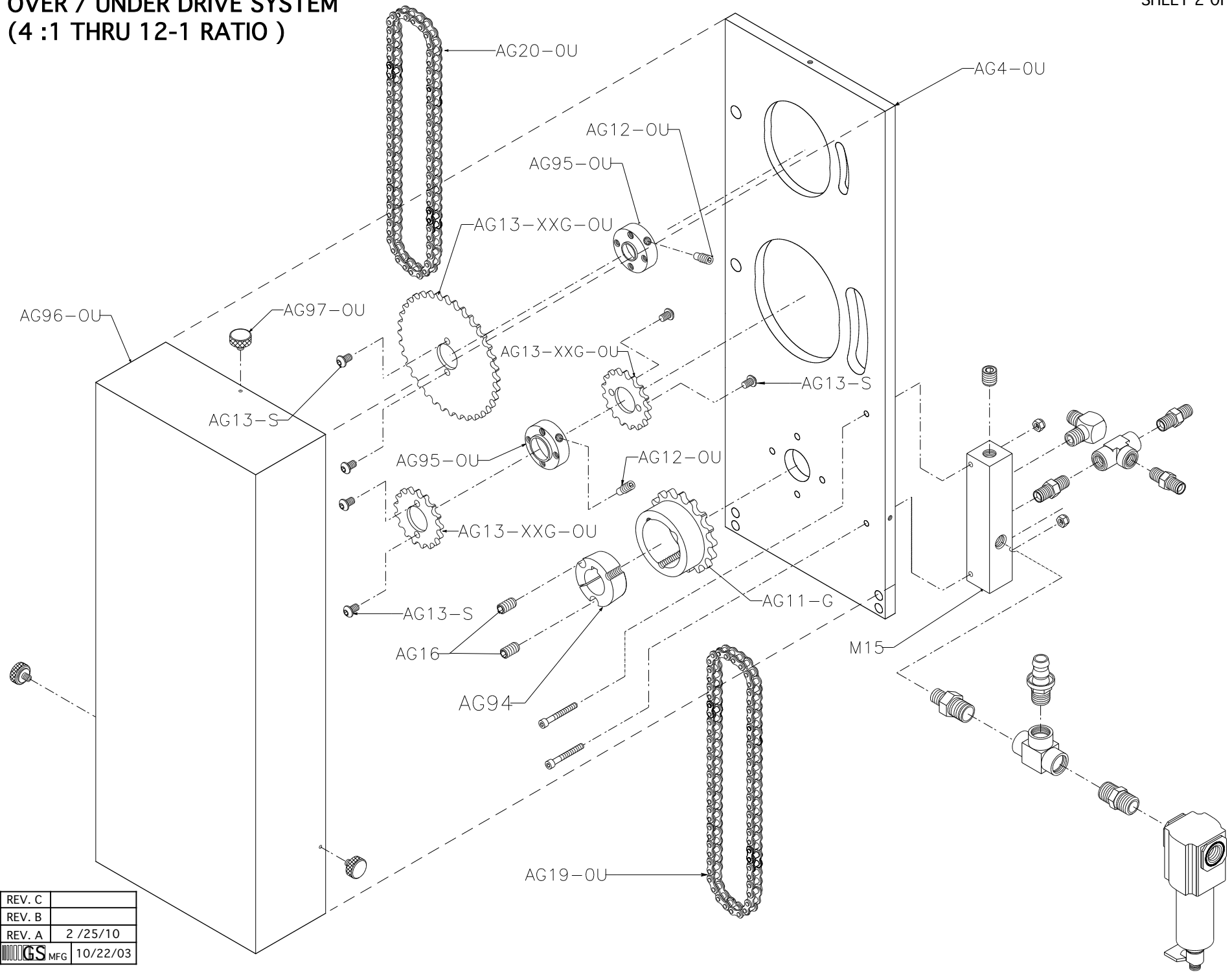
# OVER / UNDER PUMP SYSTEM (4:1 THRU 12:1 RATIO )




NOTE:  
 -FOR AIR SUPPLY SYSTEM  
 REFER TO SHEET 3  
 -FOR DRIVE SYSTEM  
 REFER TO SHEET 2

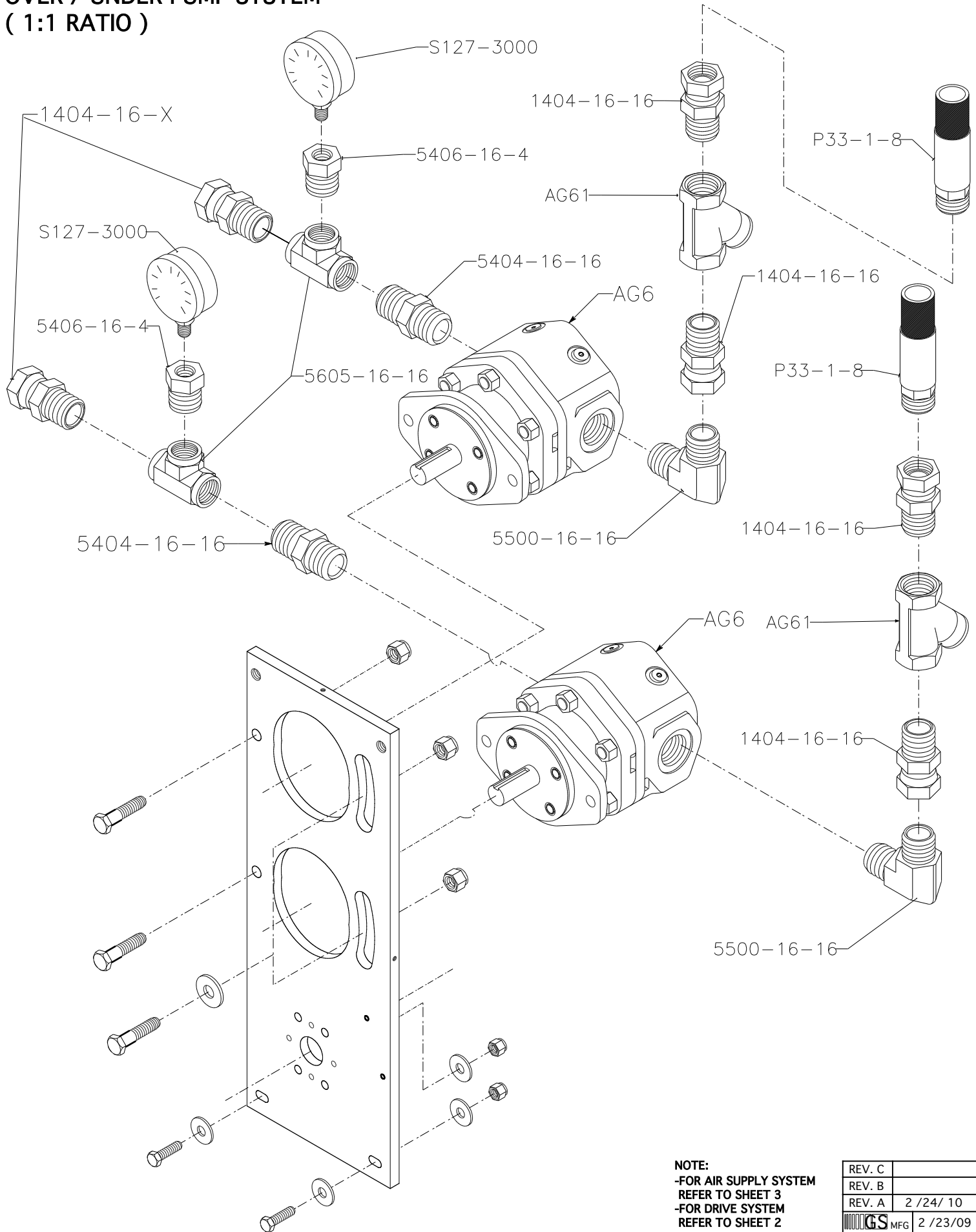
REV. C	
REV. B	2 / 25 / 10
REV. A	2 / 20 / 02

# OVER / UNDER DRIVE SYSTEM (4 :1 THRU 12-1 RATIO )




REV. C	
REV. B	
REV. A	2 /25/10
 MFG	10/22/03

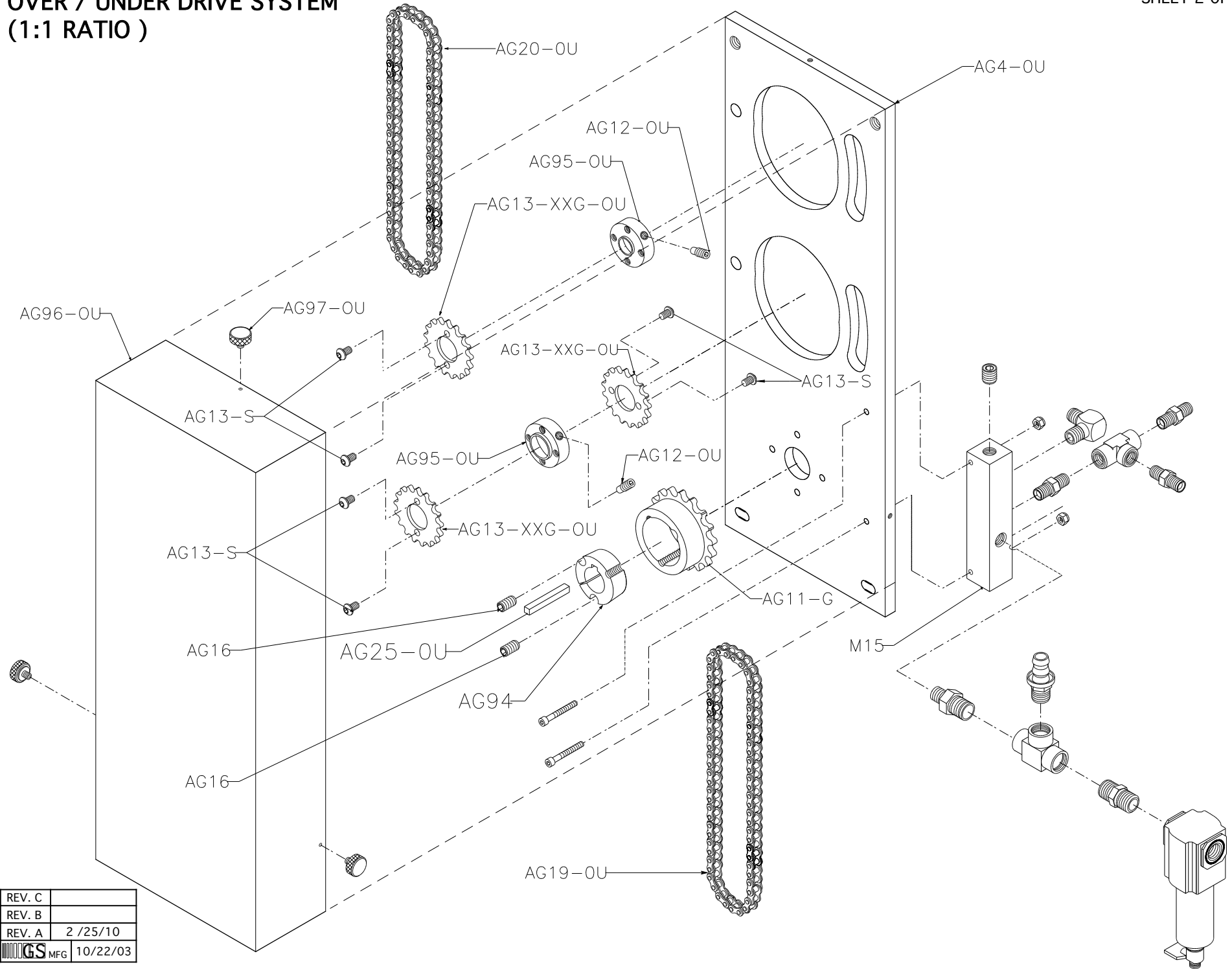
# OVER / UNDER PUMP SYSTEM ( 1:1 RATIO )




**NOTE:**  
 -FOR AIR SUPPLY SYSTEM  
 REFER TO SHEET 3  
 -FOR DRIVE SYSTEM  
 REFER TO SHEET 2

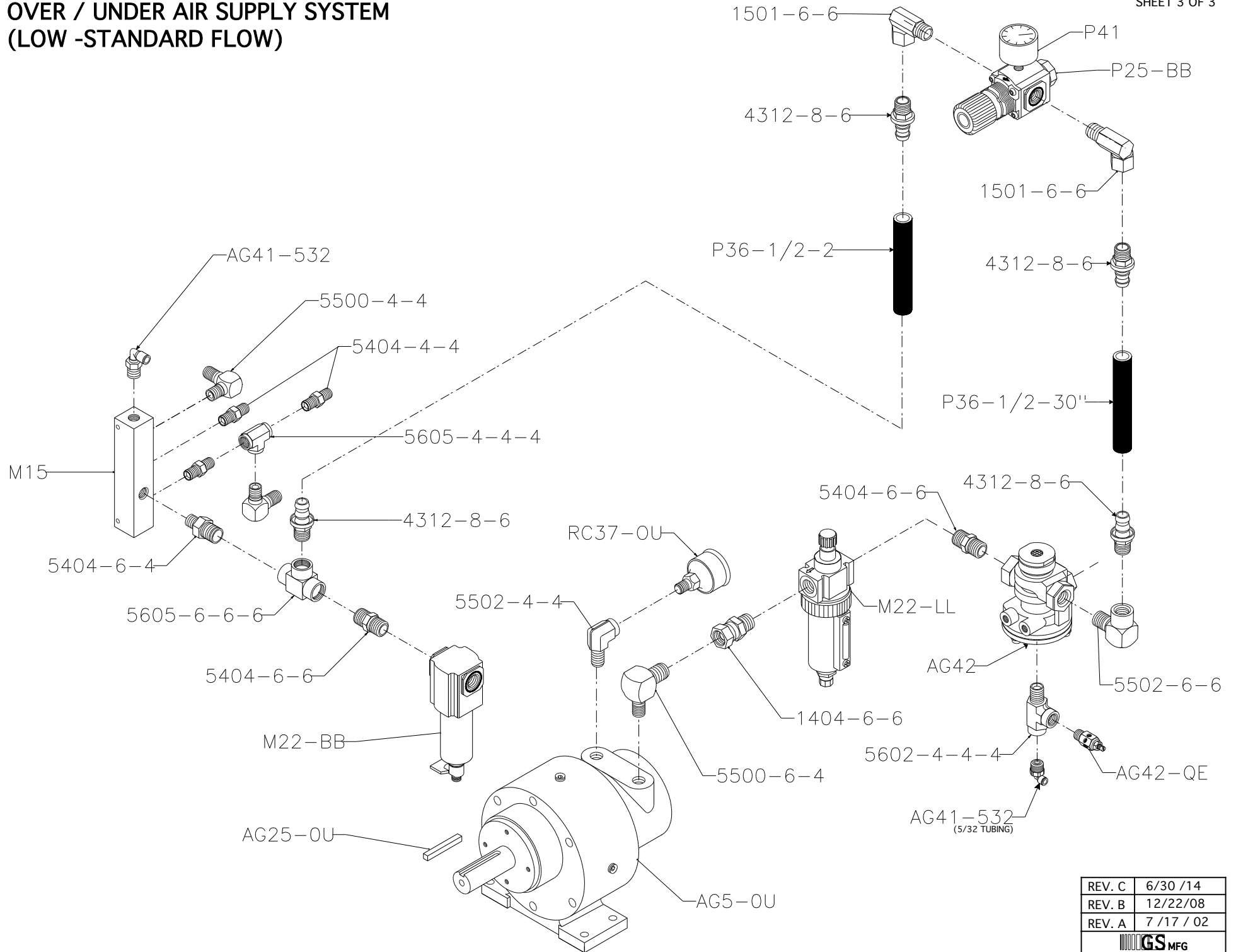
REV. C	
REV. B	
REV. A	2 / 24 / 10
 MFG	2 / 23 / 09

# OVER / UNDER DRIVE SYSTEM (1:1 RATIO)



REV. C	
REV. B	
REV. A	2 /25/10
 MFG	10/22/03

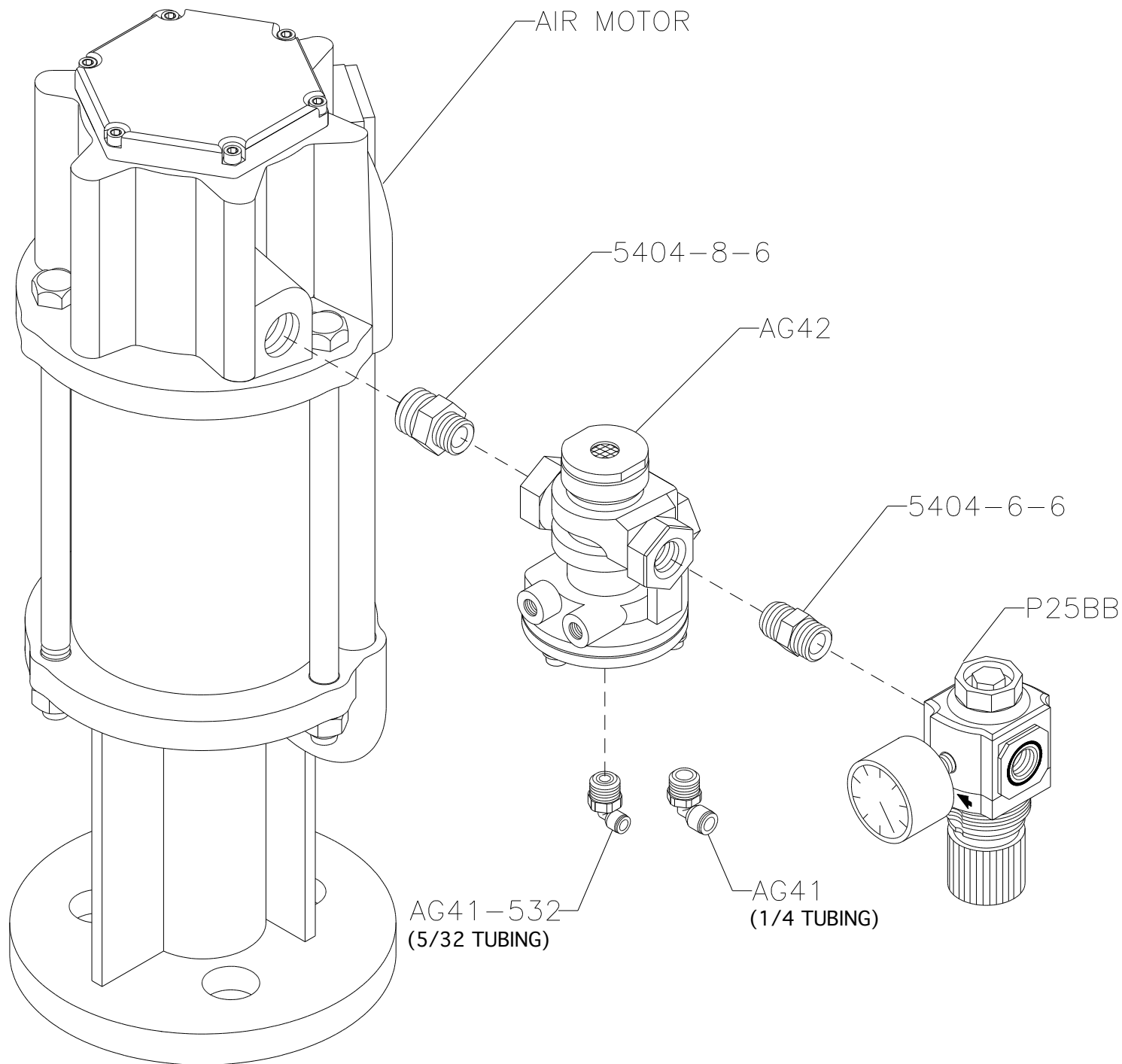
# OVER / UNDER AIR SUPPLY SYSTEM (LOW -STANDARD FLOW)



REV. C	6/30 /14
REV. B	12/22/08
REV. A	7 /17 / 02



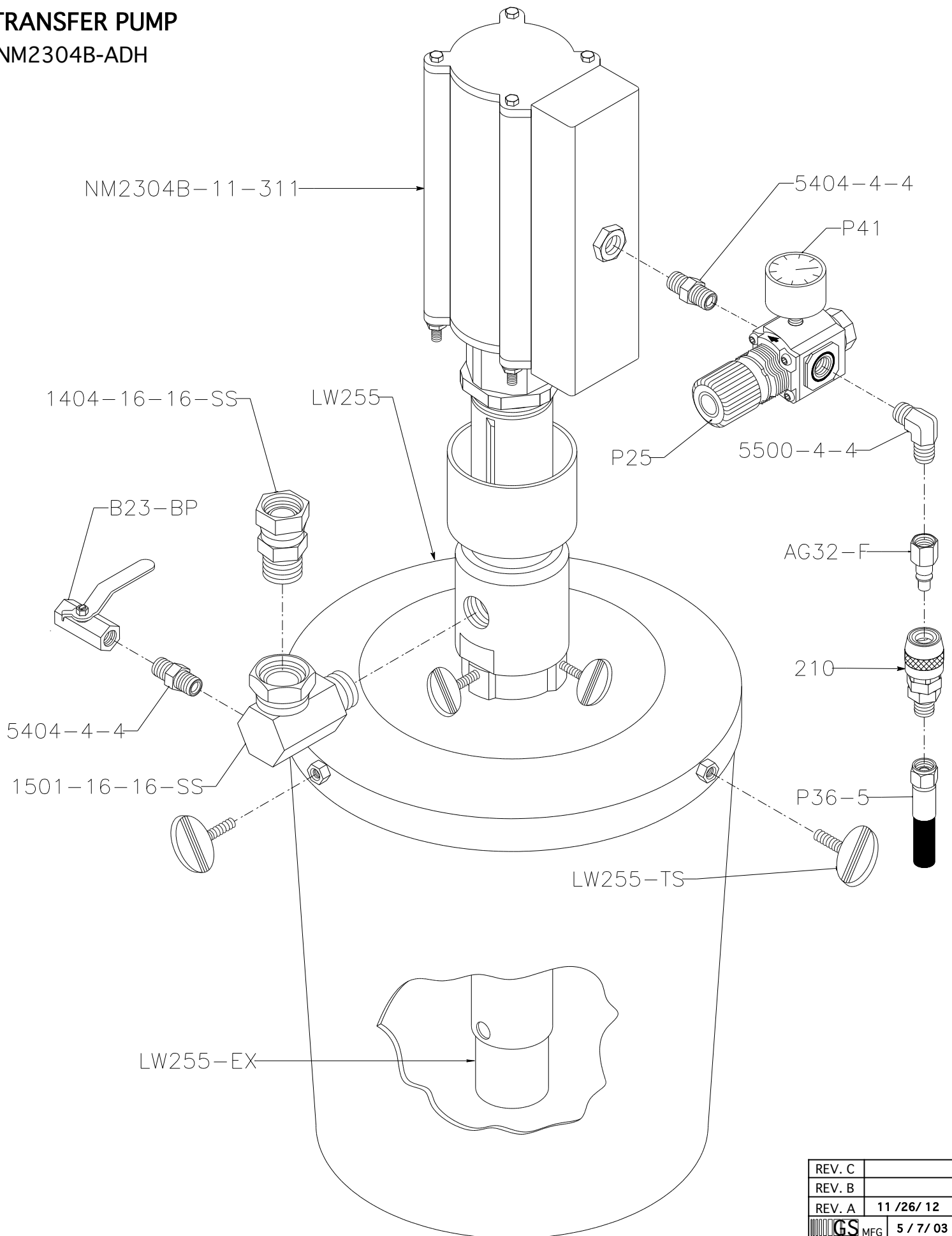
# RAM / TRANSFER PUMP SHUTTLE ASSEMBLY




REV. C	
REV. B	
REV. A	12/17/01

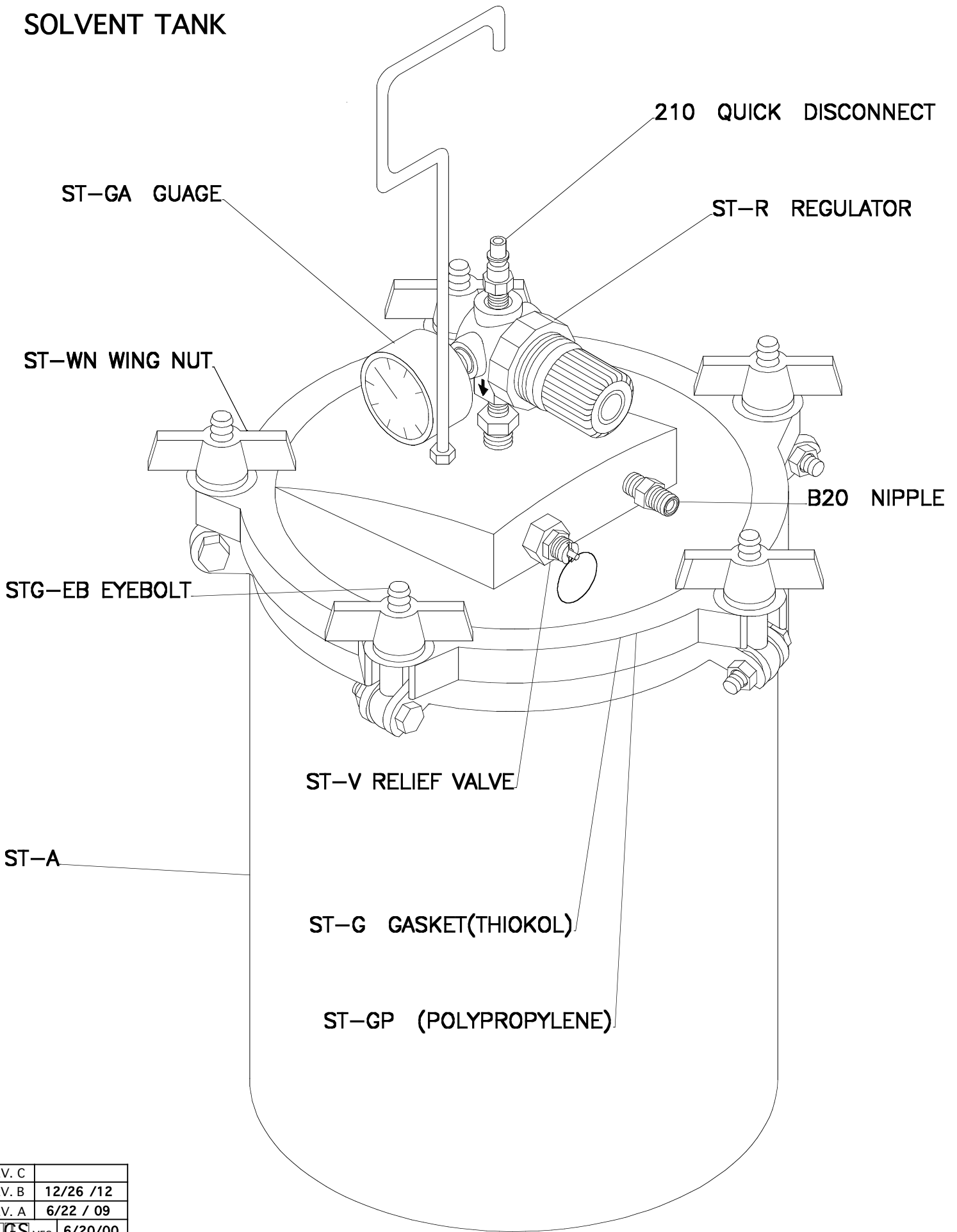
# TRANSFER PUMP


## NM2304B-ADH



REV. C	
REV. B	
REV. A	11 / 26 / 12
 MFG	5 / 7 / 03

# SOLVENT TANK



REV. C	
REV. B	12/26 /12
REV. A	6/22 / 09
 GS MFG	6/20/00