

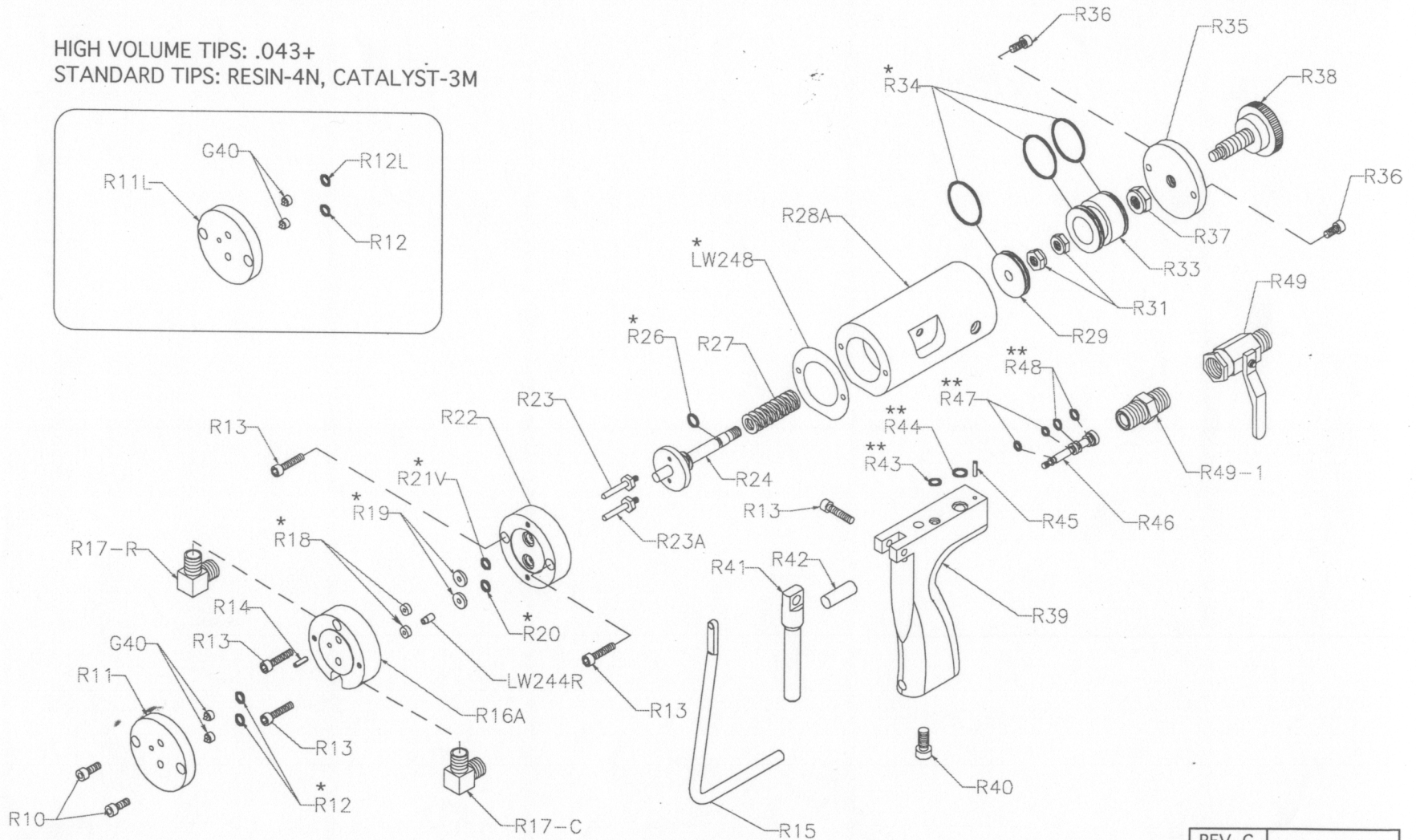
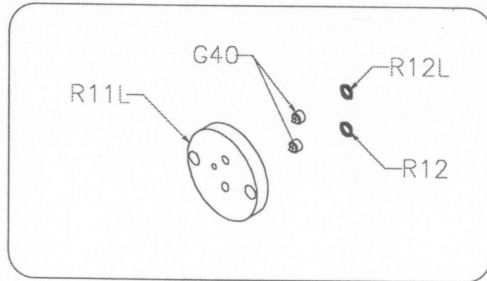
# RASCAL GUN (MEKP AIR-ASSIST)


REPAIR KIT: \* GUN KIT:R53

\*\* TRIGGER KIT:R54

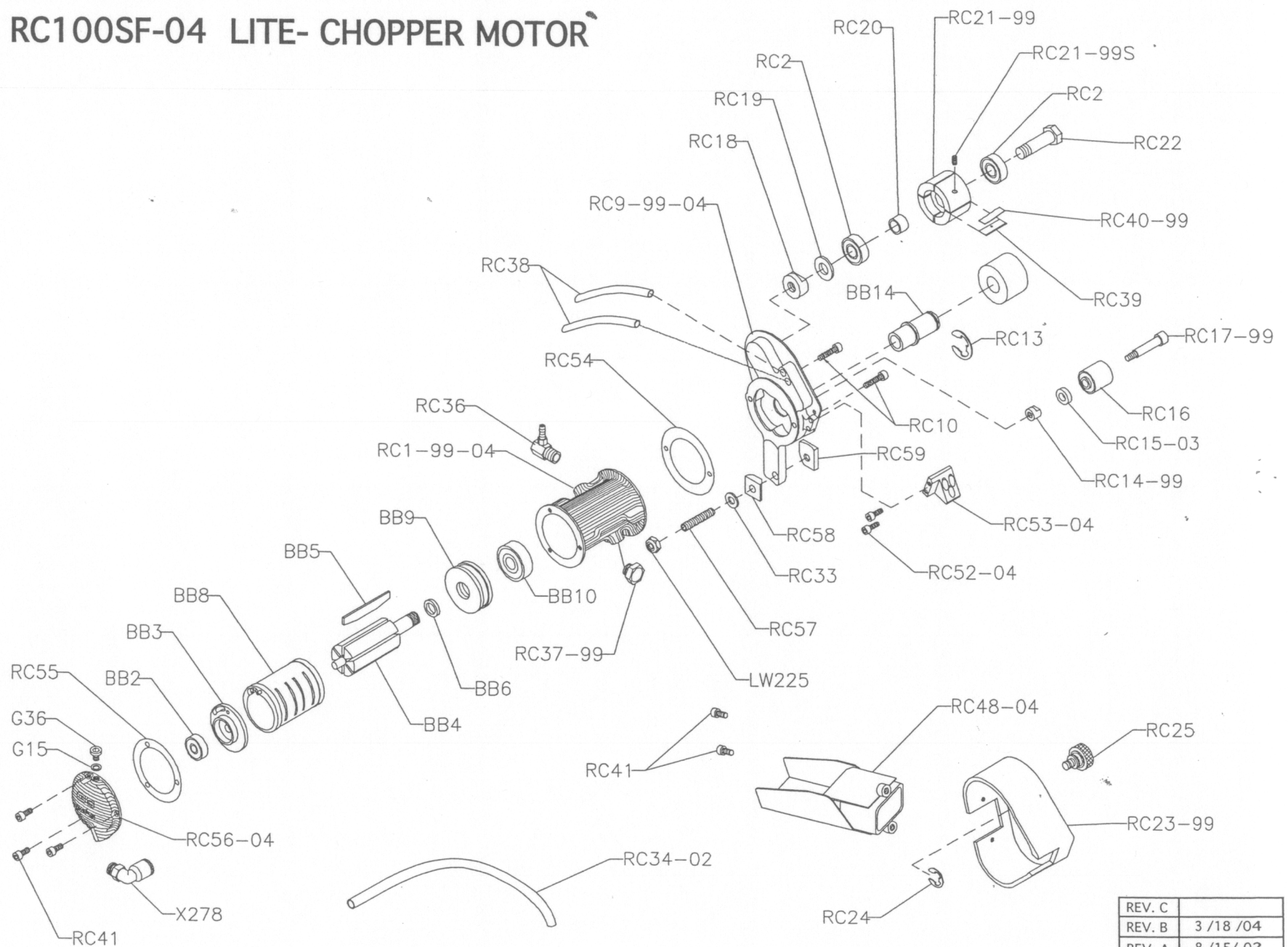
HIGH VOLUME TIPS: .043+


STANDARD TIPS: RESIN-4N, CATALYST-3M



|   |          |
|---|----------|
| REV. C  |          |
| REV. B  | 12/12/06 |
| REV. A  | 2/13/06  |
|  MFG | 5/6/03   |

# RC100SF-04 LITE- CHOPPER MOTOR



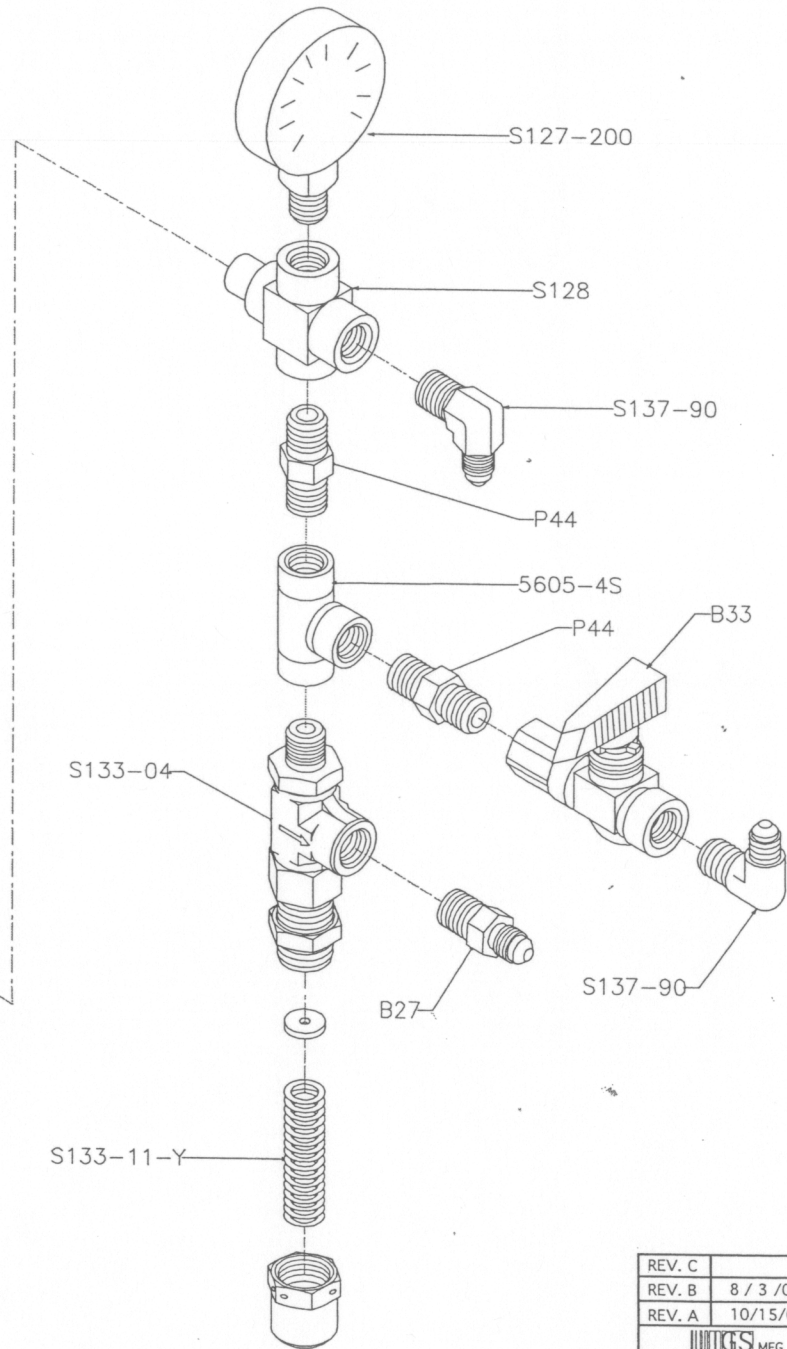
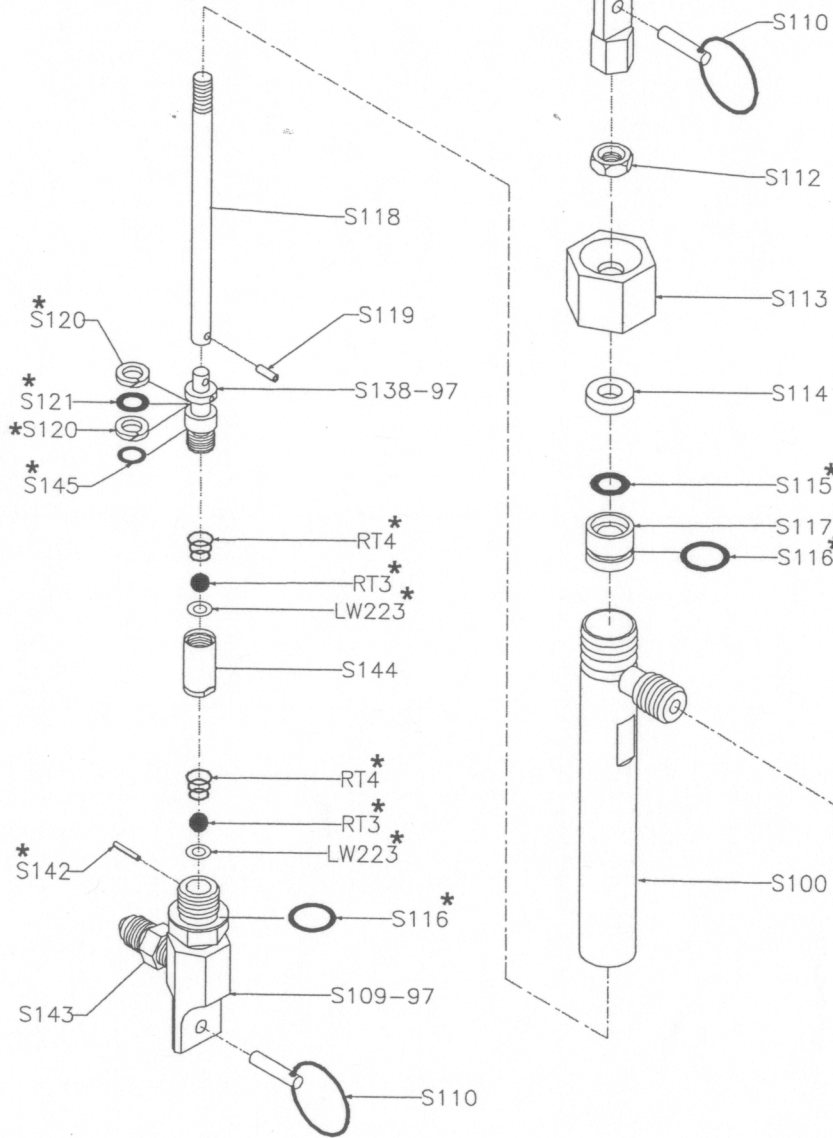
|   |         |
|---|---------|
| REV. C  |         |
| REV. B  | 3/18/04 |
| REV. A  | 8/15/02 |
|  |         |

# S1000-200-04

REBUILD KITS:

\* S10097-RK - PUMP

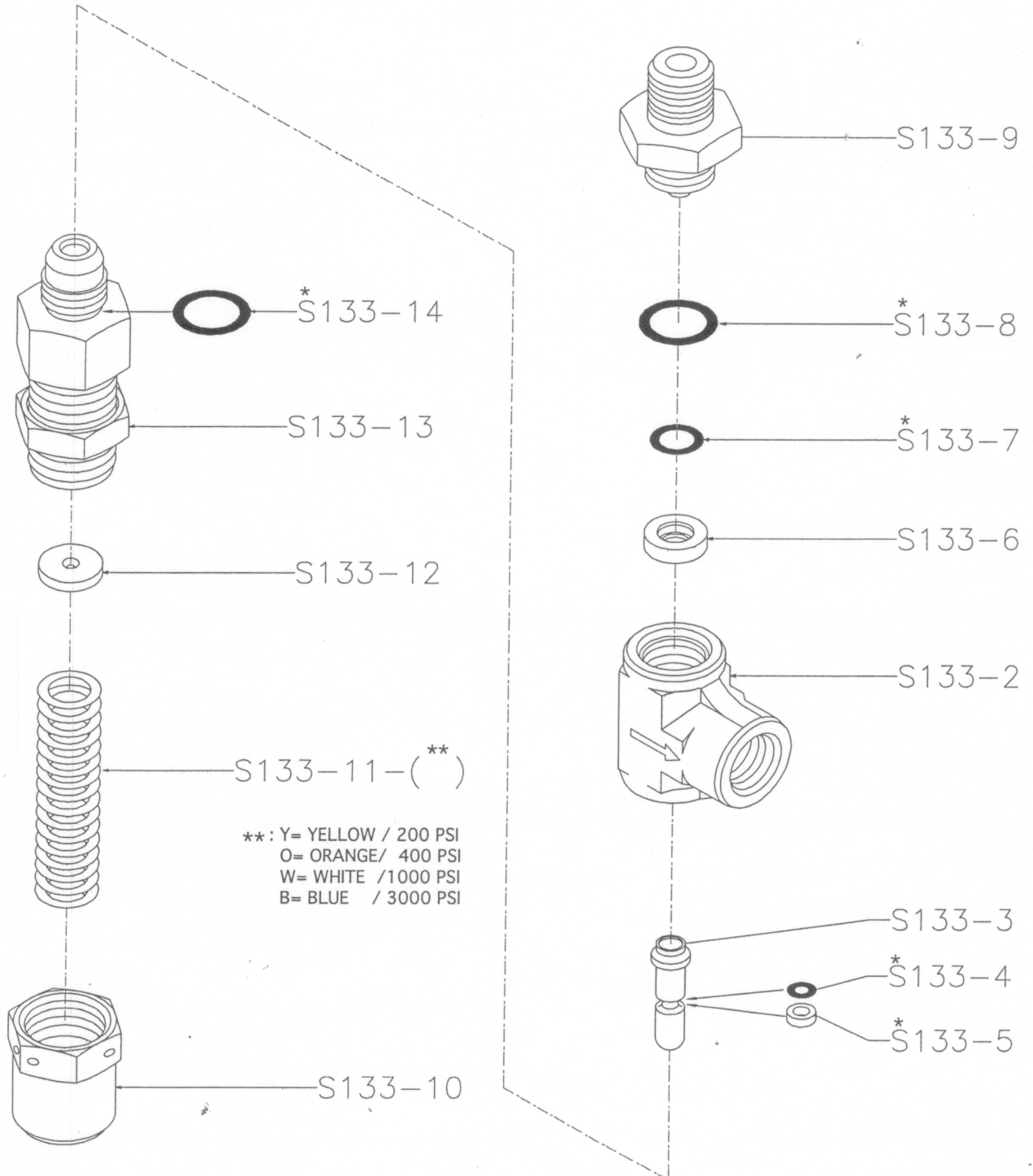
S133-RK-04 - RELIEF VALVE




|        |            |
|--------|------------|
| REV. C |            |
| REV. B | 8 / 3 / 04 |
| REV. A | 10/15/01   |
|        |            |

# S133-04 RELIEF VALVE

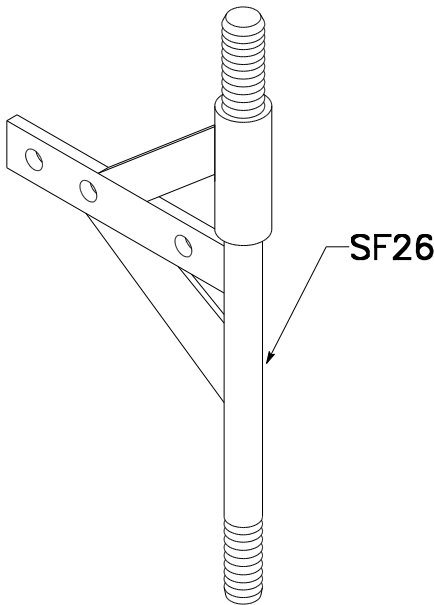
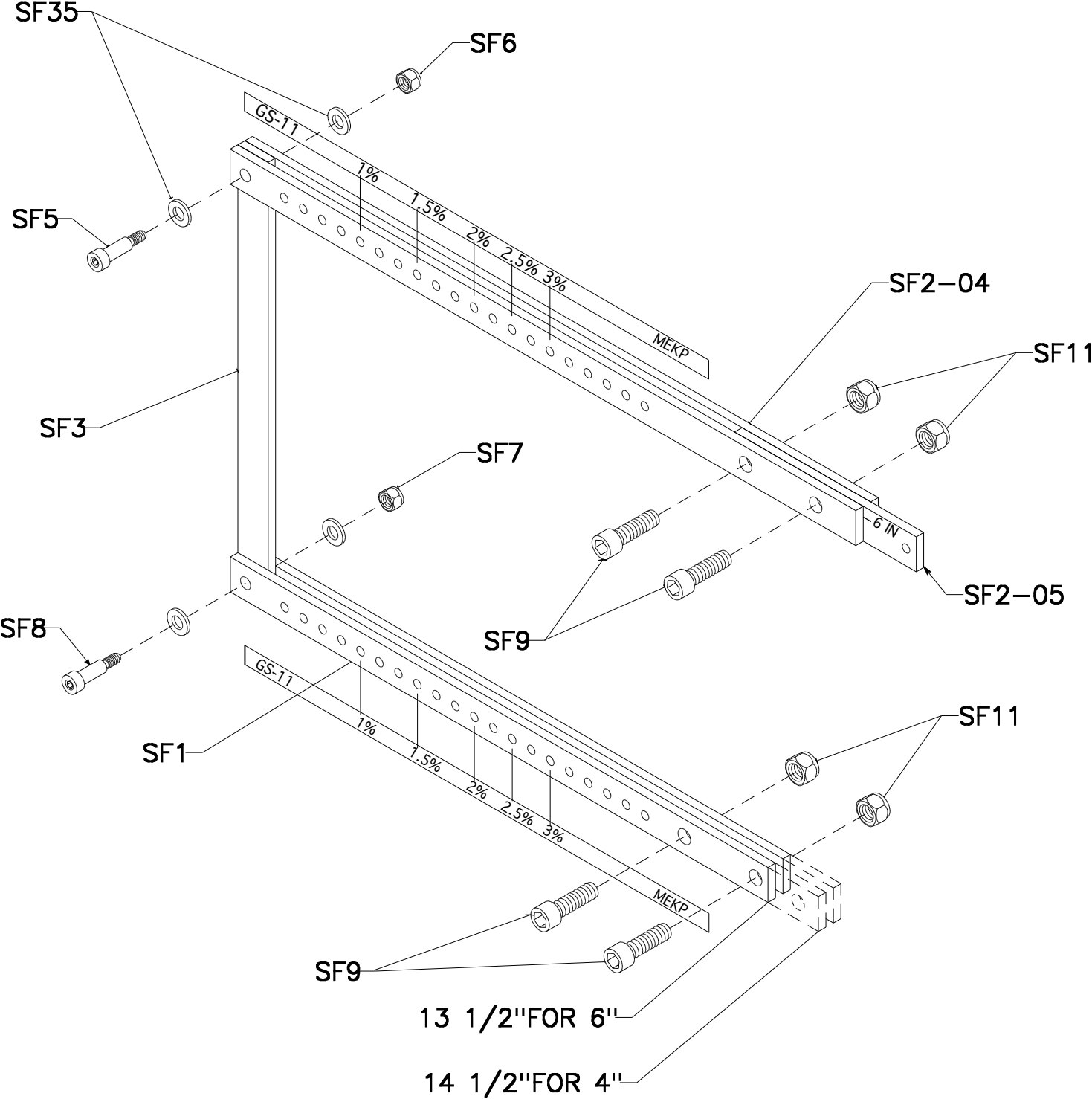
\* REBUILD KIT: S133-RK-04



|   |            |
|---|------------|
| REV. C  |            |
| REV. B  |            |
| REV. A  |            |
|  MFG | 8 / 3 / 04 |

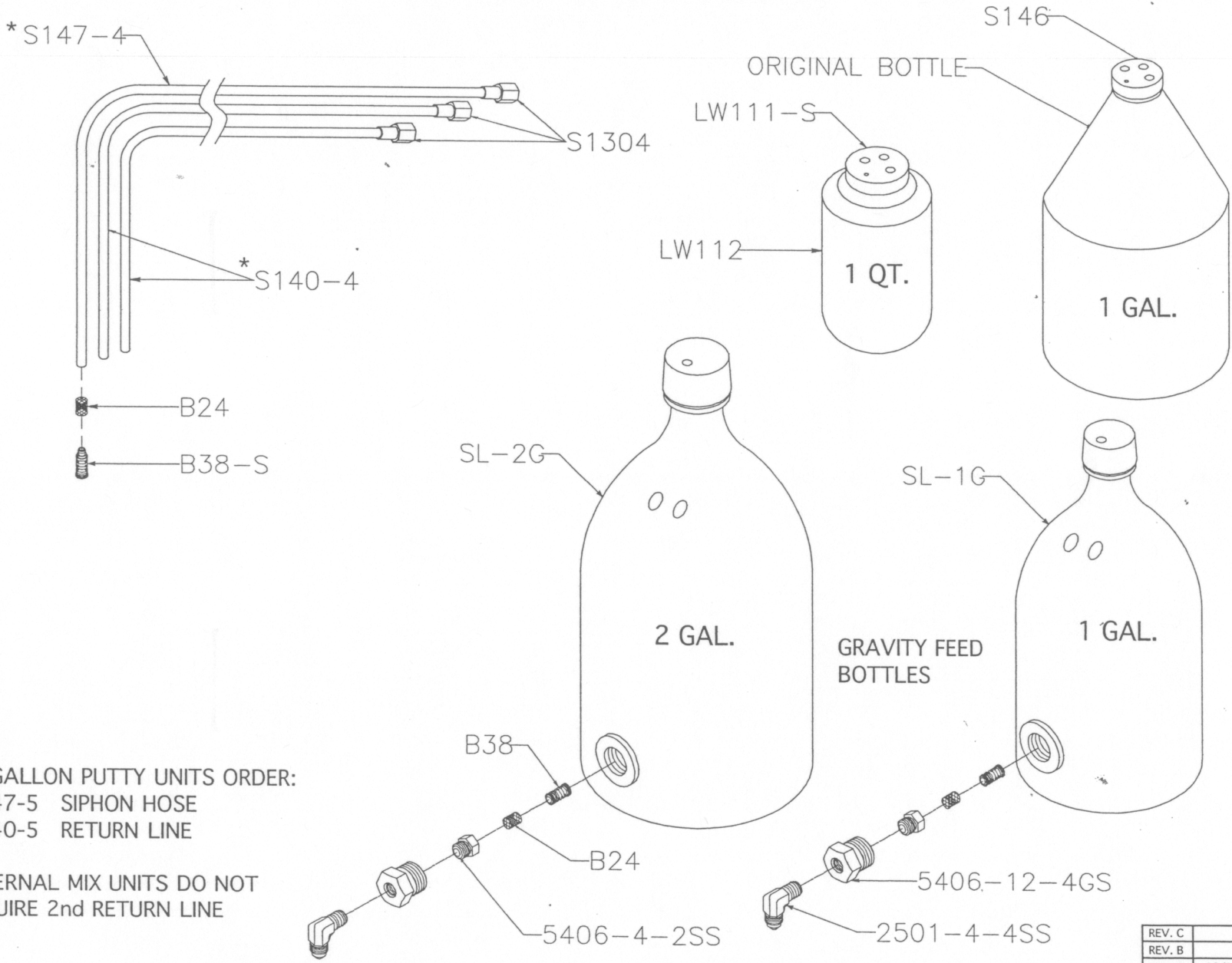
# SLAVE ARM/ BRACKET

11:1 / 4" AIR MOTOR  
 22:1 / 6" AIR MOTOR



|        |          |
|--------|----------|
| REV. C | 11/26/12 |
| REV. B | 3 /9/06  |
| REV. A | 5 /20/03 |
|        |          |

# MEKP SIPHON HOSES / BOTTLES



\*: 55 GALLON PUTTY UNITS ORDER:  
 -S147-5 SIPHON HOSE  
 -S140-5 RETURN LINE  
 EXTERNAL MIX UNITS DO NOT  
 REQUIRE 2nd RETURN LINE

|           |          |
|-----------|----------|
| REV. C    |          |
| REV. B    |          |
| REV. A    | 10/15/01 |
| HIGGS MFG |          |

# RESIN PUMPS

11:1

22:1

65465-GS

65665-GS

Y85-29-C

90102

90109

90096

90102

90163-4

90109

90531-GS

90102

90531-GS

90096

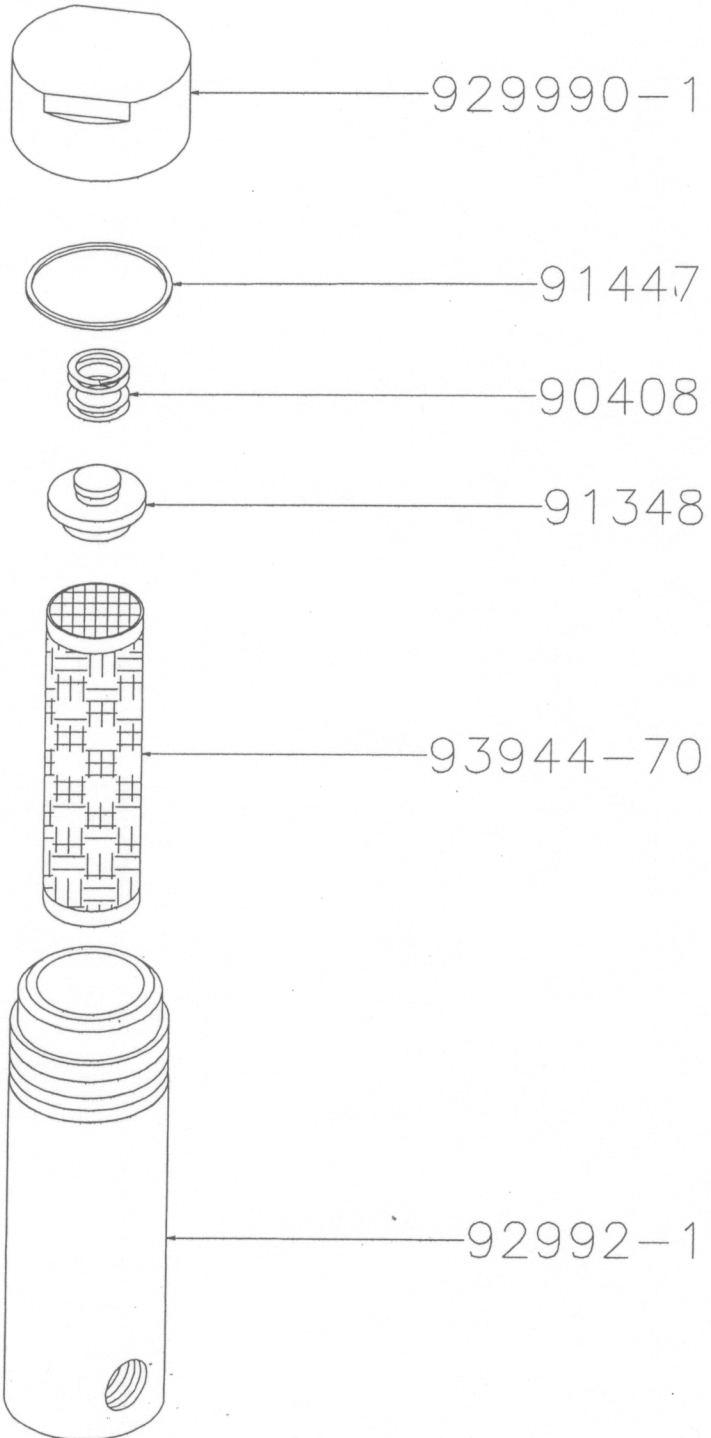
90109

90096

66300R43

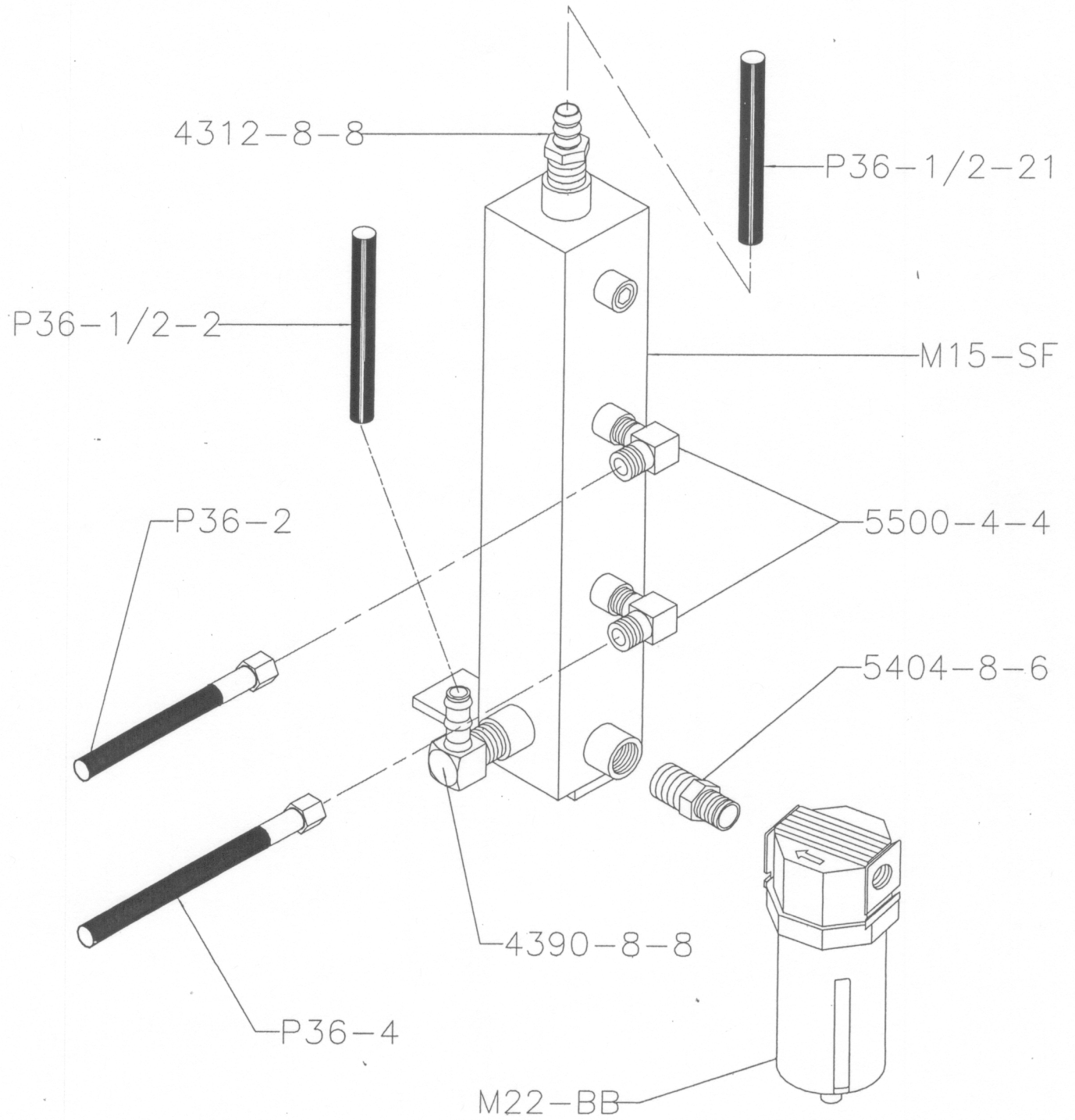


# P31 MATERIAL FILTER

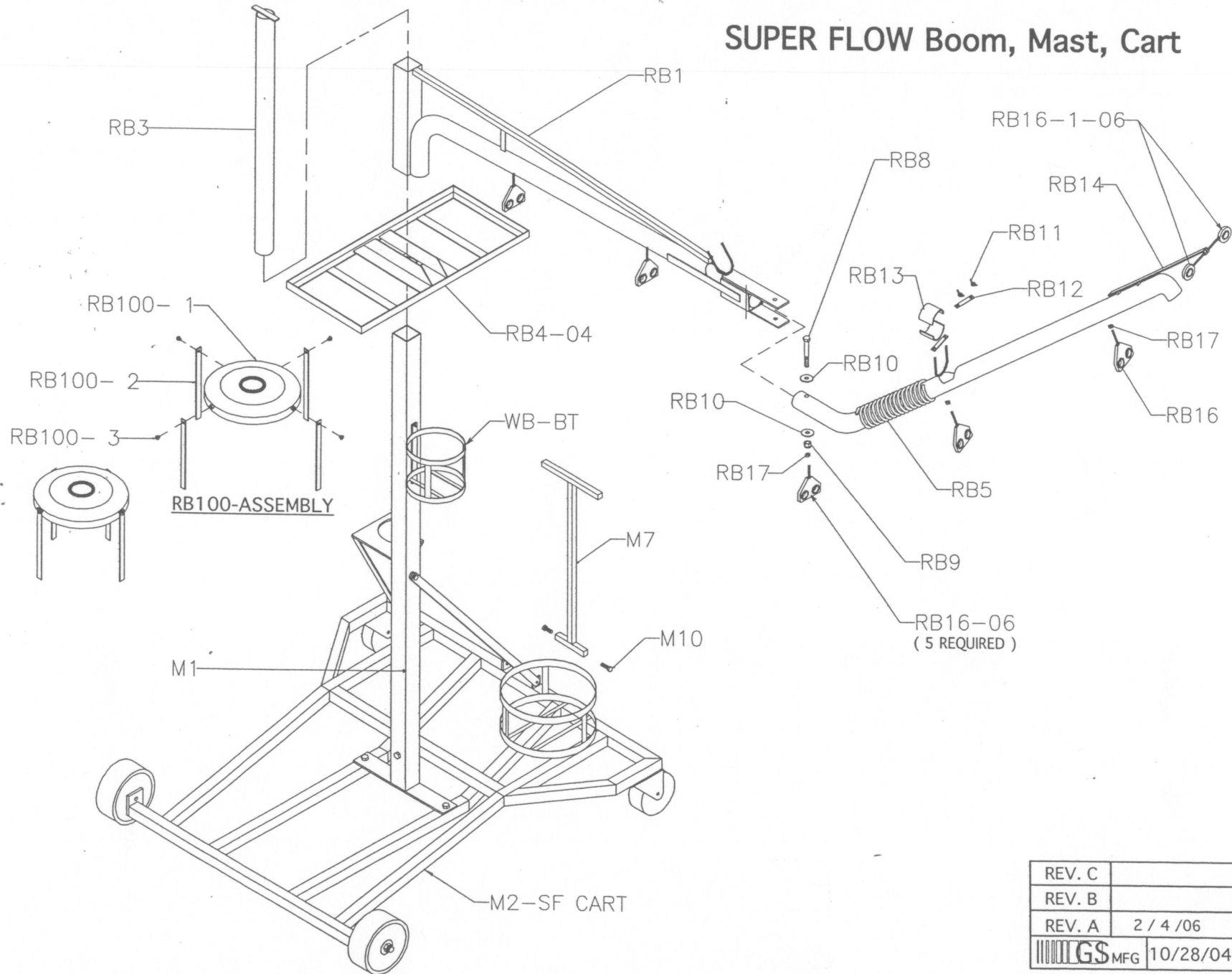





# M15-SF AIR MANIFOLD ASSEMBLY

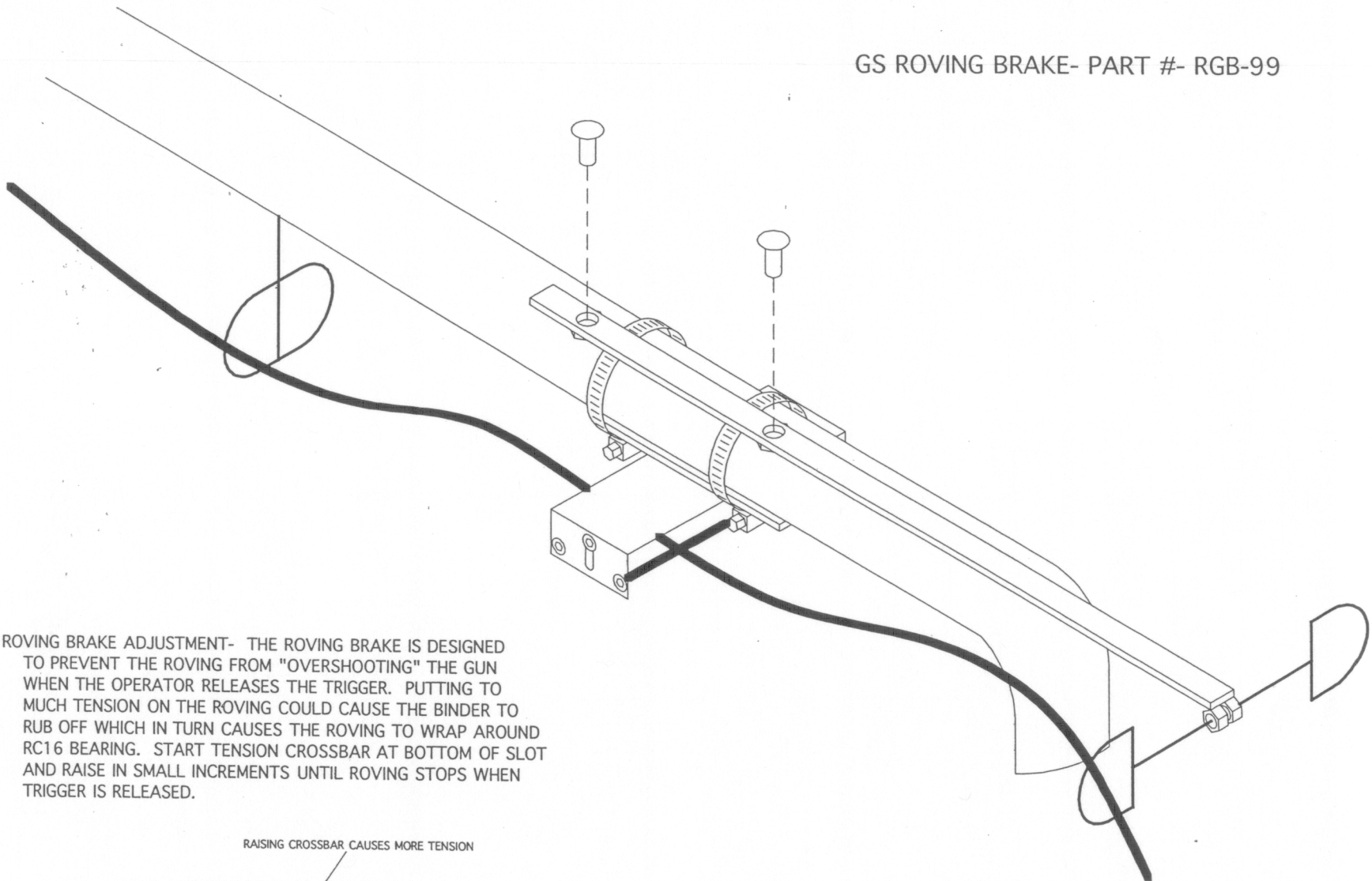


# SUPER FLOW Boom, Mast, Cart



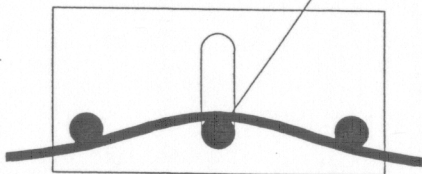
|   |            |
|---|------------|
| REV. C  |            |
| REV. B  |            |
| REV. A  | 2 / 4 / 06 |
|  IGS MFG | 10/28/04   |

GS ROVING BRAKE- PART #- RGB-99



ROVING BRAKE ADJUSTMENT- THE ROVING BRAKE IS DESIGNED TO PREVENT THE ROVING FROM "OVERSHOOTING" THE GUN WHEN THE OPERATOR RELEASES THE TRIGGER. PUTTING TOO MUCH TENSION ON THE ROVING COULD CAUSE THE BINDER TO RUB OFF WHICH IN TURN CAUSES THE ROVING TO WRAP AROUND RC16 BEARING. START TENSION CROSSBAR AT BOTTOM OF SLOT AND RAISE IN SMALL INCREMENTS UNTIL ROVING STOPS WHEN TRIGGER IS RELEASED.

RAISING CROSSBAR CAUSES MORE TENSION



# ROVING BRAKE-RGB-99

