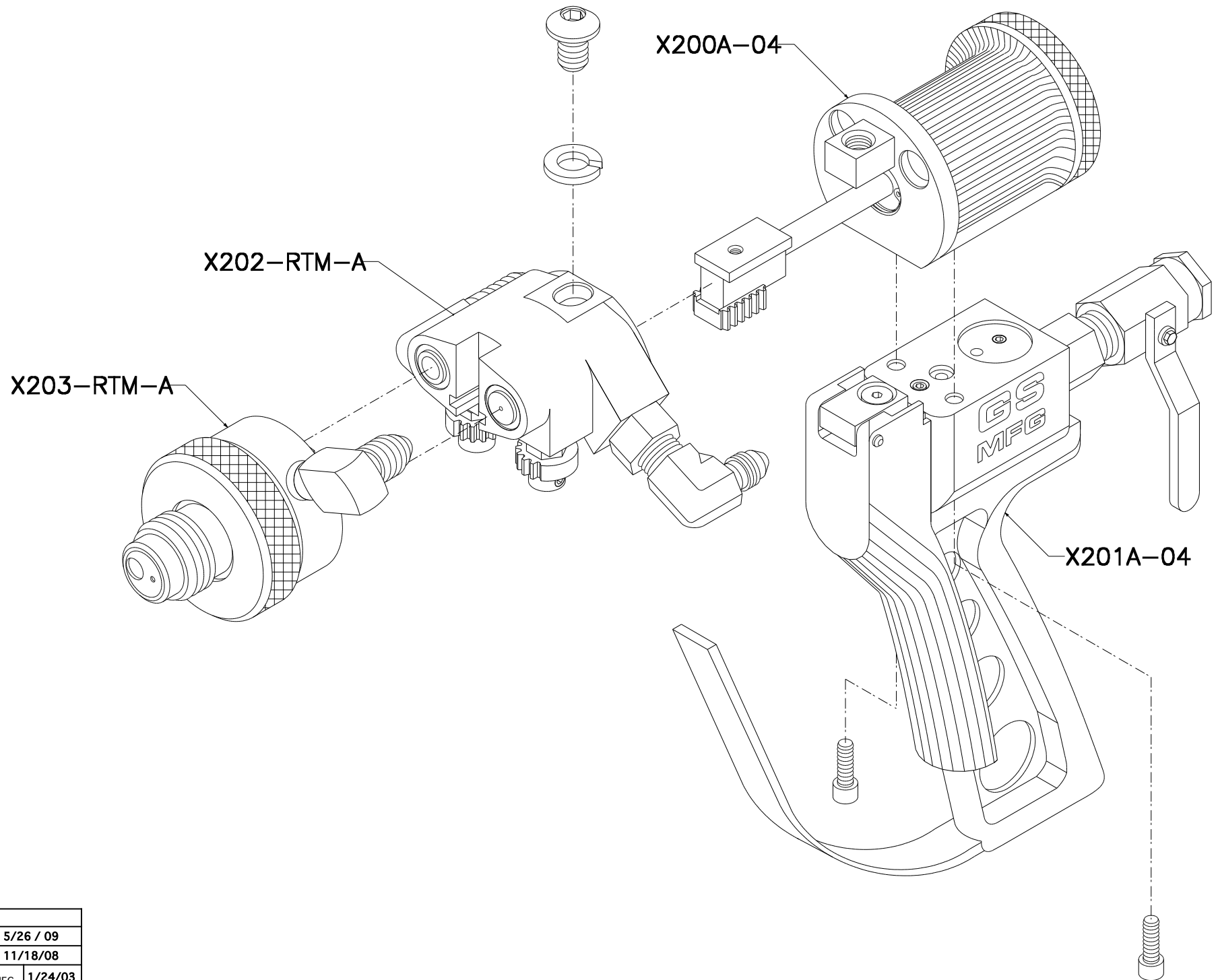



X2004 RTM X-GUN SUB ASSEMBLIES

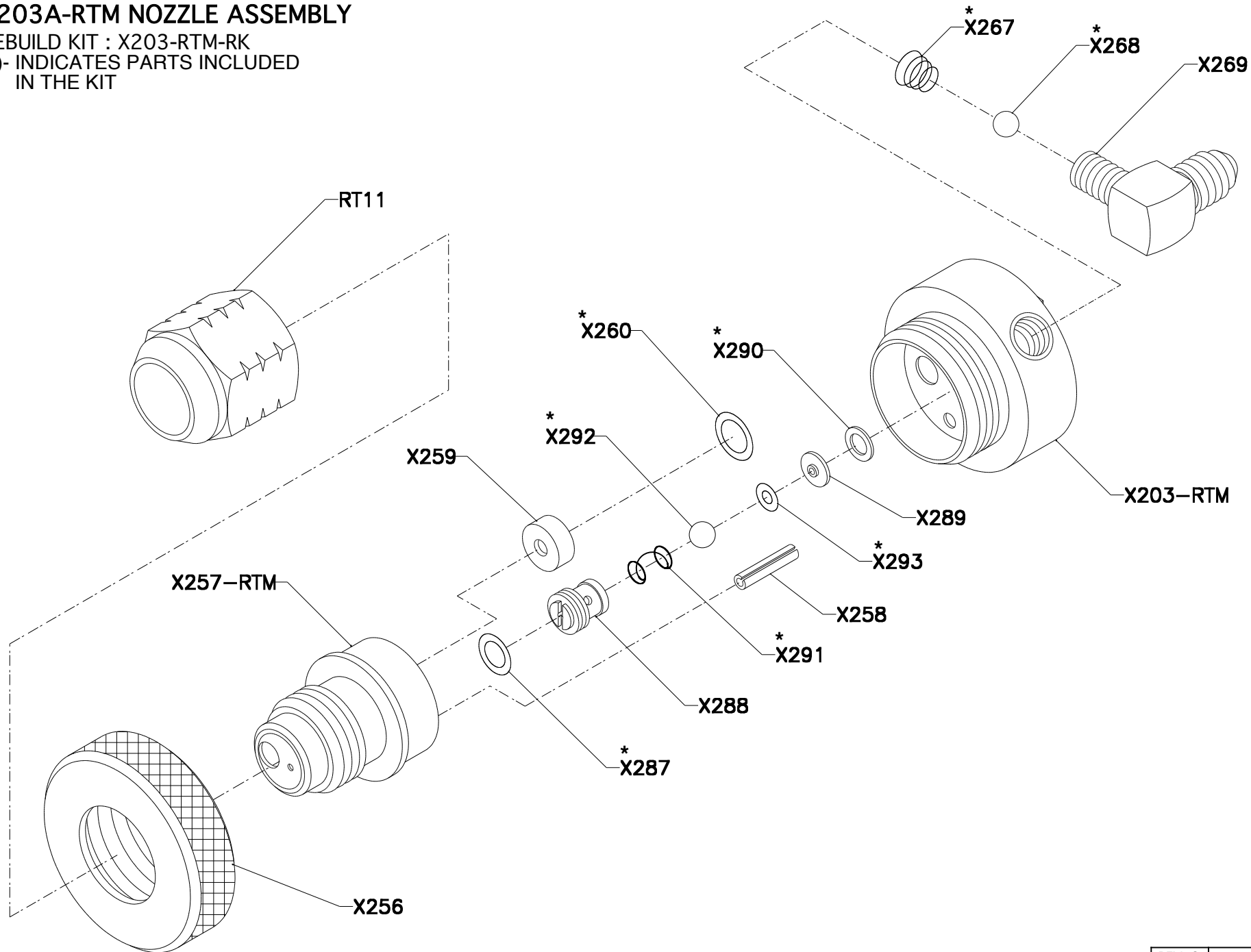



REV. C	
REV. B	5/26 / 09
REV. A	11/18/08
 GS MFG	1/24/03

X203A-RTM NOZZLE ASSEMBLY

REBUILD KIT : X203-RTM-RK

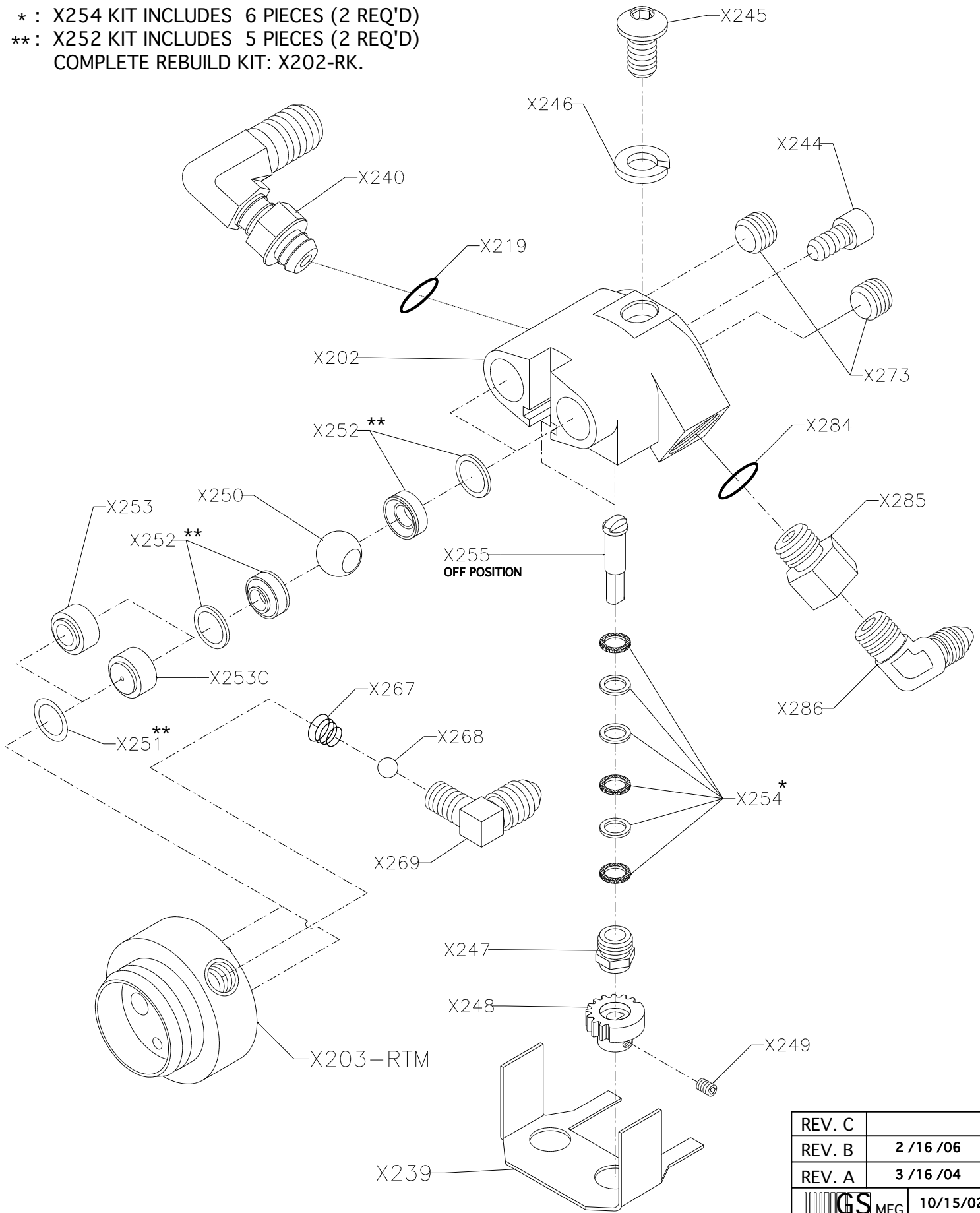
(*)- INDICATES PARTS INCLUDED
IN THE KIT




REV. C	
REV. B	
REV. A	4 /29/08
 MFG	3 /6/02

X202-RTM FLUID SECTION ASSEMBLY

* : X254 KIT INCLUDES 6 PIECES (2 REQ'D)
 ** : X252 KIT INCLUDES 5 PIECES (2 REQ'D)
 COMPLETE REBUILD KIT: X202-RK.

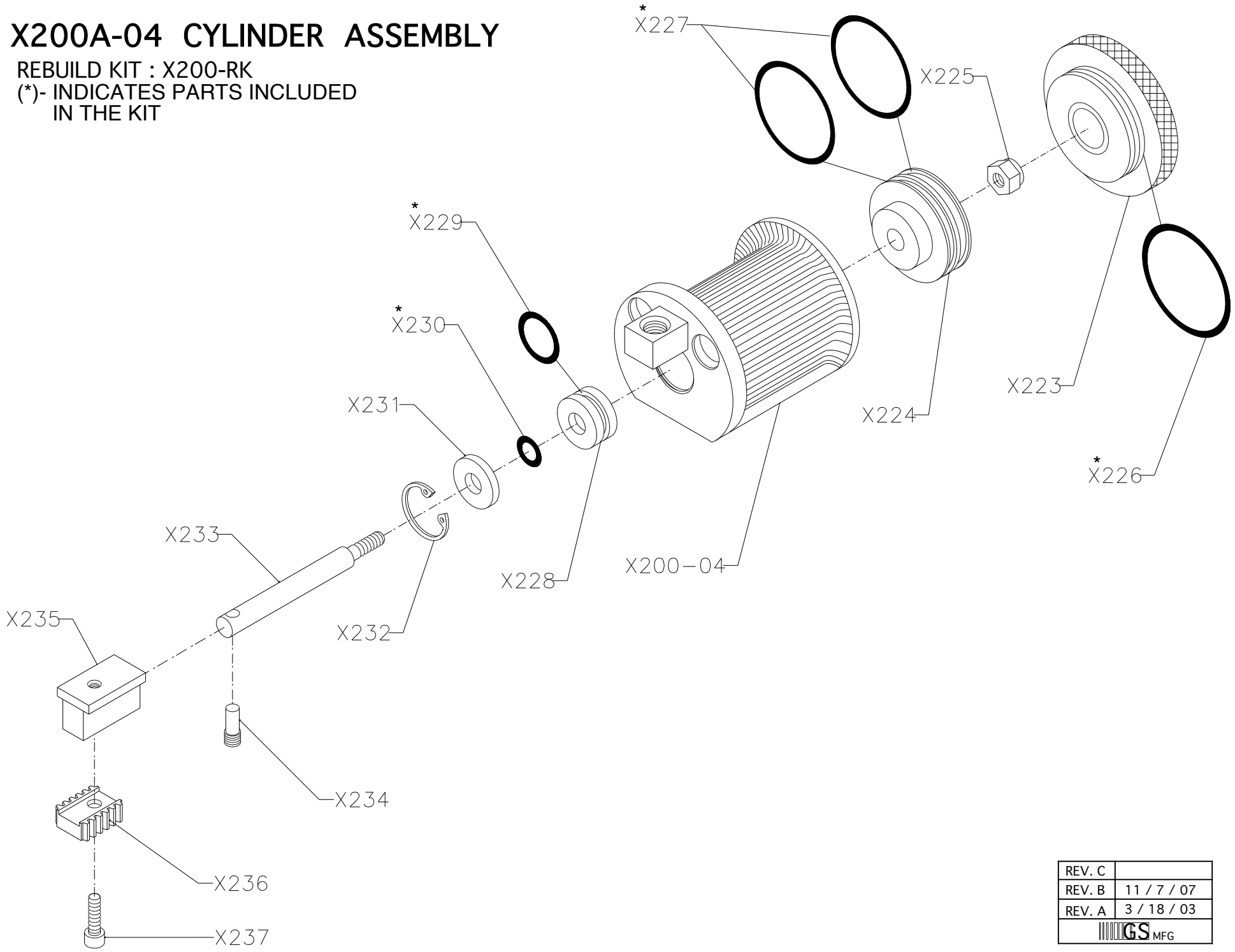


REV. C	
REV. B	2 /16 /06
REV. A	3 /16 /04
 MFG	10/15/02

X200A-04 CYLINDER ASSEMBLY

REBUILD KIT : X200-RK

(*)- INDICATES PARTS INCLUDED
IN THE KIT

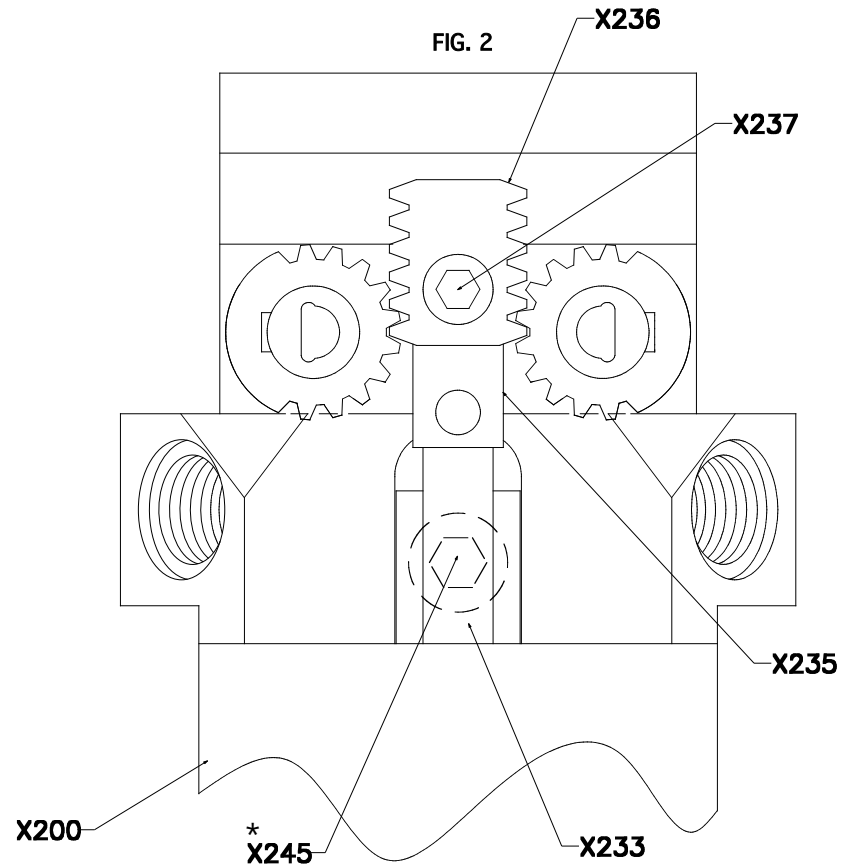
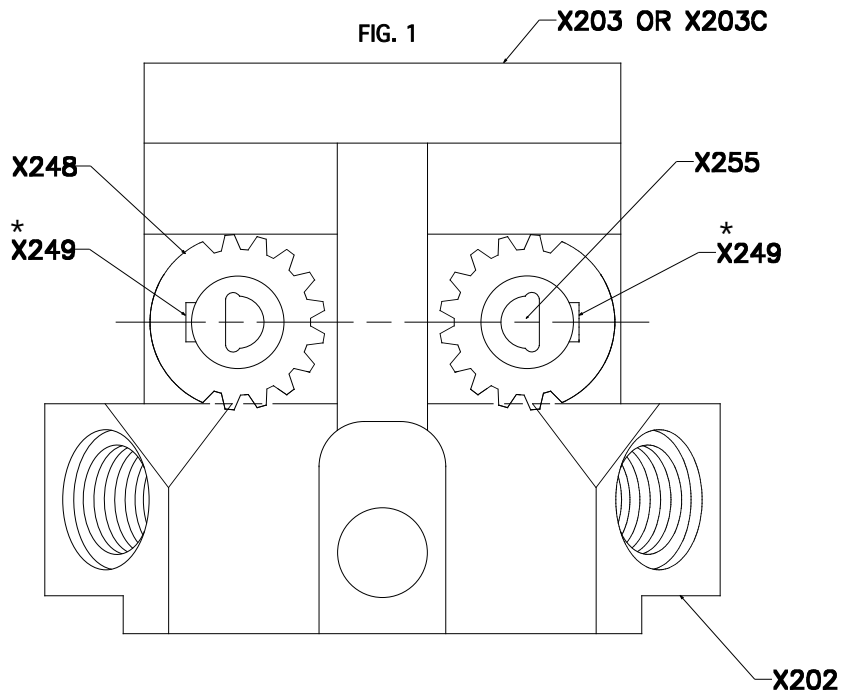


REV. C	
REV. B	11 / 7 / 07
REV. A	3 / 18 / 03
GS MFG	


ALIGNMENT OF X202 FLUID SECTION ASSEMBLY TO X200 CYLINDER ASSEMBLY

1. BE SURE THAT X249(*) SET SCREW IS TIGHTENED TO THE FLAT ON X255 STEM AND FACING OUTWARDS.
2. IF THIS IS DONE CORRECTLY, THE BALLS WILL BE IN THE OFF POSITION. THE TIMING OF THE GEARS IS VERY IMPORTANT SO THAT THE X236 RACK WILL SLIDE INTO POSITION AS SHOWN IN FIG. 2.

3. ATTACH X200 CYLINDER ASSY. TO X202 ASSY. LEAVING THE X245(*) BOLT LOOSE. MAKE SURE X233 SHAFT IS PUSHED ALL THE WAY FORWARD.
4. INSERT X236 RACK ONTO X235 T-NUT ALIGNED WITH X248 GEARS AS SHOWN IN FIG. 2.
5. AFTER X236 RACK IS SEATED ONTO X235 T-NUT TIGHTEN X237(*) AND X245(*) BOLTS.



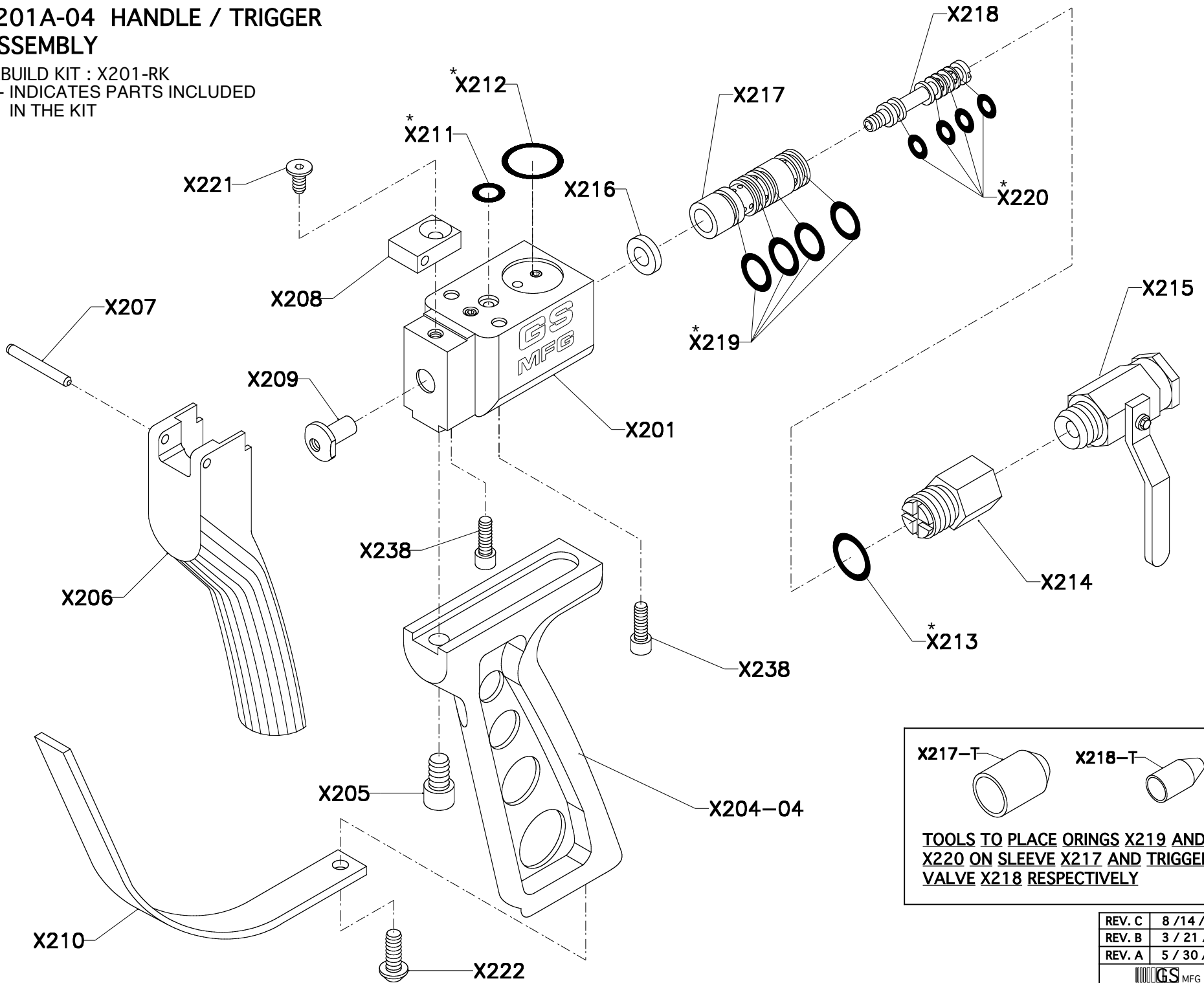
**NOTE; * :USE BLUE LOCTITE 242
ON THE THREADS**

REV. C	
REV. B	7 / 30 / 15
REV. A	2 / 16 / 06
 MFG	12/21/04

X201A-04 HANDLE / TRIGGER ASSEMBLY

REBUILD KIT : X201-RK

(*)- INDICATES PARTS INCLUDED IN THE KIT



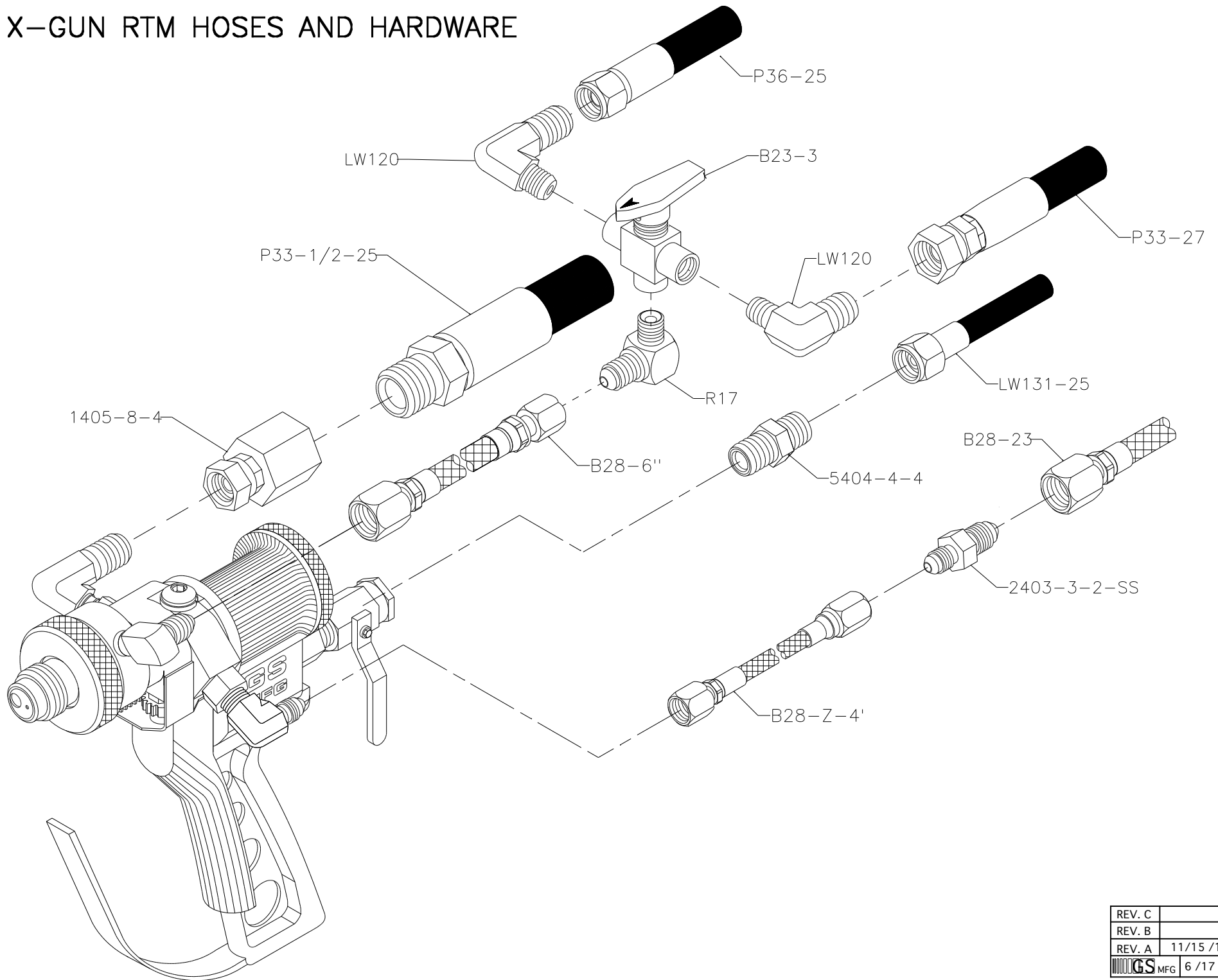
X217-T


X218-T

TOOLS TO PLACE ORINGS X219 AND X220 ON SLEEVE X217 AND TRIGGER VALVE X218 RESPECTIVELY

REV. C	8 / 14 / 14
REV. B	3 / 21 / 04
REV. A	5 / 30 / 03

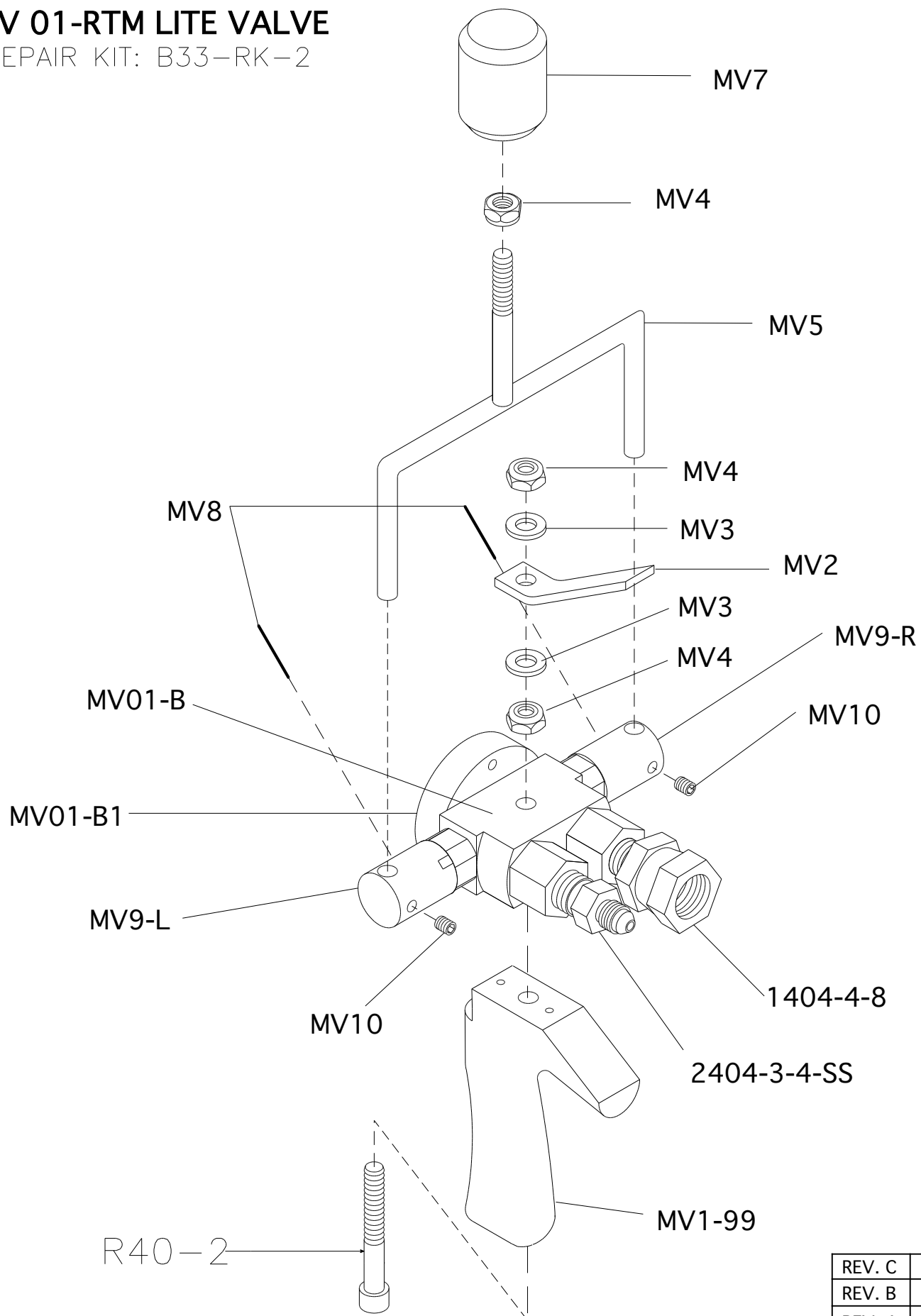
X-GUN RTM HOSES AND HARDWARE




REV. C	
REV. B	
REV. A	11/15/12
 MFG	6/17/09

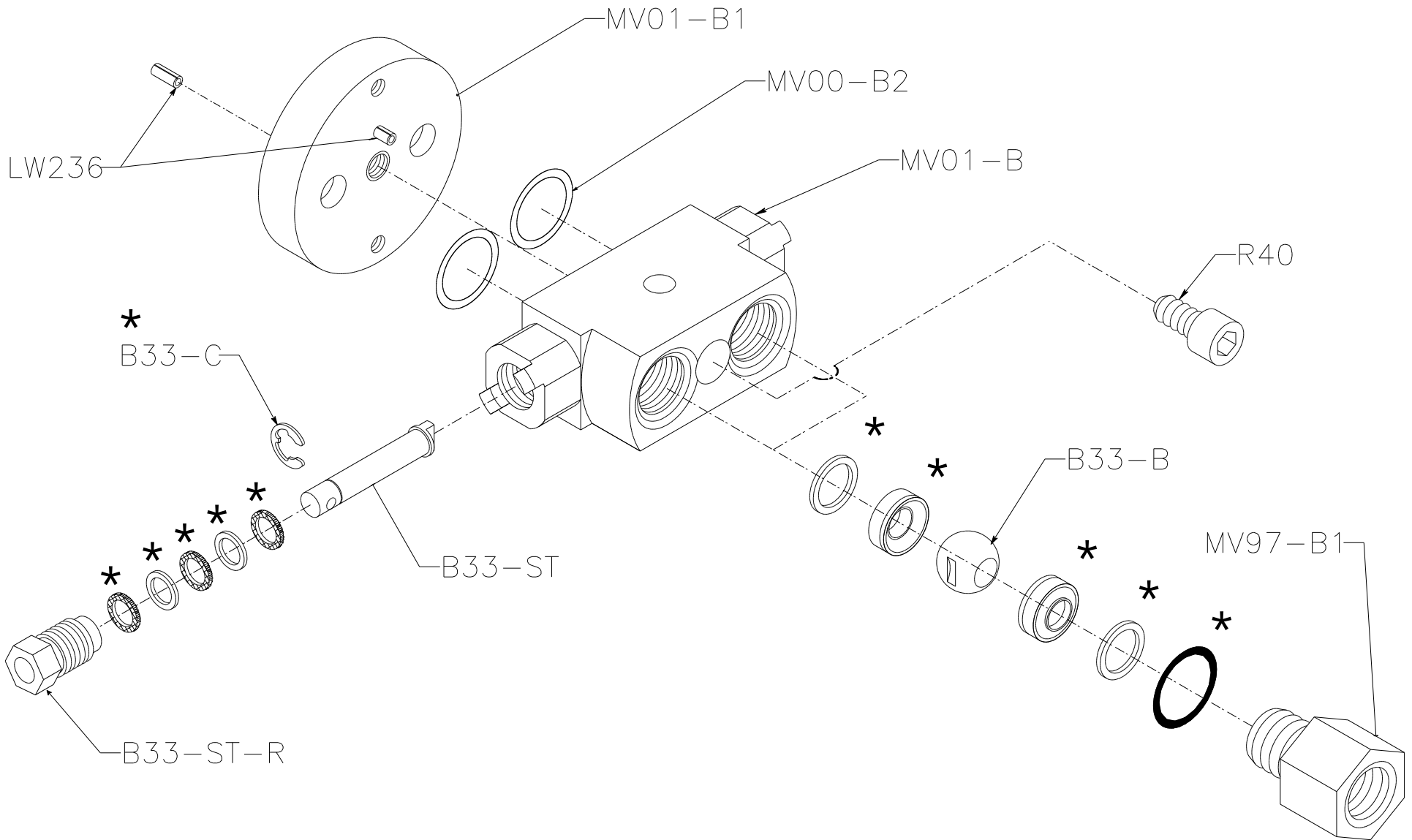
MV 01-RTM LITE VALVE

REPAIR KIT: B33-RK-2



REV. C	12/29/08
REV. B	11/25/03
REV. A	1/15/03
	

MV01-BA BODY ASSEMBLY



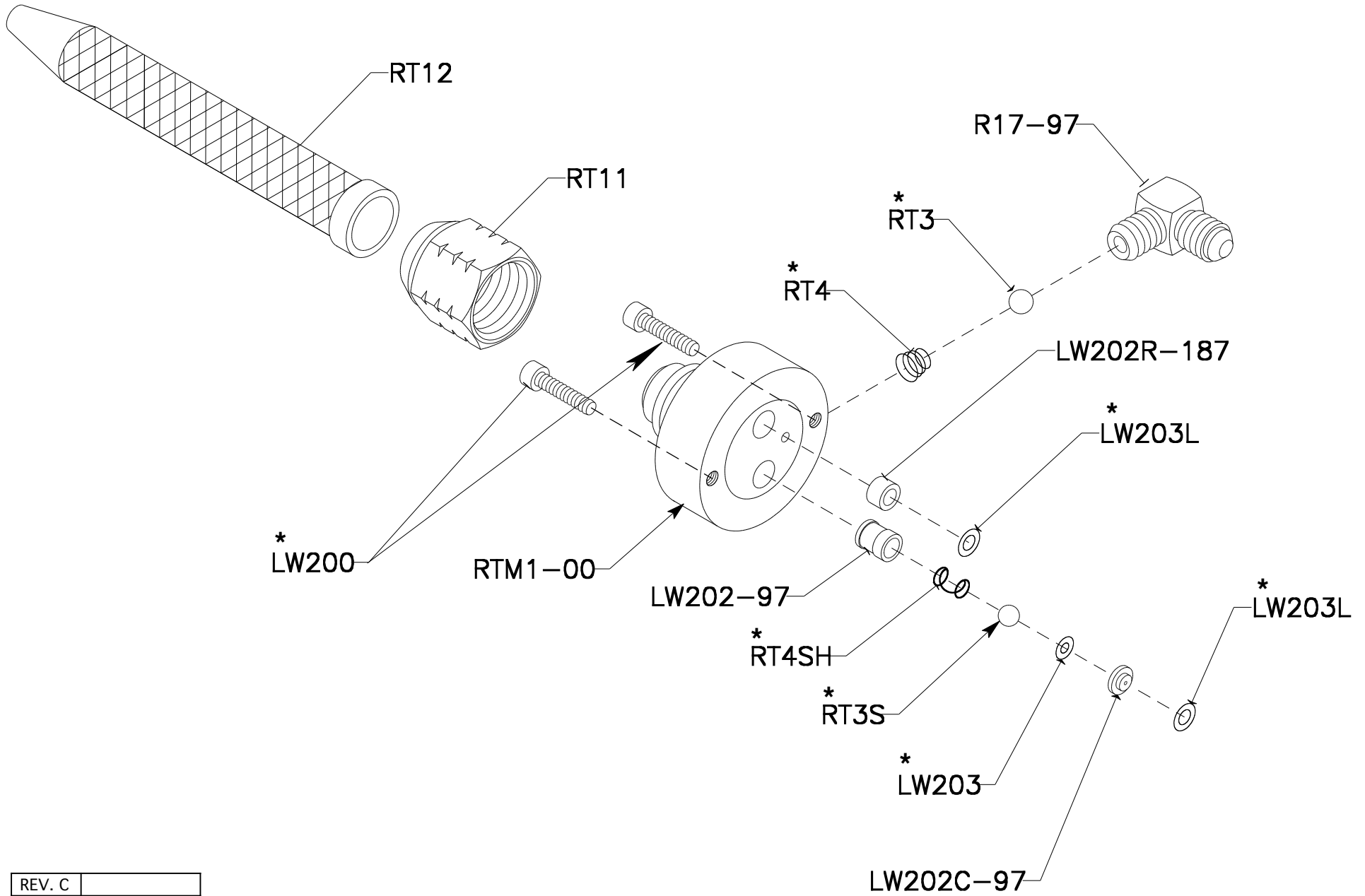
*: REPAIR KIT: B33-RK-2


REV. C	1/ 5 /09
REV. B	7/11/07
REV. A	11/25/03

RTM1-00-A

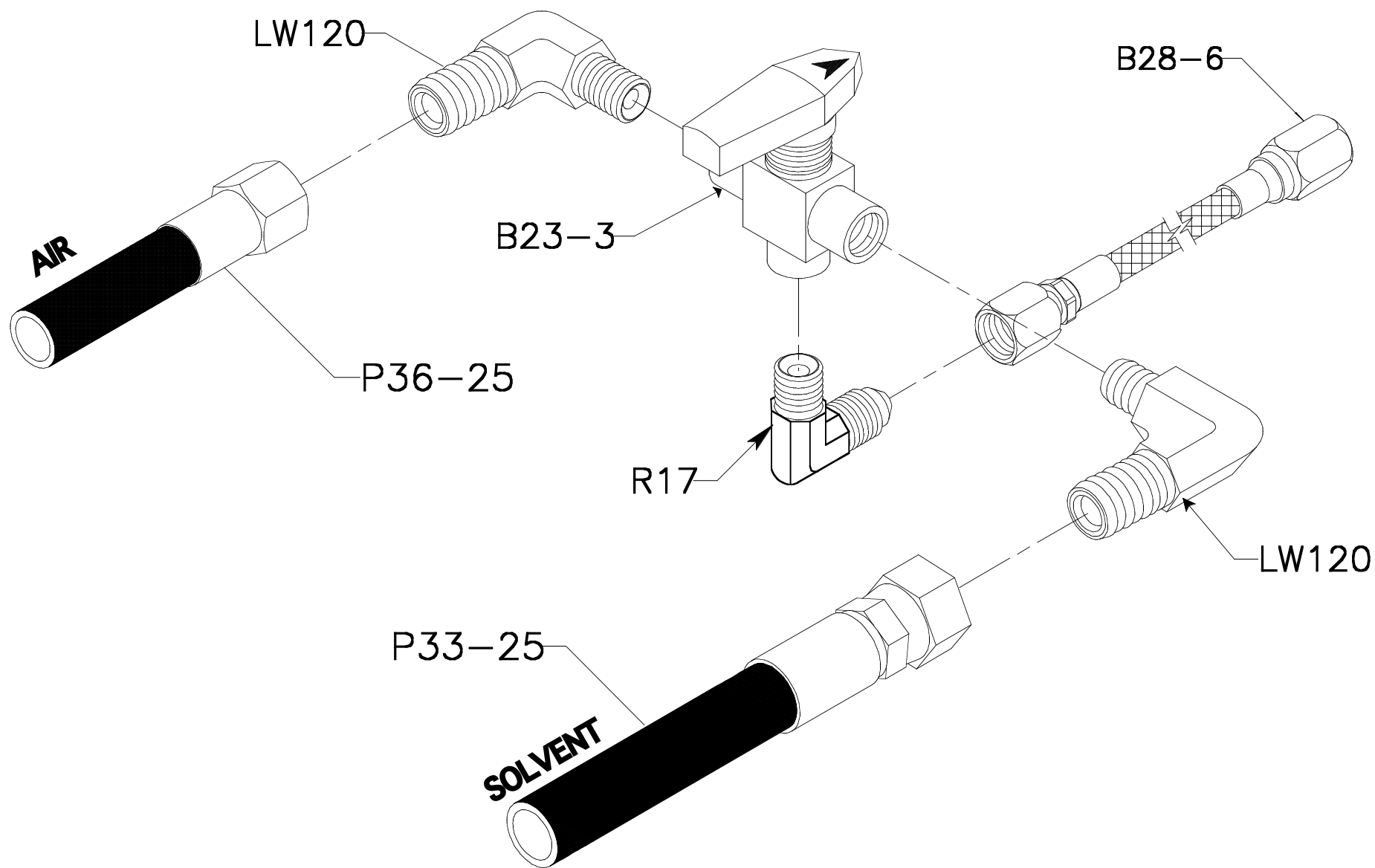
* :RTM1-RK


* :INDICATES PARTS INCLUDED IN KIT



REV. C	
REV. B	9 / 8 /09
REV. A	4 /29/08
 MFG	12/1/04

LW RTM PURGE VALVE ASSEMBLY



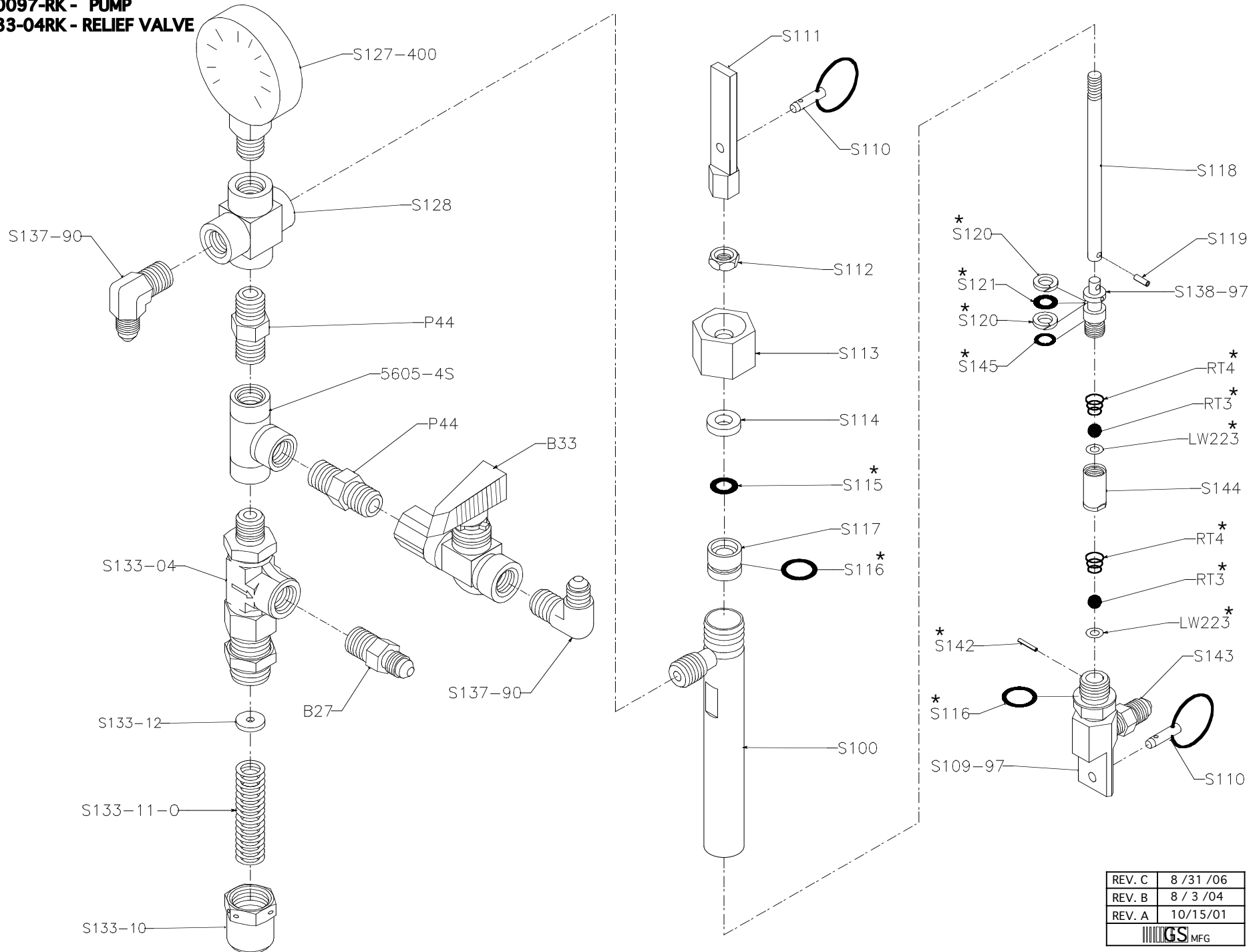
REV. C	
REV. B	
REV. A	2/22/10
 GS MFG	6/20/00

S1000-400-04

REBUILD KITS:

* S10097-RK - PUMP

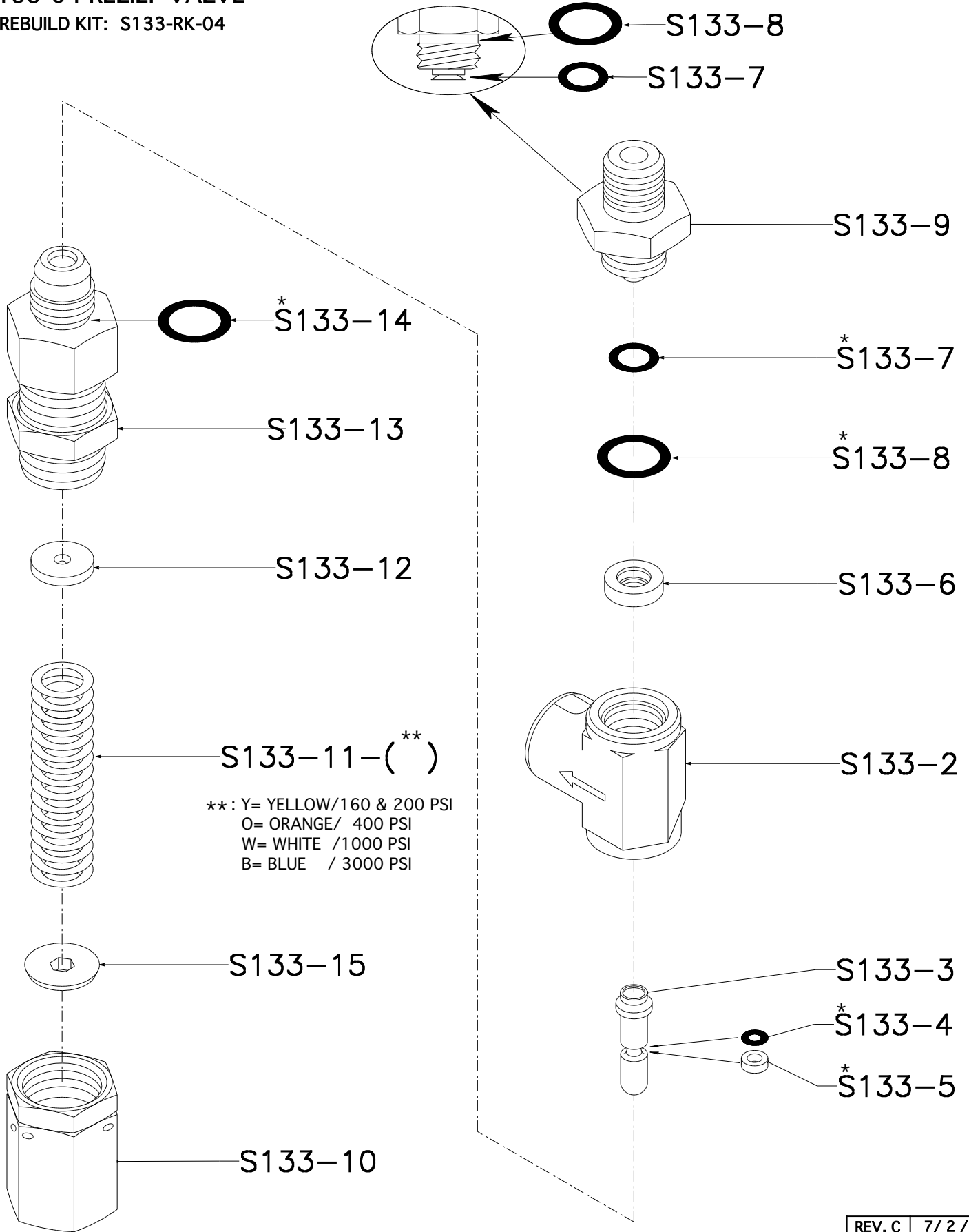
S133-04RK - RELIEF VALVE



REV. C	8 / 31 / 06
REV. B	8 / 3 / 04
REV. A	10 / 15 / 01

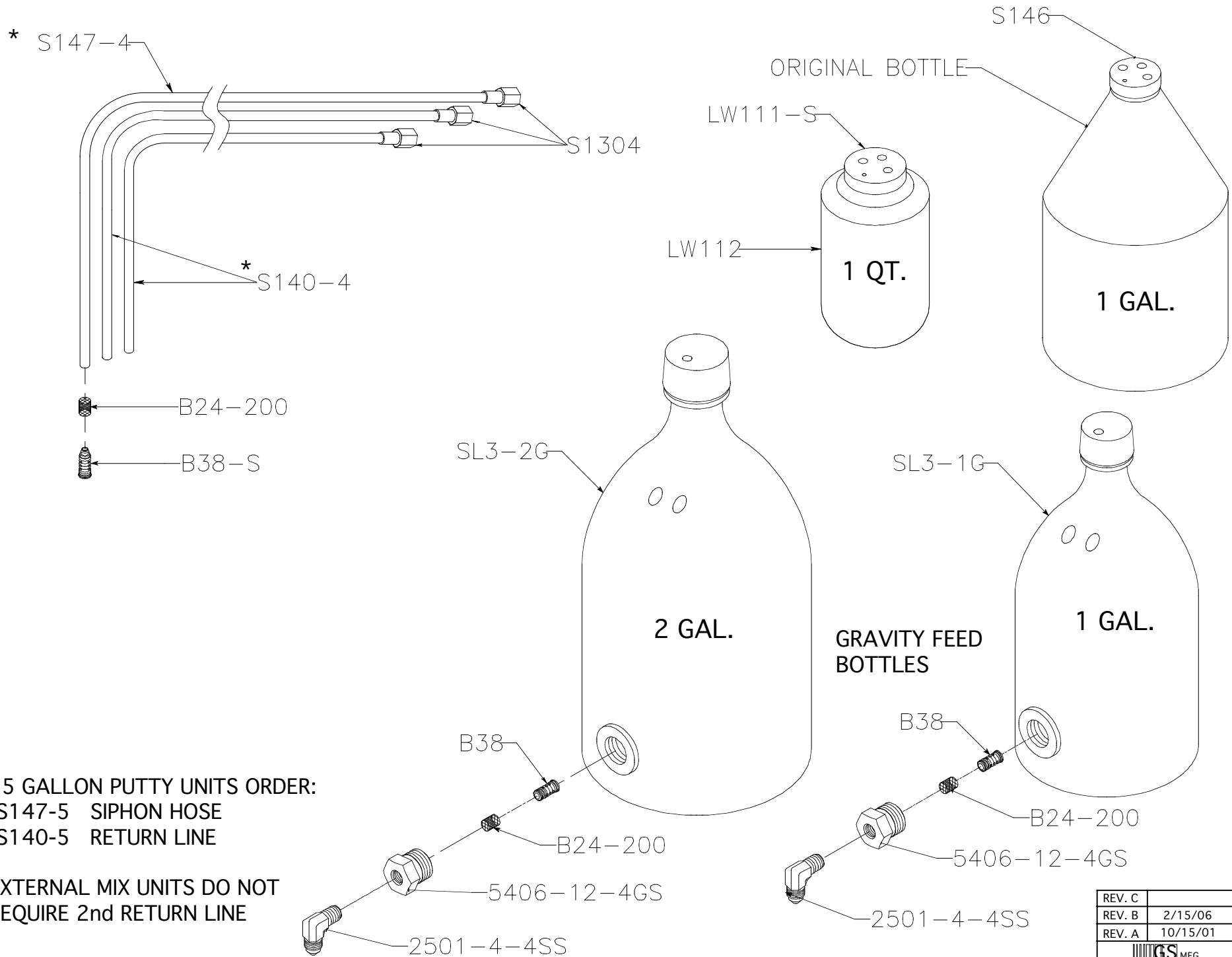
S133-04 RELIEF VALVE

* REBUILD KIT: S133-RK-04



REV. C	7/ 2 / 09
REV. B	10/8/ 08
REV. A	5/ 5 / 08
GS MFG	8 /3 /04

MEKP SIPHON HOSES / BOTTLES

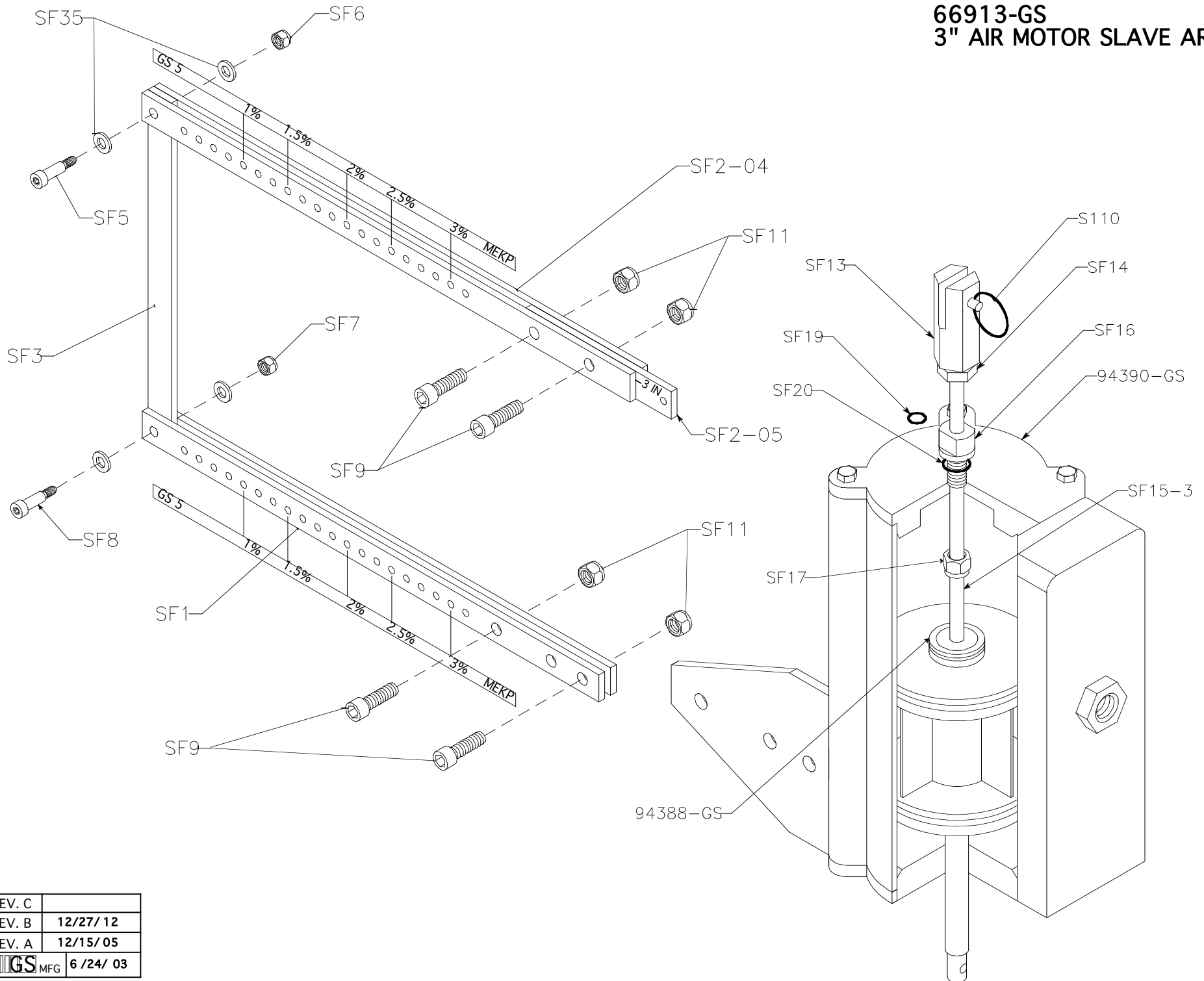



*. 55 GALLON PUTTY UNITS ORDER:
 -S147-5 SIPHON HOSE
 -S140-5 RETURN LINE

EXTERNAL MIX UNITS DO NOT
 REQUIRE 2nd RETURN LINE

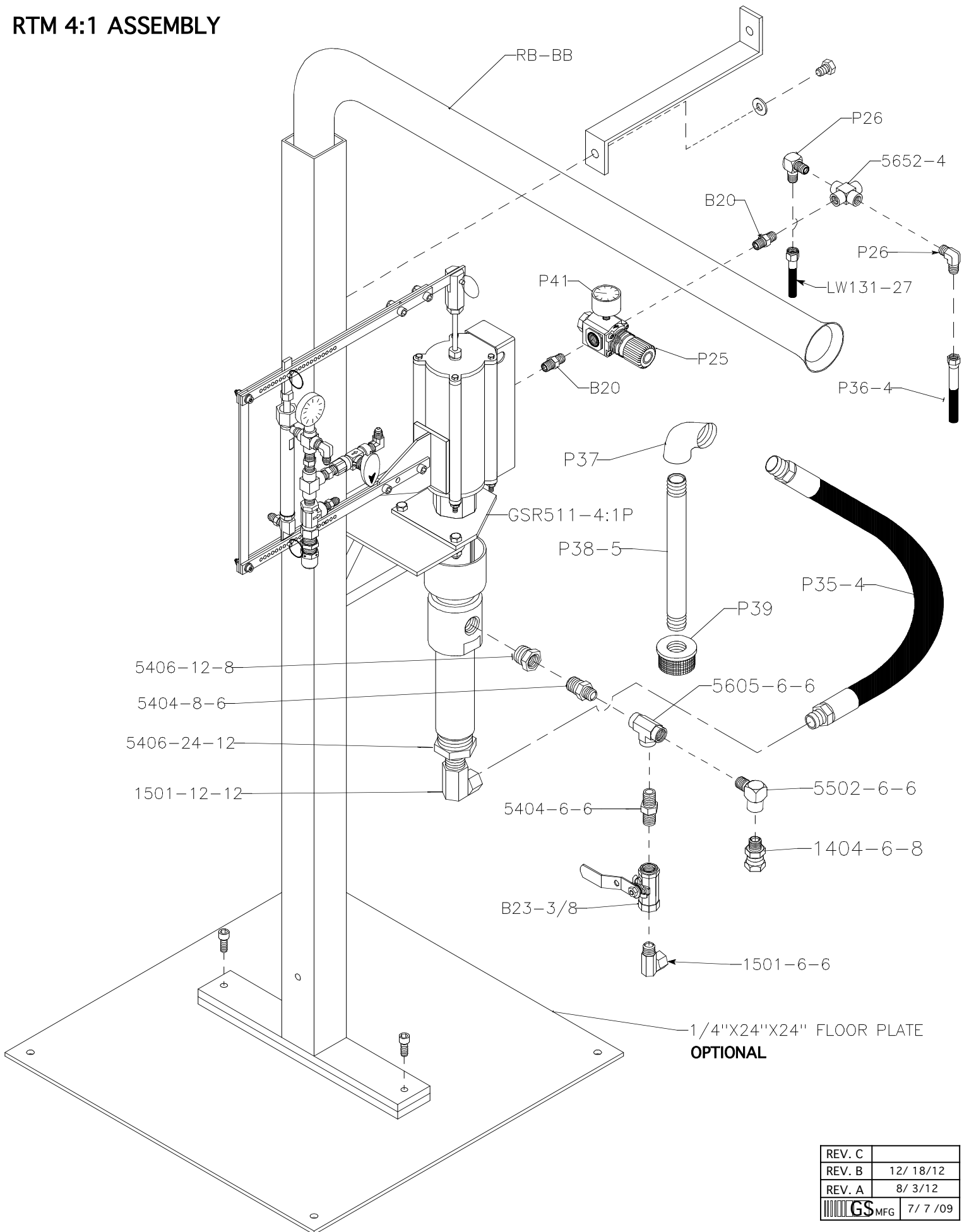
REV. C	
REV. B	2/15/06
REV. A	10/15/01


66913-GS 3" AIR MOTOR SLAVE ARM



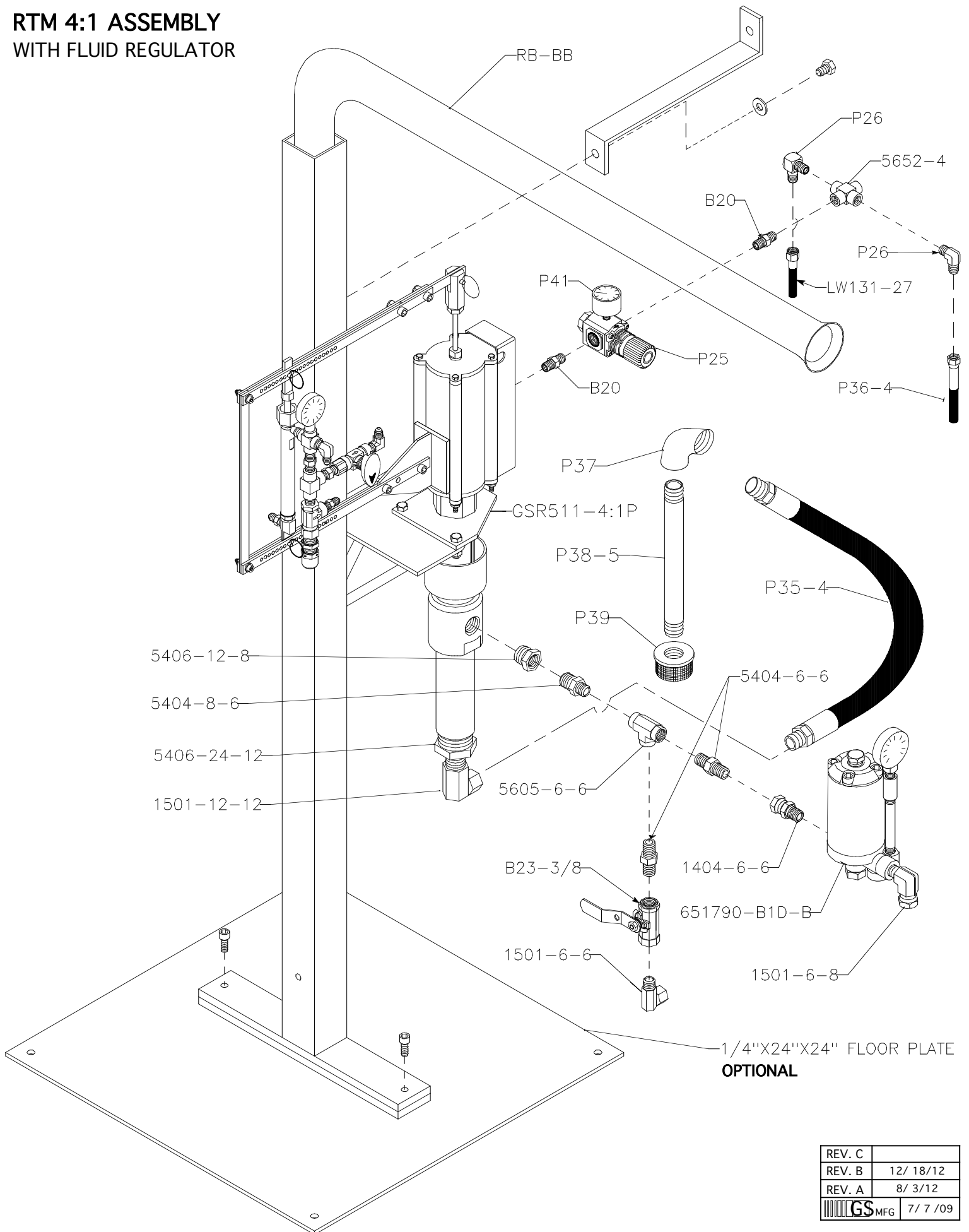
REV. C	
REV. B	12/27/12
REV. A	12/15/05
 MFG	6/24/03


RTM 4:1 ASSEMBLY



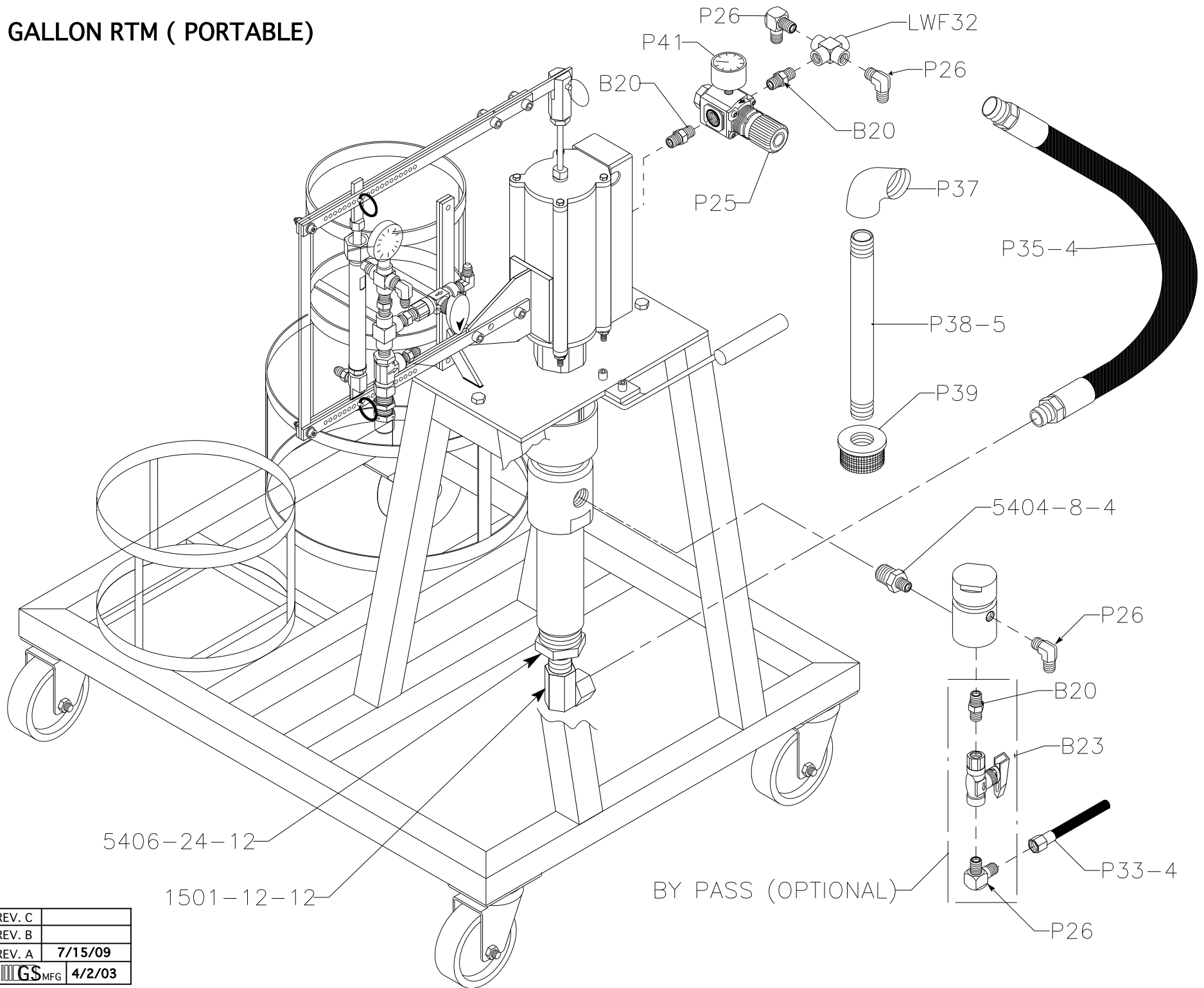
REV. C	
REV. B	12/ 18/12
REV. A	8/ 3/12
 GS MFG	7/ 7 /09


RTM 4:1 ASSEMBLY WITH FLUID REGULATOR



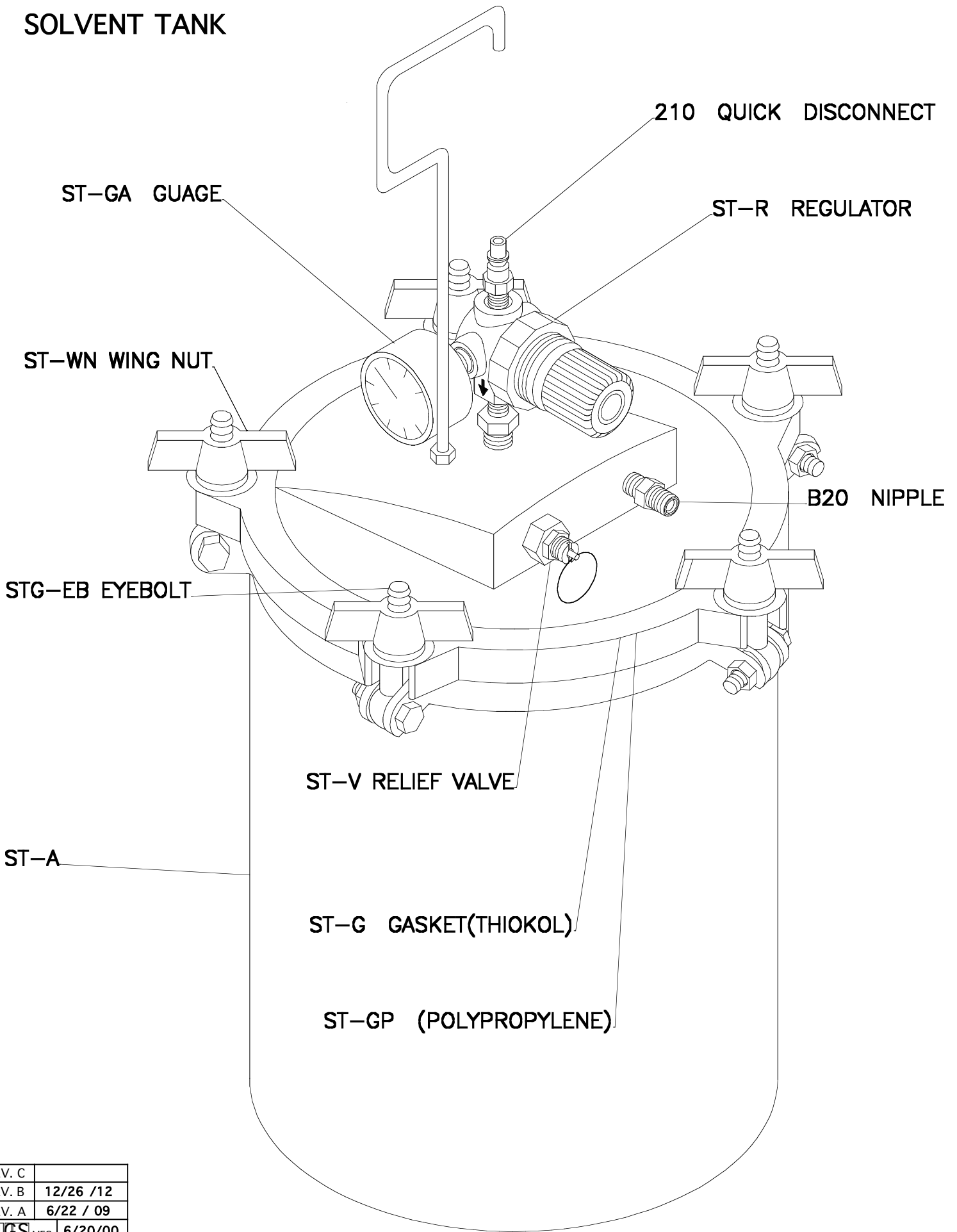
REV. C	
REV. B	12/ 18/12
REV. A	8/ 3/12
 GS MFG	7/ 7 /09


5 GALLON RTM (PORTABLE)



REV. C	
REV. B	
REV. A	7/15/09
 MFG	4/2/03

SOLVENT TANK



REV. C	
REV. B	12/26 /12
REV. A	6/22 / 09
 GS MFG	6/20/00