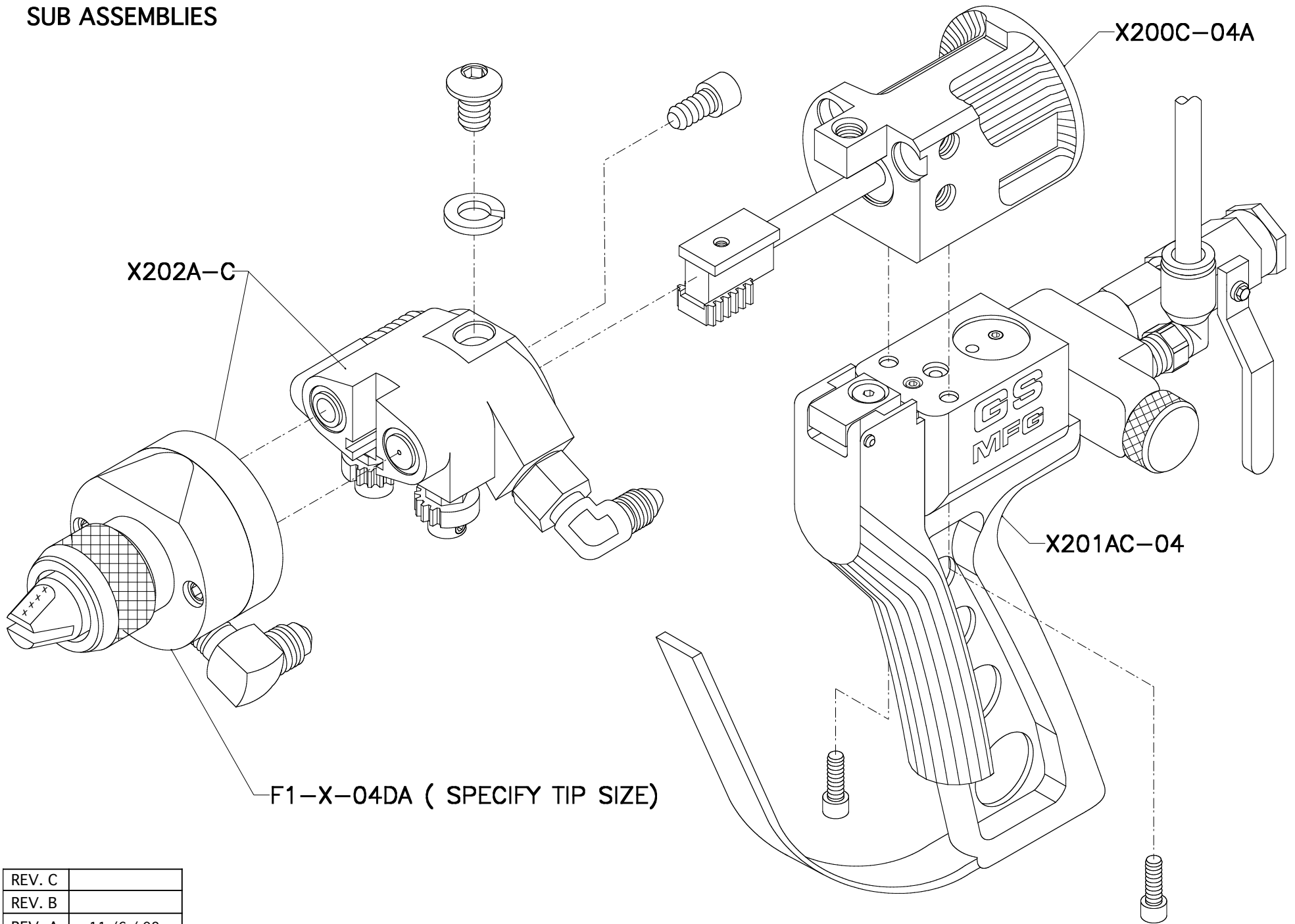



**X2004C-04 INT.MIX LITE CHOPPER GUN
SUB ASSEMBLIES**

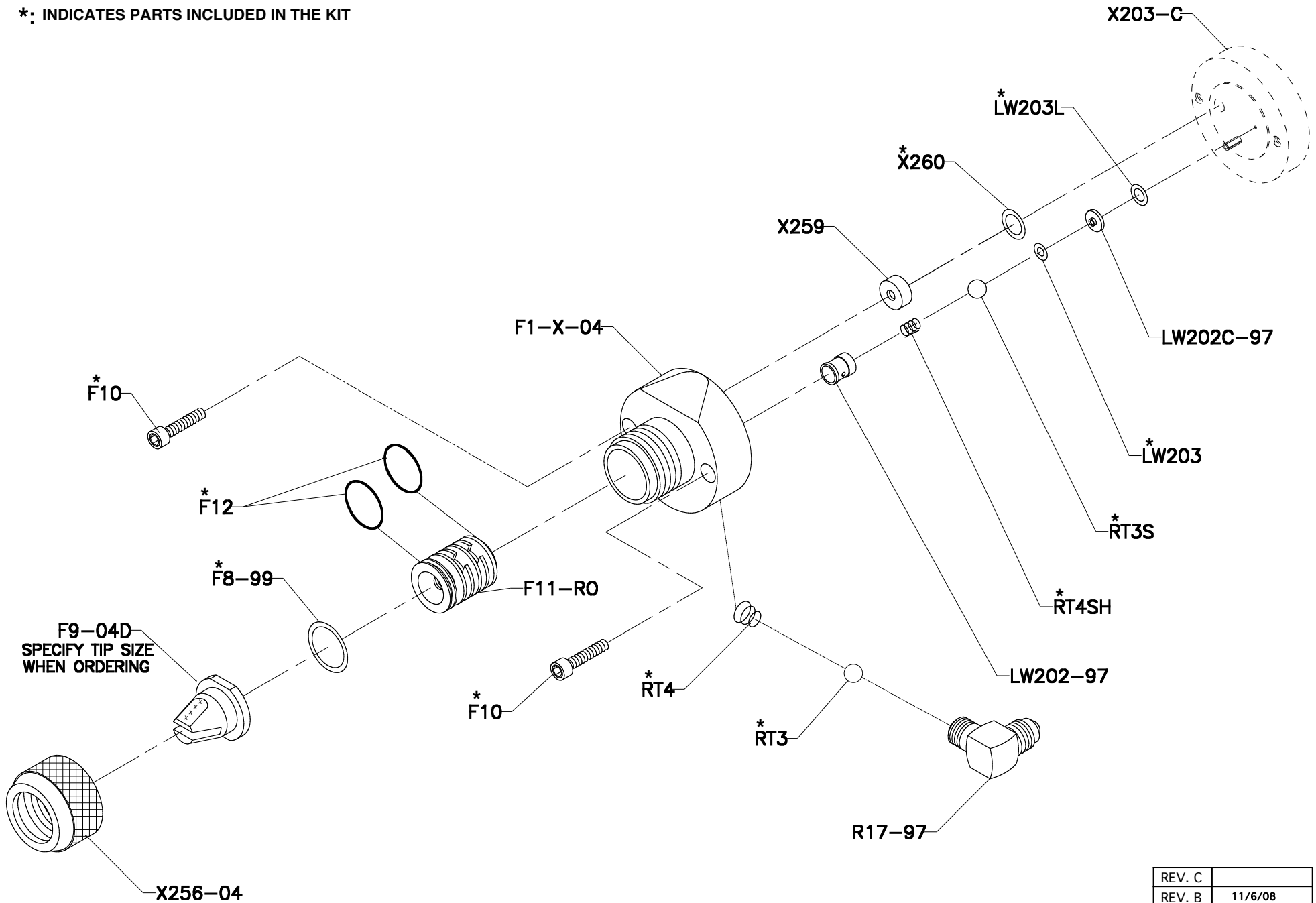


REV. C	
REV. B	
REV. A	11 / 6 / 08
 GS MFG	4 / 19 / 04

X-GUN F1-X-04DA TIP ASSEMBLY

REPAIR KIT : F1-X-04 RK

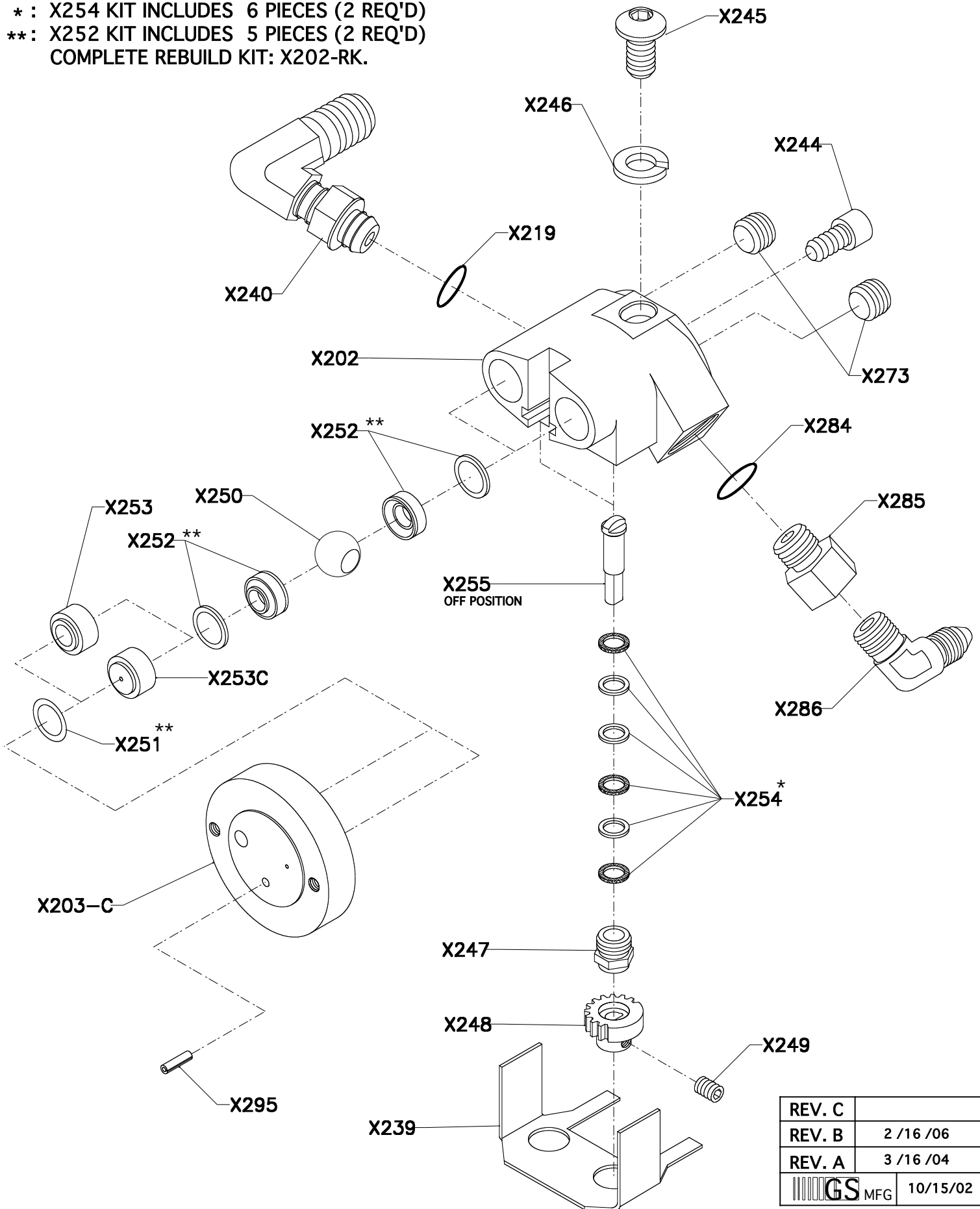
*: INDICATES PARTS INCLUDED IN THE KIT




REV. C	
REV. B	11/6/08
REV. A	7/2/07
GS MFG	3 /25/ 04

X202C-A FLUID SECTION ASSEMBLY

* : X254 KIT INCLUDES 6 PIECES (2 REQ'D)
 **: X252 KIT INCLUDES 5 PIECES (2 REQ'D)
 COMPLETE REBUILD KIT: X202-RK.

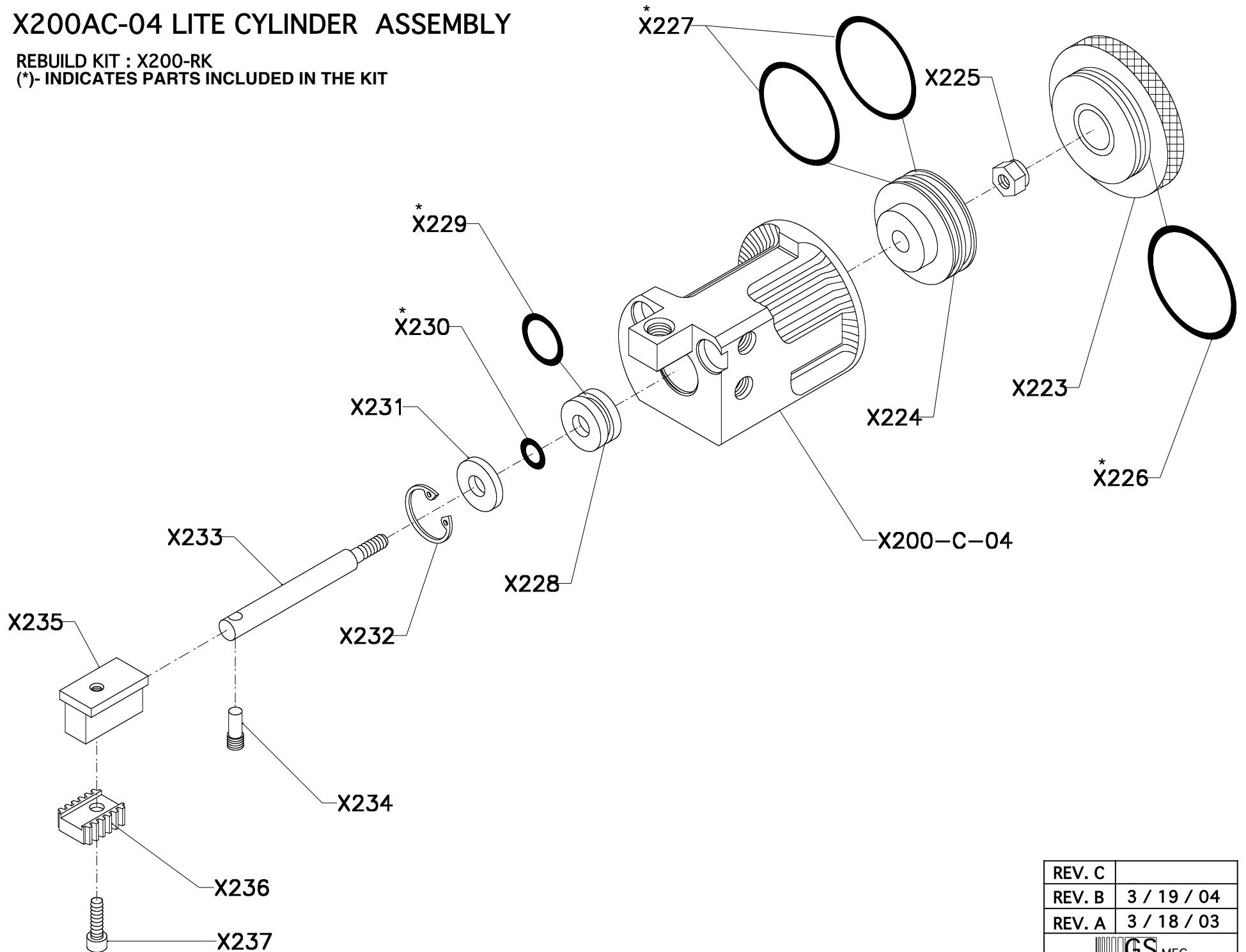



REV. C	
REV. B	2 /16 /06
REV. A	3 /16 /04
 MFG	10/15/02

X200AC-04 LITE CYLINDER ASSEMBLY

REBUILD KIT : X200-RK

(*)- INDICATES PARTS INCLUDED IN THE KIT

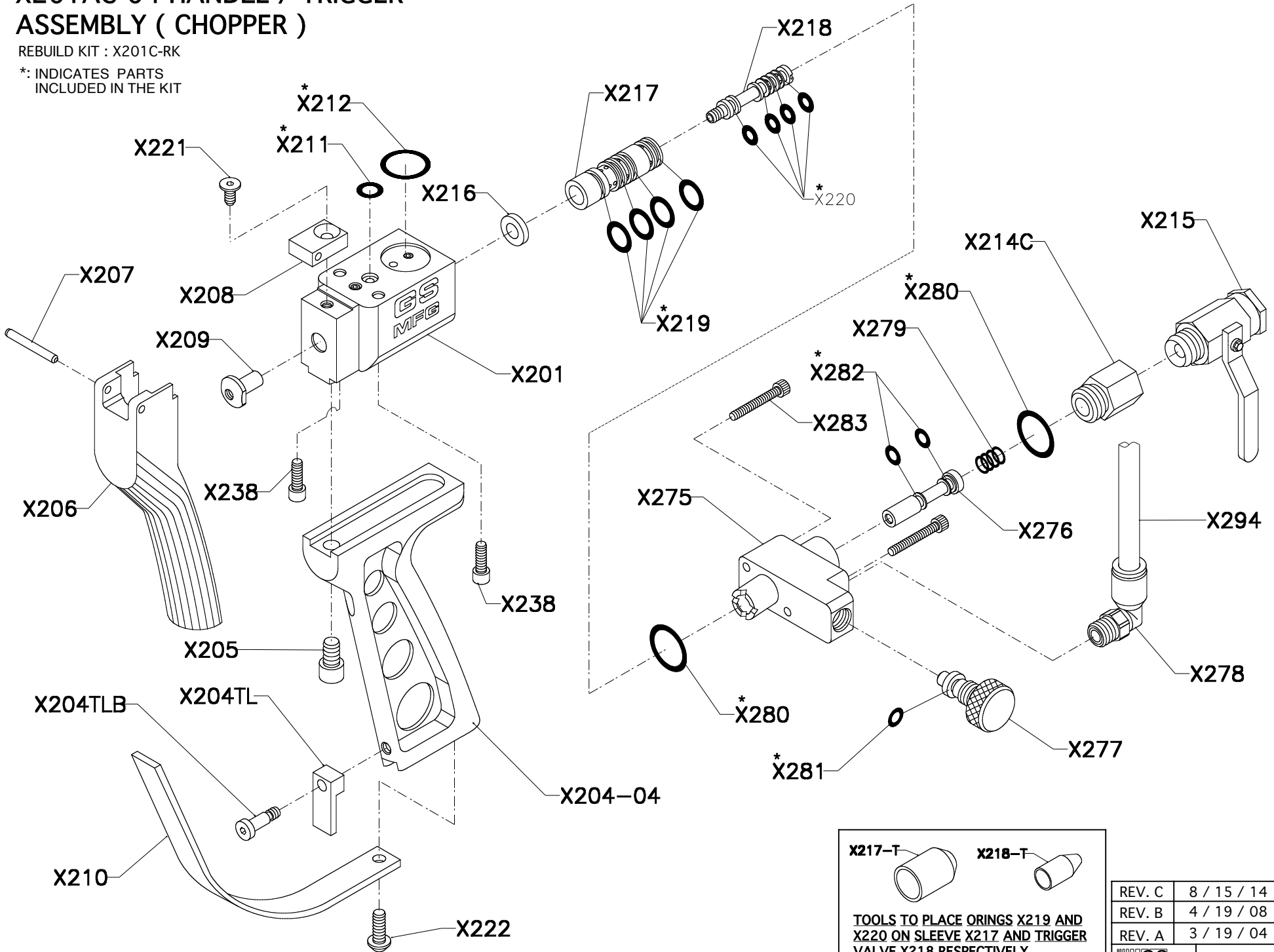


REV. C	
REV. B	3 / 19 / 04
REV. A	3 / 18 / 03
	

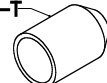
X201AC-04 HANDLE / TRIGGER ASSEMBLY (CHOPPER)

REBUILD KIT : X201C-RK

*: INDICATES PARTS INCLUDED IN THE KIT




X217-T



X218-T



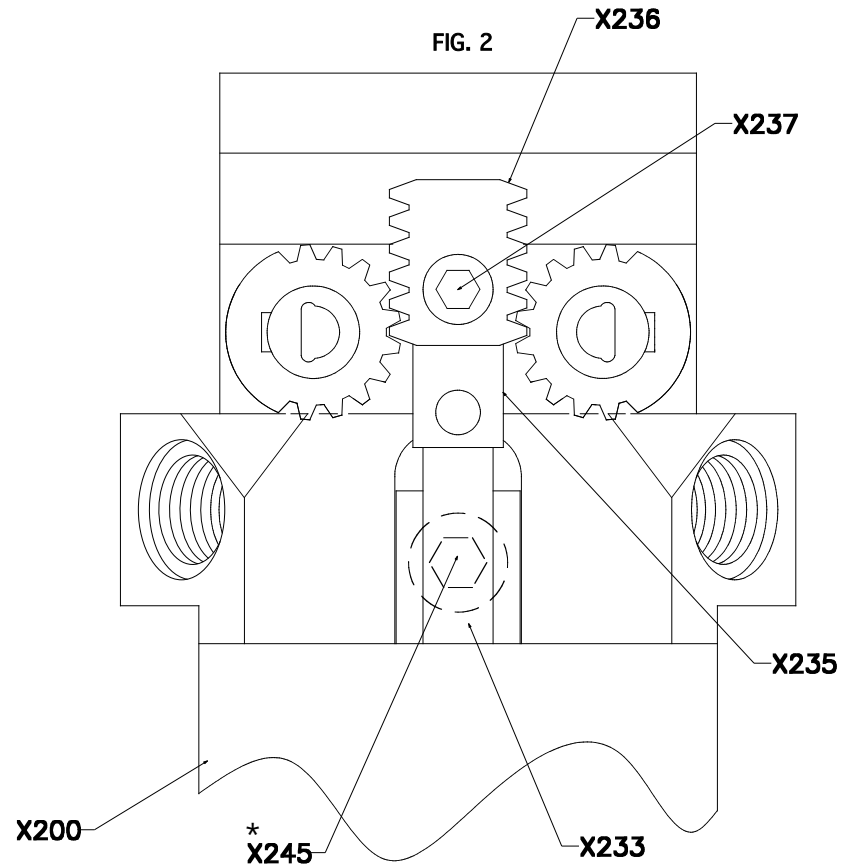
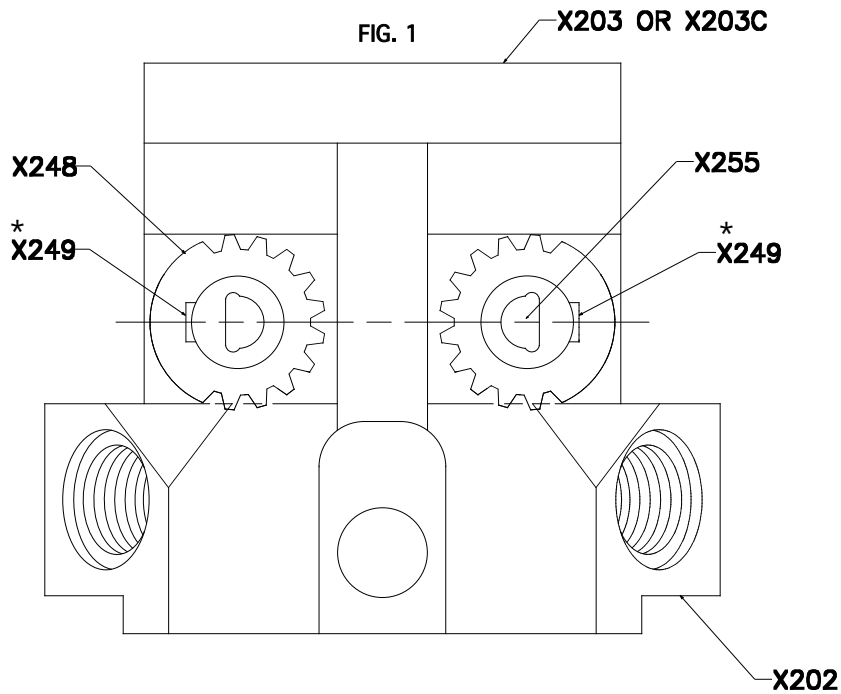
TOOLS TO PLACE ORINGS X219 AND X220 ON SLEEVE X217 AND TRIGGER VALVE X218 RESPECTIVELY

REV. C	8 / 15 / 14
REV. B	4 / 19 / 08
REV. A	3 / 19 / 04
 GS MFG	5/30 / 03


ALIGNMENT OF X202 FLUID SECTION ASSEMBLY TO X200 CYLINDER ASSEMBLY

1. BE SURE THAT X249(*) SET SCREW IS TIGHTENED TO THE FLAT ON X255 STEM AND FACING OUTWARDS.
2. IF THIS IS DONE CORRECTLY, THE BALLS WILL BE IN THE OFF POSITION. THE TIMING OF THE GEARS IS VERY IMPORTANT SO THAT THE X236 RACK WILL SLIDE INTO POSITION AS SHOWN IN FIG. 2.

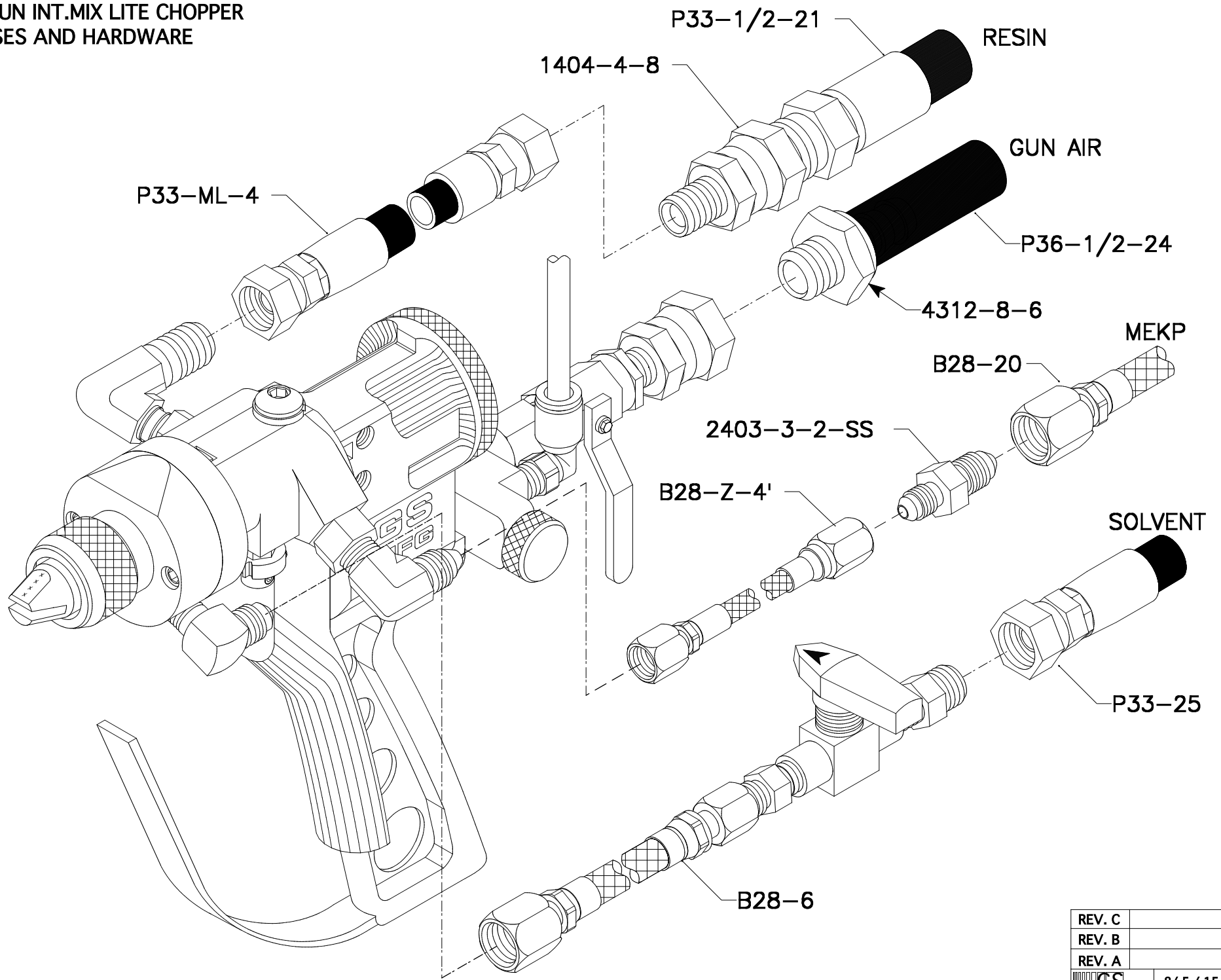
3. ATTACH X200 CYLINDER ASSY. TO X202 ASSY. LEAVING THE X245(*) BOLT LOOSE. MAKE SURE X233 SHAFT IS PUSHED ALL THE WAY FORWARD.
4. INSERT X236 RACK ONTO X235 T-NUT ALIGNED WITH X248 GEARS AS SHOWN IN FIG. 2.
5. AFTER X236 RACK IS SEATED ONTO X235 T-NUT TIGHTEN X237(*) AND X245(*) BOLTS.




**NOTE; * :USE BLUE LOCTITE 242
ON THE THREADS**

REV. C	
REV. B	7 / 30 / 15
REV. A	2 / 16 / 06
 MFG	12/21/04

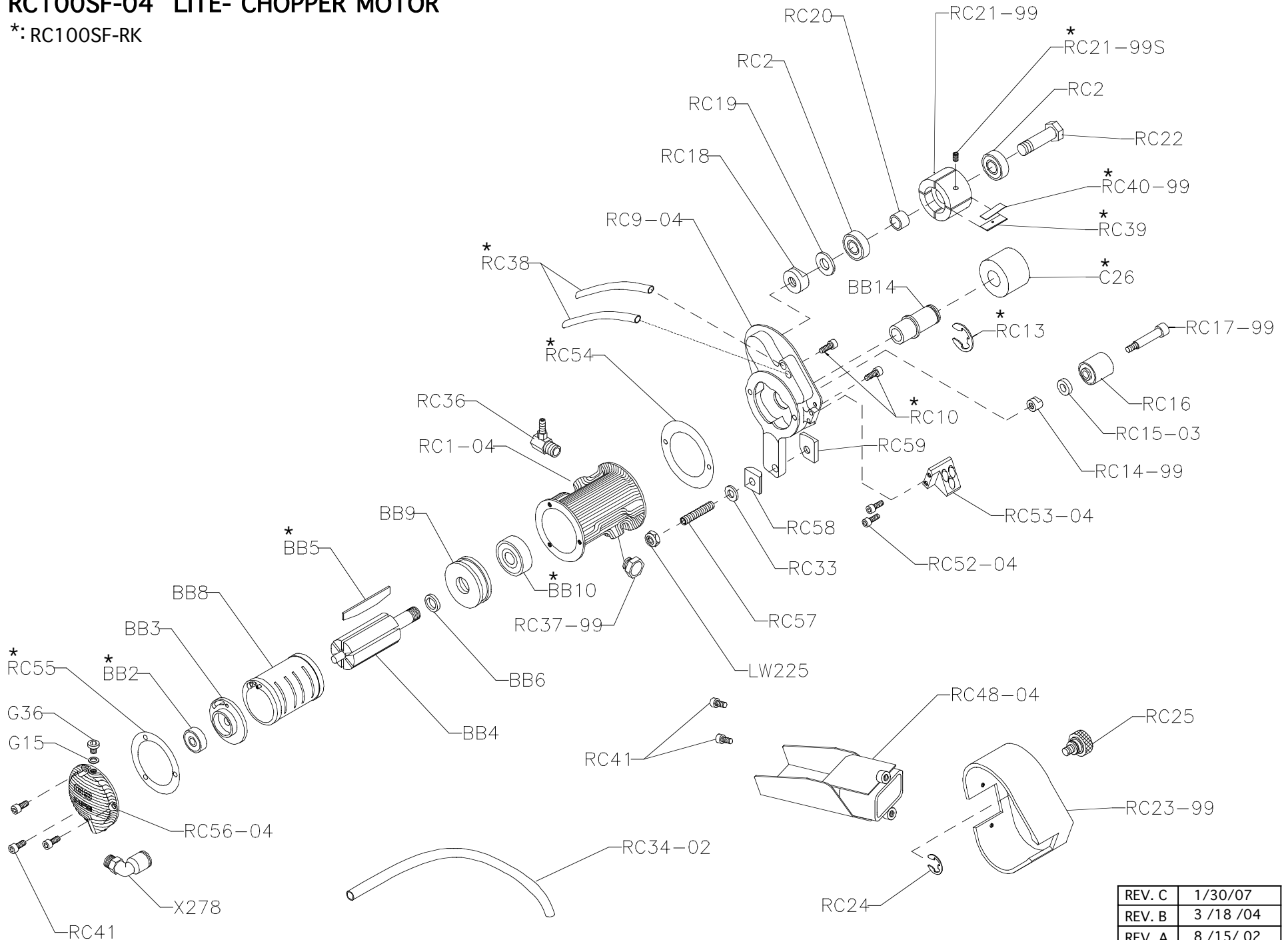
**X-GUN INT.MIX LITE CHOPPER
HOSES AND HARDWARE**




REV. C	
REV. B	
REV. A	
 MFG	8 / 5 / 15

RC100SF-04 LITE- CHOPPER MOTOR

*: RC100SF-RK



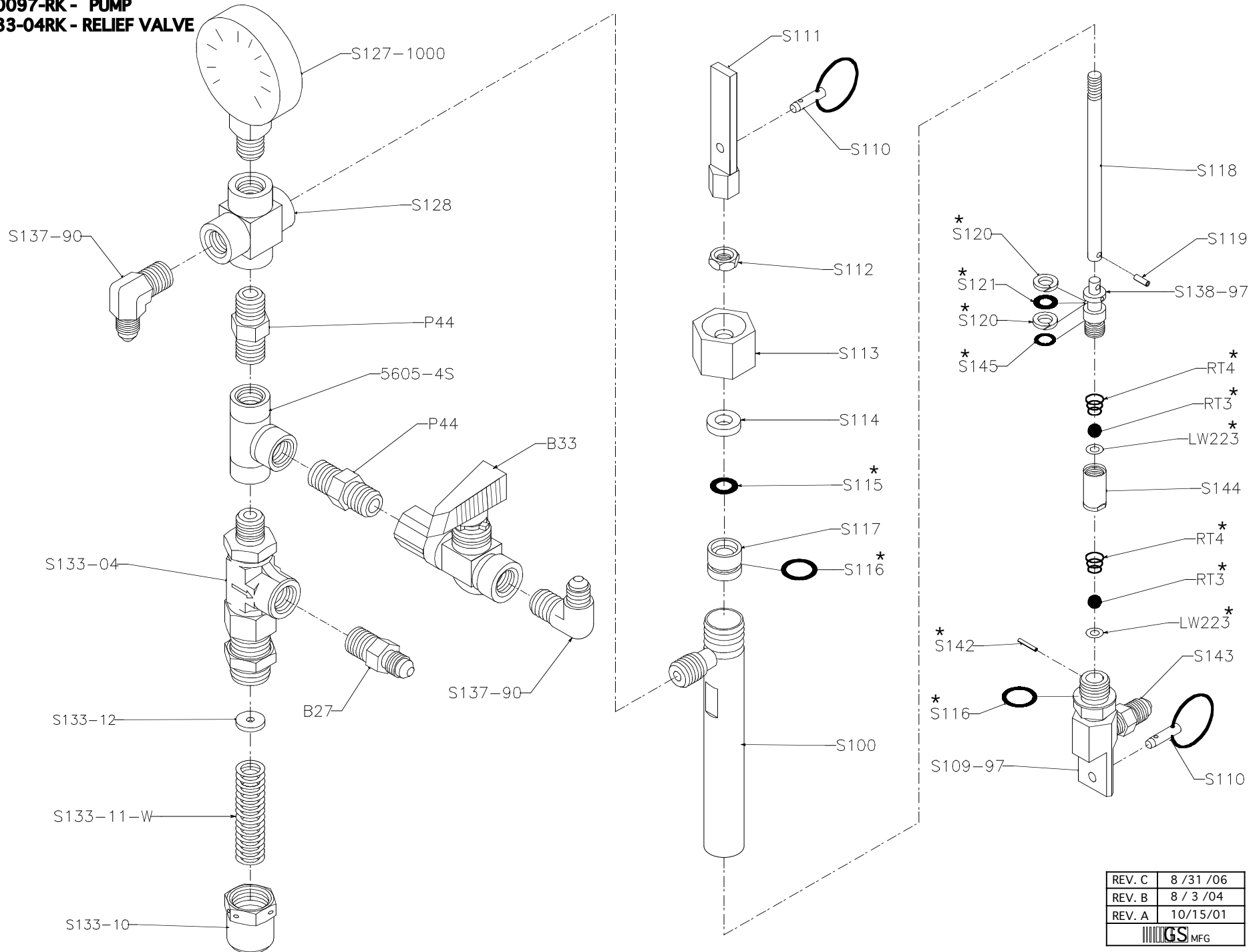
REV. C	1/30/07
REV. B	3/18/04
REV. A	8/15/02
	

S1000-1000-04

REBUILD KITS:

* S10097-RK - PUMP

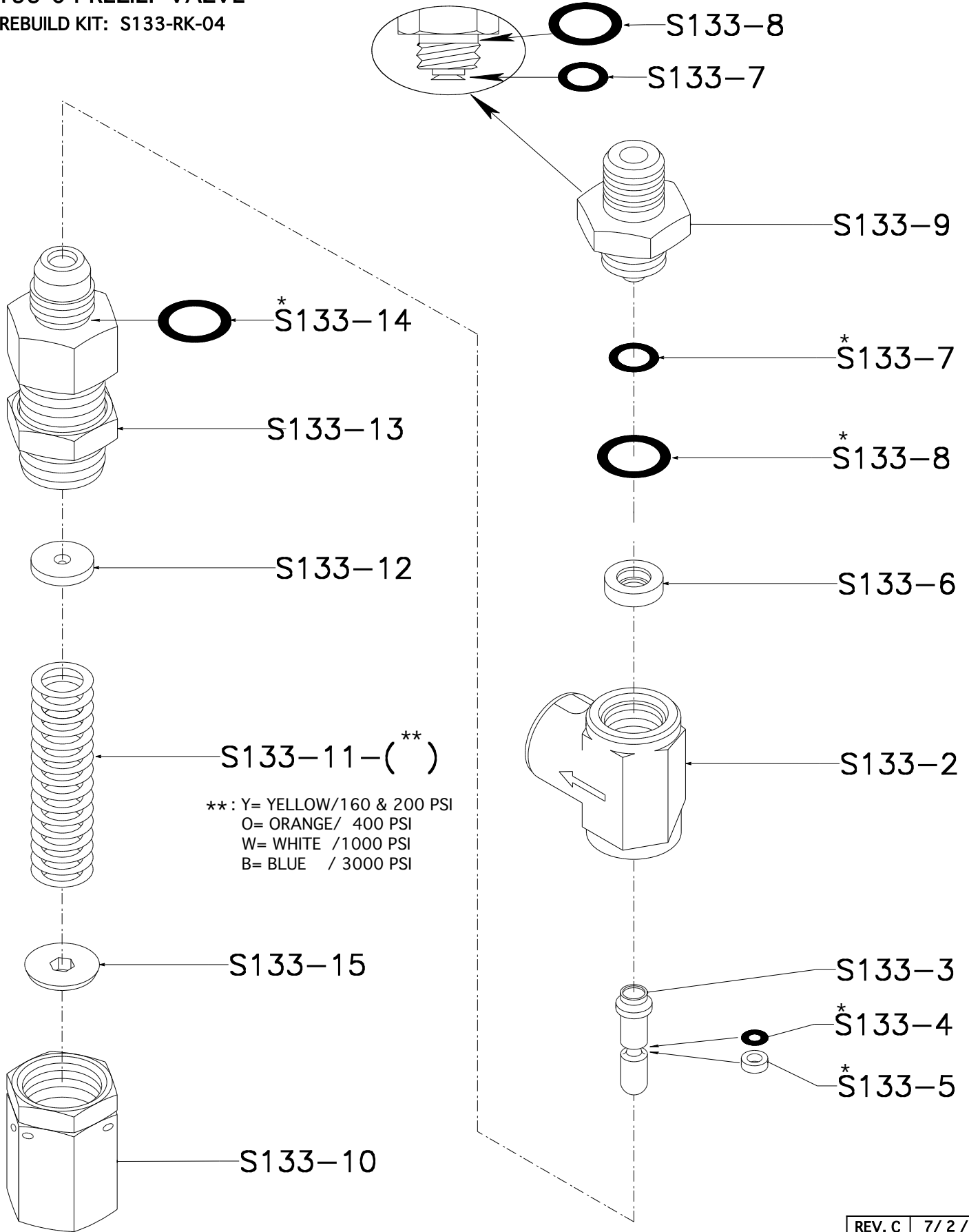
S133-04RK - RELIEF VALVE



REV. C	8 / 31 / 06
REV. B	8 / 3 / 04
REV. A	10 / 15 / 01

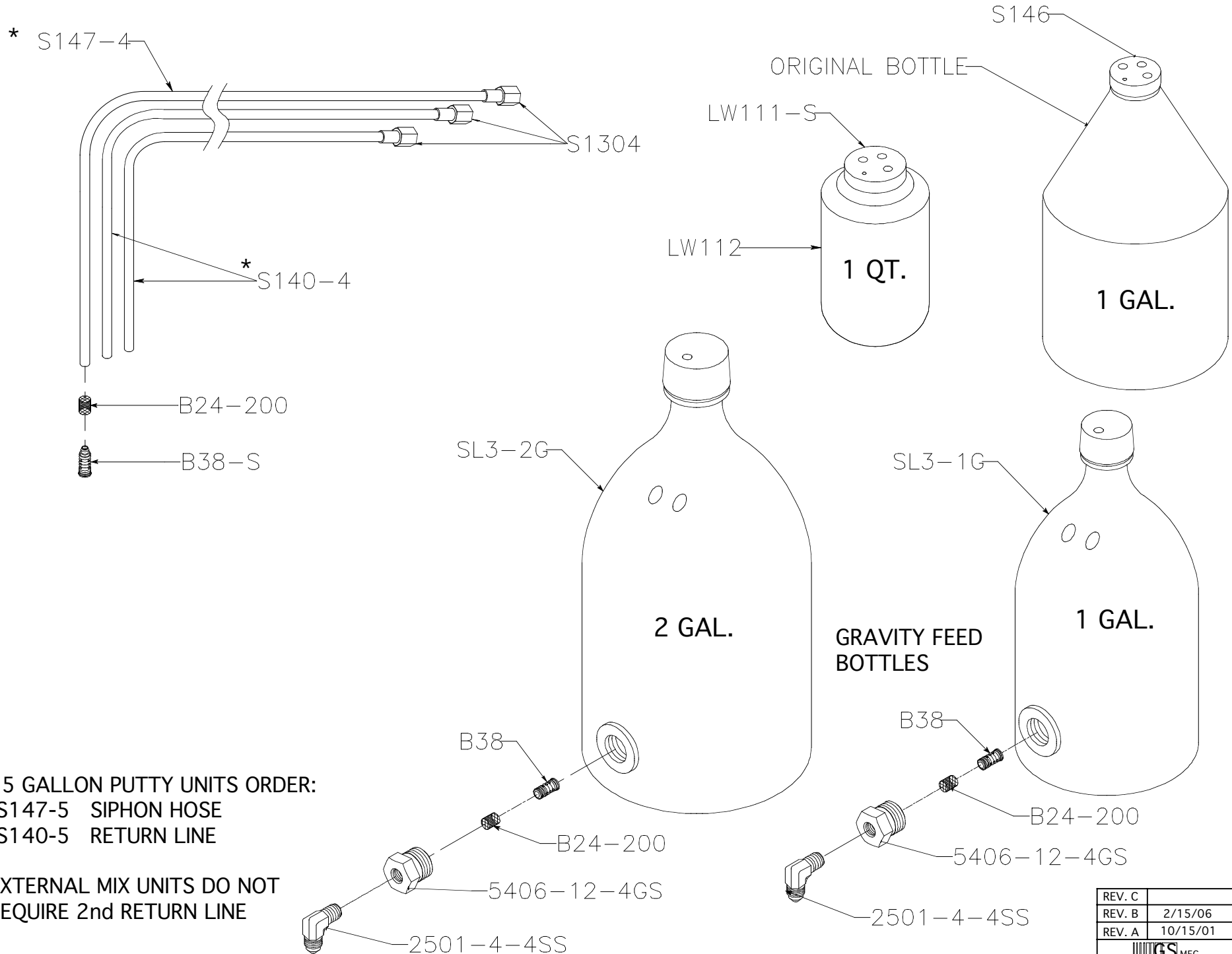
S133-04 RELIEF VALVE

* REBUILD KIT: S133-RK-04



REV. C	7/ 2 / 09
REV. B	10/8/ 08
REV. A	5/ 5 / 08
GS MFG	8 / 3 / 04

MEKP SIPHON HOSES / BOTTLES

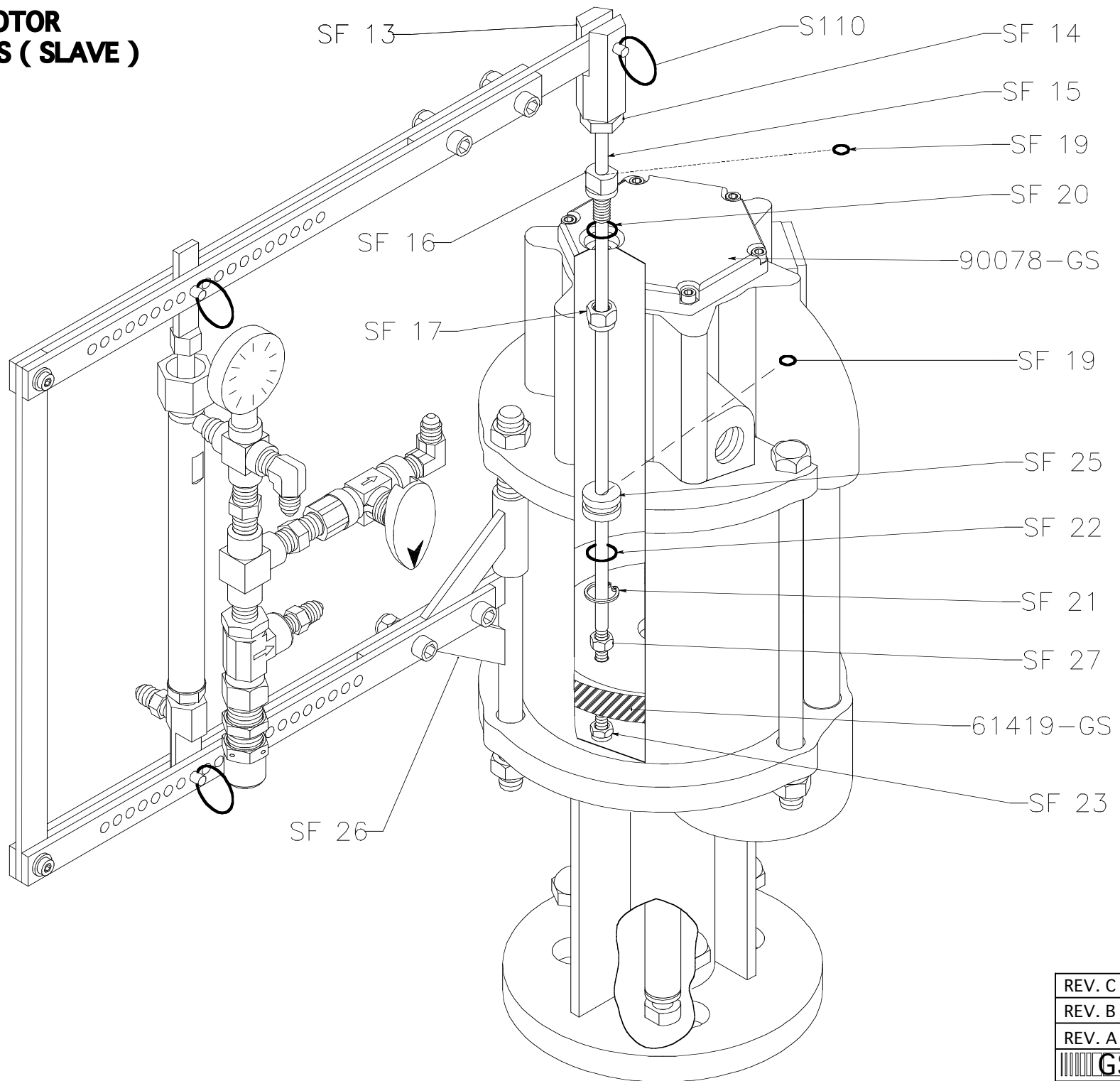



*. 55 GALLON PUTTY UNITS ORDER:
 -S147-5 SIPHON HOSE
 -S140-5 RETURN LINE

EXTERNAL MIX UNITS DO NOT
 REQUIRE 2nd RETURN LINE

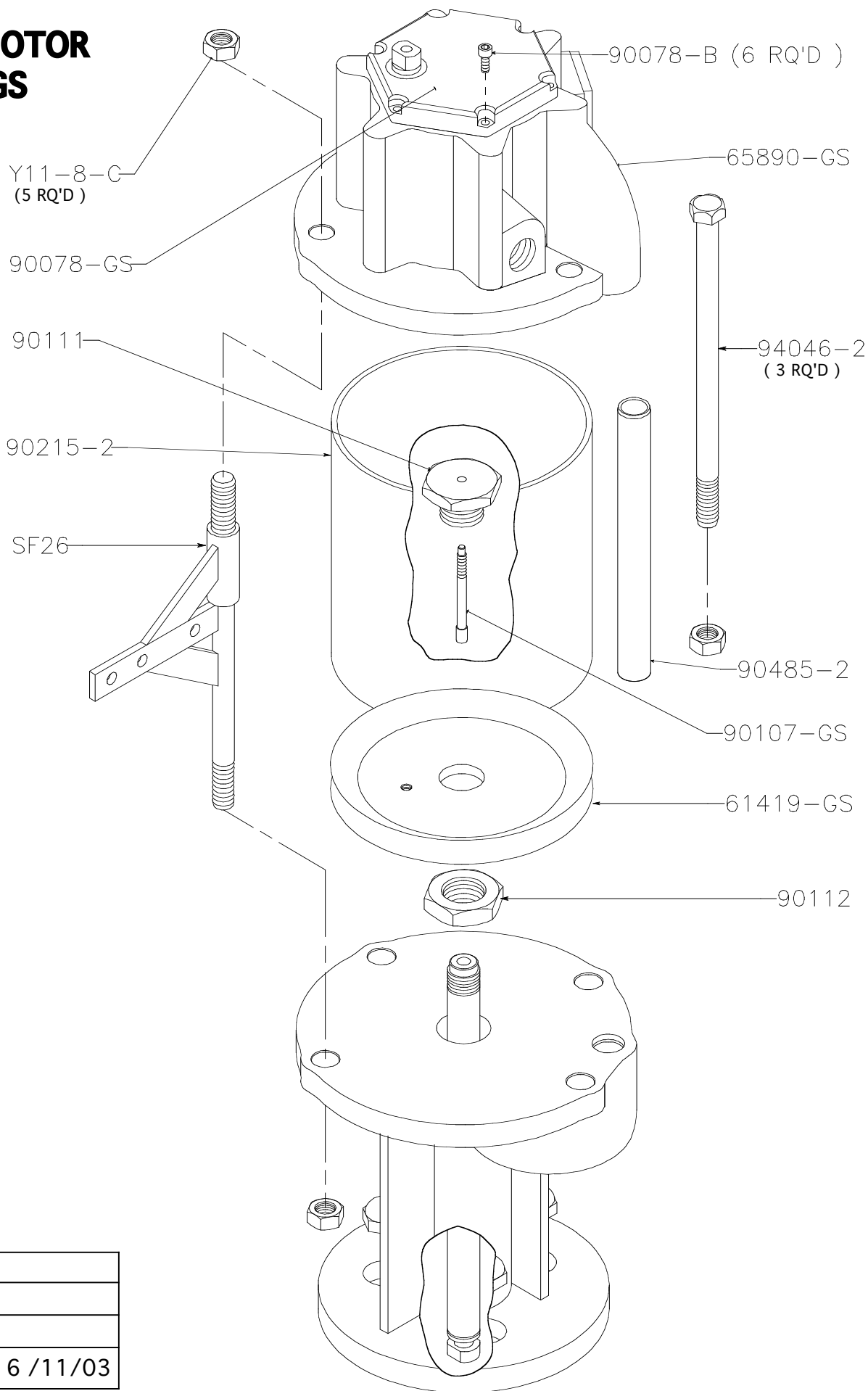
REV. C	
REV. B	2/15/06
REV. A	10/15/01


**6" AIR MOTOR
65665-GS (SLAVE)**



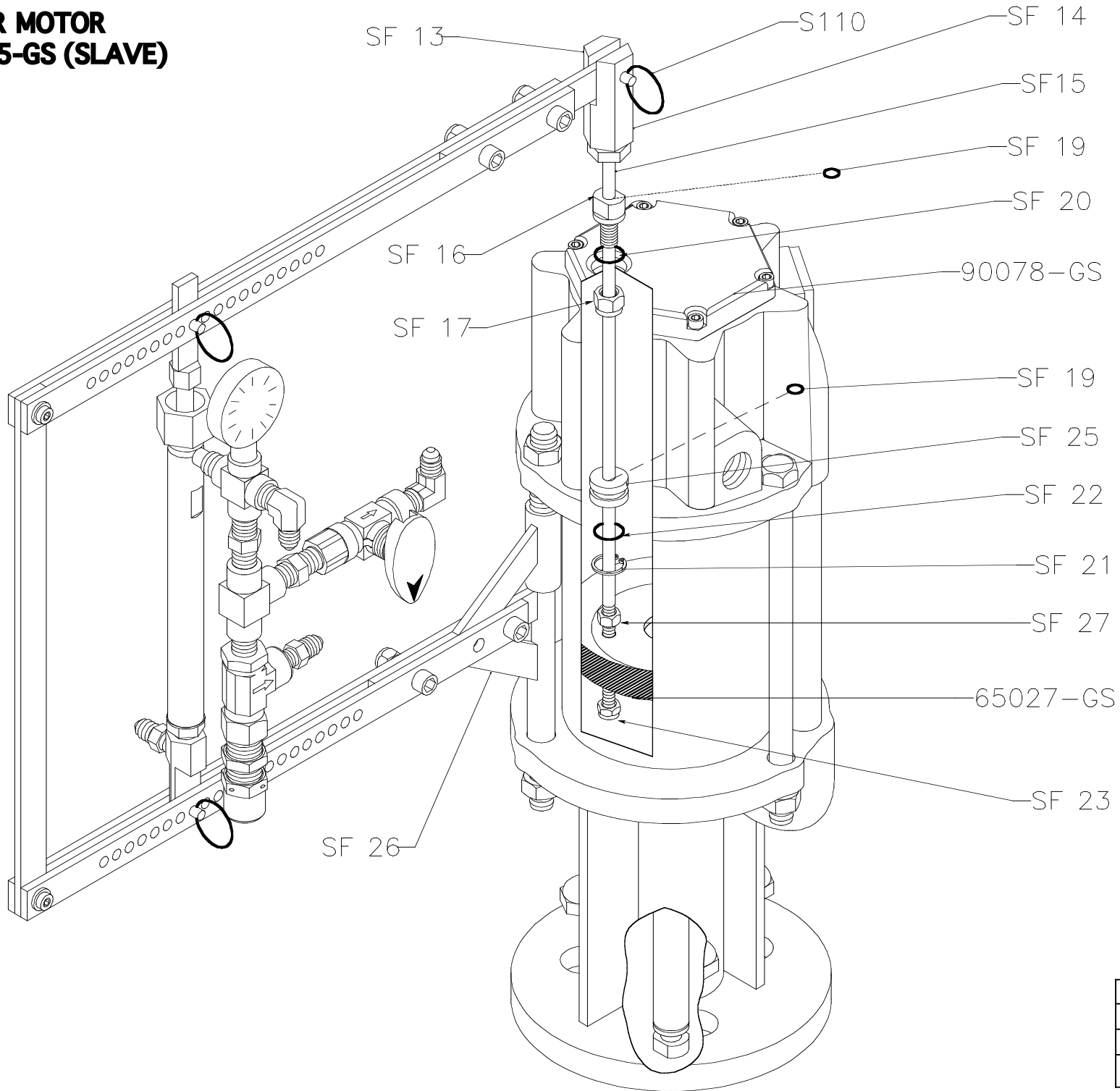
REV. C	
REV. B	7 /16 /09
REV. A	12 /13/05
 GS MFG	6 /24/03


6" AIR MOTOR 65665-GS



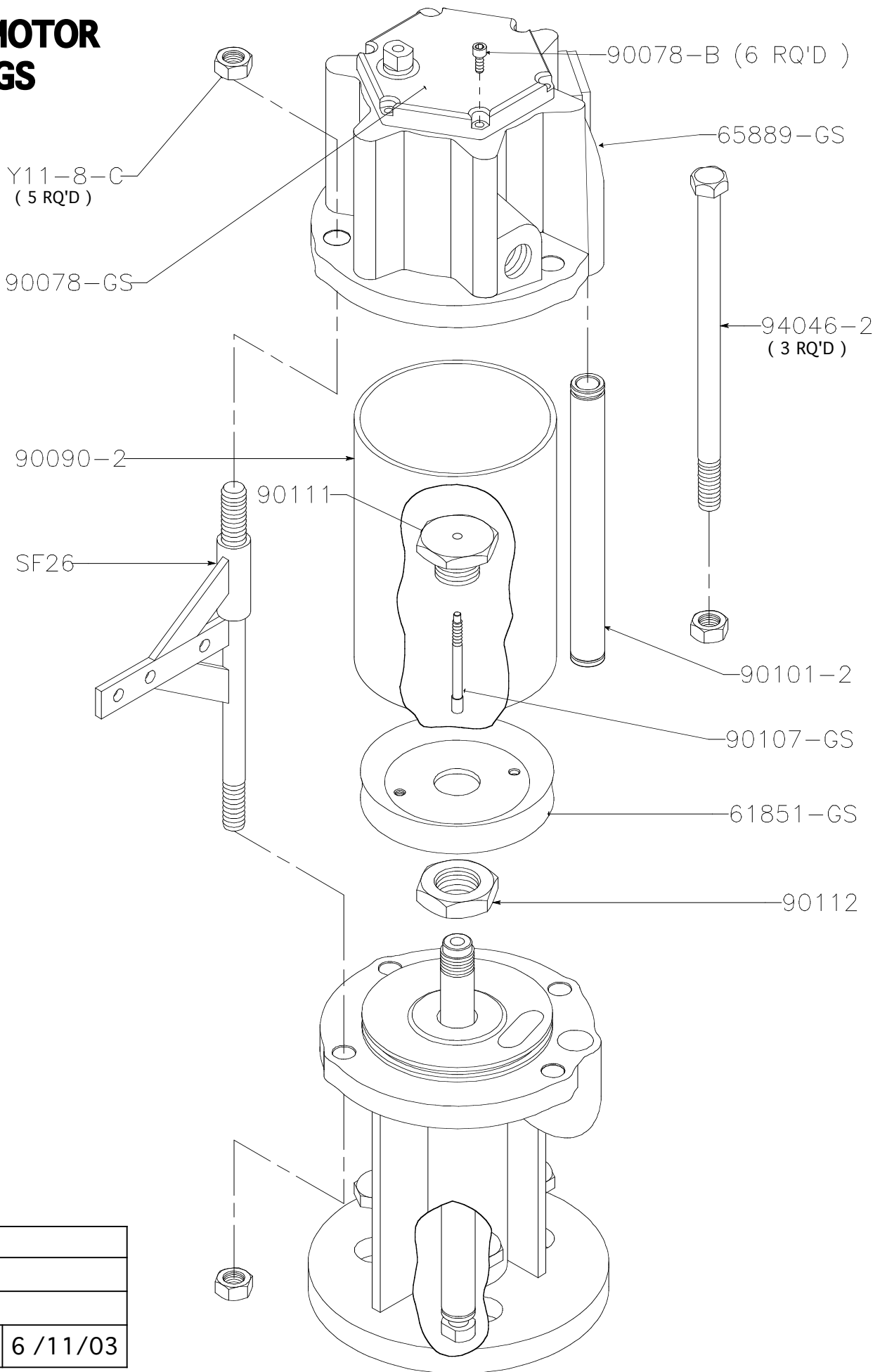
REV. C	
REV. B	
REV. A	
 MFG	6 / 11 / 03


**4" AIR MOTOR
65465-GS (SLAVE)**



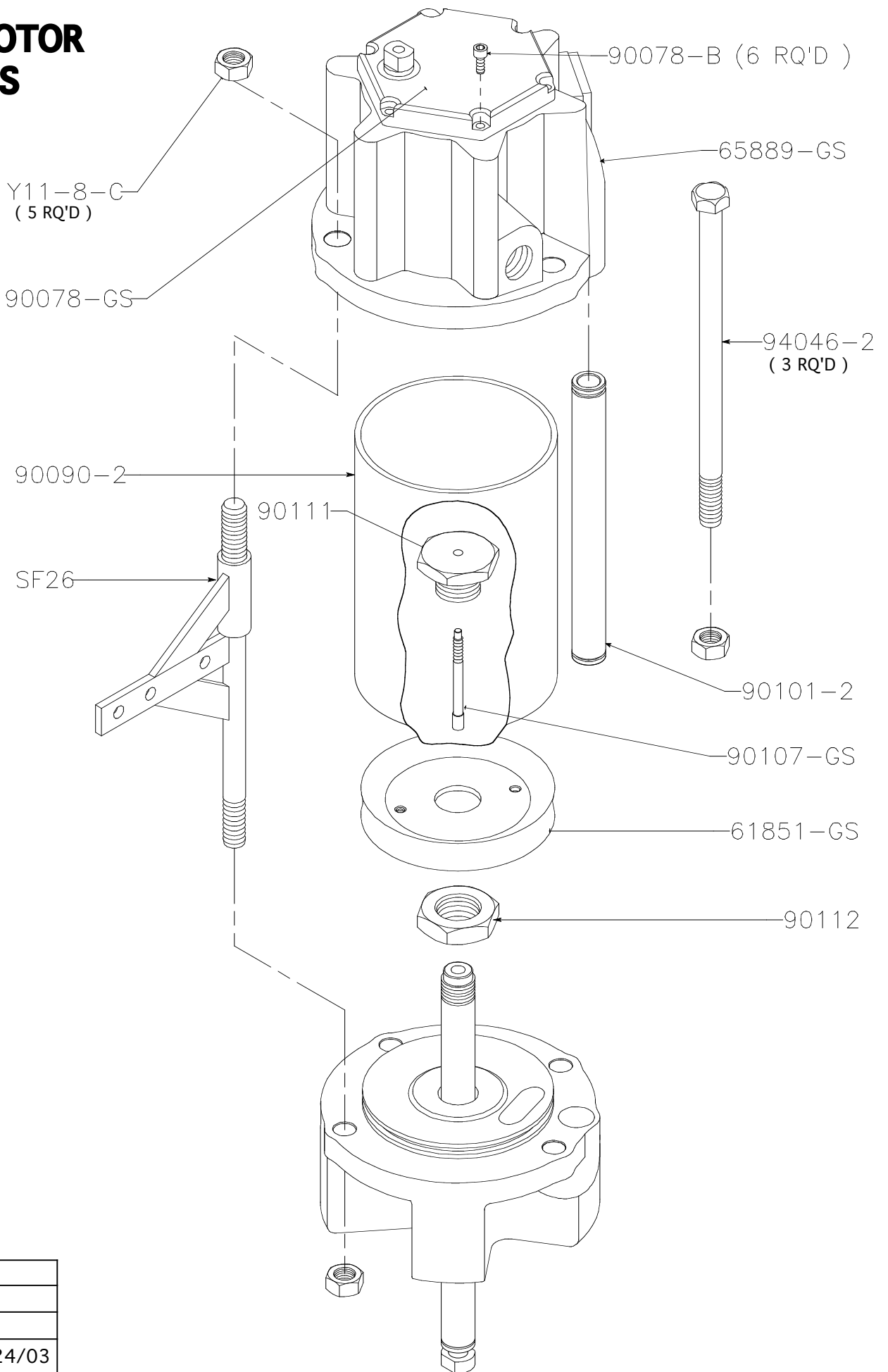
REV. C	
REV. B	8 / 3 / 09
REV. A	6 / 24 / 03
 GS MFG	10/15/01


4" AIR MOTOR 65465-GS



REV. C	
REV. B	
REV. A	
 MFG	6 / 11 / 03

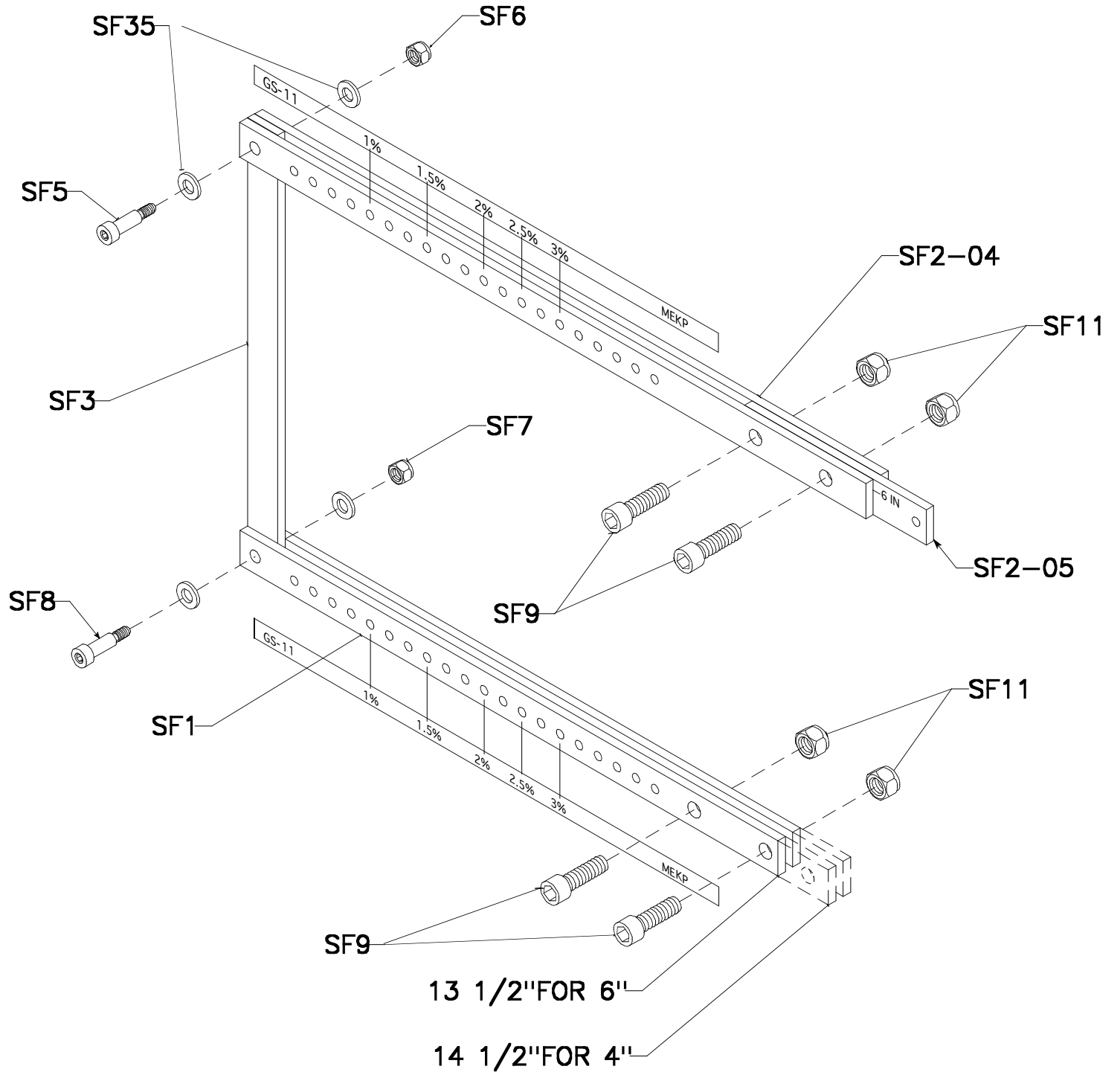
4" AIR MOTOR 65445-GS



REV. C	
REV. B	
REV. A	
 MFG	6 /24/03

S200-SLAVE ARM ASSEMBLY

11:1 / 4" AIR MOTOR
 22:1 / 6" AIR MOTOR



REV. C	11/26/12
REV. B	3 /9/06
REV. A	5 /20/03

RESIN / GELCOAT

11:1

22:1

65465-GS

65665-GS

Y85-29-C

90102

90109

90096

90102

90163-4

90531-GS

90102


90109

90109

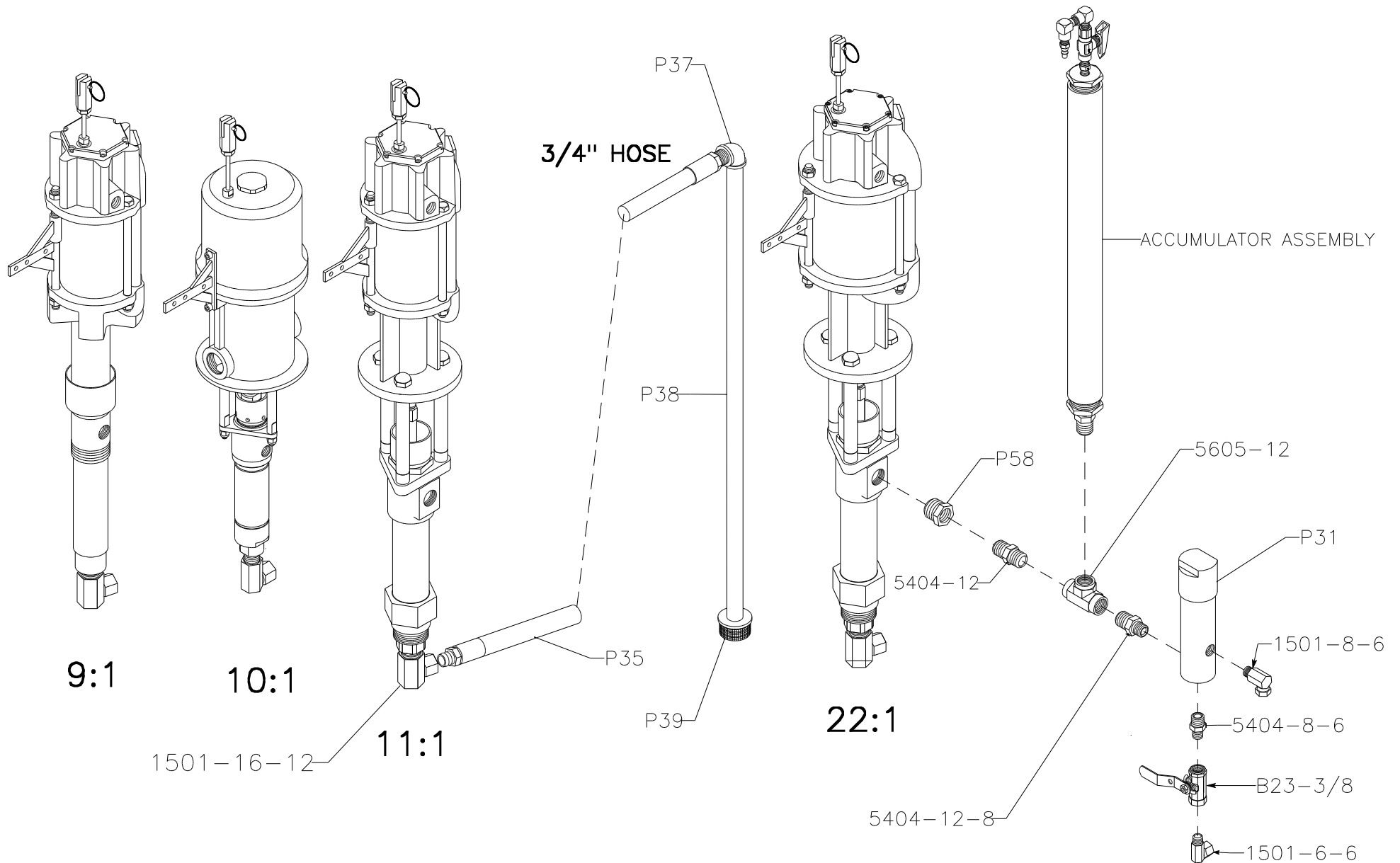
90096


90096

66300R43

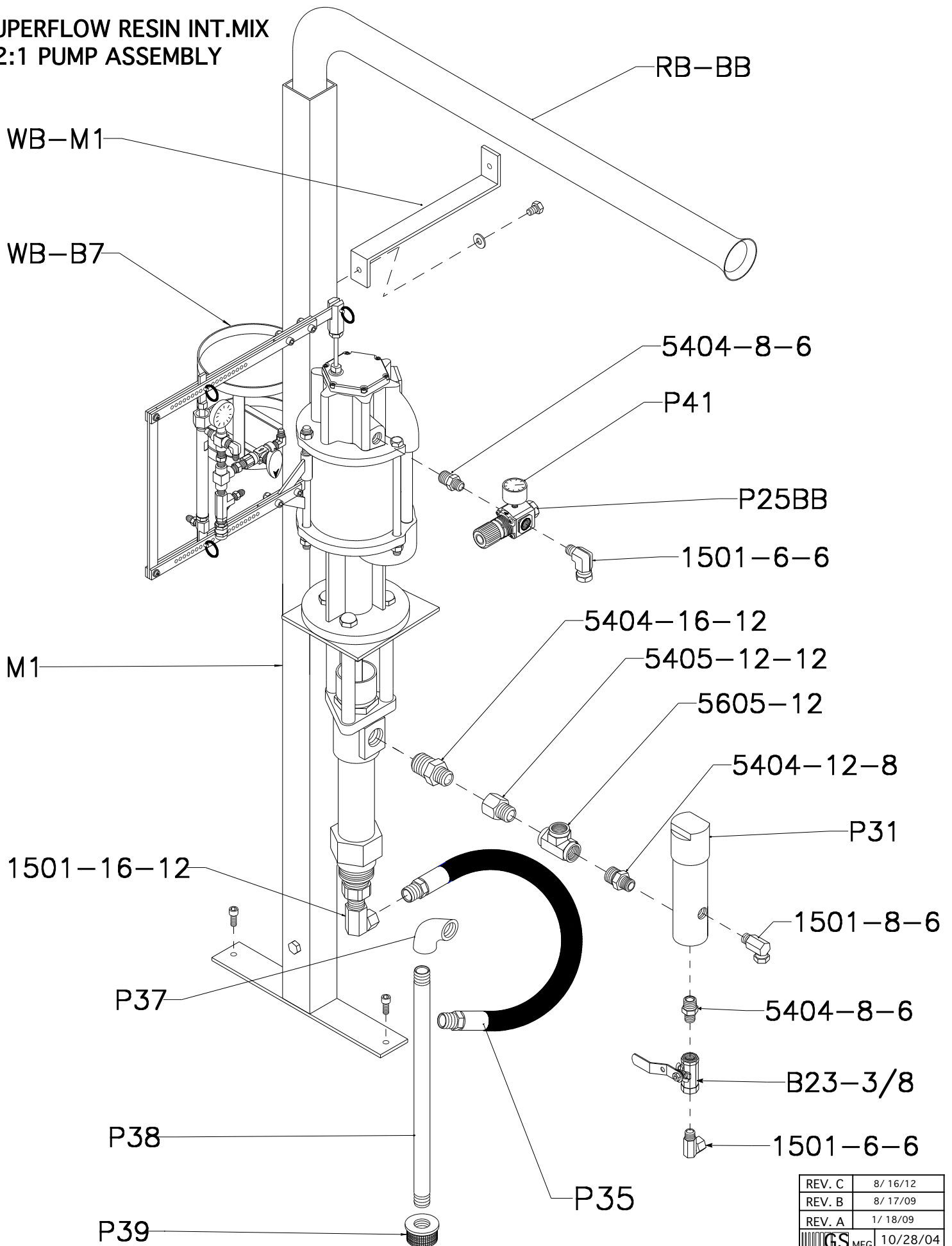
REV. C	
REV. B	
REV. A	8 / 4 / 09
 GS MFG	11 / 14 / 97


SUPER FLOW RESIN PUMP ASSEMBLIES (INTERNAL MIX)



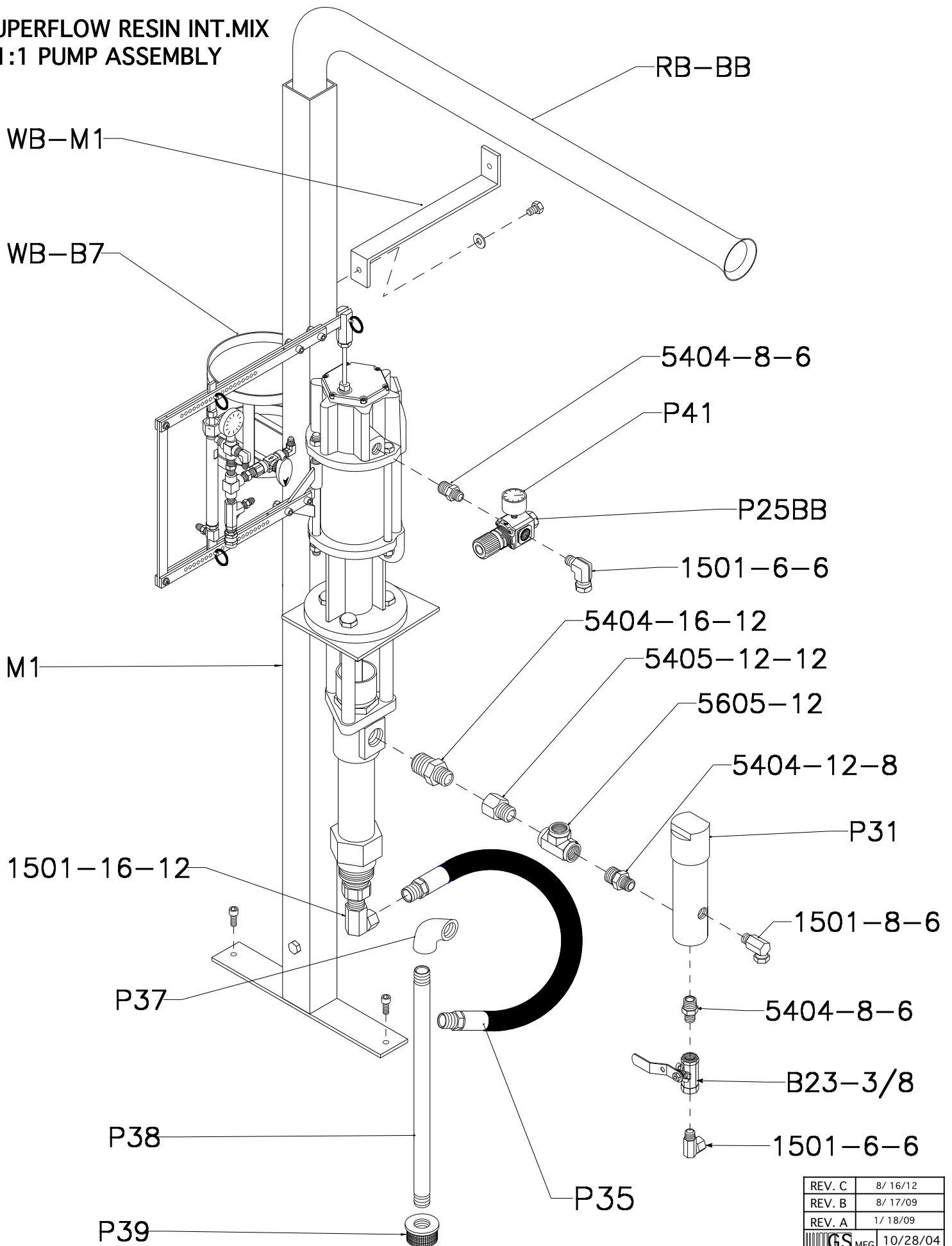
REV. C	8/1 /14
REV. B	10/27/09
REV. A	2/9 /07
 MFG	6/24/03


**SUPERFLOW RESIN INT.MIX
22:1 PUMP ASSEMBLY**



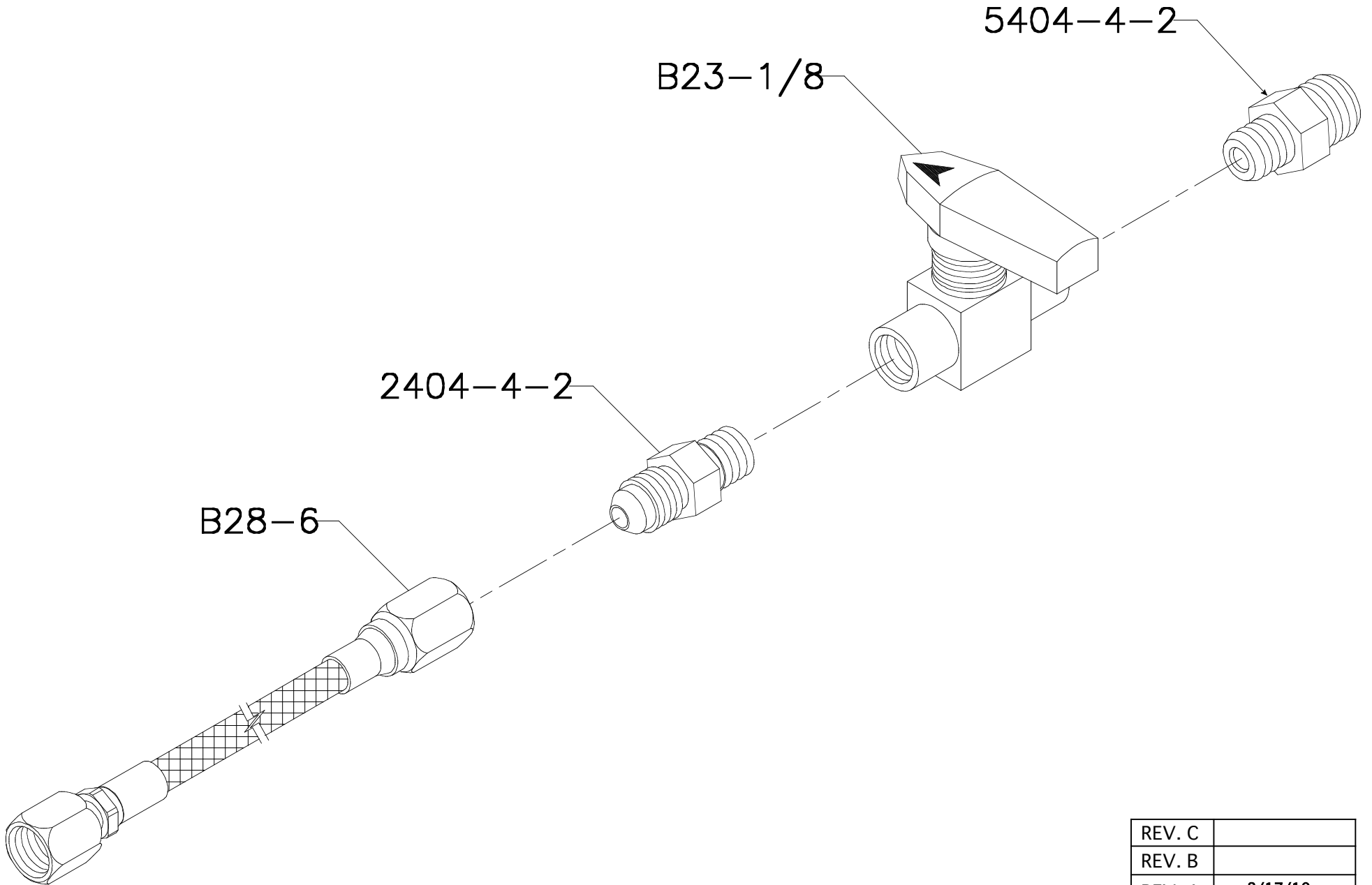
REV. C	8/16/12
REV. B	8/17/09
REV. A	1/18/09
 GS MFG	10/28/04


**SUPERFLOW RESIN INT.MIX
11:1 PUMP ASSEMBLY**



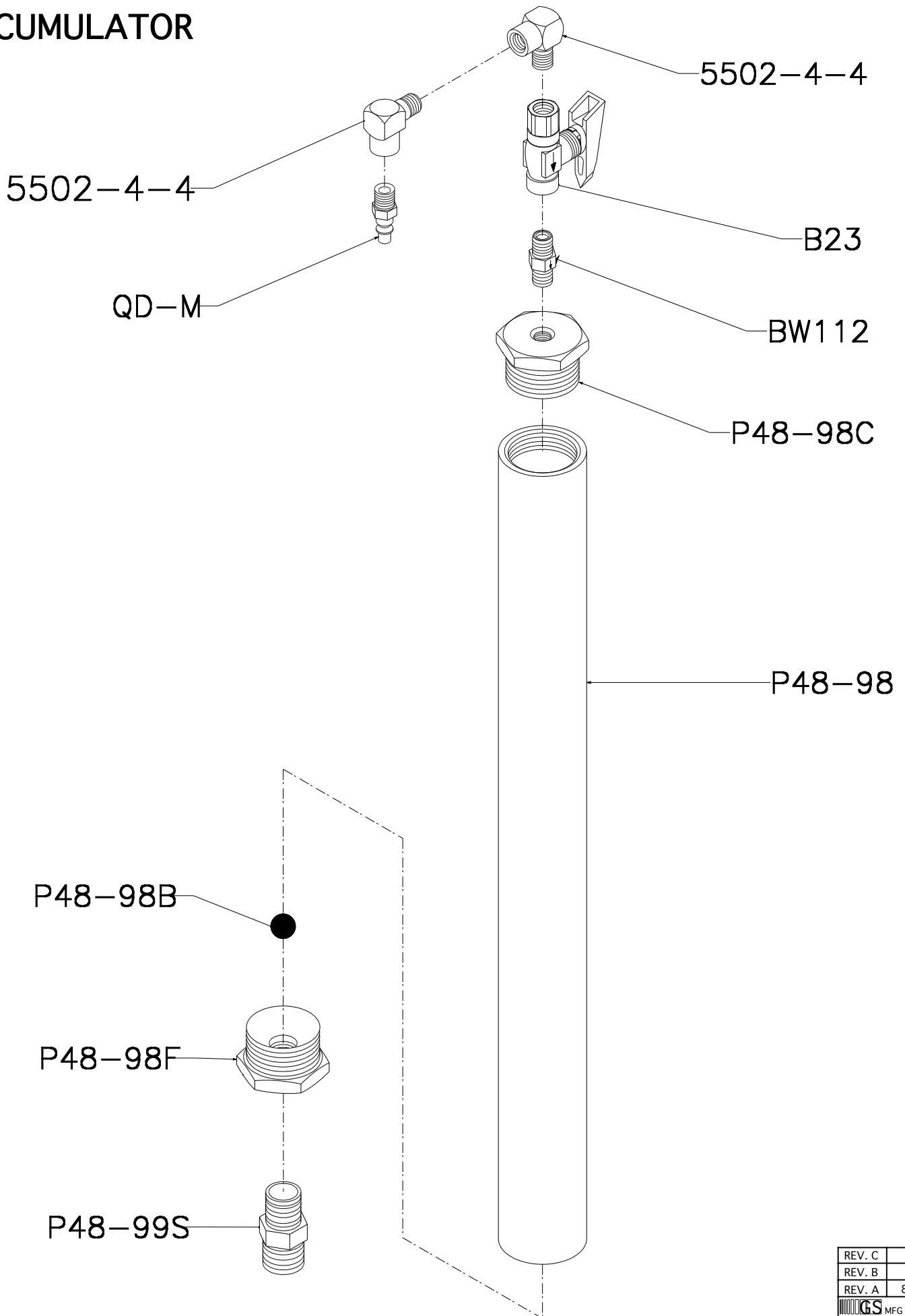
REV. C	8/16/12
REV. B	8/17/09
REV. A	1/18/09
 GS MFG	10/28/04


PURGE VALVE ASSEMBLY



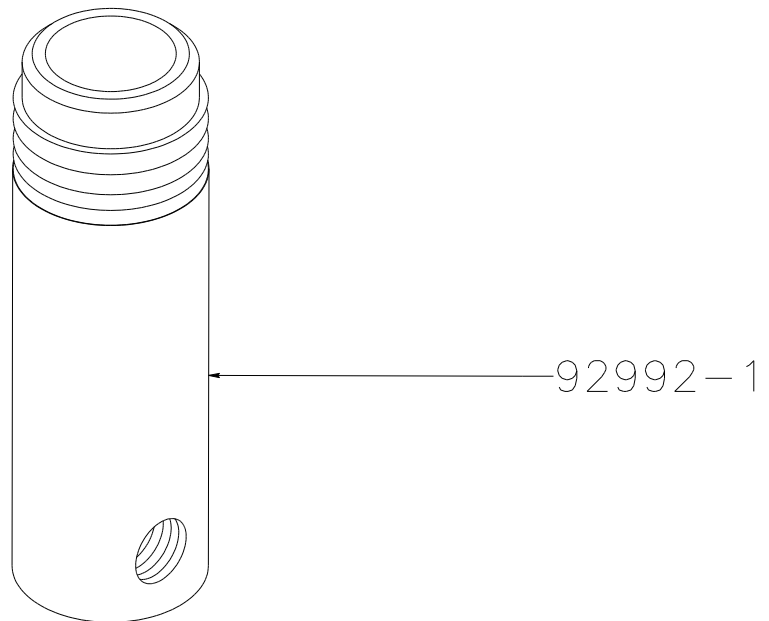
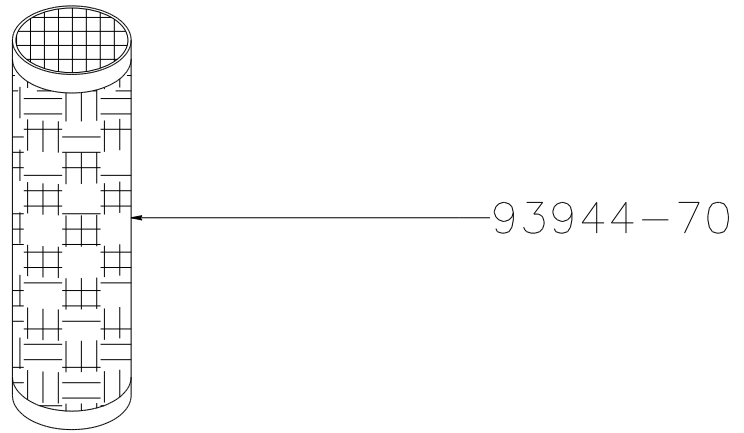
REV. C	
REV. B	
REV. A	2/17/10
 GS MFG	1/15/03


ACCUMULATOR



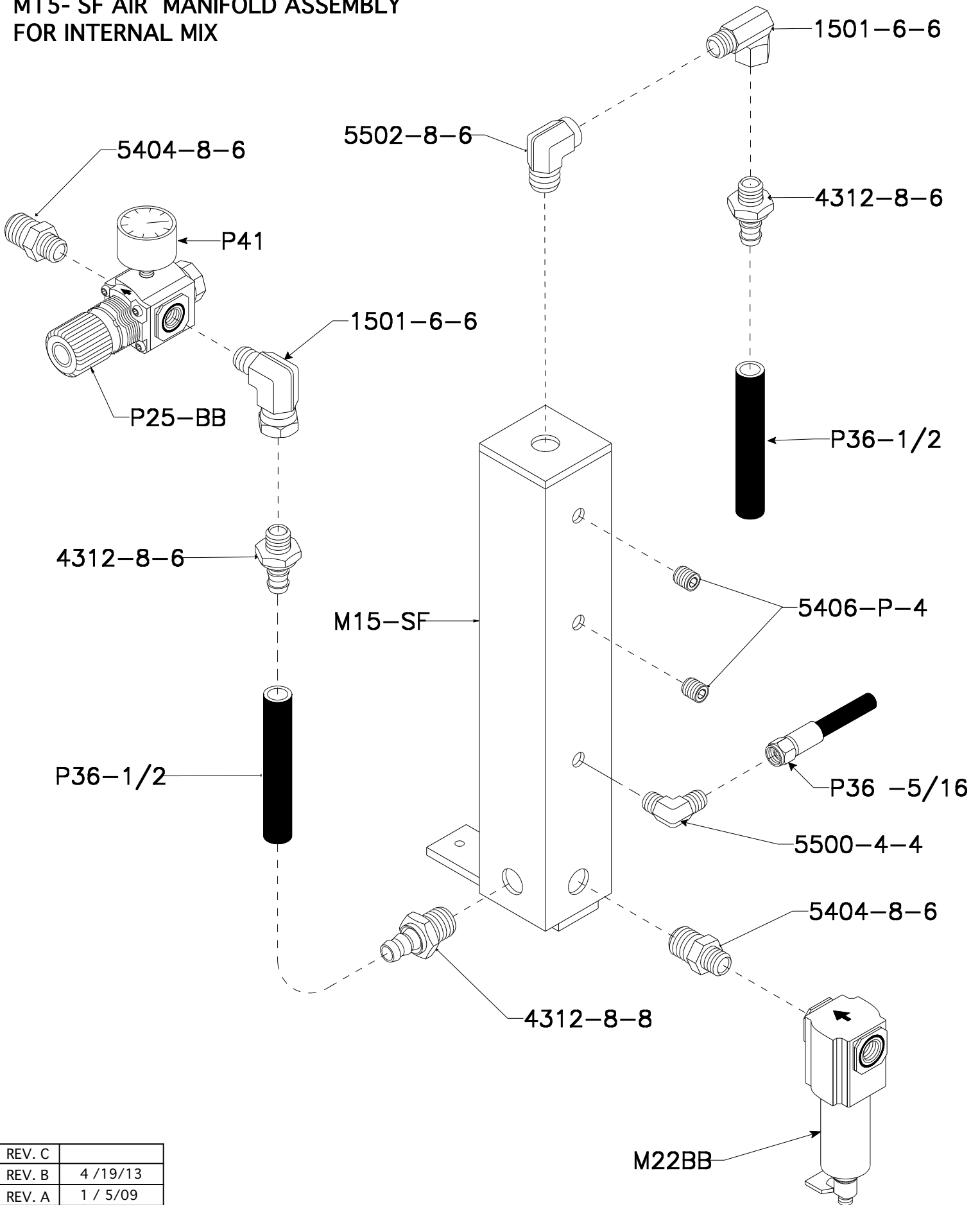
REV. C	
REV. B	
REV. A	8/ 1 /14
 MFG	6/ 2 /03


P31 MATERIAL FILTER



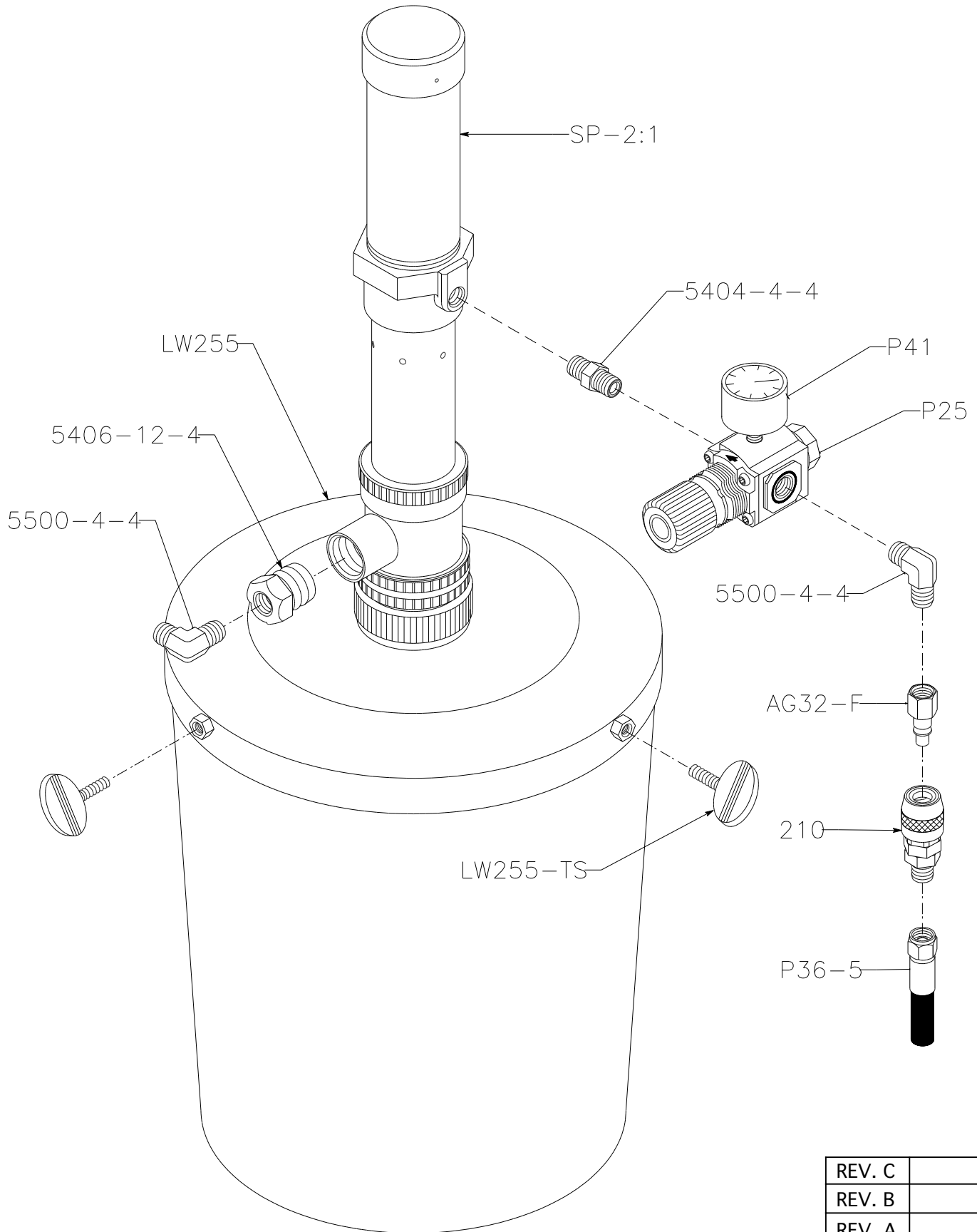
REV. C	
REV. B	7/23/13
REV. A	6/27/00
 GS MFG	7/31/97


**M15- SF AIR MANIFOLD ASSEMBLY
FOR INTERNAL MIX**



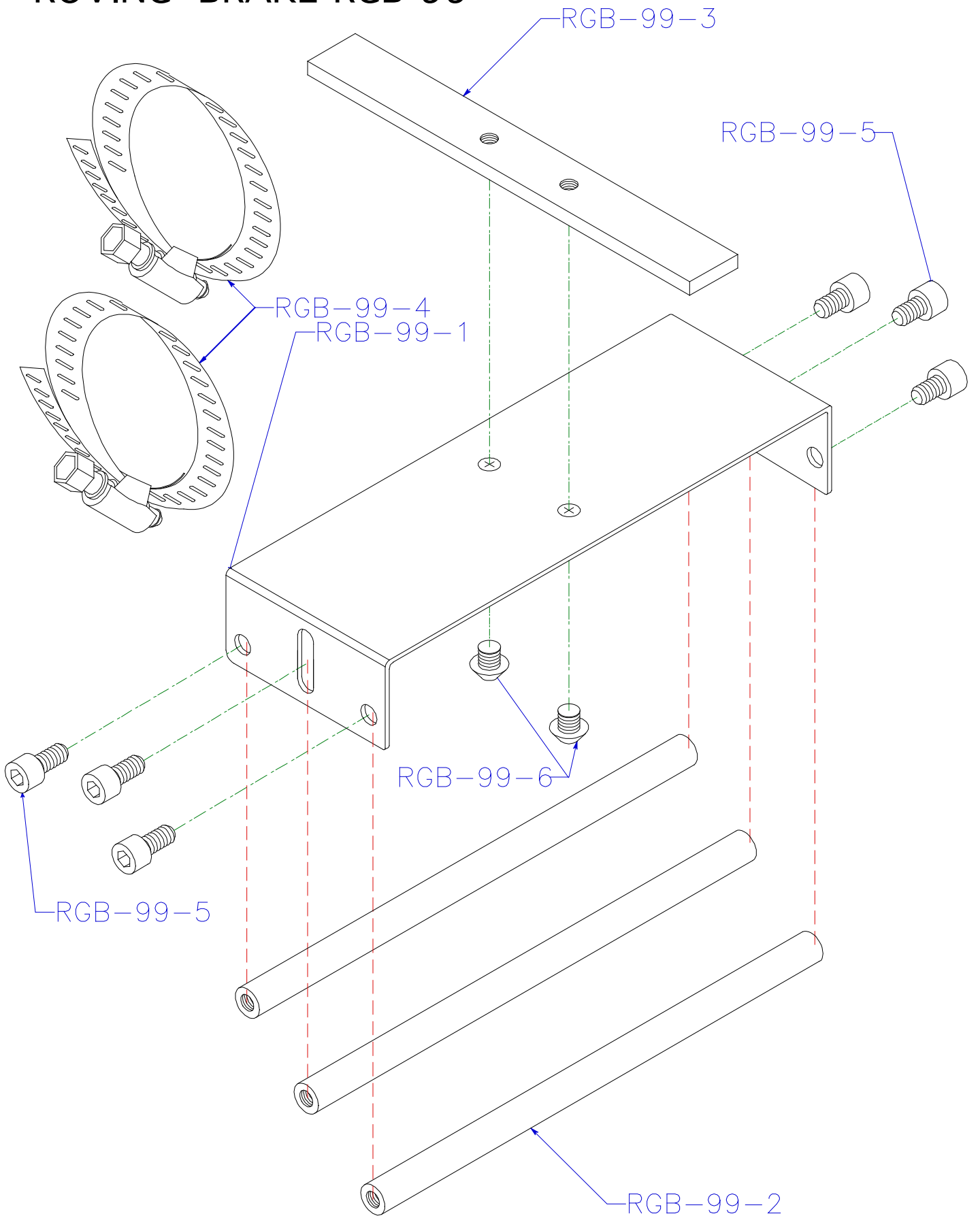
REV. C	
REV. B	4 / 19 / 13
REV. A	1 / 5 / 09
 GS MFG	1 / 28 / 08

SOLVENT PUMP

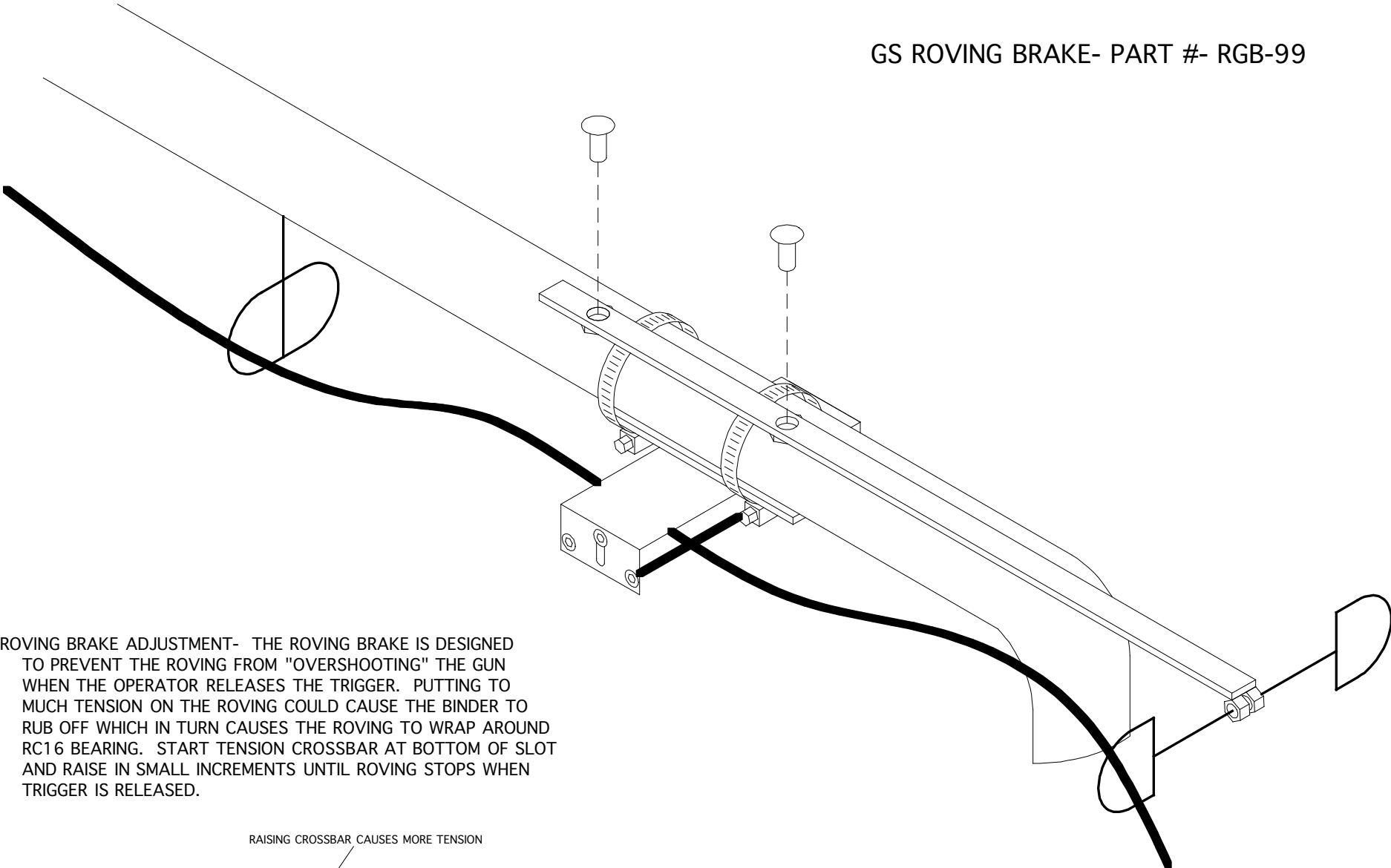


REV. C	
REV. B	
REV. A	
 MFG	11 /13/ 12

ROVING BRAKE-RGB-99

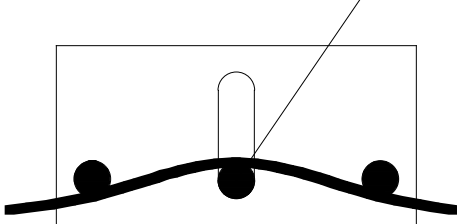


GS ROVING BRAKE- PART #- RGB-99

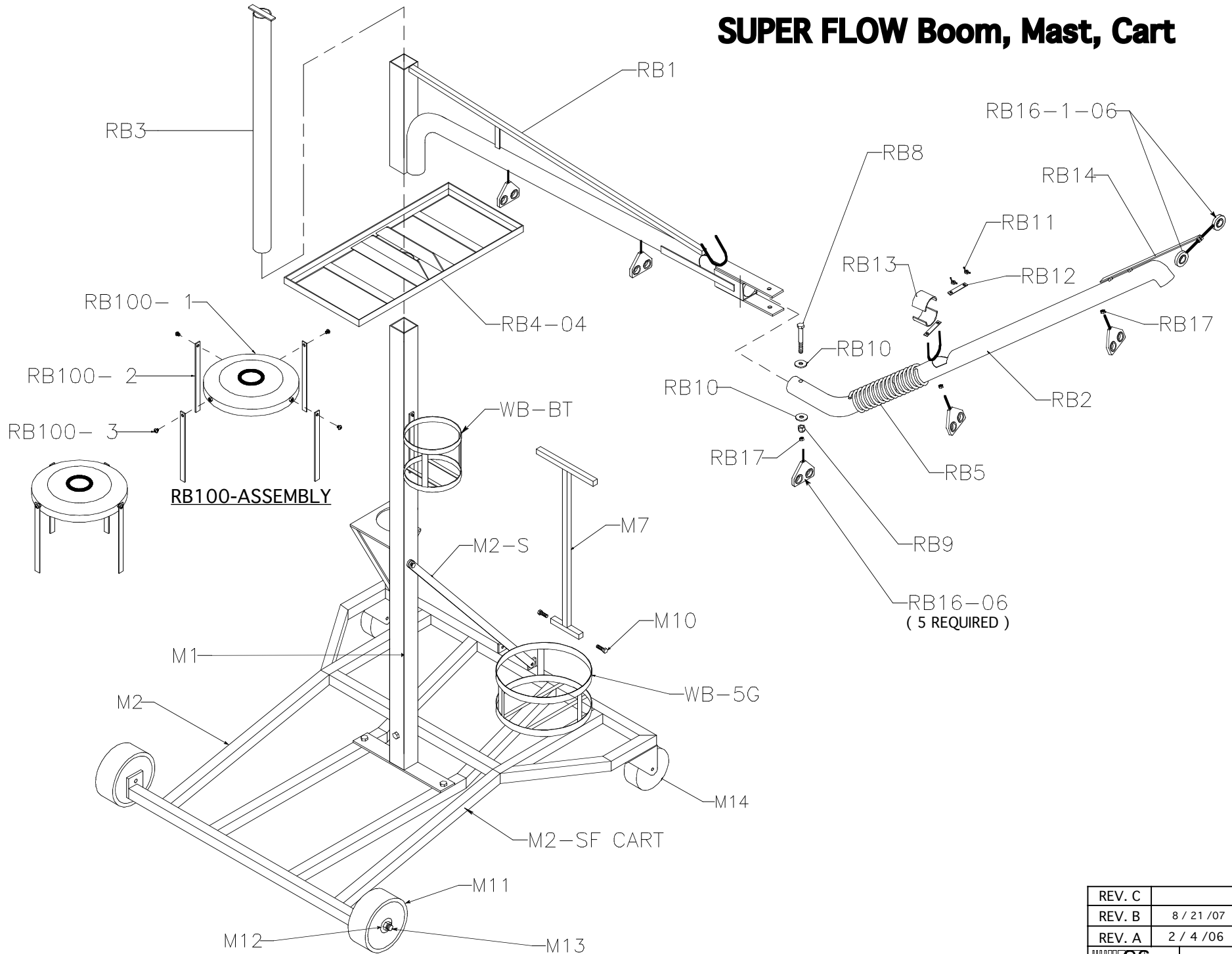



ROVING BRAKE ADJUSTMENT- THE ROVING BRAKE IS DESIGNED TO PREVENT THE ROVING FROM "OVERSHOOTING" THE GUN WHEN THE OPERATOR RELEASES THE TRIGGER. PUTTING TOO MUCH TENSION ON THE ROVING COULD CAUSE THE BINDER TO RUB OFF WHICH IN TURN CAUSES THE ROVING TO WRAP AROUND RC16 BEARING. START TENSION CROSSBAR AT BOTTOM OF SLOT AND RAISE IN SMALL INCREMENTS UNTIL ROVING STOPS WHEN TRIGGER IS RELEASED.

RAISING CROSSBAR CAUSES MORE TENSION

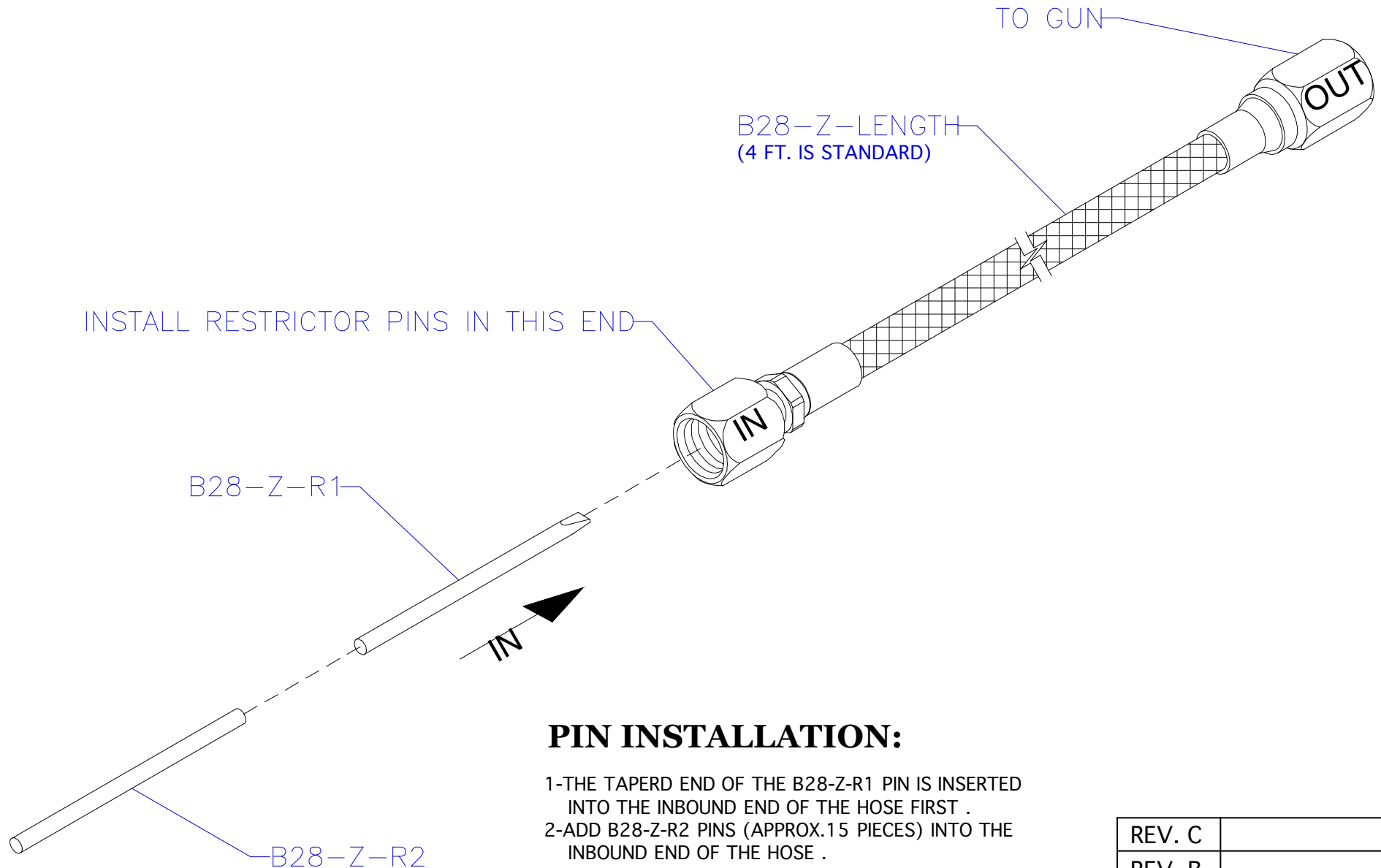


SUPER FLOW Boom, Mast, Cart



REV. C	
REV. B	8 / 21 / 07
REV. A	2 / 4 / 06
 GS MFG	10/28/04


MEKP HOSE W / RESTRICTOR PINS



PIN INSTALLATION:

- 1-THE TAPERD END OF THE B28-Z-R1 PIN IS INSERTED INTO THE INBOUND END OF THE HOSE FIRST .
- 2-ADD B28-Z-R2 PINS (APPROX.15 PIECES) INTO THE INBOUND END OF THE HOSE .
- 3-ATTACH HOSE TO THE GUN / HOSE ASSEMBLY .

IMPROPER INSTALLATION OF THE PINS WILL BLOCK THE FLOW OF MEKP.

REV. C	
REV. B	
REV. A	
 MFG	12/19/01