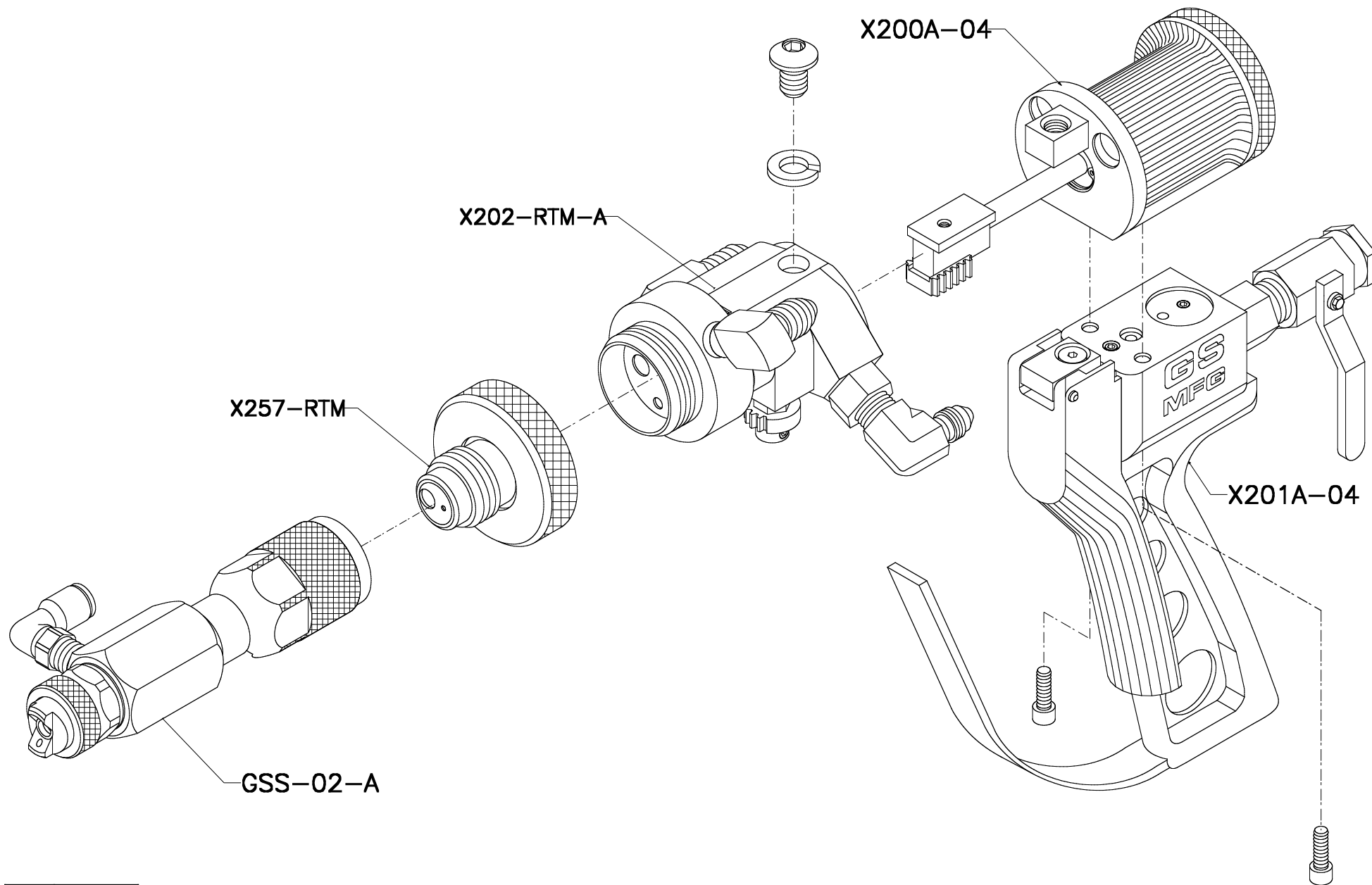


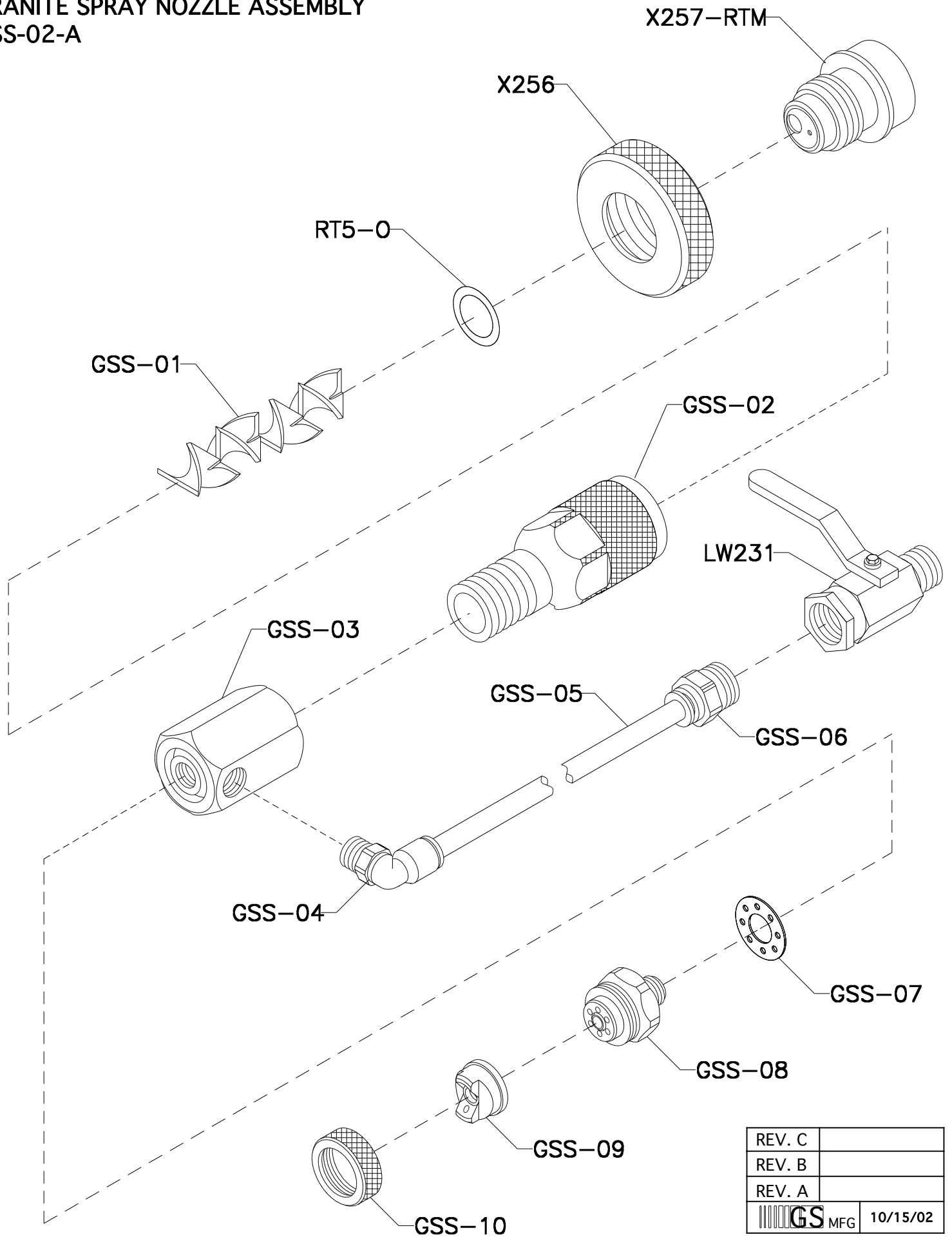
# X2004GR GRANITE GUN SUB ASSEMBLIES




REV.	8/26/14
REV. B	5/26/09
REV.	11/18/08
GS MFG	1/24/03



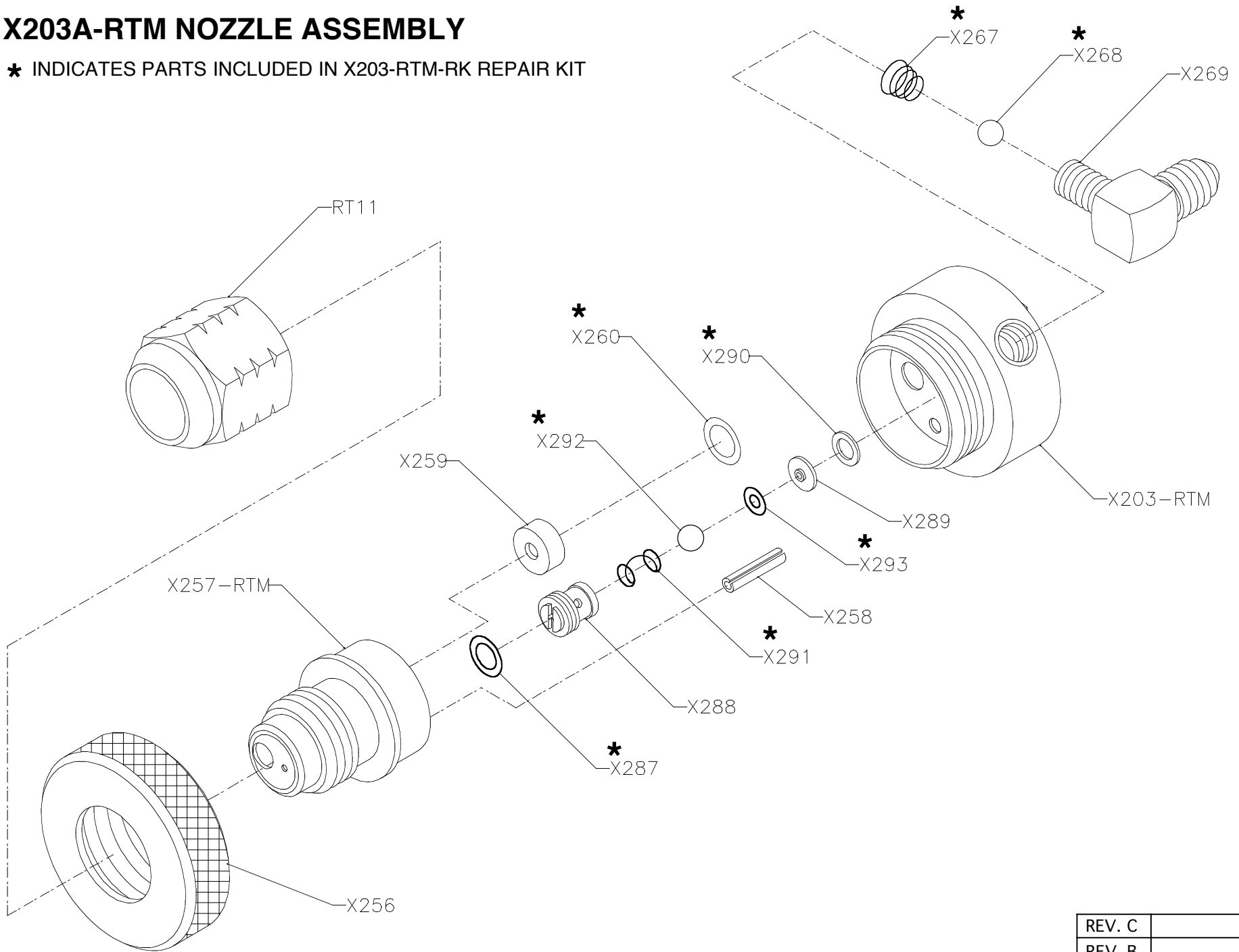
**GRANITE SPRAY NOZZLE ASSEMBLY  
GSS-02-A**




REV. C	
REV. B	
REV. A	
 MFG	10/15/02

# X203A-RTM NOZZLE ASSEMBLY

\* INDICATES PARTS INCLUDED IN X203-RTM-RK REPAIR KIT



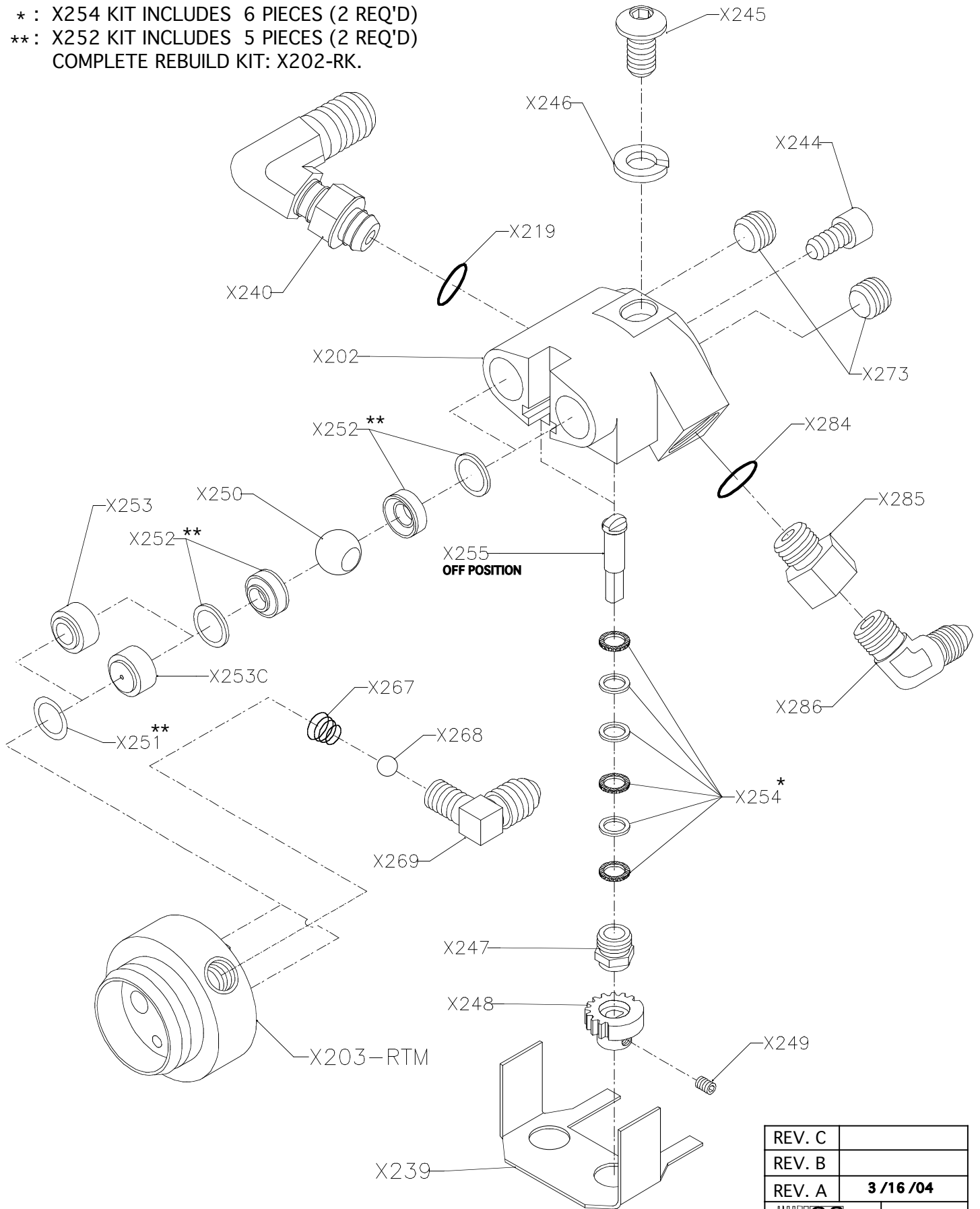
REV. C	
REV. B	
REV. A	3 / 6 / 02
	


# X202-RTM FLUID SECTION ASSEMBLY

\* : X254 KIT INCLUDES 6 PIECES (2 REQ'D)

\*\* : X252 KIT INCLUDES 5 PIECES (2 REQ'D)

COMPLETE REBUILD KIT: X202-RK.

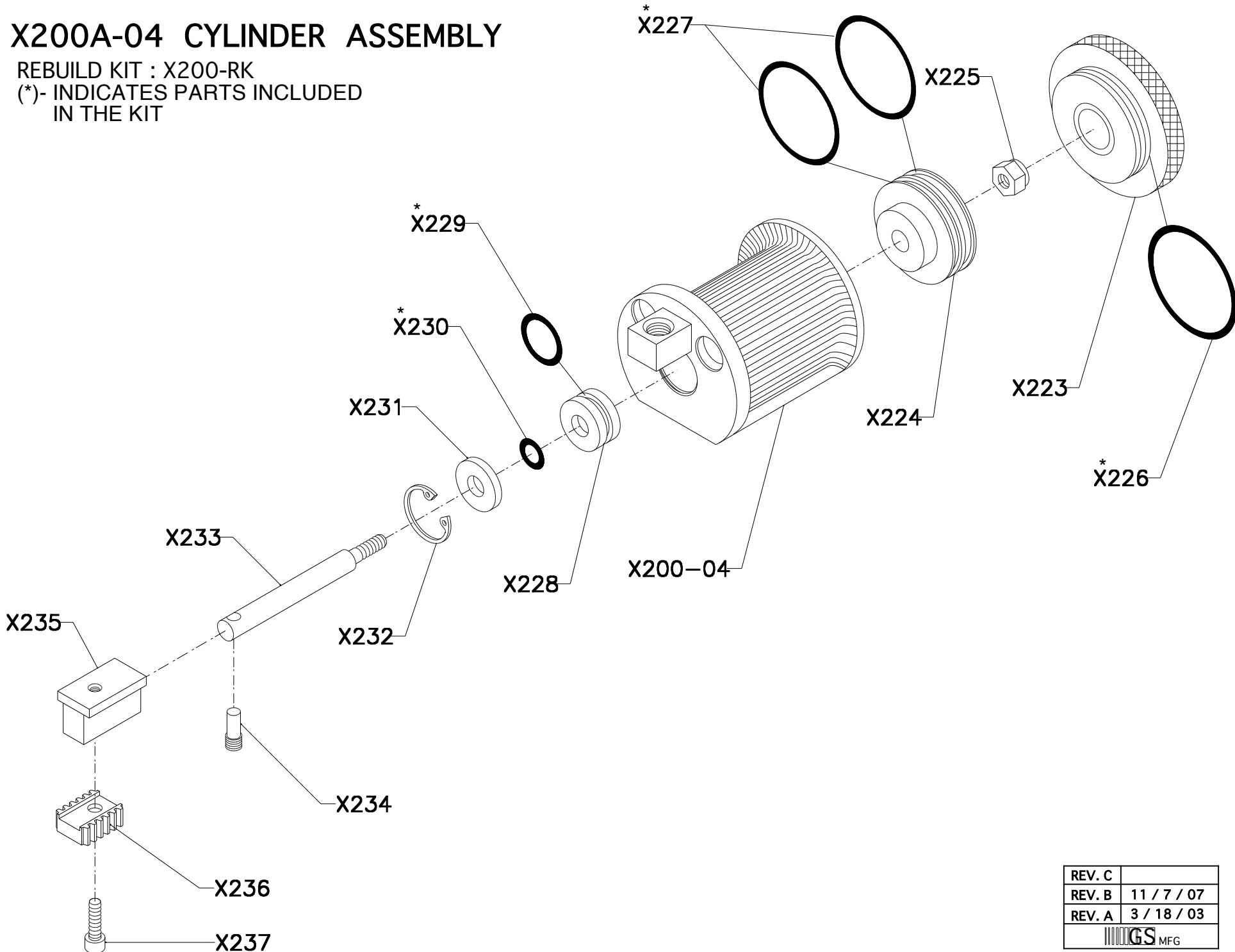


REV. C	
REV. B	
REV. A	3/16/04
 GS MFG	10/15/02

# X200A-04 CYLINDER ASSEMBLY

REBUILD KIT : X200-RK

(\*)- INDICATES PARTS INCLUDED IN THE KIT

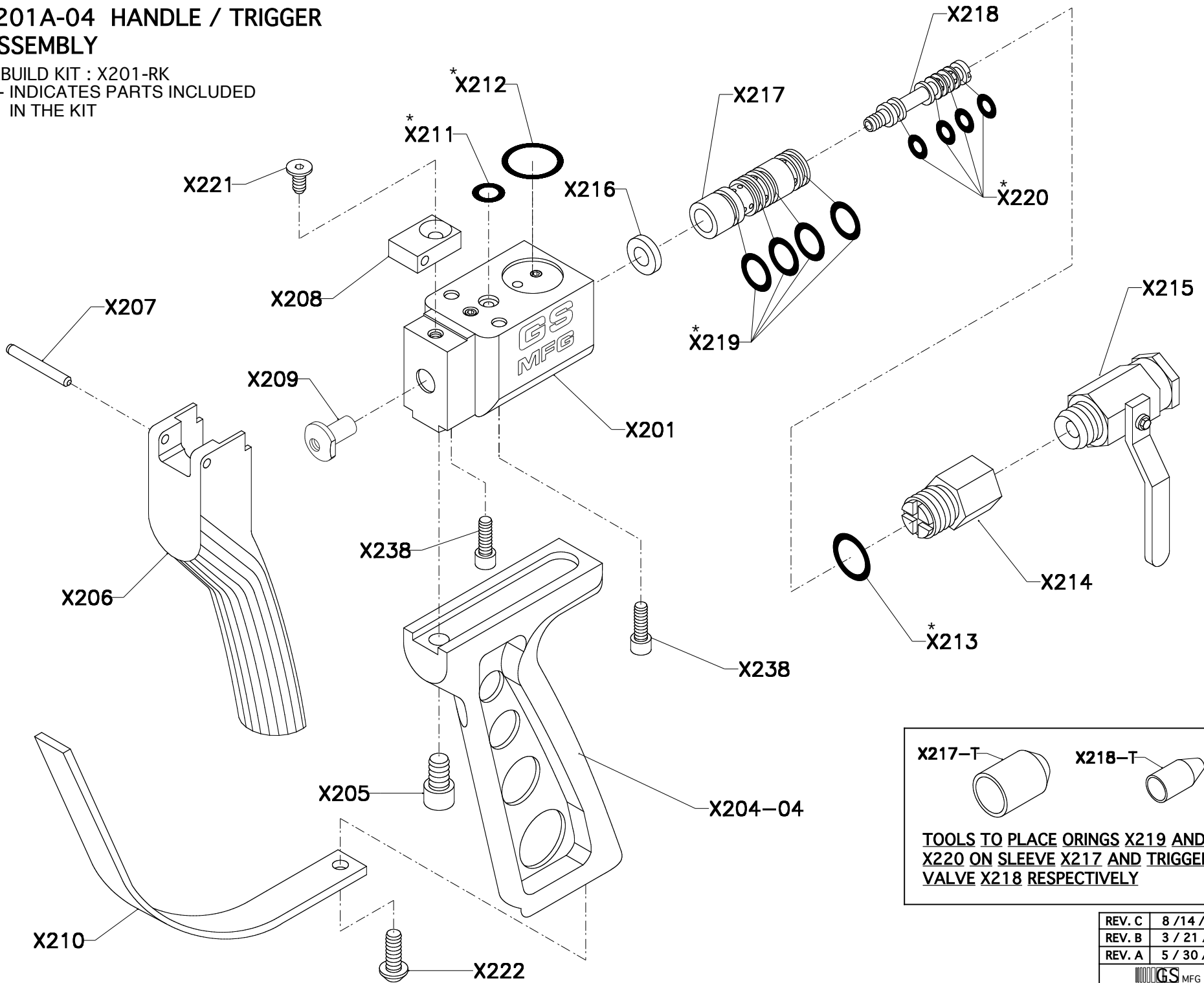


REV. C	
REV. B	11 / 7 / 07
REV. A	3 / 18 / 03

# X201A-04 HANDLE / TRIGGER ASSEMBLY

REBUILD KIT : X201-RK

(\*)- INDICATES PARTS INCLUDED IN THE KIT



X217-T

X218-T

**TOOLS TO PLACE ORINGS X219 AND X220 ON SLEEVE X217 AND TRIGGER VALVE X218 RESPECTIVELY**

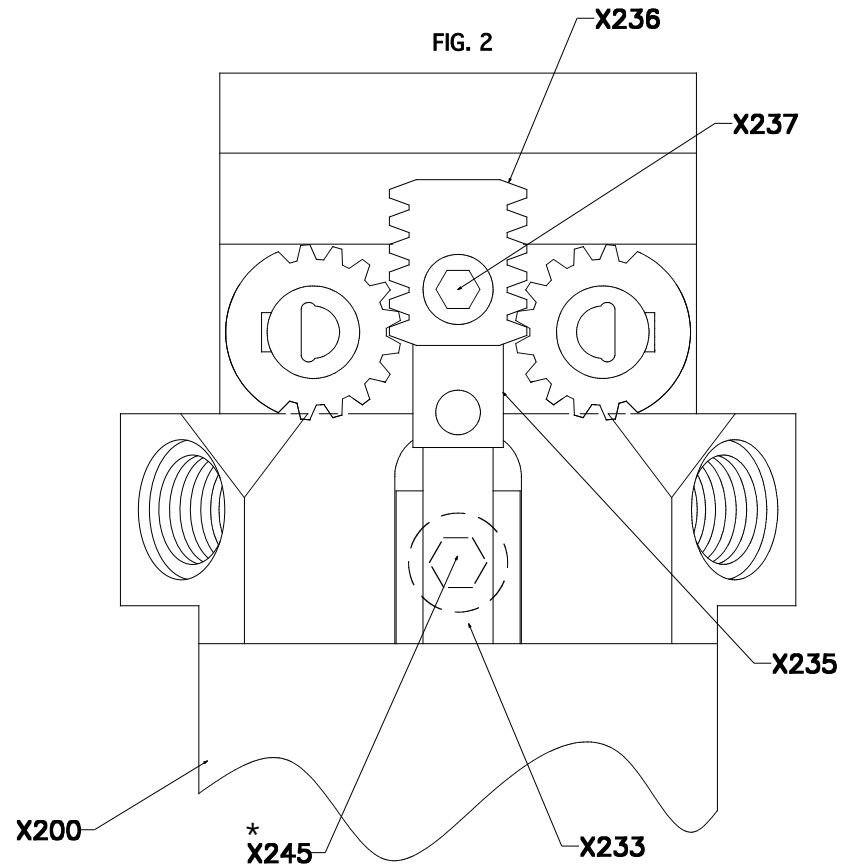
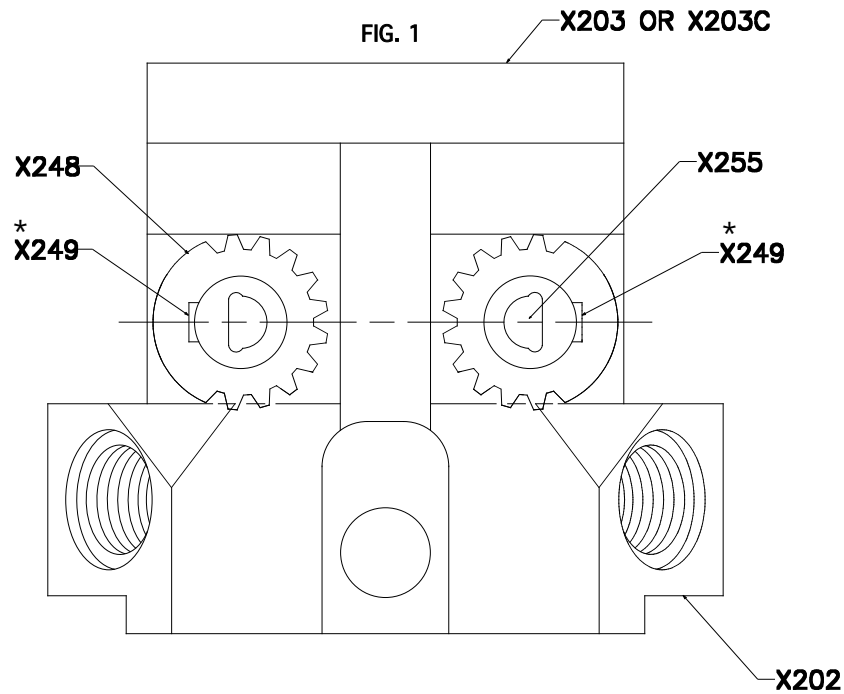
REV. C	8 / 14 / 14
REV. B	3 / 21 / 04
REV. A	5 / 30 / 03




## ALIGNMENT OF X202 FLUID SECTION ASSEMBLY TO X200 CYLINDER ASSEMBLY

1. BE SURE THAT X249(\*) SET SCREW IS TIGHTENED TO THE FLAT ON X255 STEM AND FACING OUTWARDS.
2. IF THIS IS DONE CORRECTLY, THE BALLS WILL BE IN THE OFF POSITION. THE TIMING OF THE GEARS IS VERY IMPORTANT SO THAT THE X236 RACK WILL SLIDE INTO POSITION AS SHOWN IN FIG. 2.

3. ATTACH X200 CYLINDER ASSY. TO X202 ASSY. LEAVING THE X245(\*) BOLT LOOSE. MAKE SURE X233 SHAFT IS PUSHED ALL THE WAY FORWARD.
4. INSERT X236 RACK ONTO X235 T-NUT ALIGNED WITH X248 GEARS AS SHOWN IN FIG. 2.
5. AFTER X236 RACK IS SEATED ONTO X235 T-NUT TIGHTEN X237(\*) AND X245(\*) BOLTS.



**NOTE; \* :USE BLUE LOCTITE 242  
ON THE THREADS**

REV. C	
REV. B	7 / 30 / 15
REV. A	2 / 16 / 06
 MFG	12/21/04

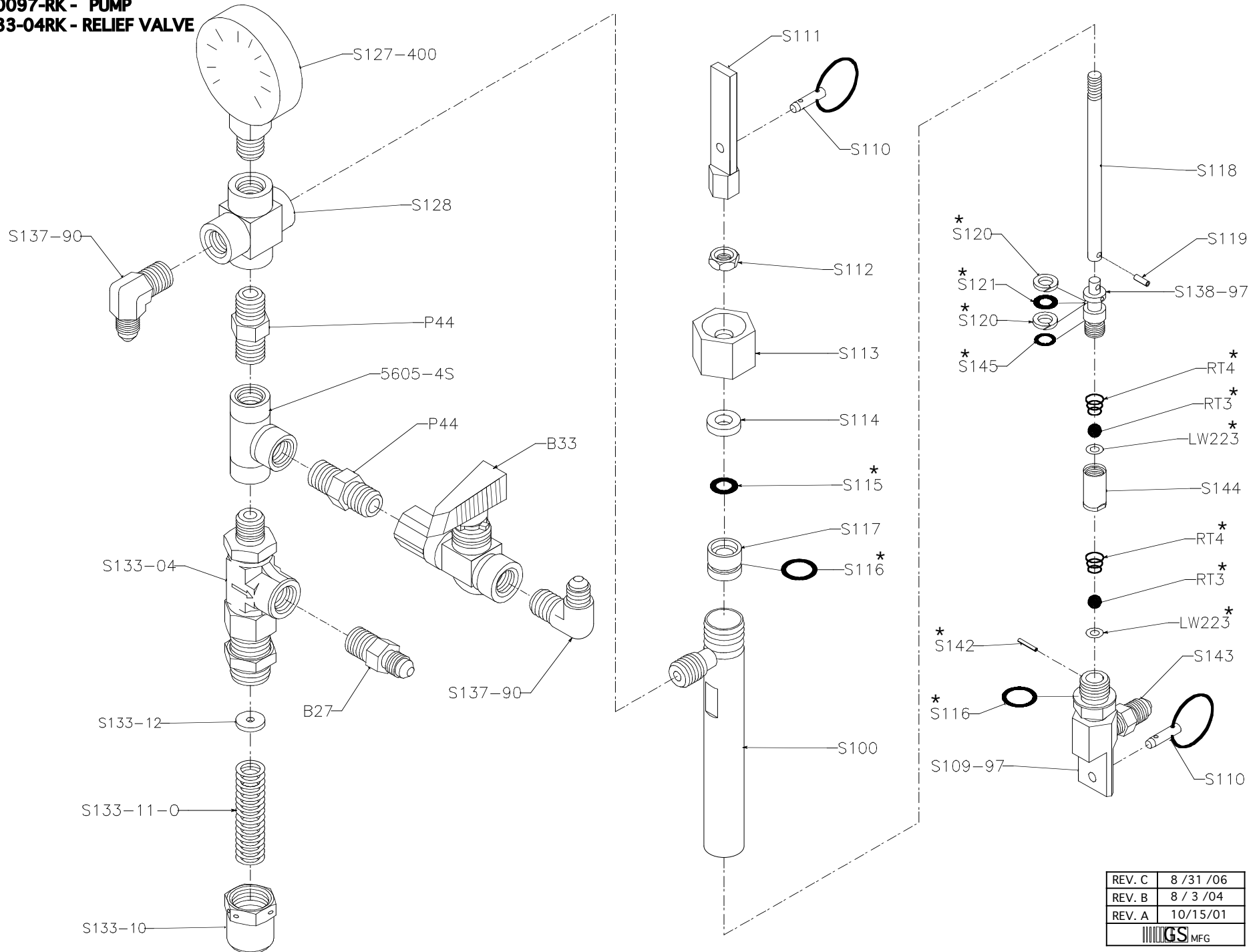


# S1000-400-04

## REBUILD KITS:

\* S10097-RK - PUMP

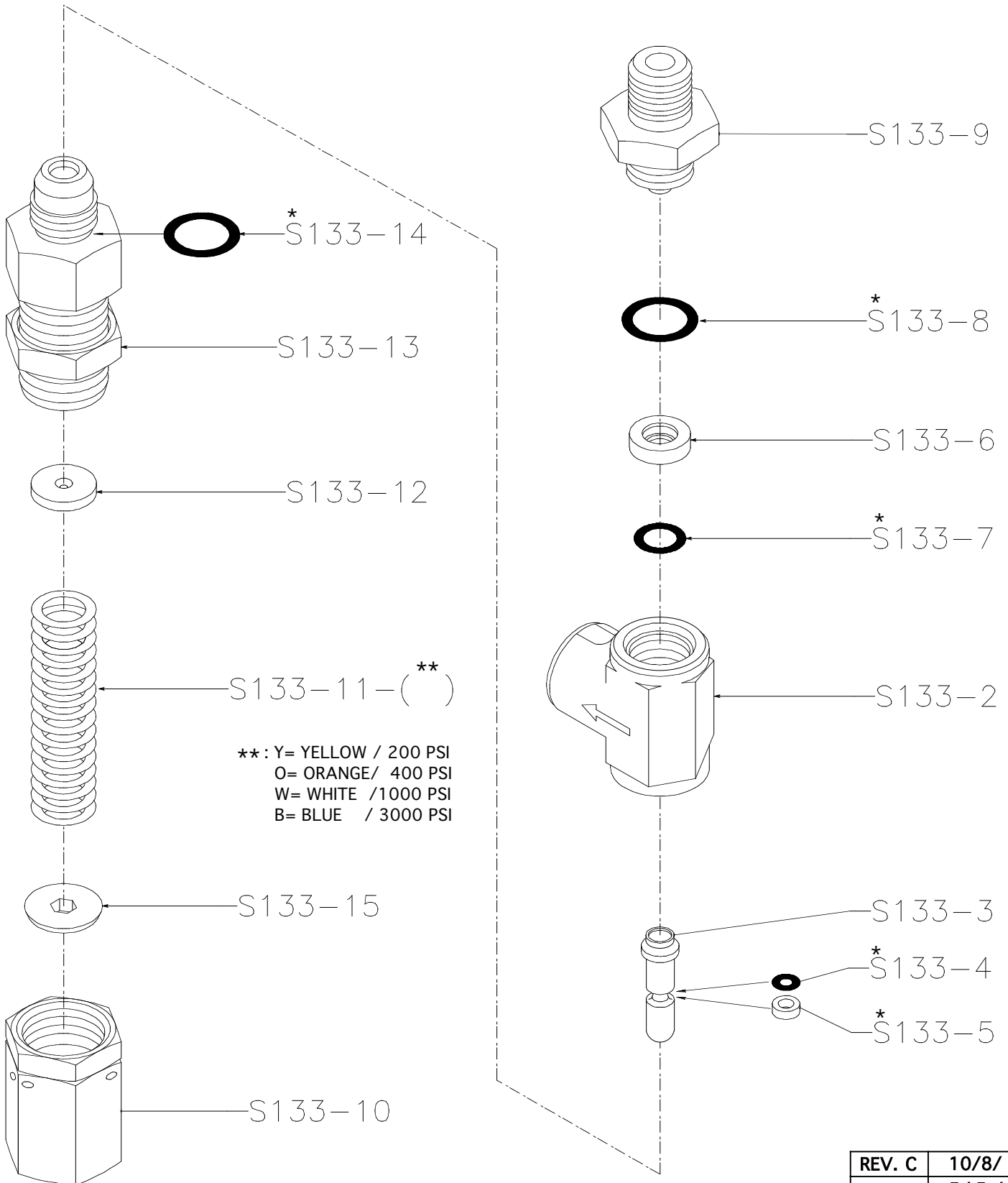
S133-04RK - RELIEF VALVE



REV. C	8 / 31 / 06
REV. B	8 / 3 / 04
REV. A	10 / 15 / 01

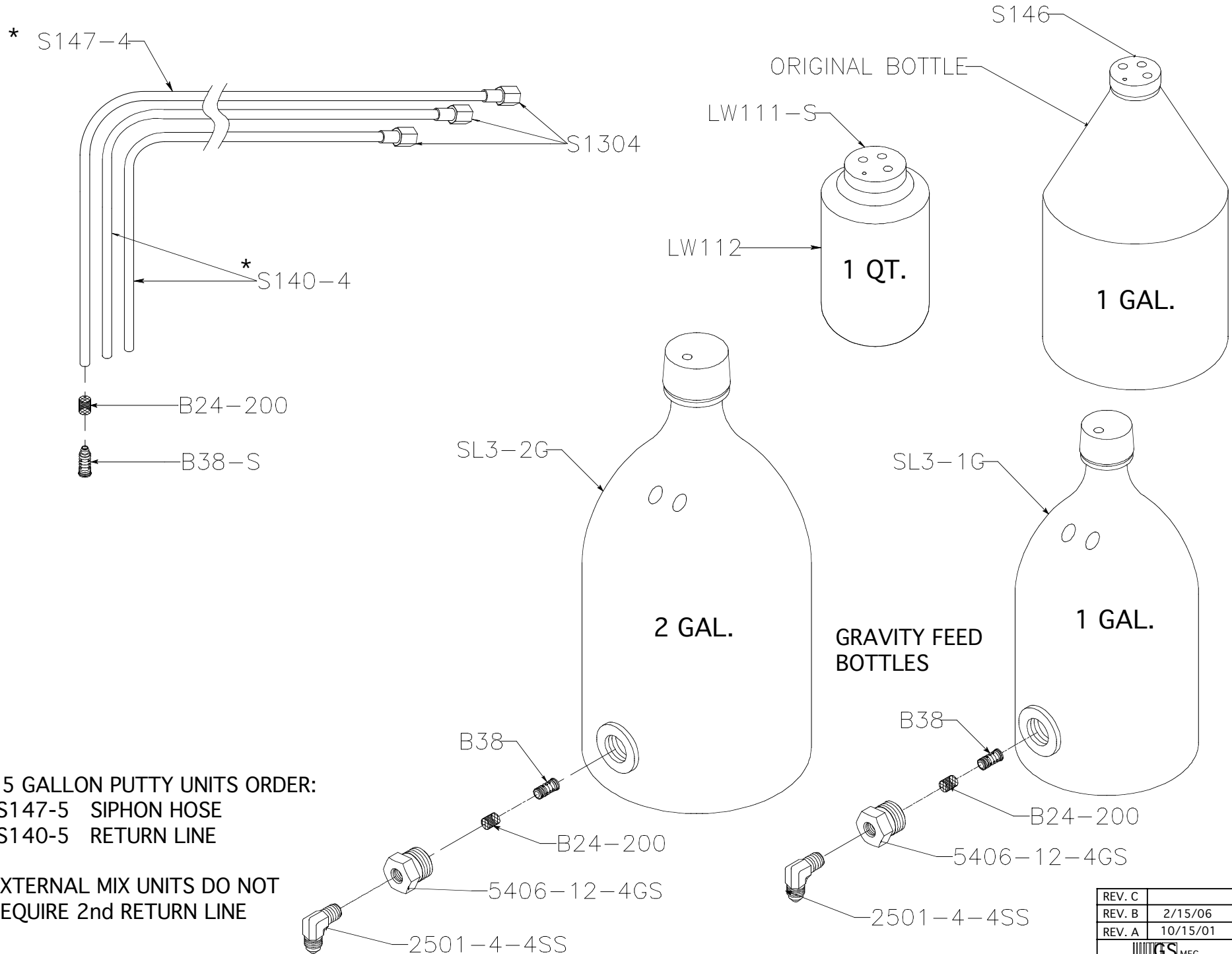
# S133-04 RELIEF VALVE

\* REBUILD KIT: S133-RK-04



REV. C	10/8/ 08
REV. B	5/ 5 / 08
REV. A	10/15/07
GS MFG	8 /3 /04

# MEKP SIPHON HOSES / BOTTLES

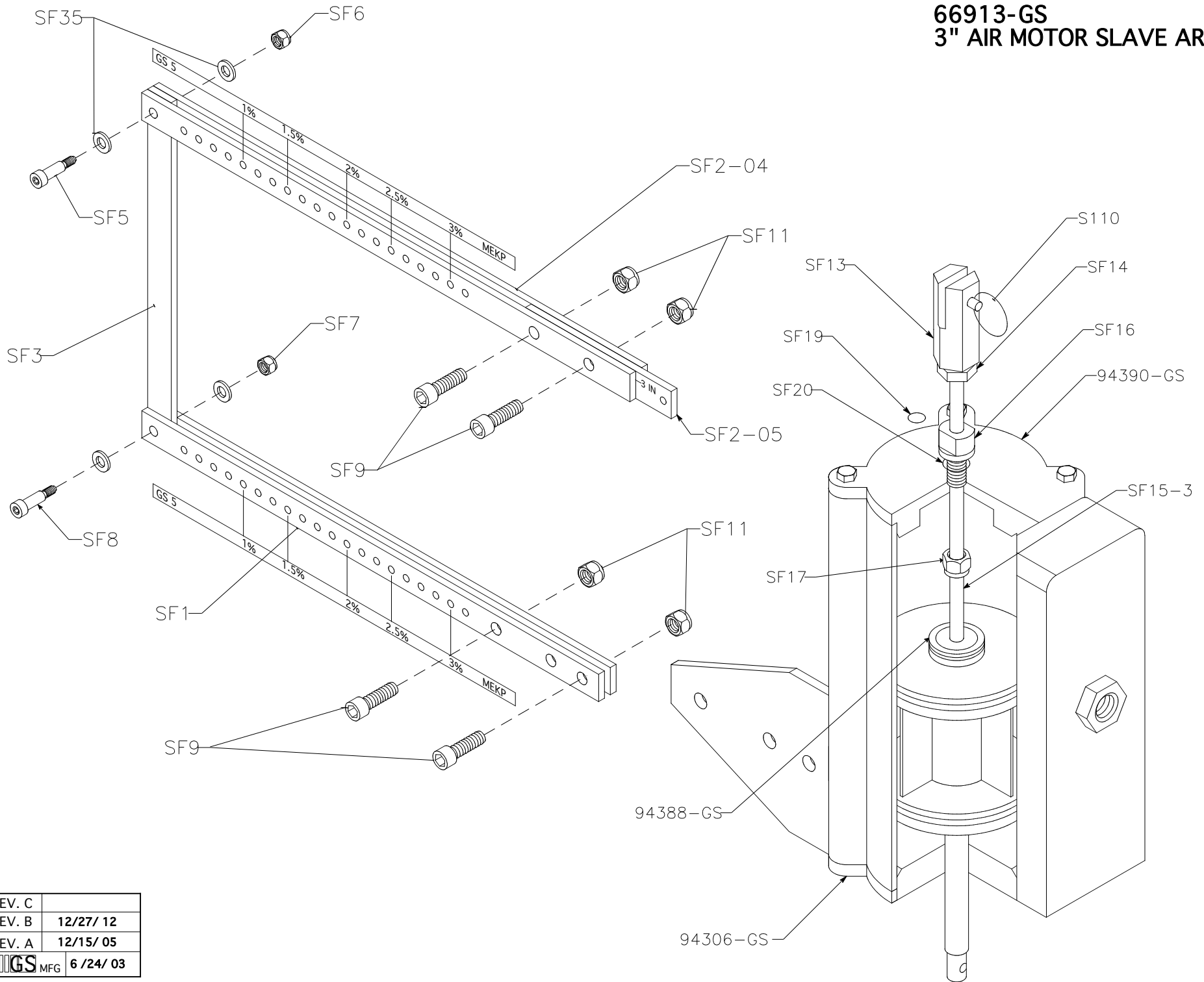


\*. 55 GALLON PUTTY UNITS ORDER:  
 -S147-5 SIPHON HOSE  
 -S140-5 RETURN LINE

EXTERNAL MIX UNITS DO NOT  
 REQUIRE 2nd RETURN LINE

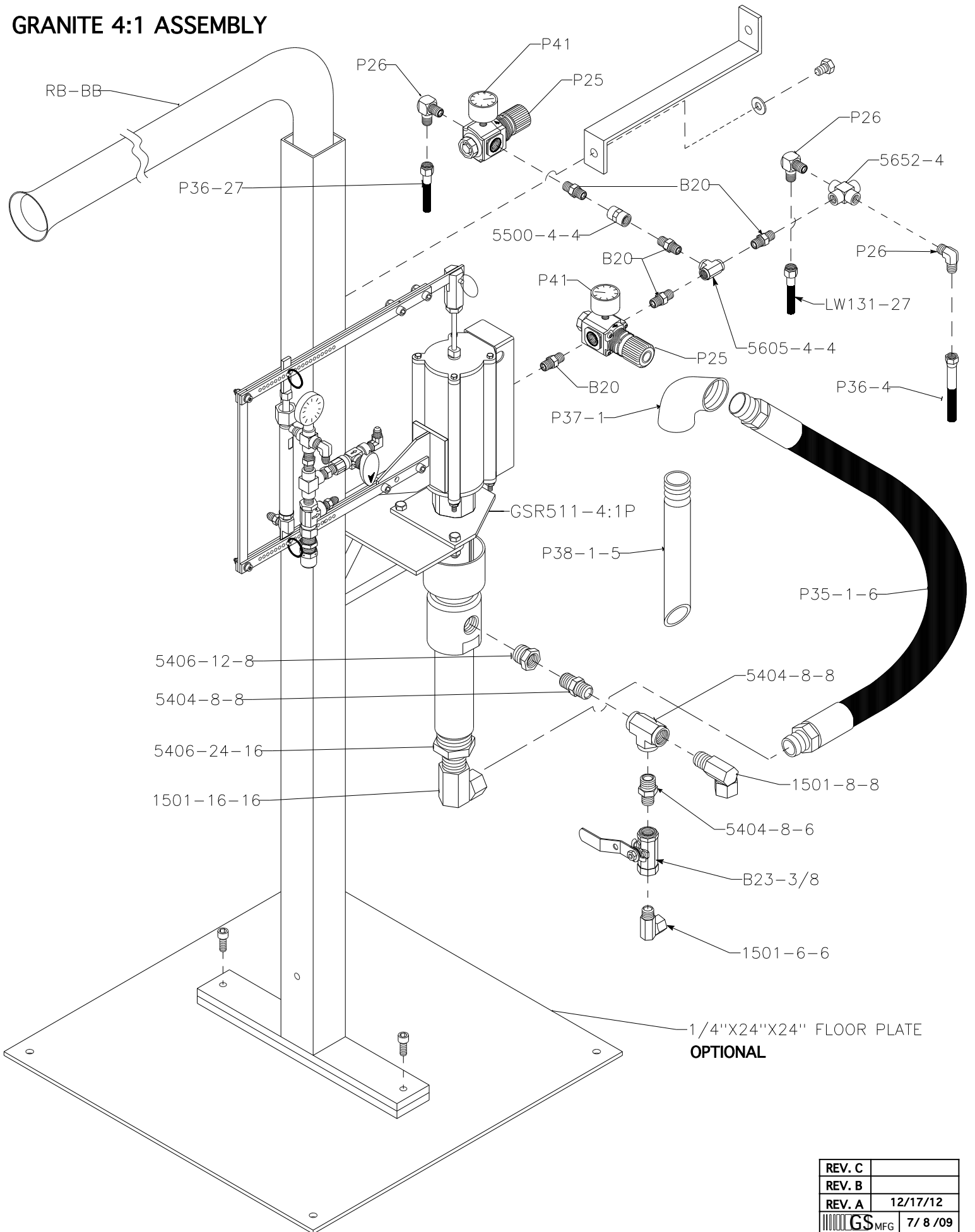
REV. C	
REV. B	2/15/06
REV. A	10/15/01


# 66913-GS 3" AIR MOTOR SLAVE ARM



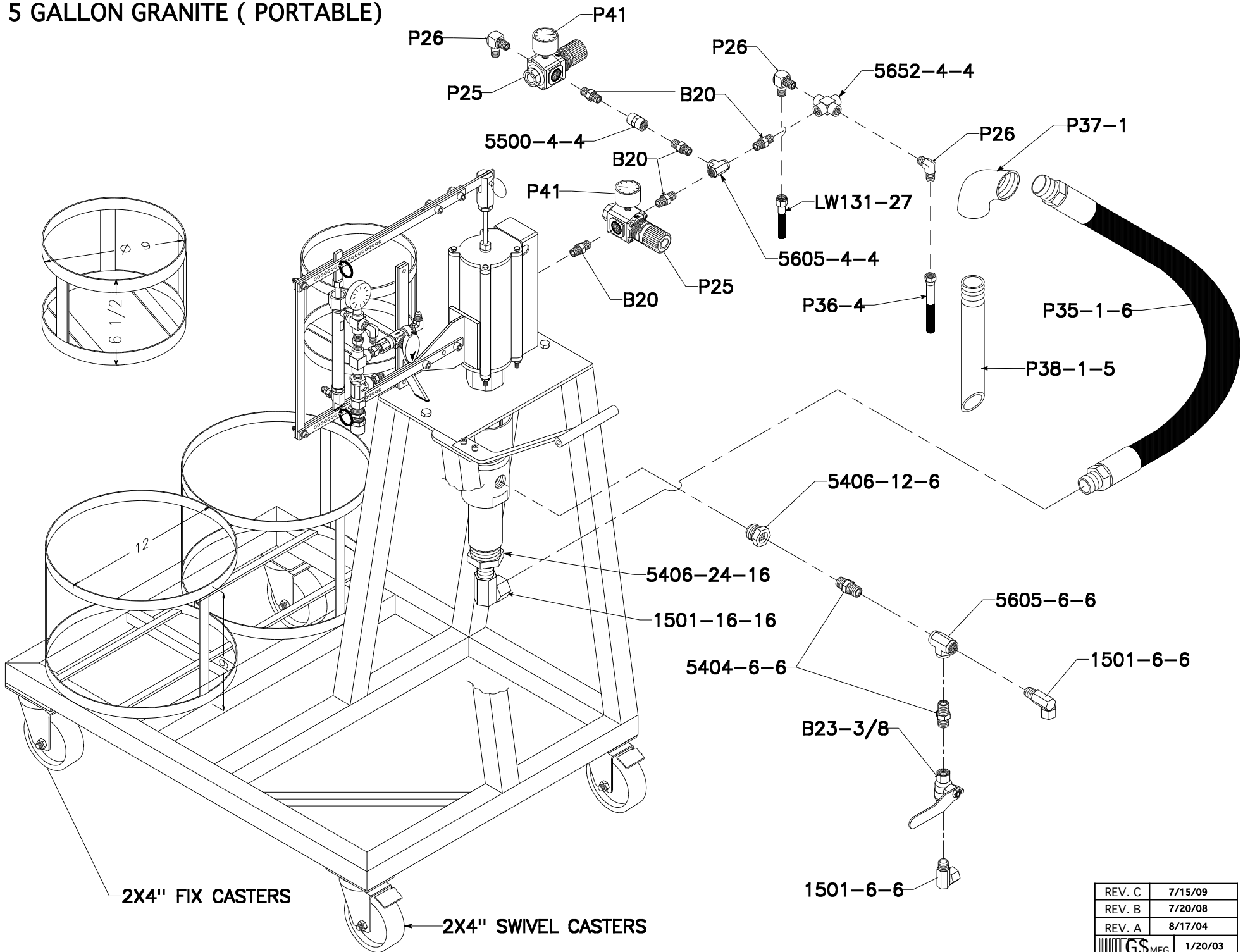
REV. C	
REV. B	12/27/12
REV. A	12/15/05
GS MFG	6/24/03

# GRANITE 4:1 ASSEMBLY



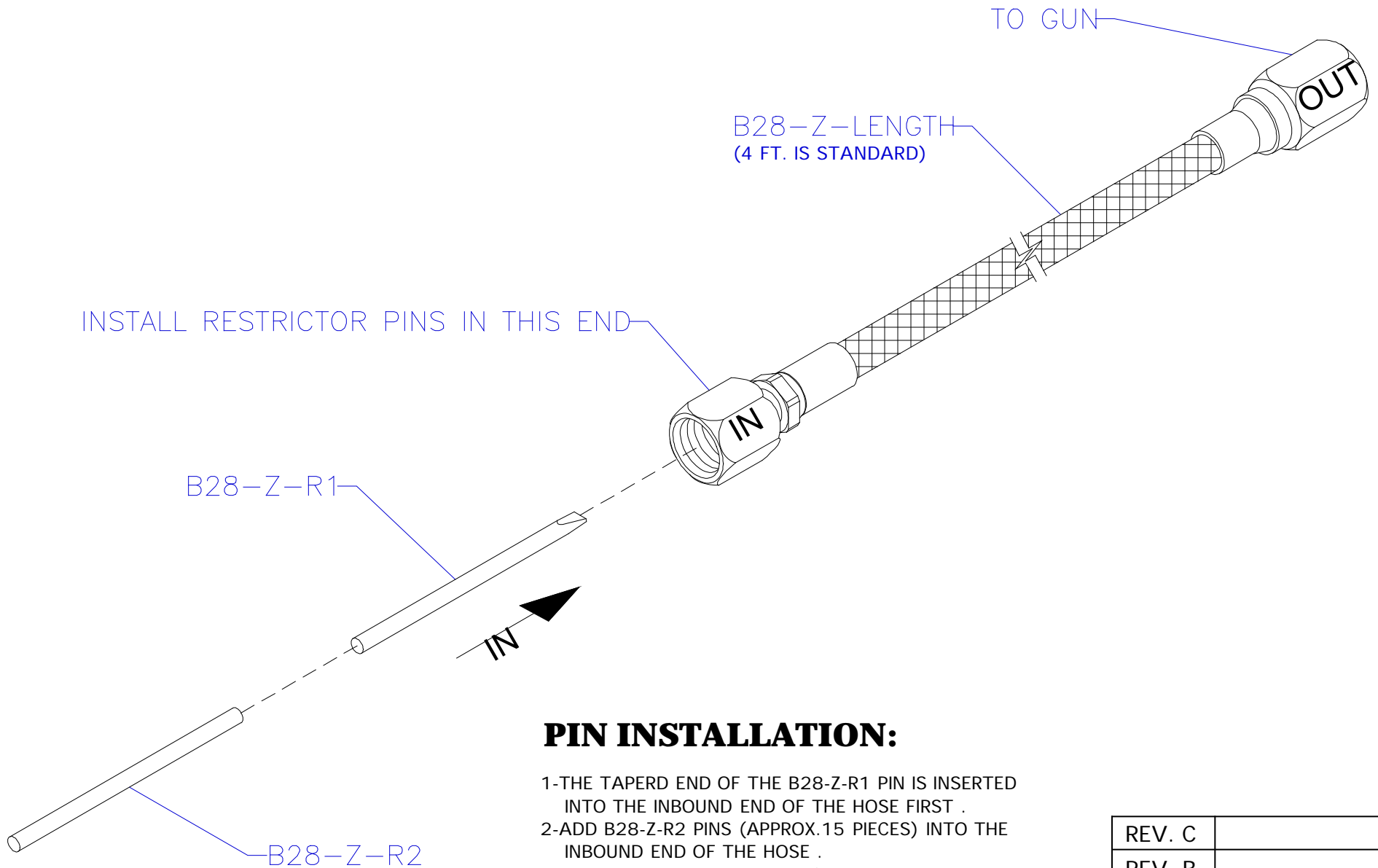
REV. C	
REV. B	
REV. A	12/17/12
 MFG	7/ 8 /09

# 5 GALLON GRANITE ( PORTABLE)



REV. C	7/15/09
REV. B	7/20/08
REV. A	8/17/04
GS MFG	1/20/03


# MEKP HOSE W / RESTRICTOR PINS



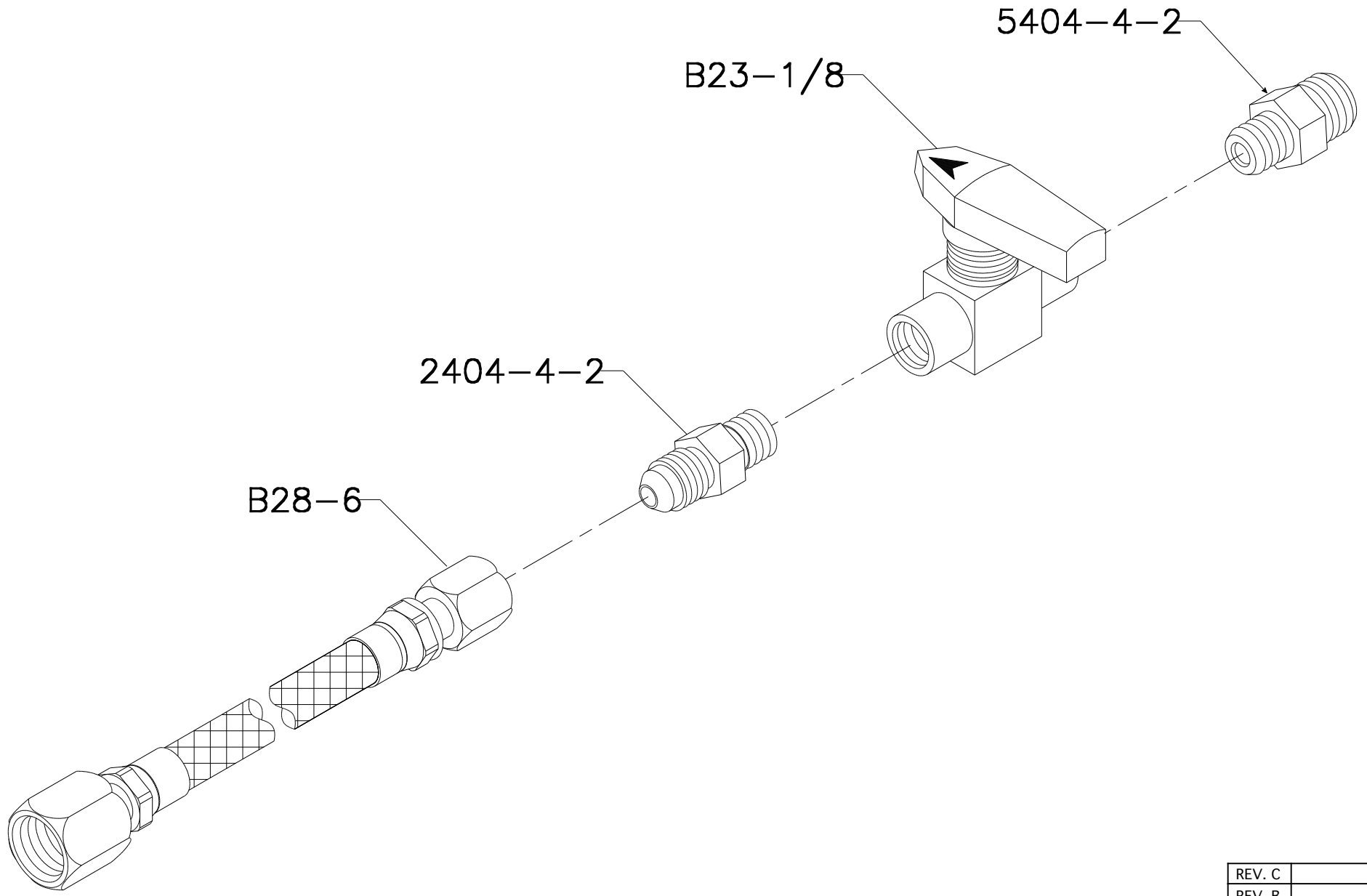
## **PIN INSTALLATION:**


- 1-THE TAPERD END OF THE B28-Z-R1 PIN IS INSERTED INTO THE INBOUND END OF THE HOSE FIRST .
- 2-ADD B28-Z-R2 PINS (APPROX.15 PIECES) INTO THE INBOUND END OF THE HOSE .
- 3-ATTACH HOSE TO THE GUN / HOSE ASSEMBLY .

**IMPROPER INSTALLATION OF THE PINS WILL BLOCK THE FLOW OF MEKP.**

REV. C	
REV. B	
REV. A	
 MFG	12/19/01

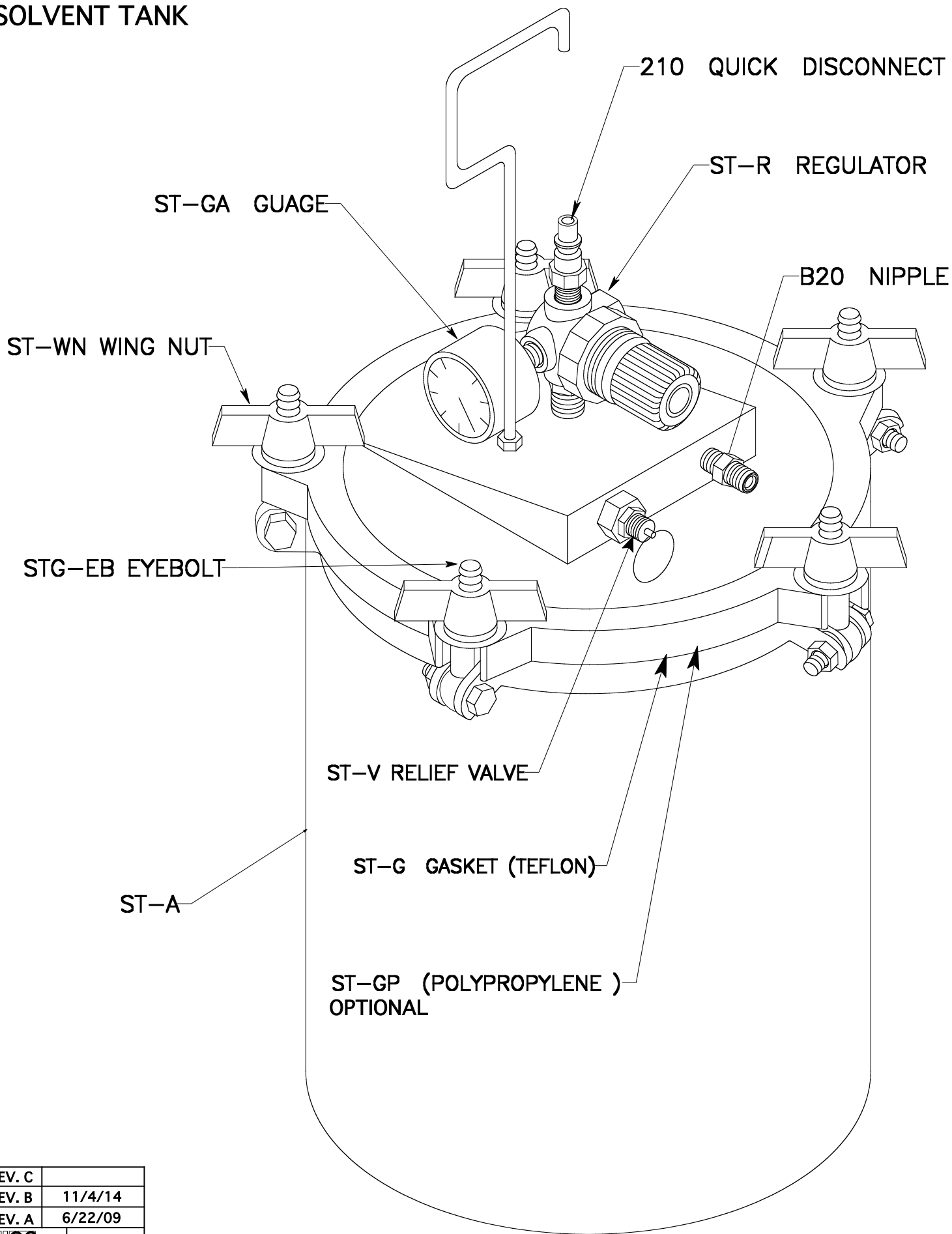
# GRANITE PURGE VALVE




REV. C	
REV. B	
REV. A	
 MFG	1/15/03



# SOLVENT TANK



REV. C	
REV. B	11/4/14
REV. A	6/22/09
 GS MFG	6/20/00