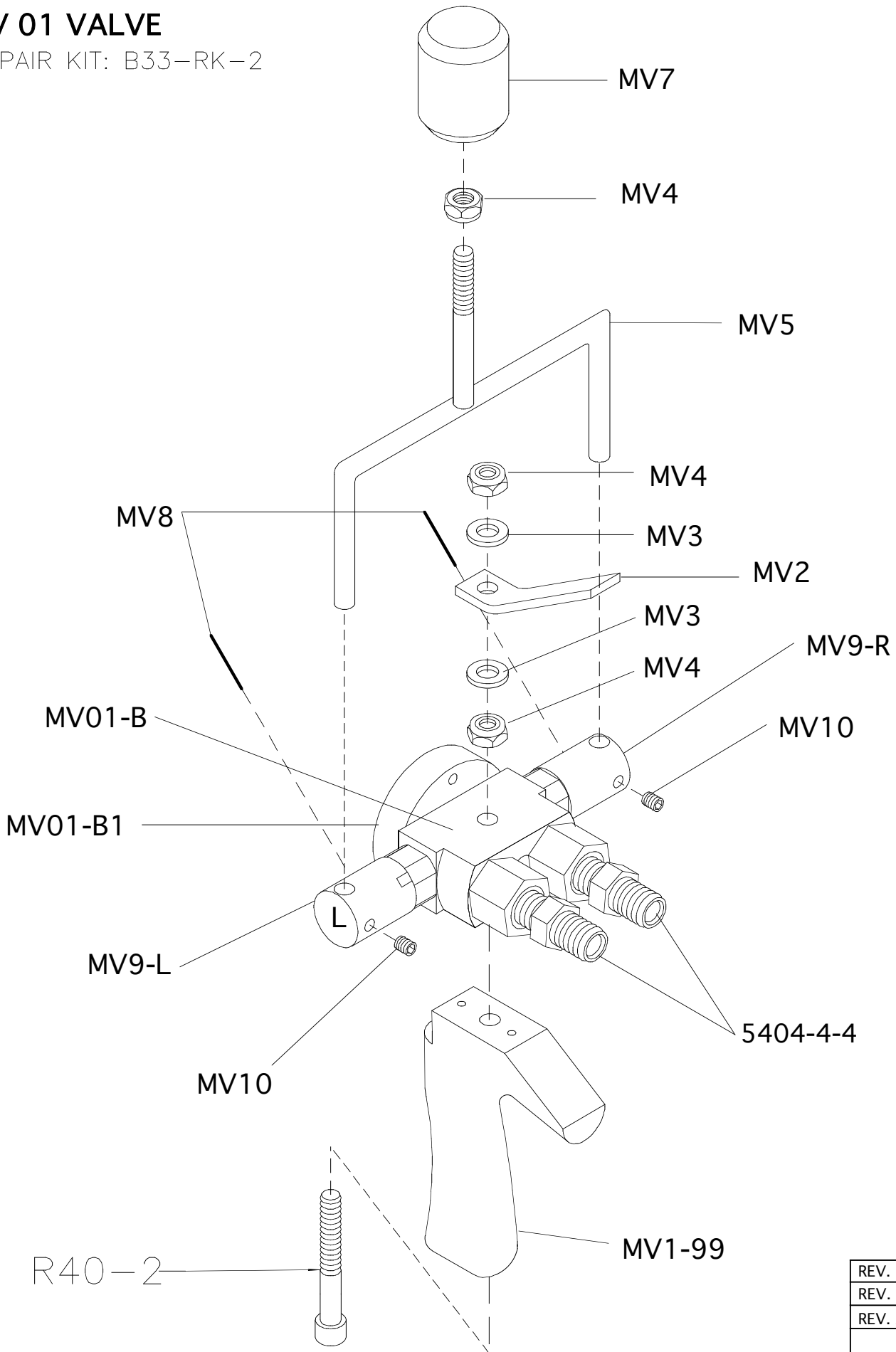


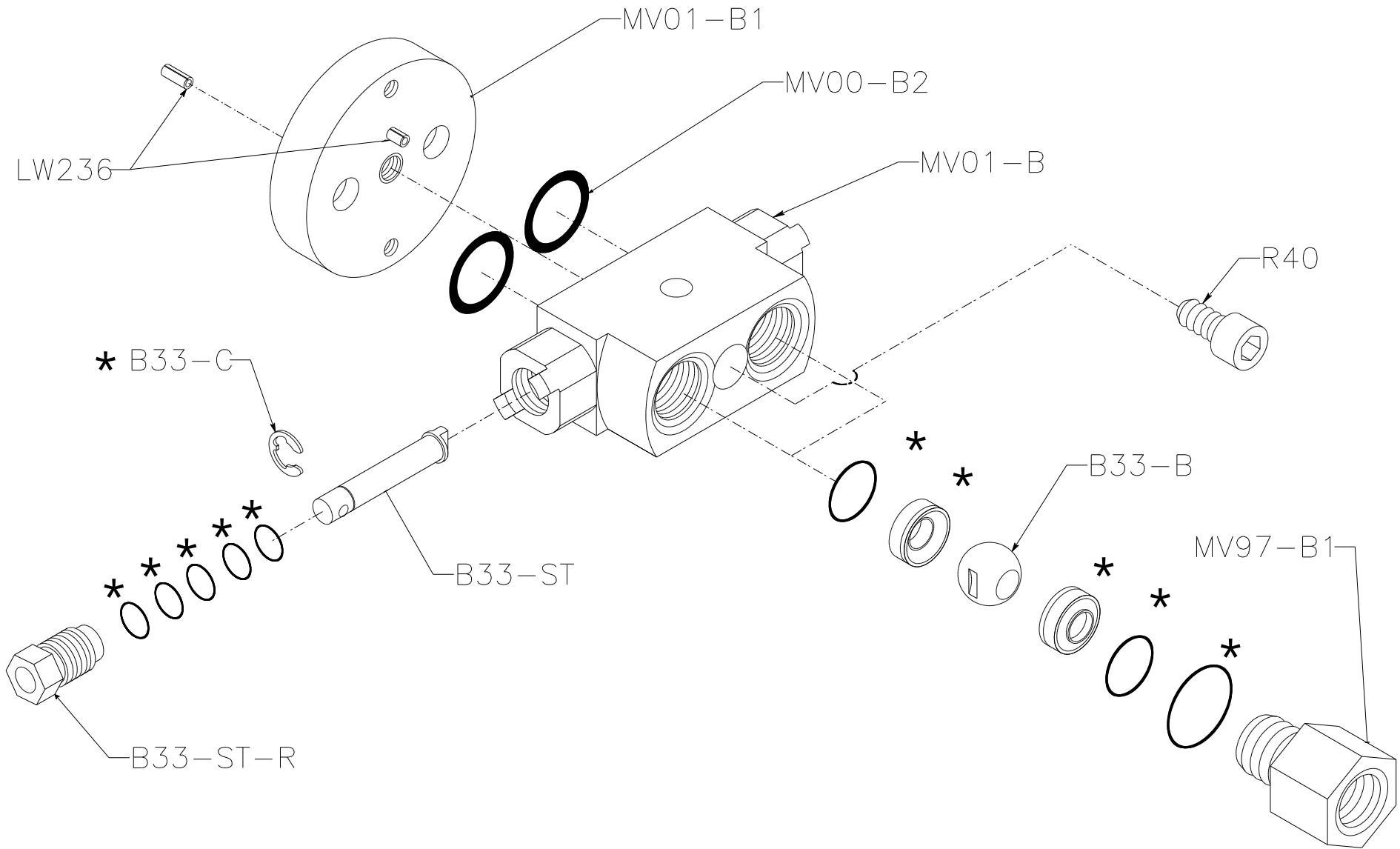
# MV 01 VALVE

REPAIR KIT: B33-RK-2



REV. C	12/29/08
REV. B	11/25/03
REV. A	10/15/01

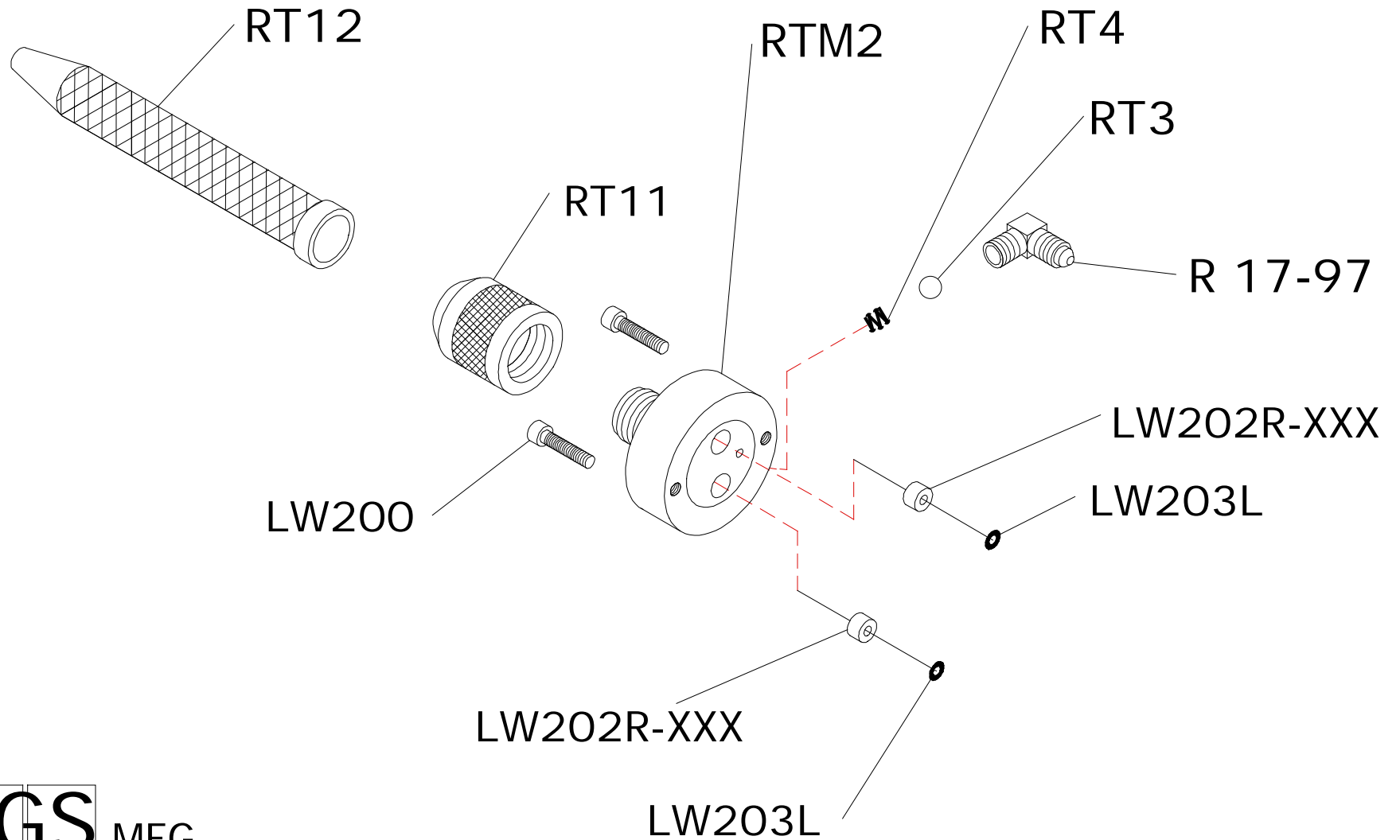
# MV01-BA BODY ASSEMBLY



\*: REPAIR KIT: B33-RK-2

REV. C	
REV. B	7/11/07
REV. A	11/25/03

# RTM2-A

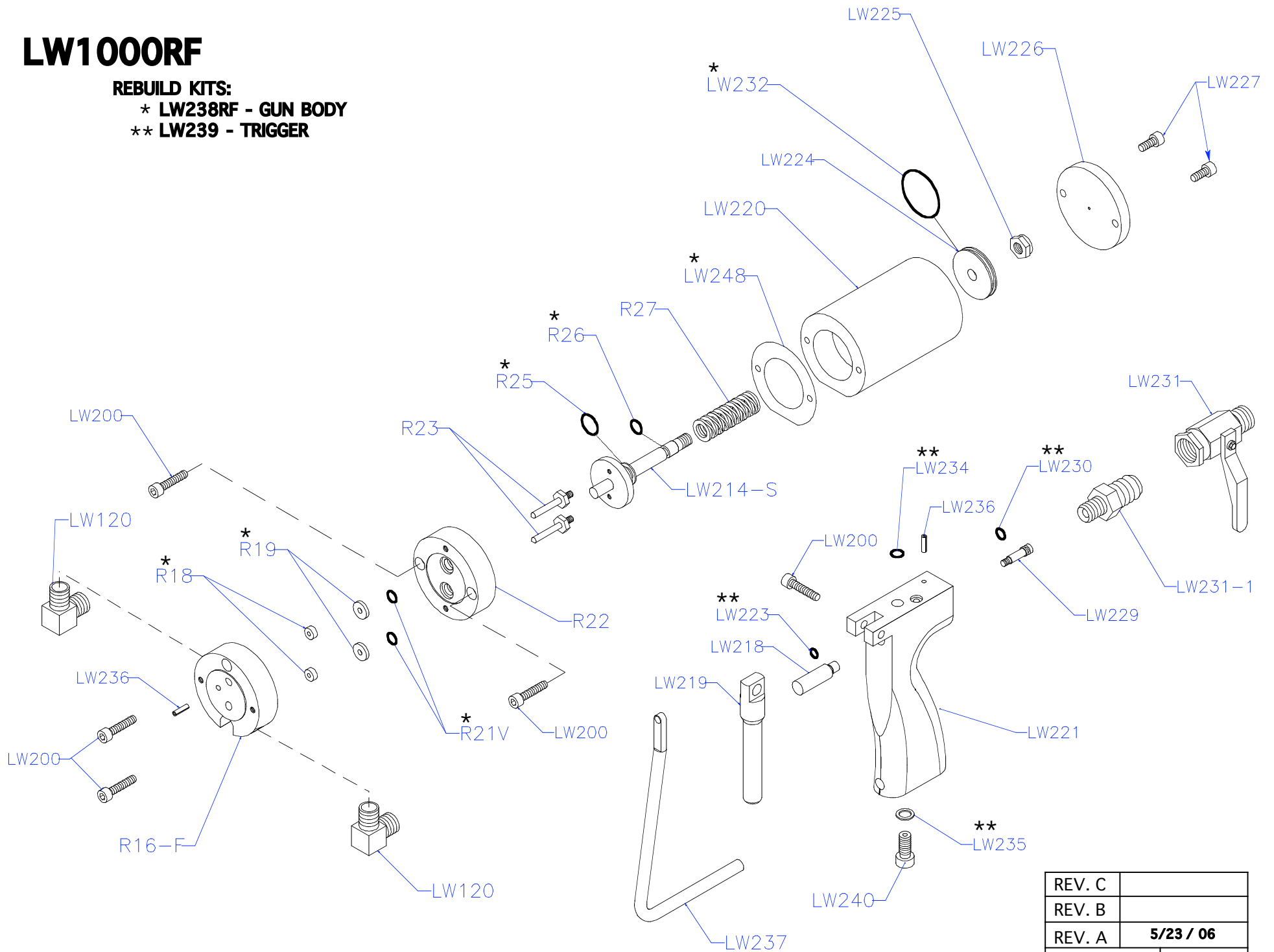



# LW1000RF

## REBUILD KITS:

\* LW238RF - GUN BODY

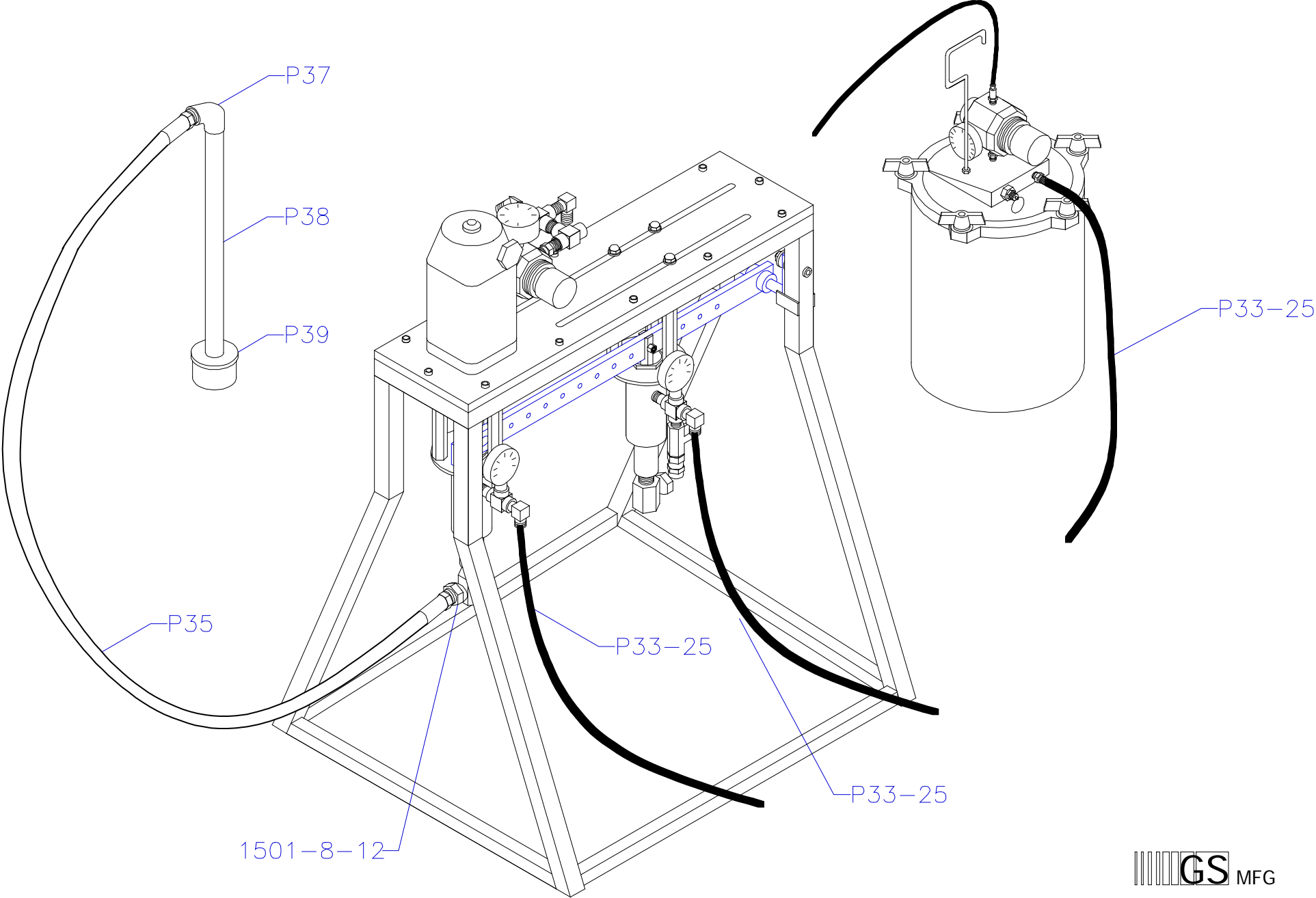
\*\* LW239 - TRIGGER



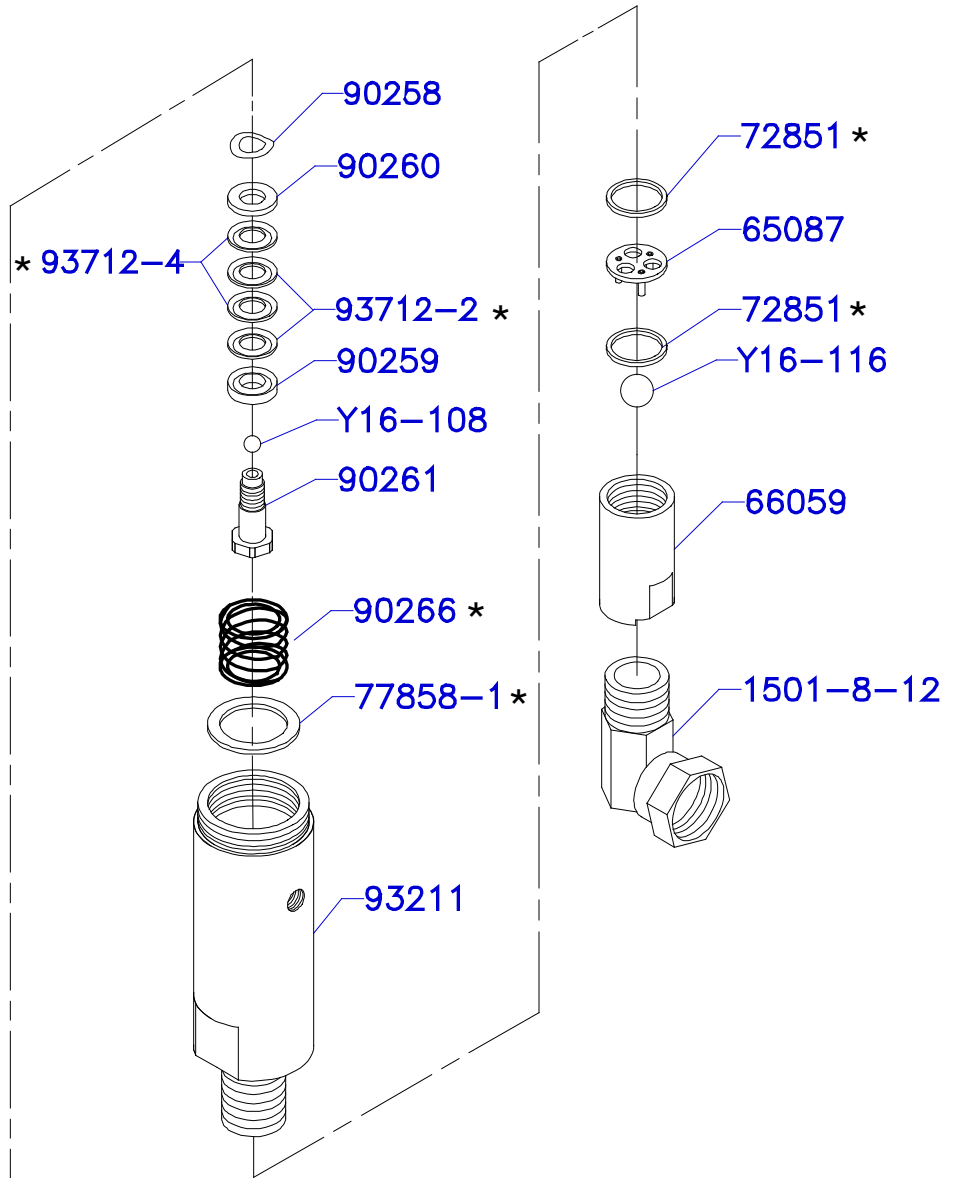
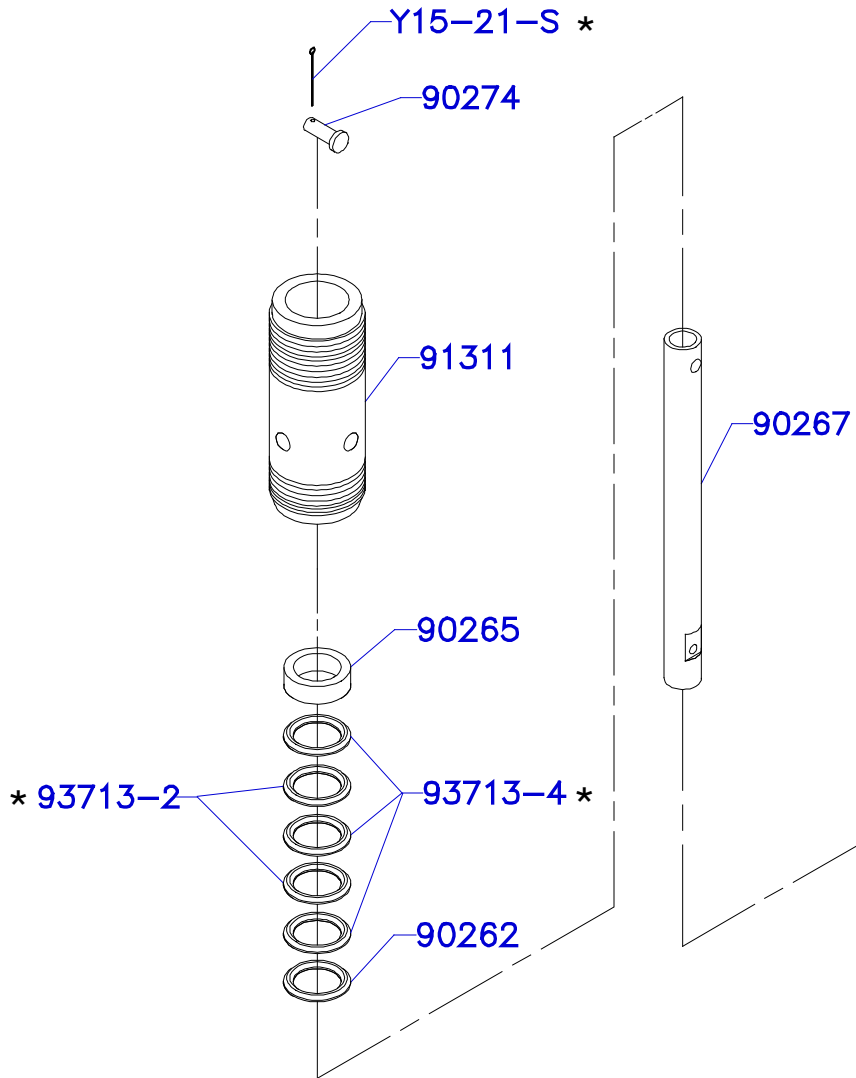
REV. C	
REV. B	
REV. A	5/23 / 06
 MFG	6/ 25/ 04



# LWVR-HOSES



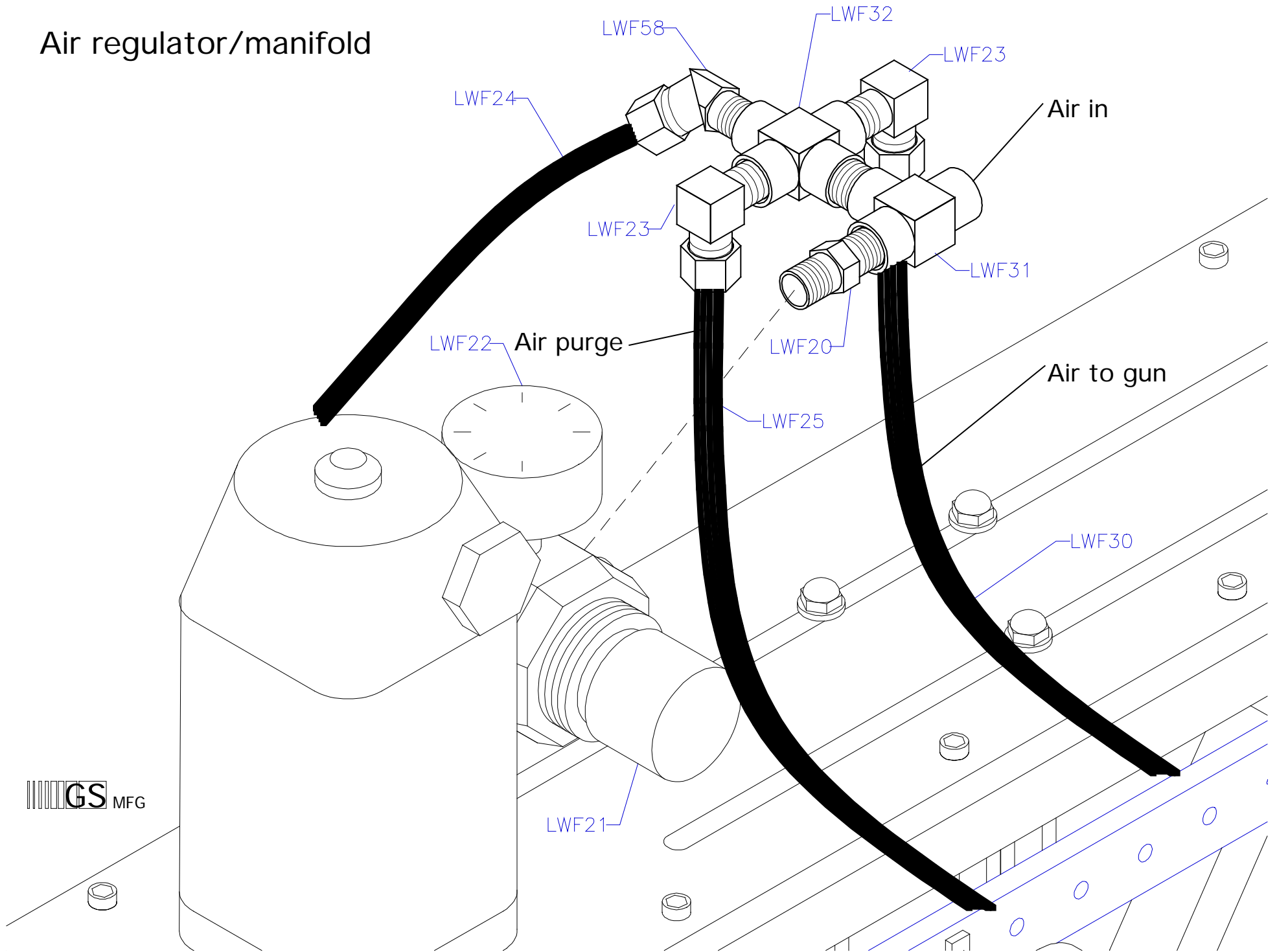
# 66066-97



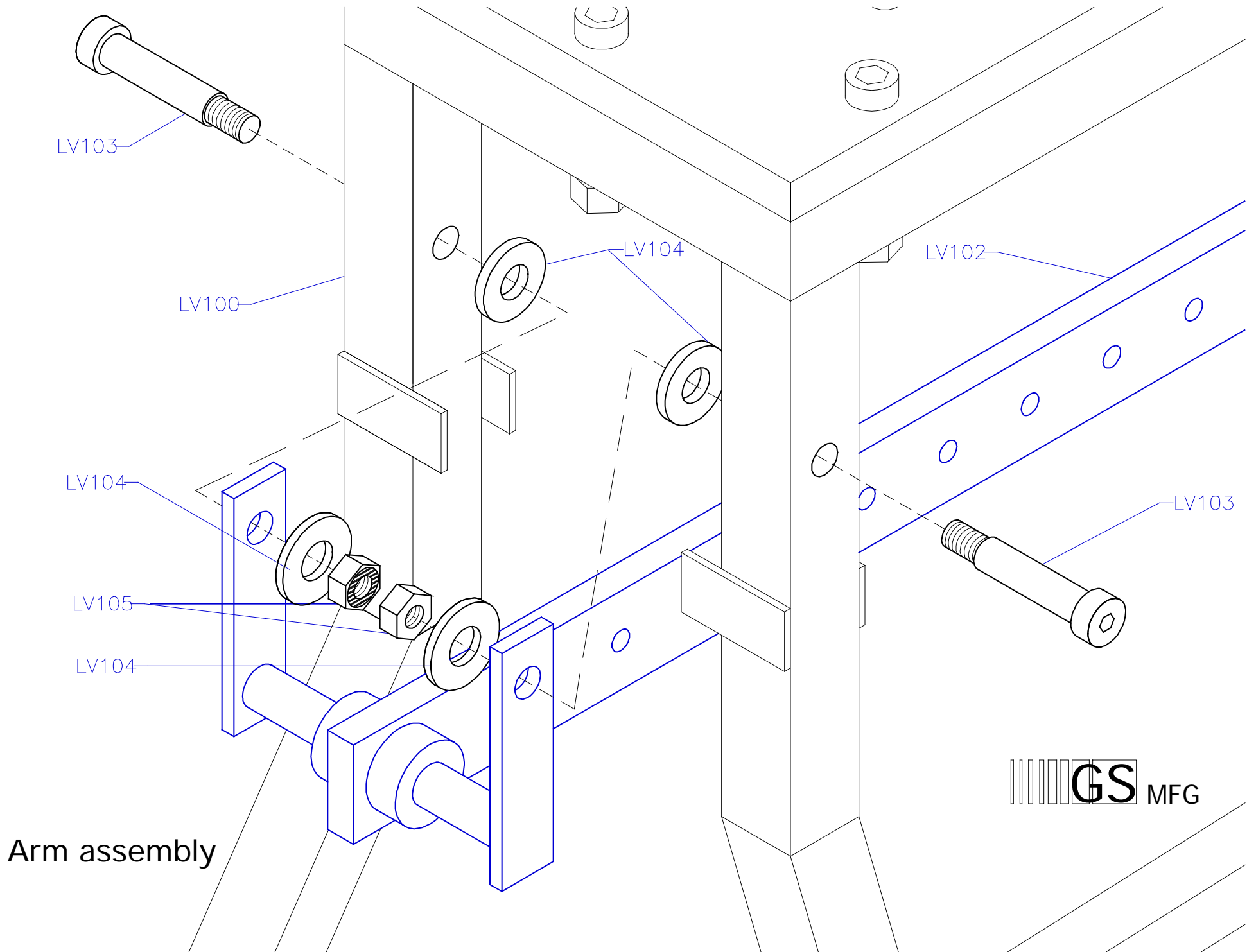
\* REBUILD KIT:  
637006-97



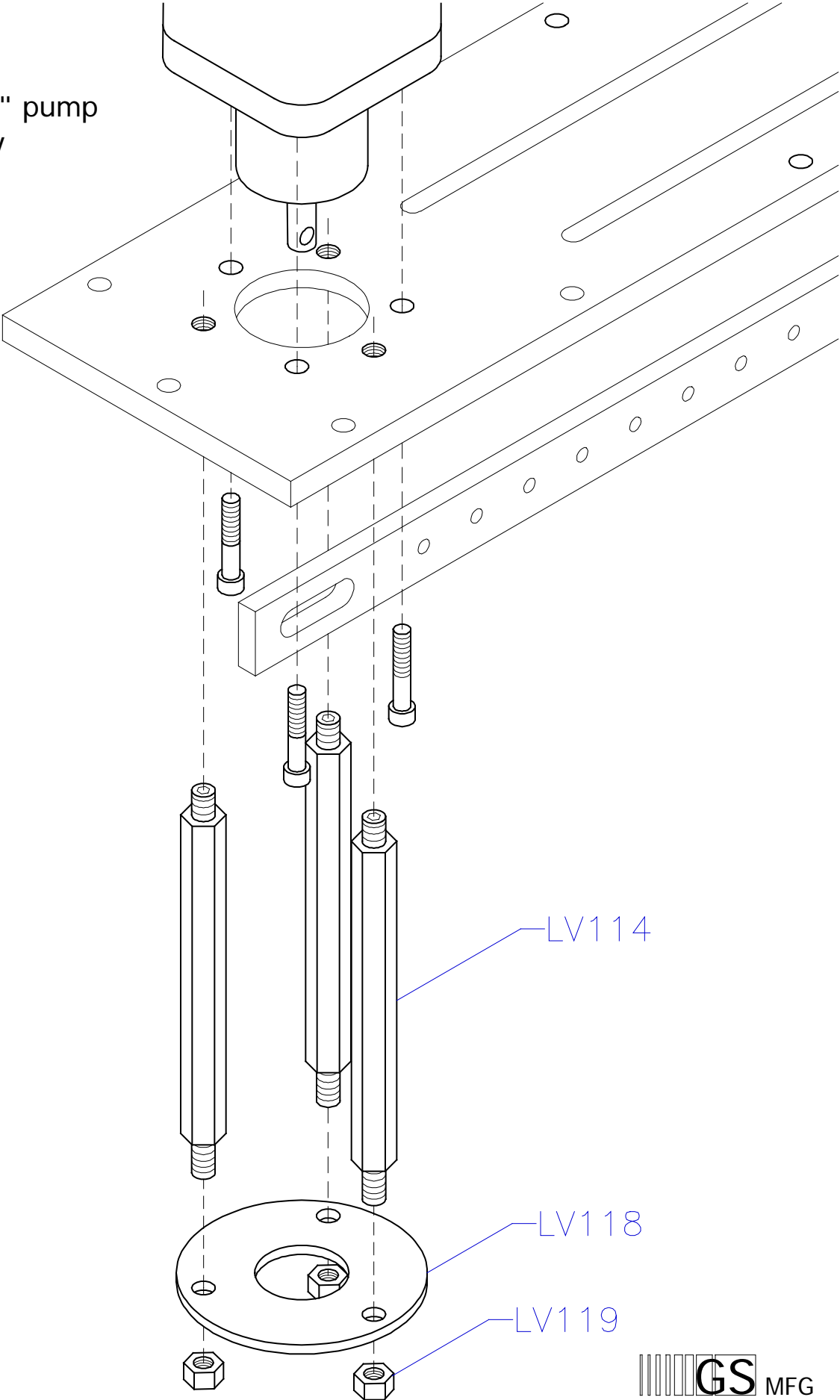
# Air regulator/manifold

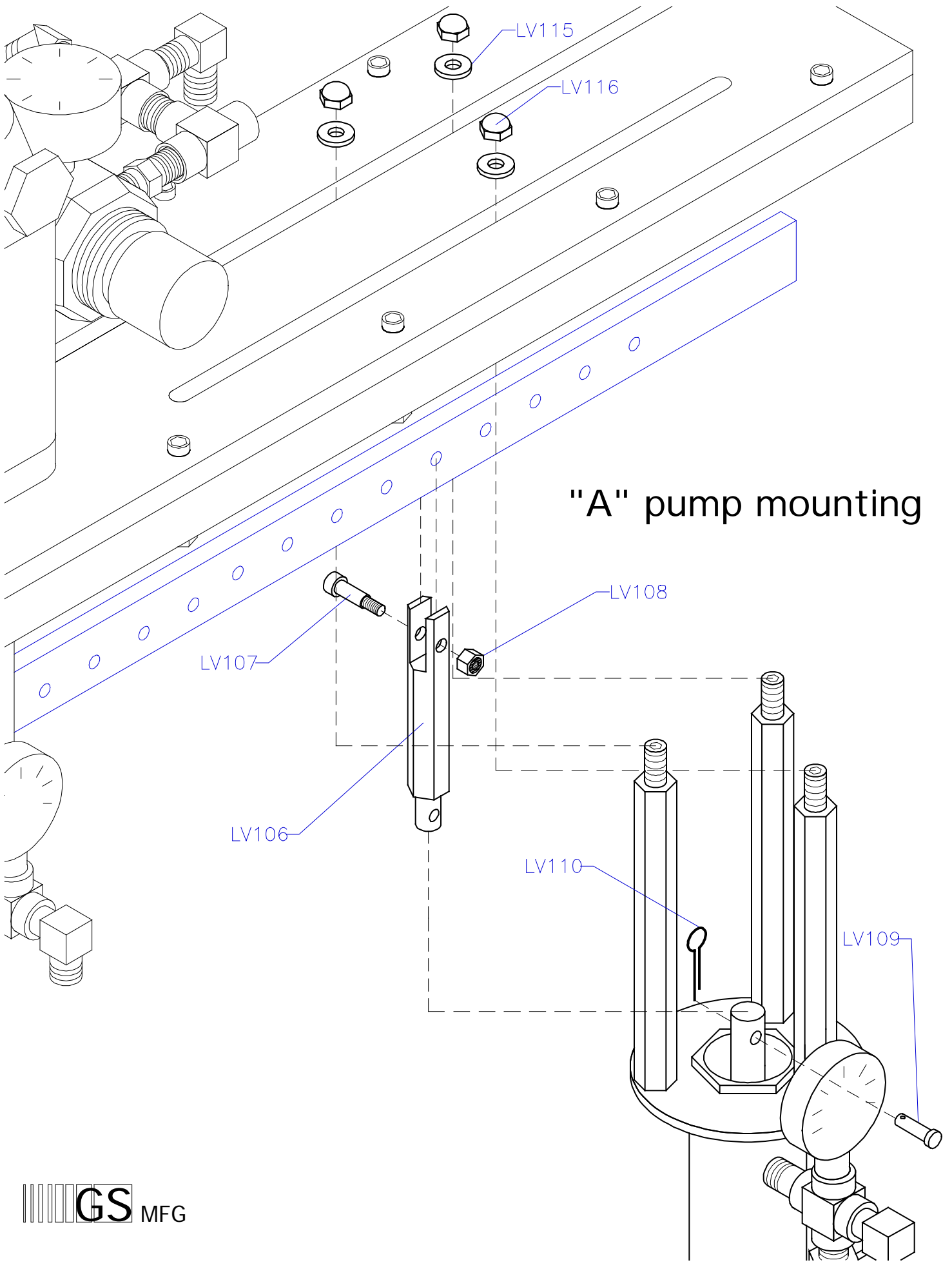






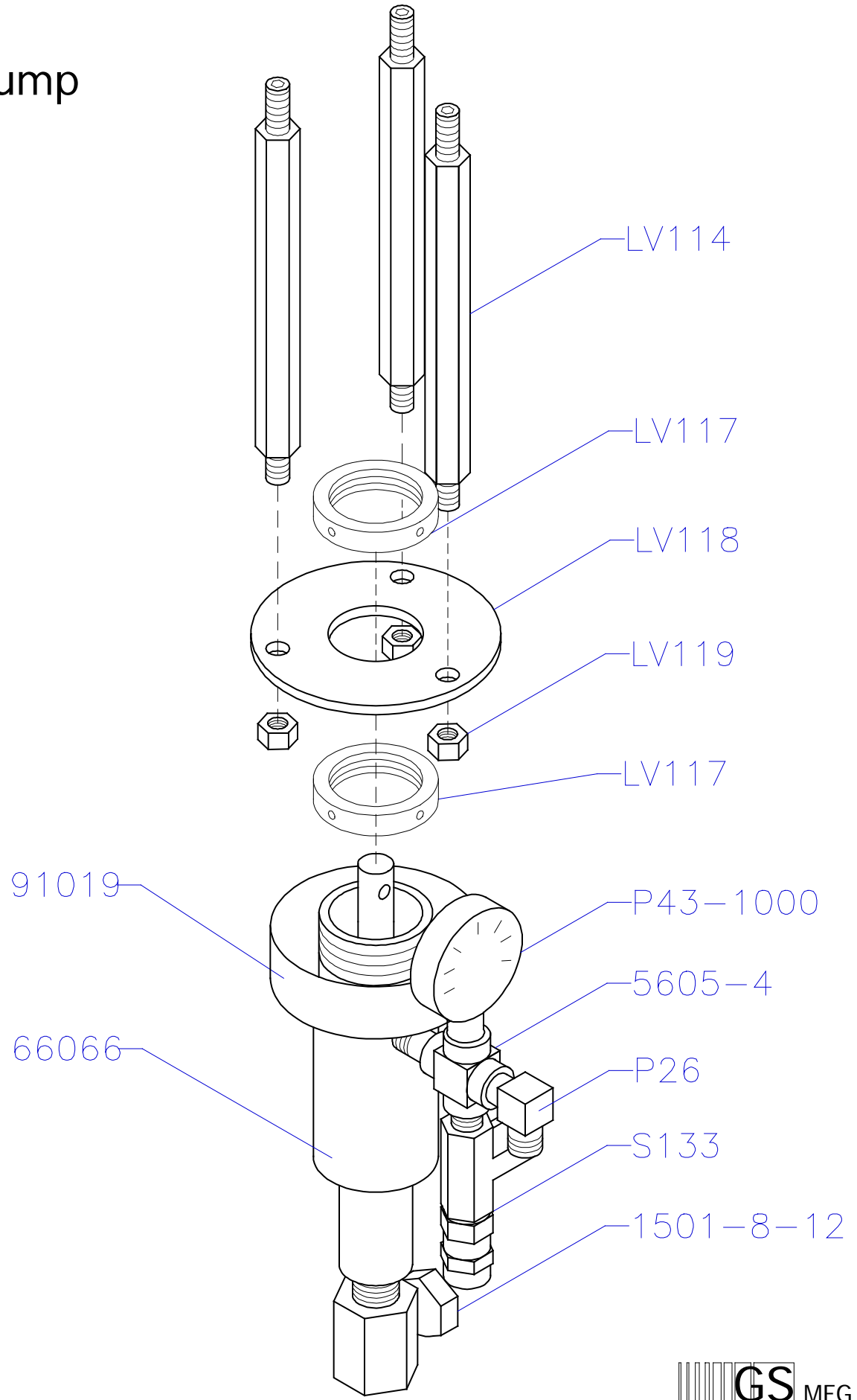
Air motor and "B" pump  
bracket assembly

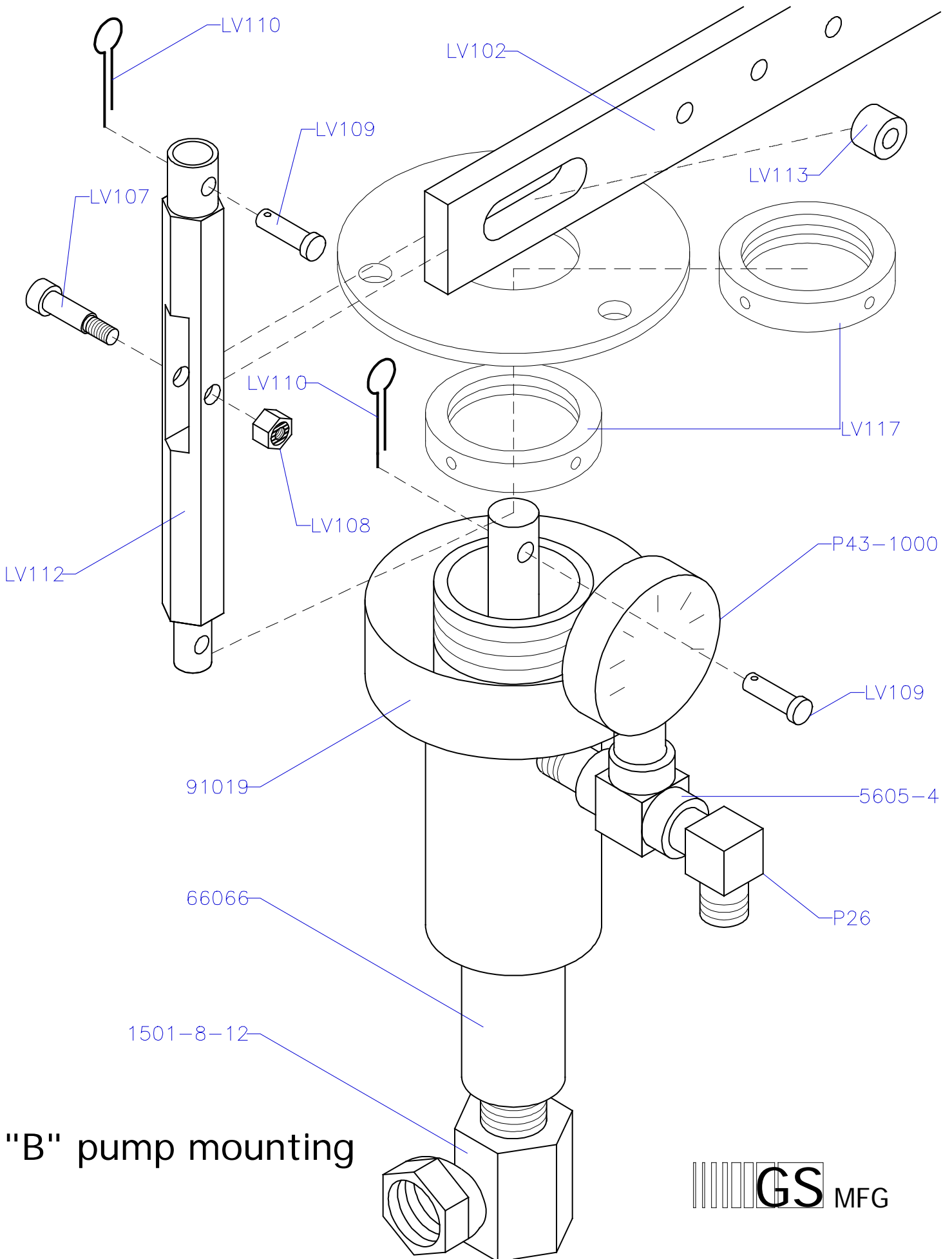




"A" pump mounting

# "A" pump

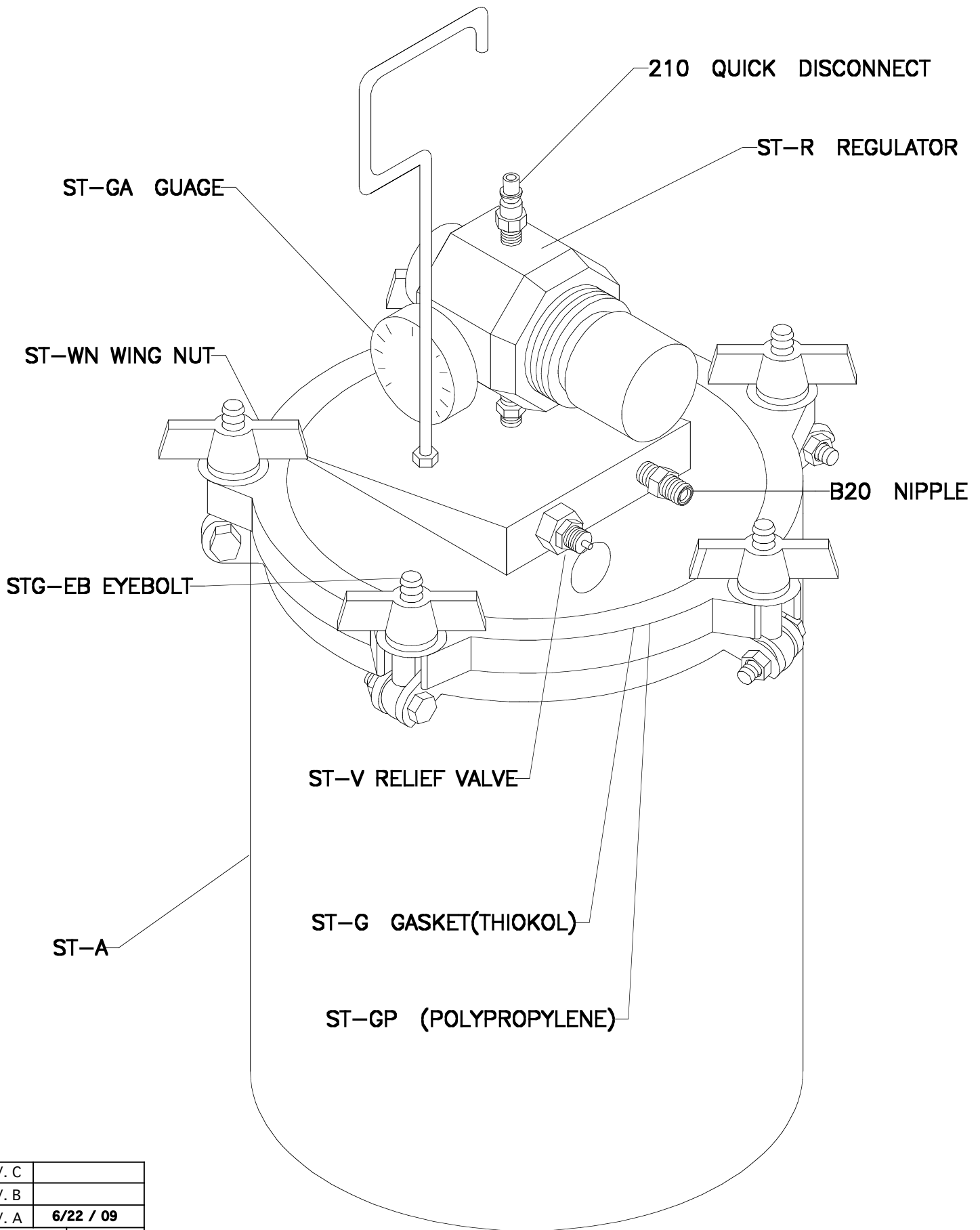





"B" pump mounting



# SOLVENT TANK



REV. C	
REV. B	
REV. A	6/22 / 09
 GS MFG	6/20/00